

8320 SOUTH MADISON

# Available for Lease

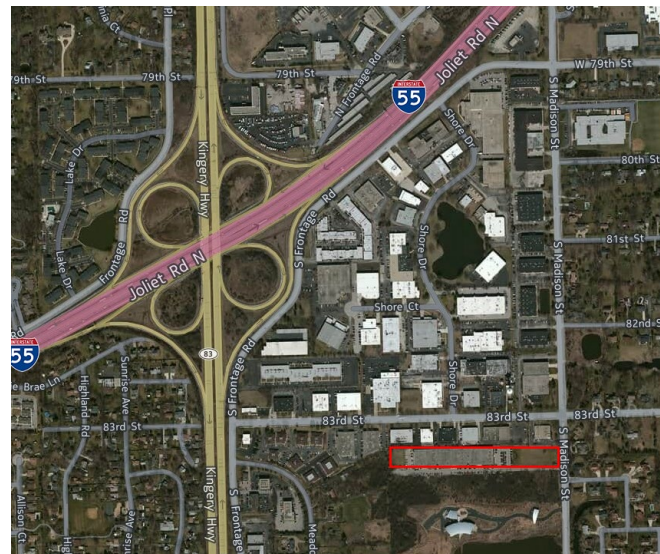
BURR RIDGE, ILLINOIS



## PROPERTY DETAILS

- 15,054 SF | 50% office | 50% warehouse/storage area
- Newly renovated office and warehouse ready for immediate occupancy
- 1 depressed dock and overhead door
- Staging area in truck dock
  
- 2,675 SF | 100% office
- Updated lighting (LEDs) throughout space
- 16' ceiling height
- Utilities separately metered
- Parking: 200 Spaces - 2.60/1,000 SF
- Signage available
- Located near the Rte 83 & I-55 full interchange

Rental Rate: \$13.50/SF Gross



**Tom Gnadt**

630 693 0659

tgnadt@hiffman.com

**Adam Johnson**

630 317 0728

ajohnson@hiffman.com

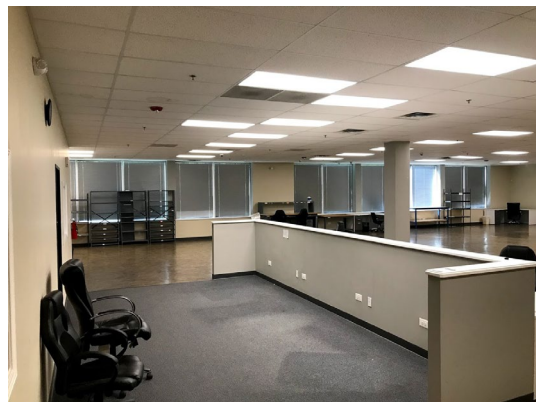
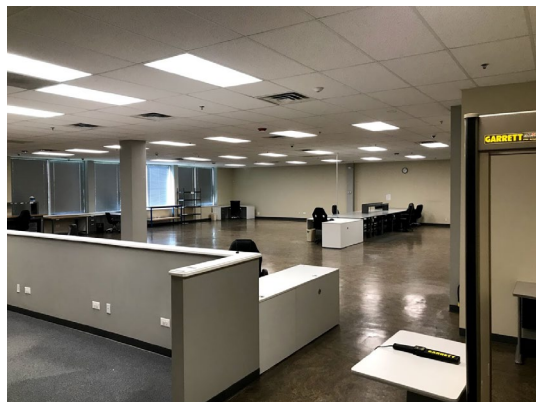
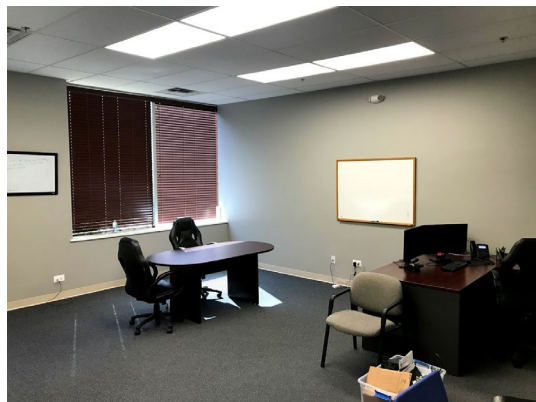
**John Whitehead**

630 693 0643

jwhitehead@hiffman.com

[PROPERTY WEBSITE](#)

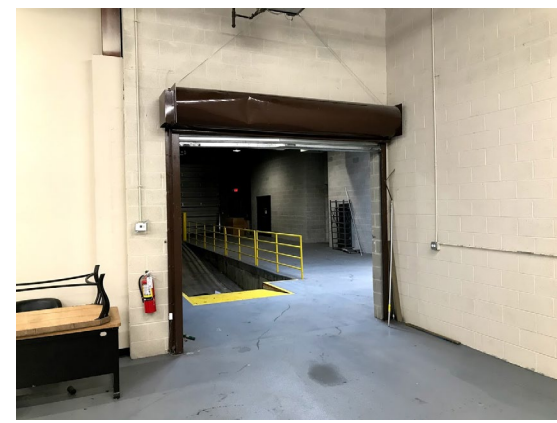
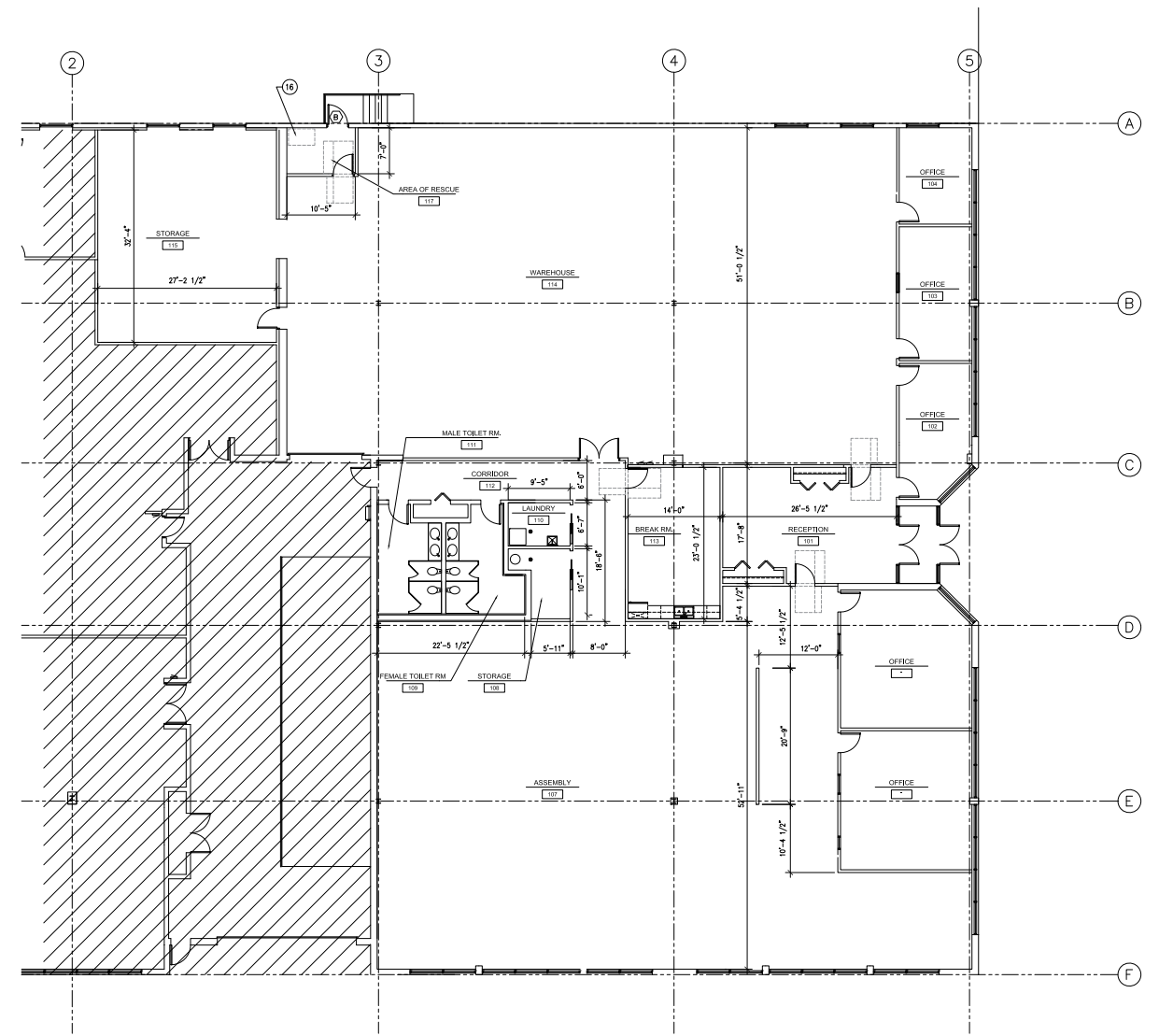
8320 SOUTH MADISON  
**Interior Office Photos**  
 BURR RIDGE, ILLINOIS



8320 SOUTH MADISON  
**Interior Warehouse Photos**  
 BURR RIDGE, ILLINOIS

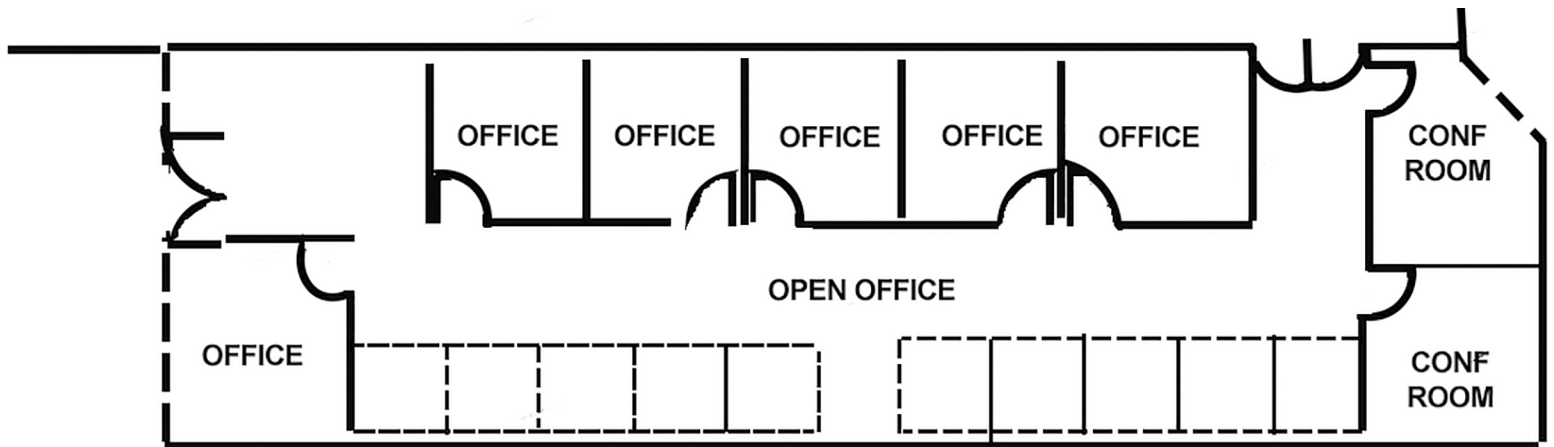
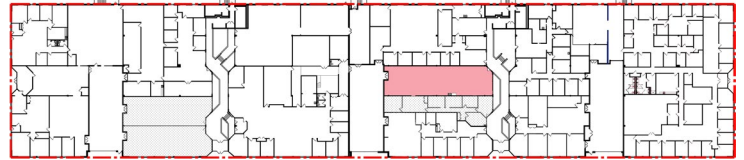


8320 S MADISON, BURR RIDGE  
**±15,054 SF Available**



8320 S MADISON, BURR RIDGE

±2,675 SF Available



**Tom Gnadt**

+1 630 693 0659  
tgnadt@hiffman.com

**Adam Johnson**

+1 630 317 0729  
ajohnson@hiffman.com

**John Whitehead**

+1 630 693 0643  
jwhitehead@hiffman.com