

550 - 600 COMMONS DRIVE

# Meridian Tech Center

AURORA | ILLINOIS

## Under New Motivated Ownership



### Office / Flex Space for Lease 3,700 to 11,616 SF

#### Recently Completed Renovations & Property Refresh

- Buildings are single-story reinforced concrete construction
- Located just north of Route 34 (Ogden Avenue) and west of Route 59 within the distinguished Meridian Business Campus
- Surrounding business park consists of light office, flex buildings, light industrial facilities
- Plentiful nearby amenities including the Fox Valley Mall, big box retail and smaller boutique shops, hotels and restaurants
- METRA station 7 minutes north of the property
- Commuter friendly with abundant PACE Bus stops located strategically throughout the campus

For more information

**Adam Johnson**

630 317 0729

[ajohnson@hiffman.com](mailto:ajohnson@hiffman.com)

**Ryan Maher**

630 693 0677

[rmaher@hiffman.com](mailto:rmaher@hiffman.com)

**NAI Hiffman**

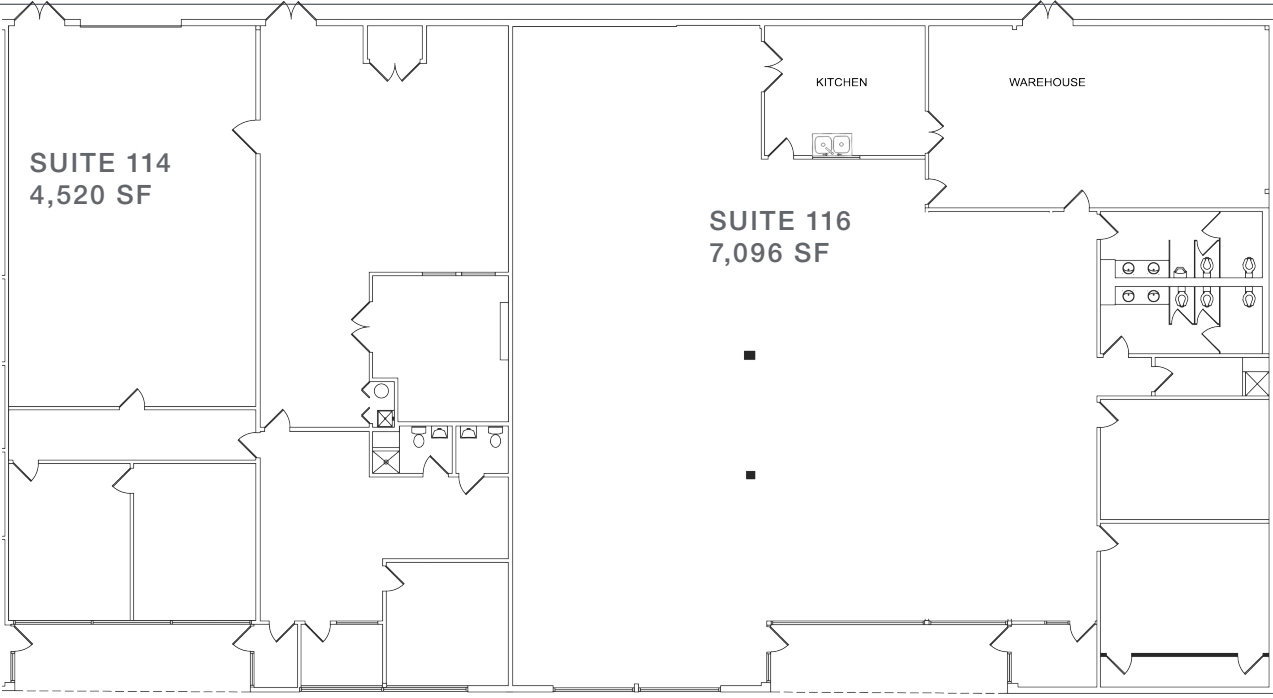
ONE OAKBROOK TERRACE SUITE 400  
OAKBROOK TERRACE IL 60181  
630 932 1234  
[WWW.NAIHIFFMAN.COM](http://WWW.NAIHIFFMAN.COM)

©2019 NAI Hiffman All rights reserved. All information contained herein is from sources deemed reliable; however, no representation or warranty is made to the accuracy thereof.



**3,700 to 11,616 SF Available**

**AURORA | ILLINOIS**



**Suite 114/116 - 11,616 SF**



- Abundant parking
- Individual suite entry with 24-hour accessibility
- Well maintained and landscaped grounds
- Route 59 METRA station just north of the buildings with abundant Pace stops throughout the campus
- Immediate access to Route 59

## 600 N Commons Drive

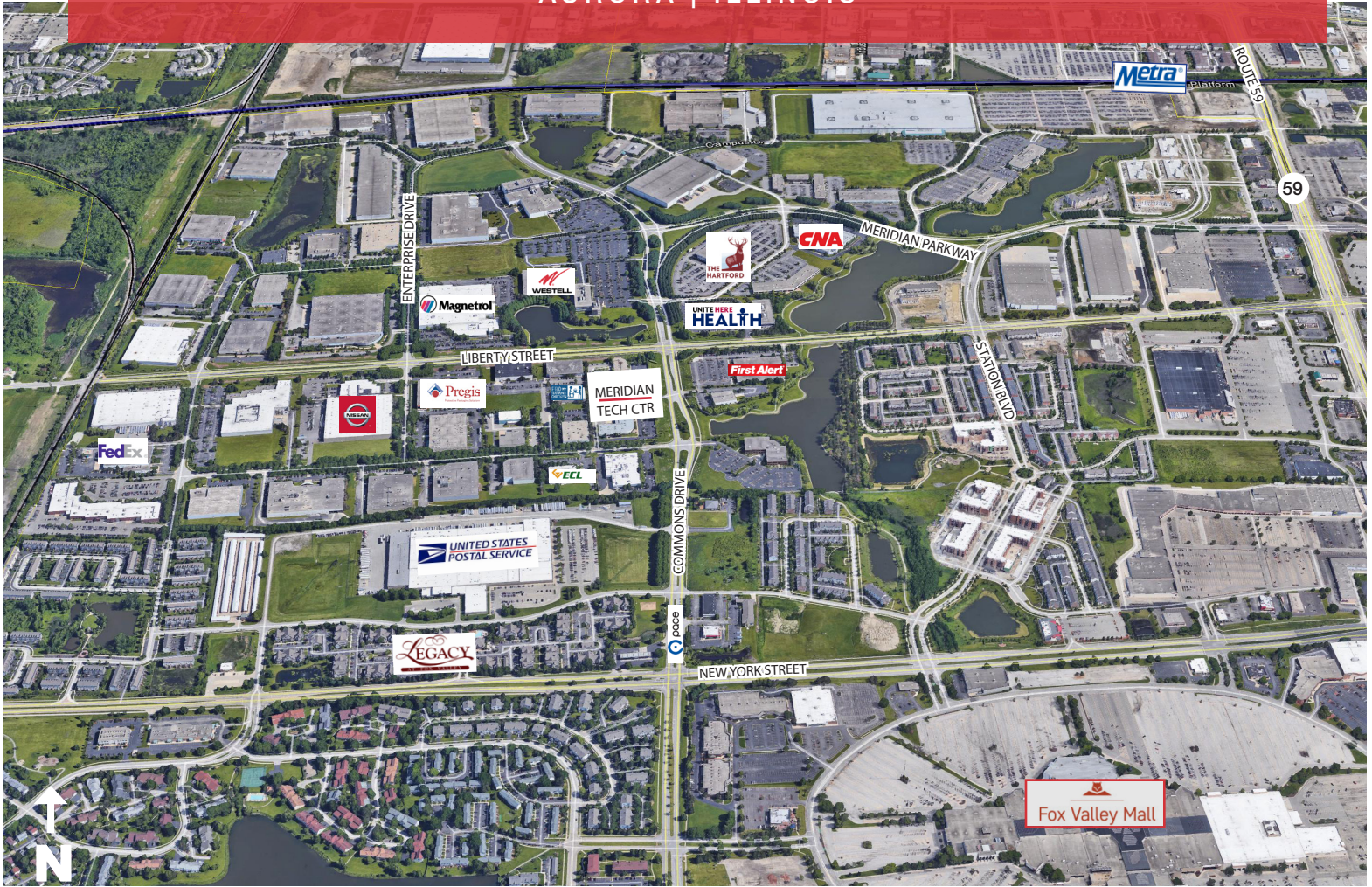
- Suite 109 - 3,700 SF (Available 5/1/20)
- Suite 114 - 4,520 SF
- Suite 116 - 7,096 SF

*Suites 114 | 116 can be combined for 11,616 SF*

550 - 600 COMMONS DRIVE

# Meridian Tech Center

AURORA | ILLINOIS



These highly visible properties are located on Commons Drive in the well-established Meridian Tech Center Business Campus in Aurora, Illinois. The properties are central to METRA and PACE transportation, business services and abundant retail and dining amenities.

Notable tenants in close proximity include the Beacon News, the U.S. Postal Service, Nissan America, Robert Morris University and Hartford Insurance.

For more information

**Ryan Maher**

630 693 0677

[rmaher@hiffman.com](mailto:rmaher@hiffman.com)

**Adam Johnson**

630 317 0729

[ajohnson@hiffman.com](mailto:ajohnson@hiffman.com)

