

FORMER SHOPKO

125 MAIN STREET NORTH

HUTCHINSON, MN 55350

FOR LEASE OR FOR SALE



BCRE

bloom commercial real estate

80 South Eighth Street
Suite 1850 – IDS Center
Minneapolis, MN 55402
www.bloomcommercial.com

EST. DEMOGRAPHICS	5 MIN DRIVE	12 MIN DRIVE	15 MIN DRIVE
-------------------	-------------	--------------	--------------

Employees	10,973	14,488	33,248
-----------	--------	--------	--------

Population	11,839	19,319	66,793
------------	--------	--------	--------

TRAFFIC COUNTS

County Rd 22 or 4th Ave NE	12,100 VPD
----------------------------	------------

Couty Rd 15 or Main St N	12,800 VPD
--------------------------	------------

Adams St NE	9,300 VPD
-------------	-----------

SQUARE FOOTAGE:

71,806 sf

FEATURES:

- Freestanding building
- Pylon Sign
- Great Access
- 280 Parking Stalls
- 5.4 Acres

FOR MORE INFORMATION PLEASE CONTACT:

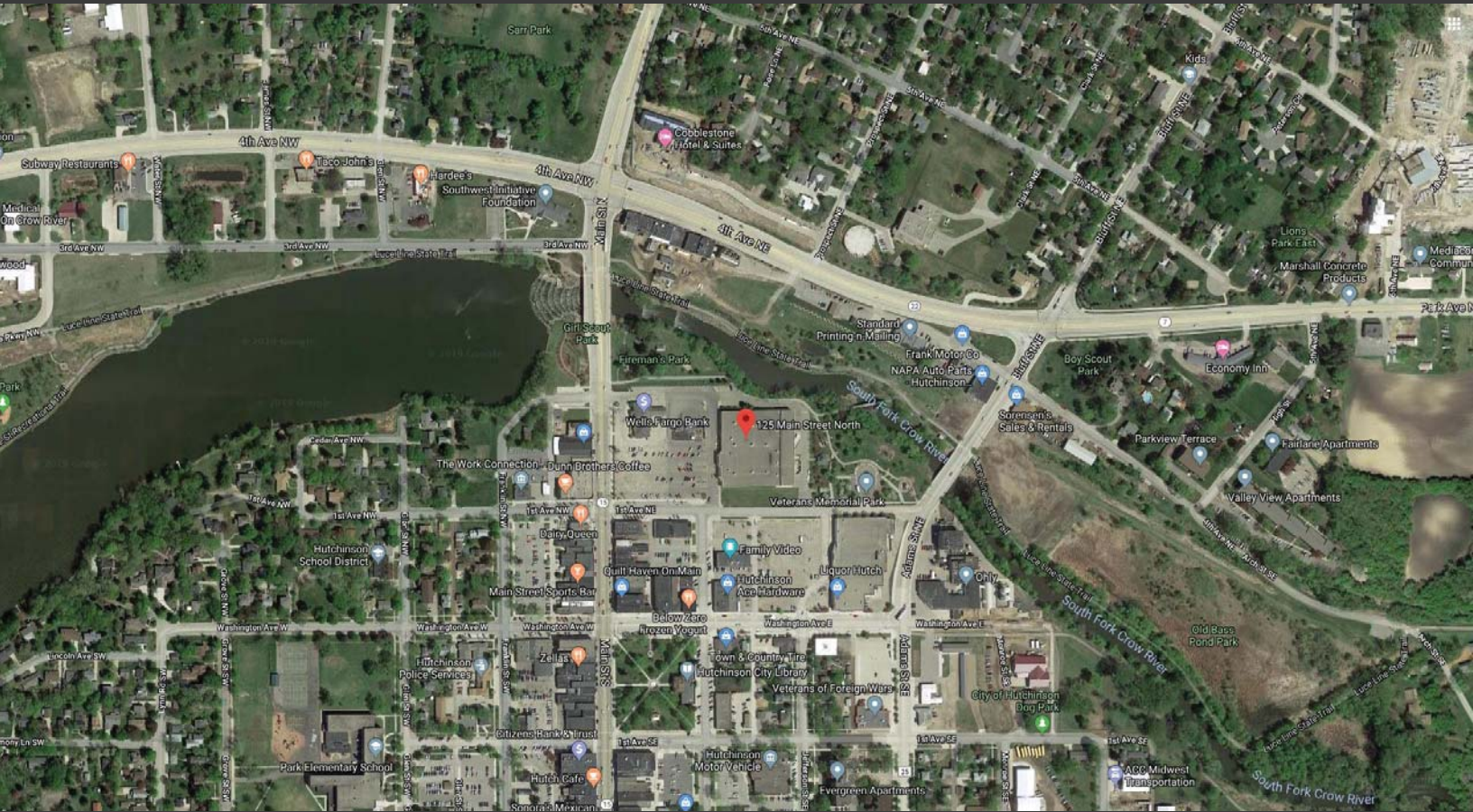
Josh Bloom
Principal
651-207-3157 text or call
josh@bloomcommercial.com

Tim Bloom
Principal
612-701-5151 text or call
tim@bloomcommercial.com

FORMER SHOPKO

125 MAIN STREET NORTH
HUTCHINSON, MN 55350

FOR LEASE OR FOR SALE



SQUARE FOOTAGE:

71,806 sf

FEATURES:

- Freestanding building
- Pylon Sign
- Great Access
- 280 Parking Stalls
- 5.4 Acres



BCRE

bloom commercial real estate

80 South Eighth Street
Suite 1850 – IDS Center
Minneapolis, MN 55402
www.bloomcommercial.com

