

2000 GLENWOOD AVENUE

For Sale or For Lease

JOLIET, ILLINOIS



PROPERTY DETAILS

- 29,315 SF Medical Office Building For Sale on 3.13 Acres
- Office or Medical Office Space For Lease
 - Suite 101 - 1,516 SF (SPEC SUITE)
 - Suite 102 - 3,598 SF
 - Suites 103/104 - 5,258 SF
 - Suite 105 - 845 SF
 - Suites 101-105 - 11,217 SF
 - Lower Level - 6,560 SF
- Ample Parking - 166 surface spaces for a ratio of 3.96/1,000
- Monument signage available
- Located 2 blocks east of Presence St Joseph Medical Center and adjacent to Joliet West High School

Asking Price: STO

Asking Rent: \$18.00/sf gross

Taxes: \$2.67 | Ops: \$3.95

Owned & Managed by:



Tom Gnadt

630 693 0659

tgnadt@hiffman.com

Adam Johnson

630 317 0728

ajohnson@hiffman.com

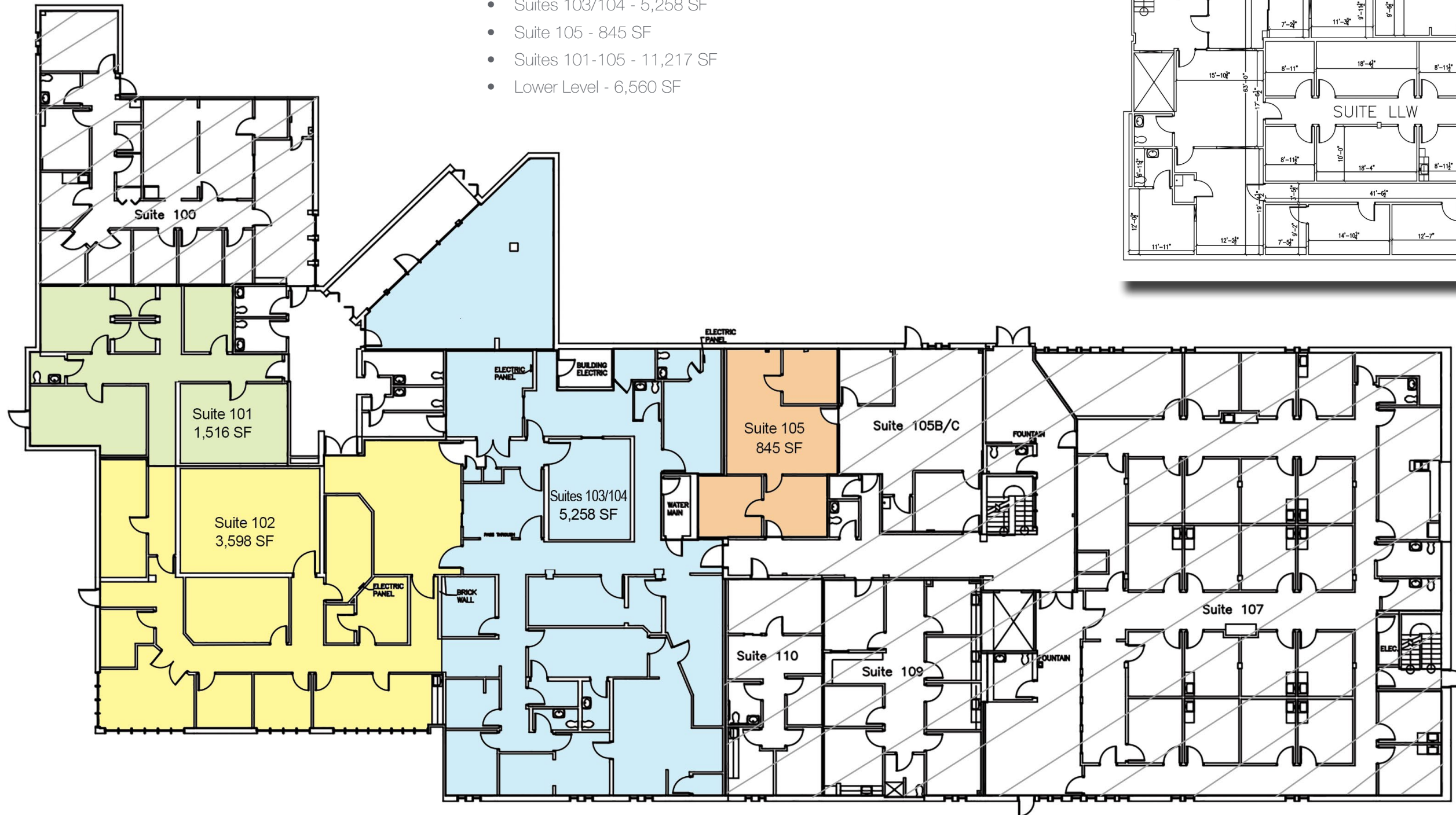
[PROPERTY WEBSITE](#)

2000 GLENWOOD AVENUE

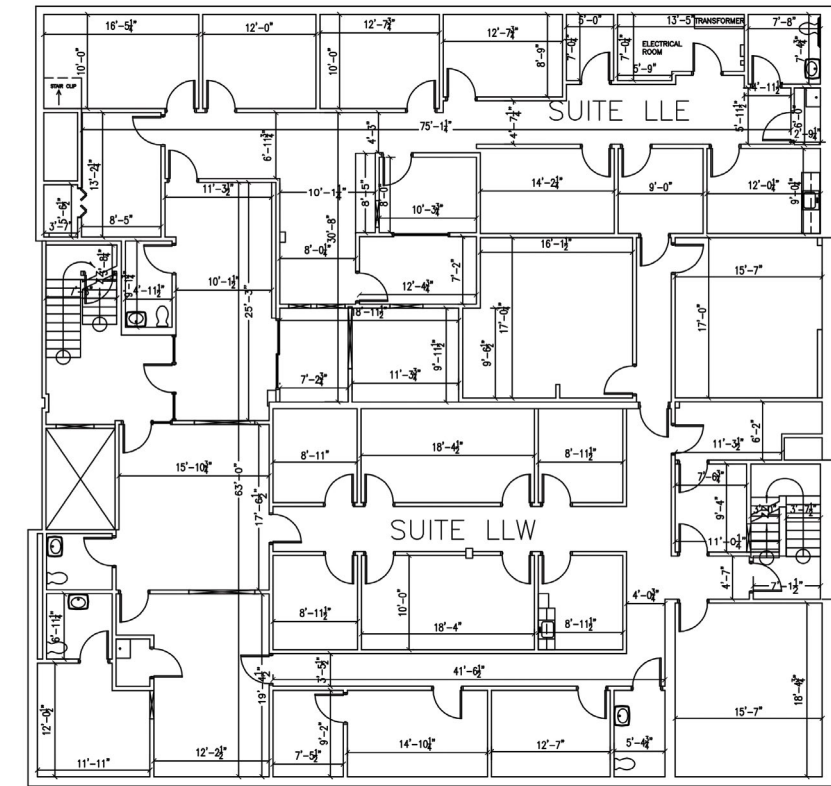
For Sale or For Lease

JOLIET, ILLINOIS

- Suite 101 - 1,516 SF (SPEC SUITE)
- Suite 102 - 3,598 SF
- Suites 103/104 - 5,258 SF
- Suite 105 - 845 SF
- Suites 101-105 - 11,217 SF
- Lower Level - 6,560 SF



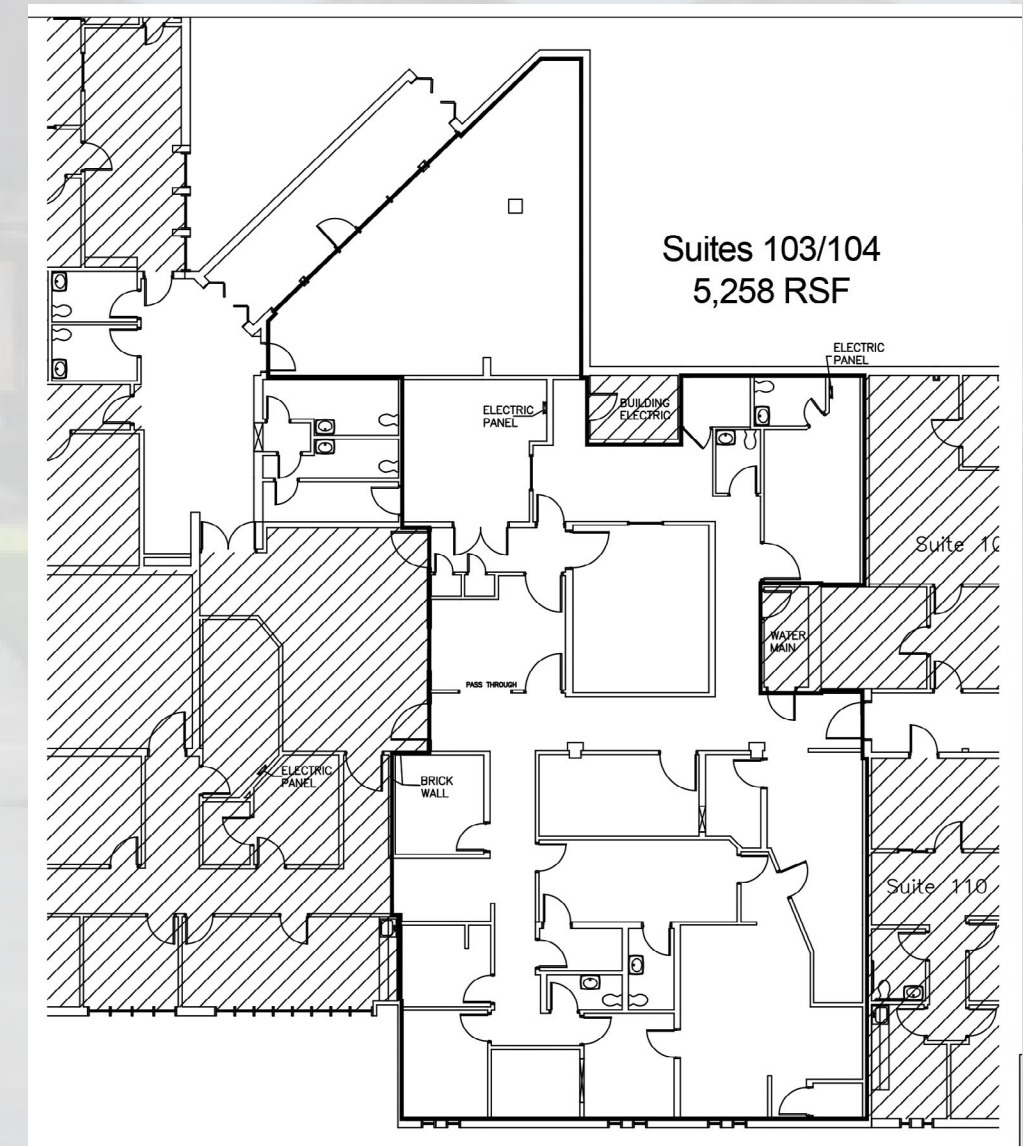
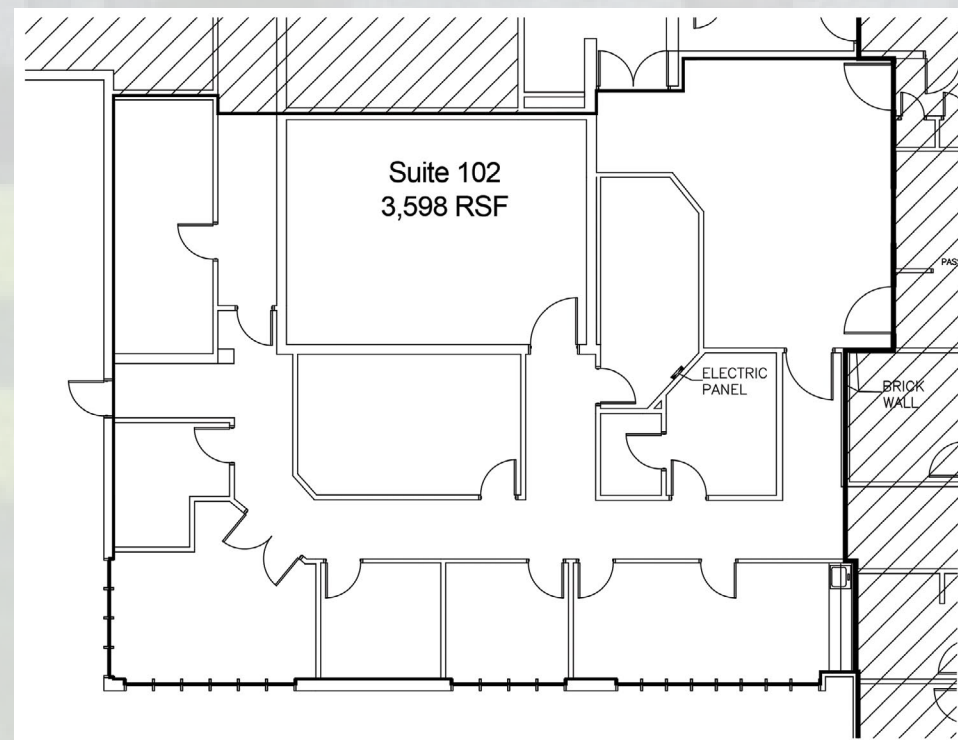
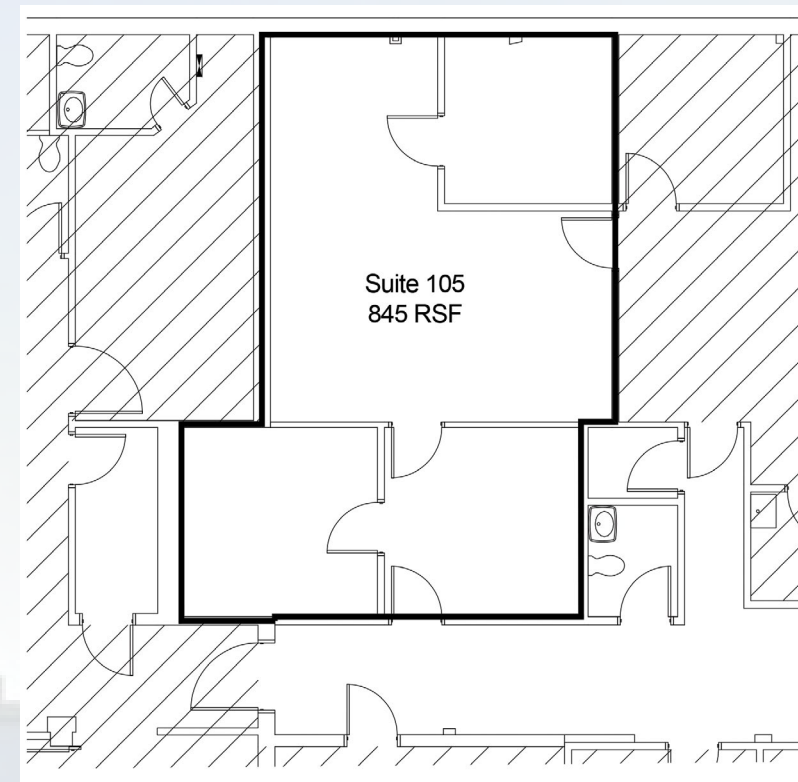
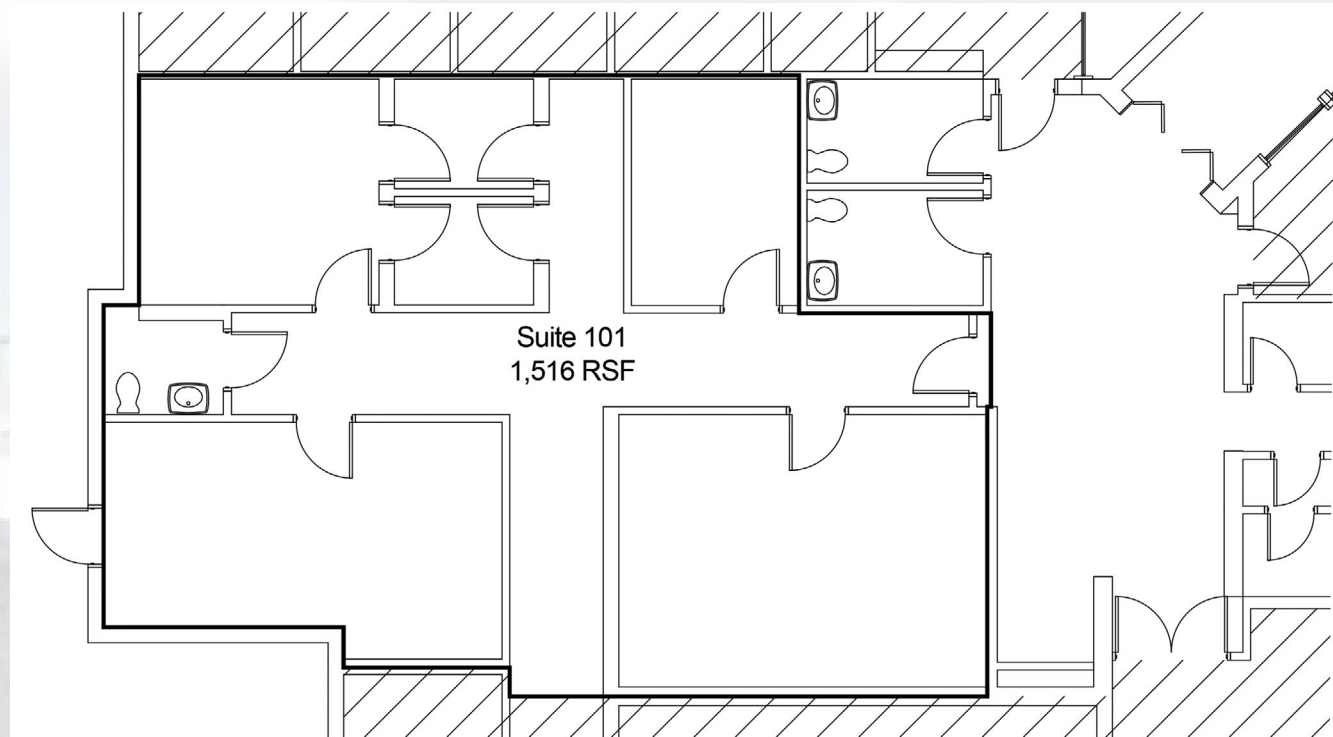
Lower Level



2000 GLENWOOD AVENUE

Floor Plans

JOLIET, ILLINOIS



2000 GLENWOOD AVENUE

For Sale or For Lease

JOLIET, ILLINOIS



Owned & Managed by:



RE Development
Solutions

Tom Gnadt

630 693 0659
tgnadt@hiffman.com

Adam Johnson

630 317 0728
ajohnson@hiffman.com

NAIHiffman

ONE OAKBROOK TERRACE SUITE 400
OAKBROOK TERRACE IL 60181
630 932 1234

HIFFMAN.COM
@NAIHIFFMAN

©2021 NAI Hiffman. All rights reserved. All information contained herein is from sources deemed reliable; however, no representation or warranty is made to the accuracy thereof.