

NAPERVILLE | ILLINOIS

215 W Diehl Rd



CORPORATE HEADQUARTERS BUILDING SIGNAGE OPPORTUNITY

161,820 SF Class A Office Space

Located on a main thoroughfare in Naperville, 215 W Diehl Road is central to the best amenities the city has to offer. The property is located in a thriving business park immediately south of I-88 with proximity to Shuman Boulevard, Park Street and Washington Street.

- **34,155 to 161,820 square feet of Class A office space available for lease**
- **Excellent corporate headquarters opportunity**
- **Ownership is planning extensive renovations and upgrades with some already completed**
- **Exceptional on-site amenities and services, including food service, fitness center, and conference facilities**
- **High profile building signage opportunity**
- **Efficient floor plates**
- Accessible location immediately south of I-88
- 6 minutes from downtown Naperville & the Naperville Metra Station
- Serviced by Pace Bus service
- Nearby amenities include an abundance of restaurants, daycare, Lifetime Fitness, a multiplex movie theatre and entertainment complex, hotels and an array of shopping options
- The Naperville demographic provides a local skilled, educated workforce for prospective office tenants

Patrick Kiefer
630 693 0670
pkiefer@hiffman.com

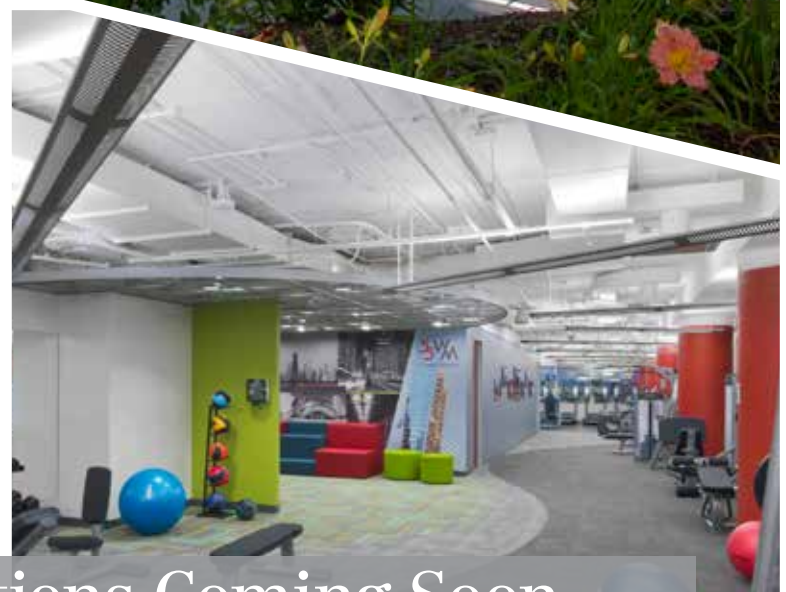
FOR MORE INFORMATION

NAI Hiffman

ONE OAKBROOK TERRACE STE 400 | OAKBROOK TERRACE IL 60181
WWW.NAIHIFFMAN.COM

Jim Adler
630 691 0605
jadler@hiffman.com

Building Signage Opportunity



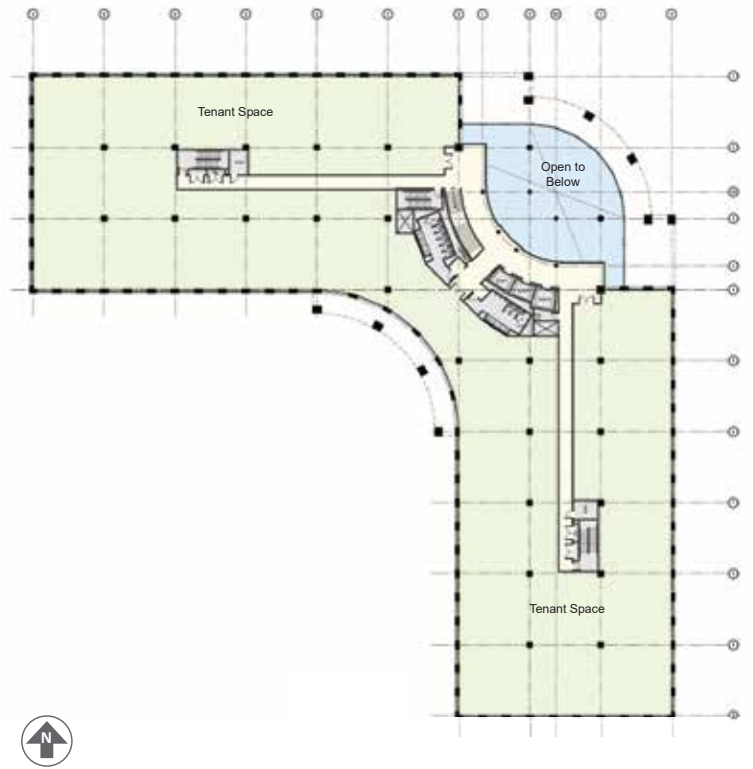
Exciting Renovations Coming Soon



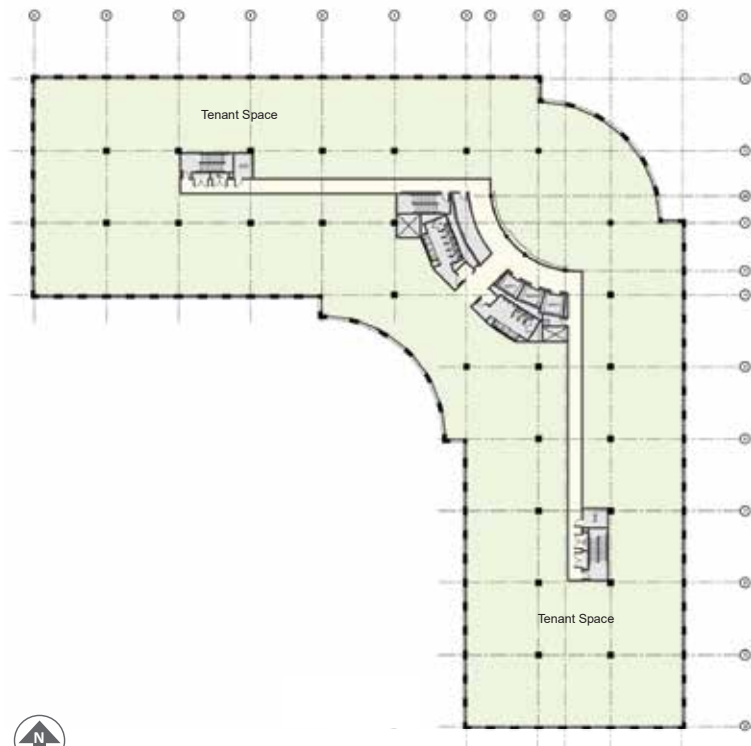
Available Floor Plans



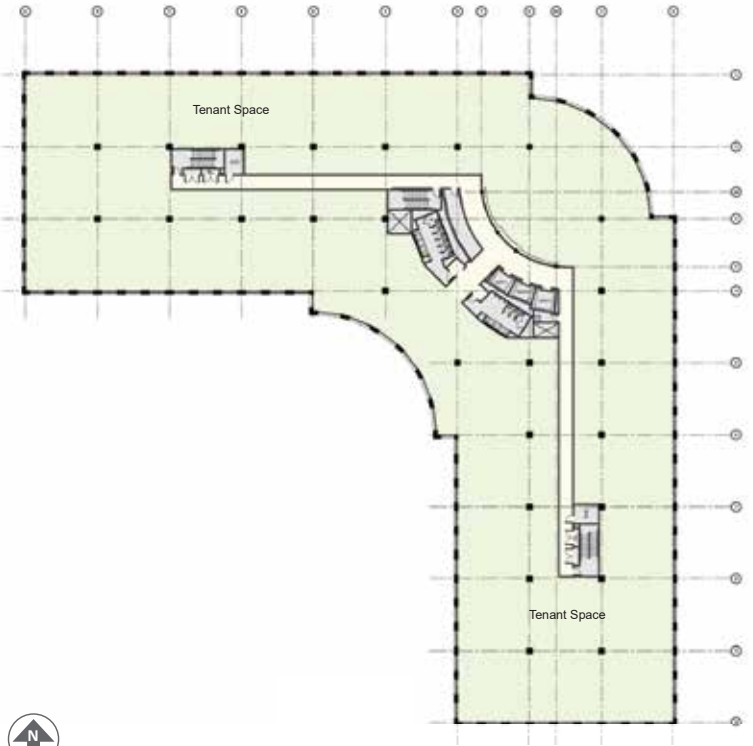
1ST FLOOR | 34,155 SF



2ND FLOOR | 38,133 SF



3RD FLOOR | 44,766 SF



4TH FLOOR | 44,766 SF

NAPERVILLE | ILLINOIS

215 W Diehl Rd



Local Area Amenities

Located in the heart of the Western E/W Corridor, 215 W Diehl Road has immediate access to the best of Naperville's numerous amenities, including Freedom Commons, a wide range of hotels, restaurants, recreational and retail opportunities.



Patrick Kiefer
630 693 0670
pkiefer@hiffman.com

FOR MORE INFORMATION
NAI Hiffman

Jim Adler
630 691 0605
jadler@hiffman.com