



1385 Madeline Lane, Elgin, IL 60124

A Superior Location.

Located within the Randall Point Business Park in Elgin, Illinois, 1385 Madeline Lane is a Class A industrial facility strategically positioned within the region’s immense transportation infrastructure, and is approximately 2 miles from the I-90 and Randall Road four-way interchange. The exceptional property location allows tenants to take advantage of Kane County’s low property taxes, abundant skilled area labor, and proximity to a variety of retail amenities.

- Class A Development**
- 130' Concrete Truck Court**
- T-5 Energy Efficient Lighting**
- Immediate access to Randall Road and I-90 full interchange**
- Growing Kane County industrial submarket**



Specifications

47,692 SF (SUITE 100)
AVAILABLE

5,292 SF
OFFICE AREA

30'
CLEAR HEIGHT

9
EXTERIOR DOCKS

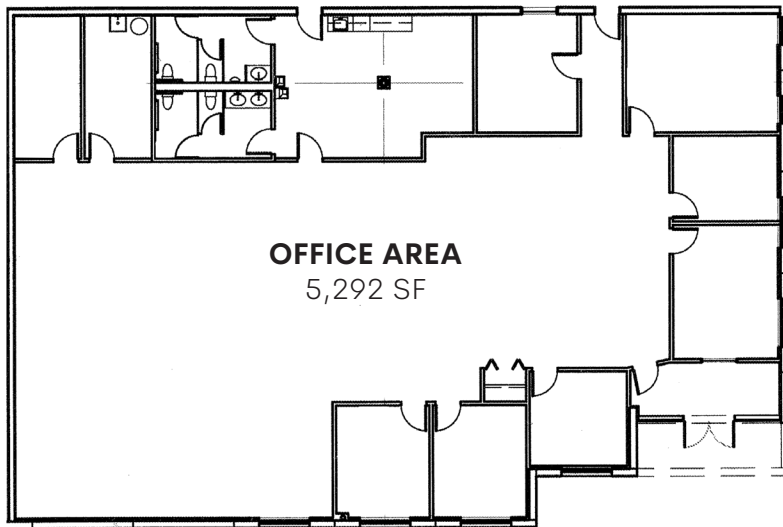
1
DRIVE IN DOOR

35± spaces
AUTO PARKING

225A @ 277/480V, 3P-4W
POWER SERVICE

ESFR
FIRE PROTECTION

46'8" x 50'
COLUMN SPACING



SITE AREA (TOTAL BUILDING)

In Acres 9.18 AC

BUILDING AREA

Total Building Size 165,960 SF

Office (Suite 100) 5,292 SF

Warehouse (Suite 100) 42,400 SF

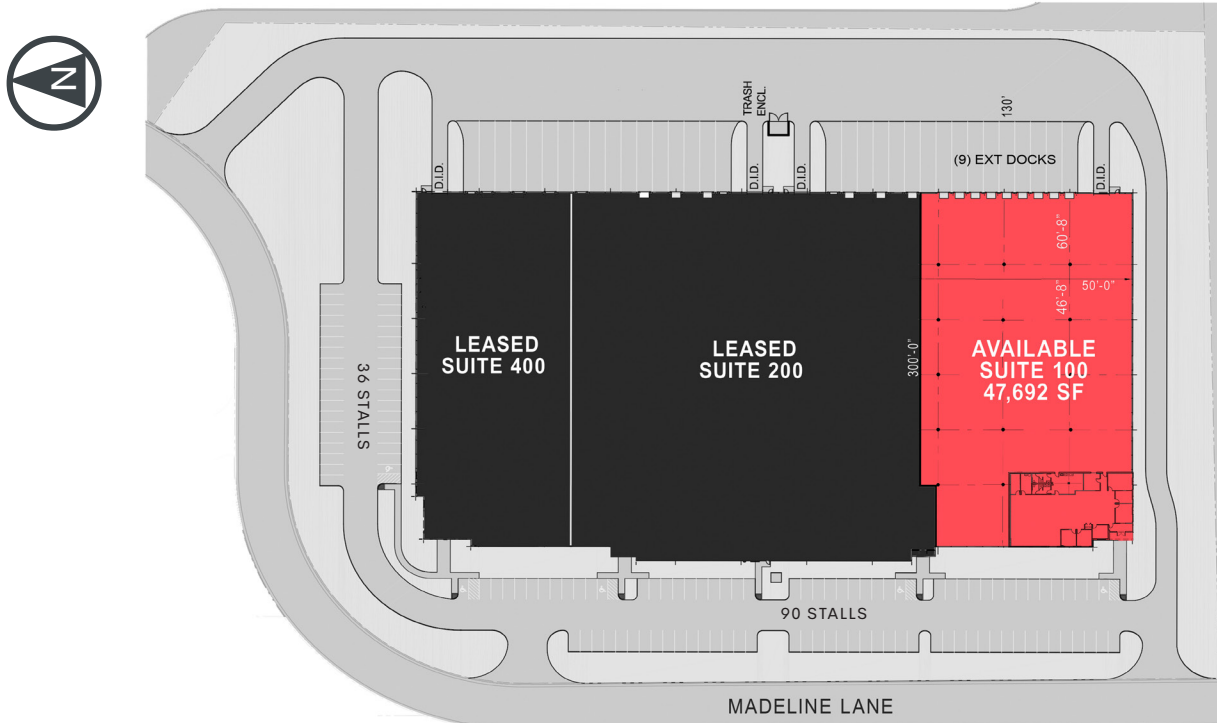
TOTAL 47,692 SF

COVERAGE

28.7%

PARKING

Auto 35± stalls



Contacts



Dan Leahy
D 630.691.0604
dleahy@hiffman.com
Lic. 475.124402

Steve Bass
D 630.317.0738
sbass@hiffman.com
Lic. 475.102892

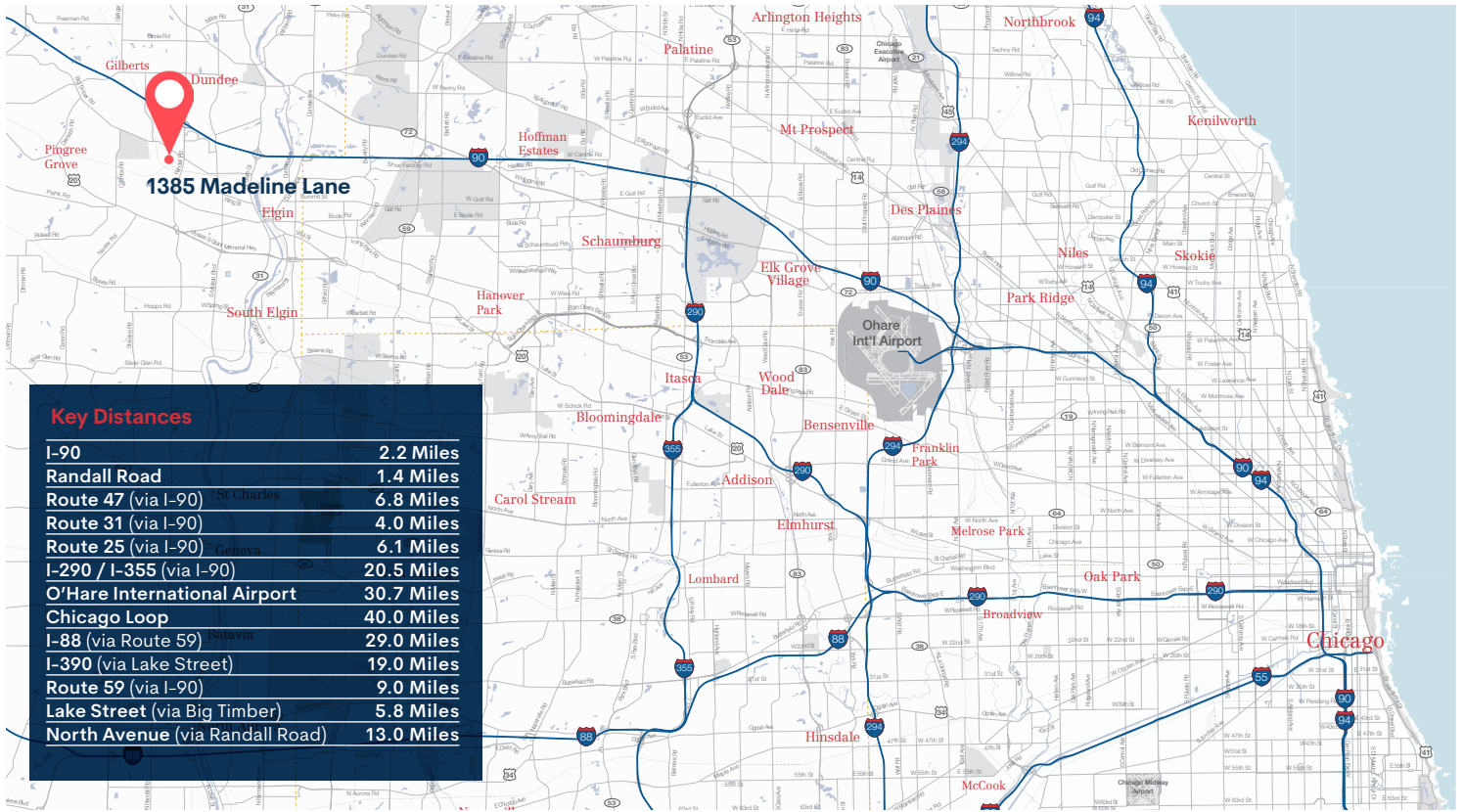
Bruce Granger
D 630.693.0648
bgranger@hiffman.com
Lic. 471.003059

Ryan Soule
D 214.393.5068
ryan.soule@brookfieldproperties.com



Area Map & Key Distances

Brookfield Properties



Contacts



Dan Leahy
 D 630.691.0604
 dleahy@hiffman.com
 Lic. 475.124402

Steve Bass
 D 630.317.0738
 sbass@hiffman.com
 Lic. 475.102892

Bruce Granger
 D 630.693.0648
 bgranger@hiffman.com
 Lic. 471.003059

Ryan Soule
 D 214.393.5068
 ryan.soule@brookfieldproperties.com