



100 Gary Avenue, Units A-B, C, Roselle, IL 60172

A Superior Location.

Situated in the highly desirable Northern DuPage industrial submarket, 100 N. Gary Avenue is located within the Turnberry Lakes Business Center in Roselle, Illinois. The facility is strategically positioned within the regions immense transportation infrastructure, and is less than one-half mile from the Gary Avenue and Elgin-O'Hare Expressway (I-390) interchange. The exceptional property location allows tenants to take advantage of DuPage County's low property taxes, access to abundant skilled area labor, and proximity to a variety retail amenities.

Specifications

54,915 SF (DIVISIBLE)
UNIT A-B: 37,739 SF
UNIT C: 17,176 SF

4,819 SF
OFFICE AREA
UNIT A-B: 2,462 SF
UNIT C: 2,357 SF

24'
CLEAR HEIGHT

12
EXTERIOR DOCKS (1-RAMPED)

153 spaces
AUTO PARKING
FULL BUILDING

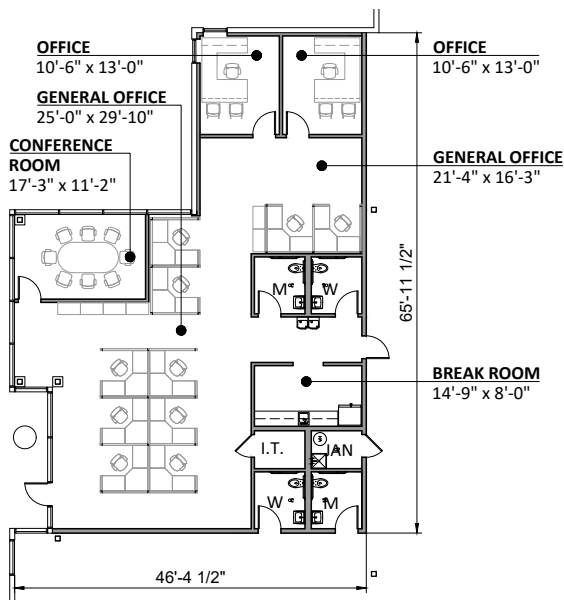
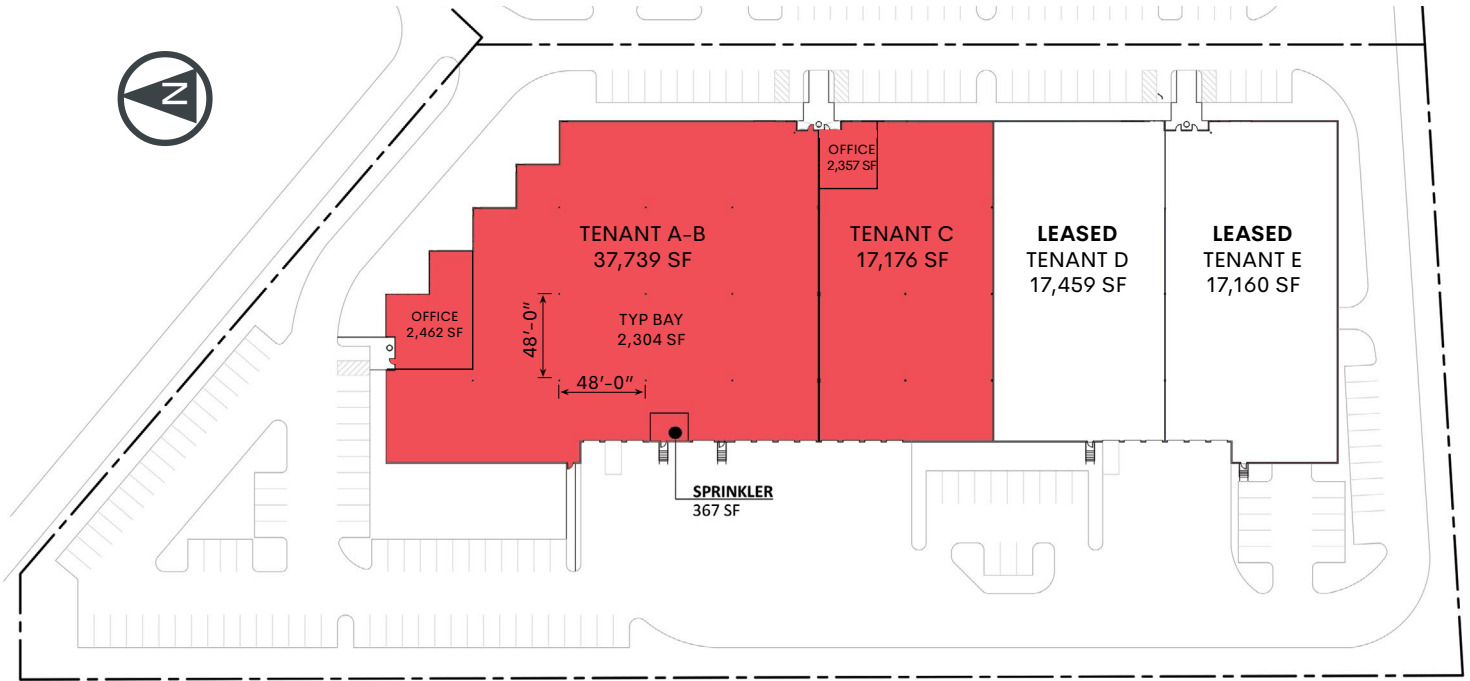
200A @ 277/480V, 3P, 4W
POWER SERVICE
MAIN BREAKER: 200A/3P
PANEL BOARD RATING: 225A

ESFR
FIRE PROTECTION

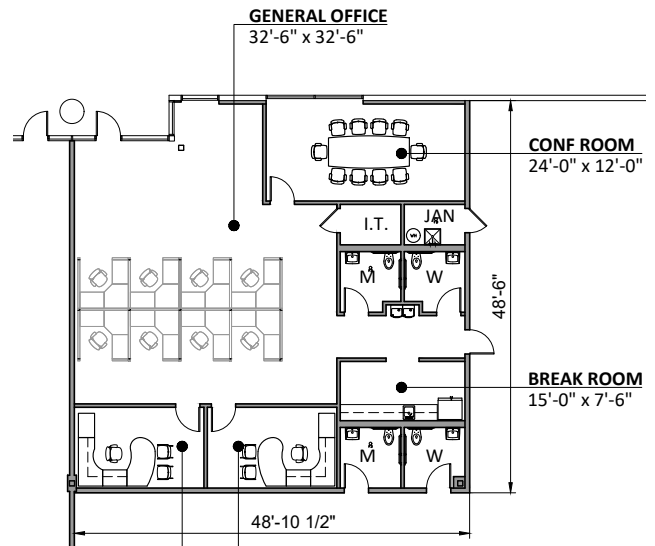
48' x 48'
COLUMN SPACING

150' Deep Truck Court
LED Lighting
Less than one-half mile to I-390 (Elgin-O'Hare Expressway)
Desirable Northern DuPage County industrial submarket





UNIT A-B OFFICE AREA
2,462 SF



(2) OFFICES
16'-0" x 10'-0" EA

UNIT C OFFICE AREA
2,357 SF

Contacts



Dan Leahy
D 630.691.0604
dleahy@hiffman.com
Lic. 475.124402

Sean Bostrom
D 847.539.0560
sbostrom@hiffman.com
Lic. 475.163766

Ryan Soule
D 214.393.5068
ryan.soule@brookfieldproperties.com



Area Map & Key Distances

Brookfield Properties



Contacts



Dan Leahy
 D 630.691.0604
 dleahy@hiffman.com
 Lic. 475.124402

Sean Bostrom
 D 847.539.0560
 sbostrom@hiffman.com
 Lic. 475.163766

Ryan Soule
 D 214.393.5068
 ryan.soule@brookfieldproperties.com