

Broadview Business Center

2600 S. 26th Street, Broadview, IL

Move In Ready Office Suites 1,480 SF – 5,014 SF



 **TradeLane**
Properties

 **NAI Hiffman**

Contact: Ryan Maher – NAI Hiffman
630.693.0677 | rmaher@hiffman.com

BUILDING HIGHLIGHTS

- ✓ Renovations Throughout (2020)
- ✓ Move-In-Ready Spec Suites Available
 - New LED lights
 - New paint
 - New carpet
 - New ceiling tiles
 - New finishes
- ✓ Paved Parking Lot
- ✓ Office Suites Available 1,480 SF – 5,014 SF
- ✓ Professionally Managed, Multi-Tenant Building
- ✓ Easy Interstate Access (1 Mile to I-290)
- ✓ Centrally Located
- ✓ Potential to Grow Within The Building
- ✓ Industrial Space is Also Available On Site



Contact: Ryan Maher – NAI Hiffman
630.693.0677 | rmaher@hiffman.com

Available Suites



*Suite 100 1,898 SF

*Suite 110 2,139 SF

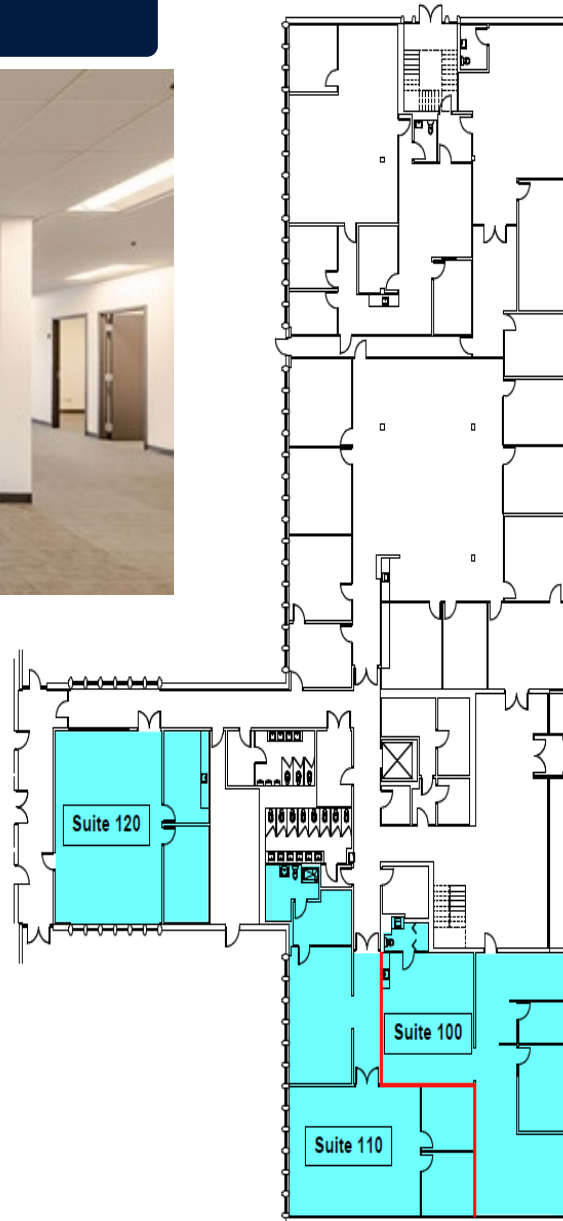
Suite 120 1,480 SF

*Can Combine Suites - 4,037 SF

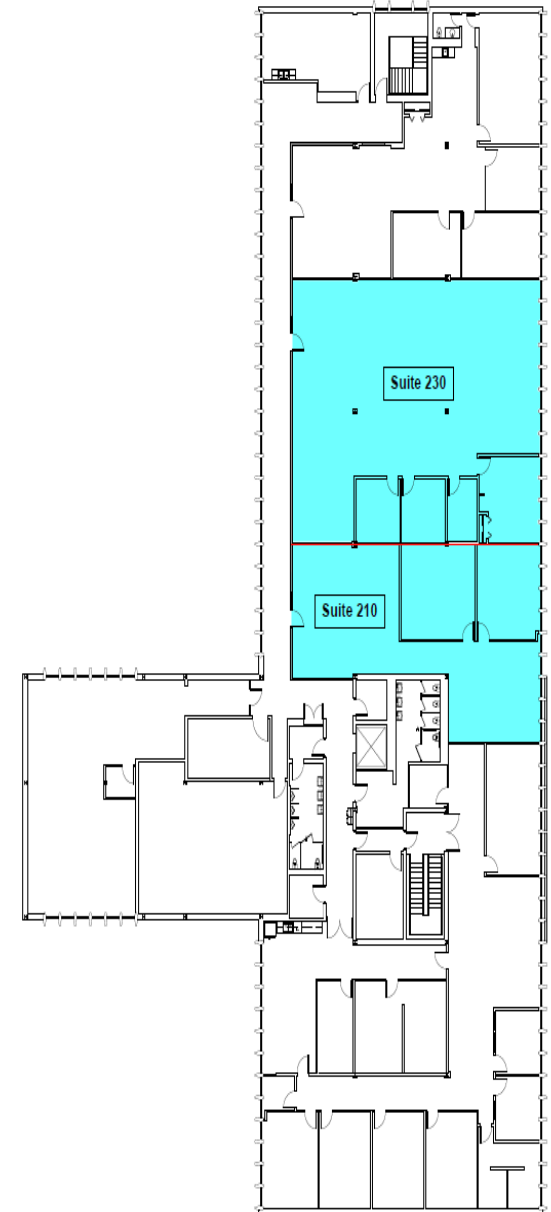
*Suite 210 1,891 SF

*Suite 230 3,123 SF

*Can Combine Suites - 5,020 SF



First Floor



Second Floor