

OAK LAWN MEDICAL CENTER

2,441 SF to ±10,000 SF
For Lease

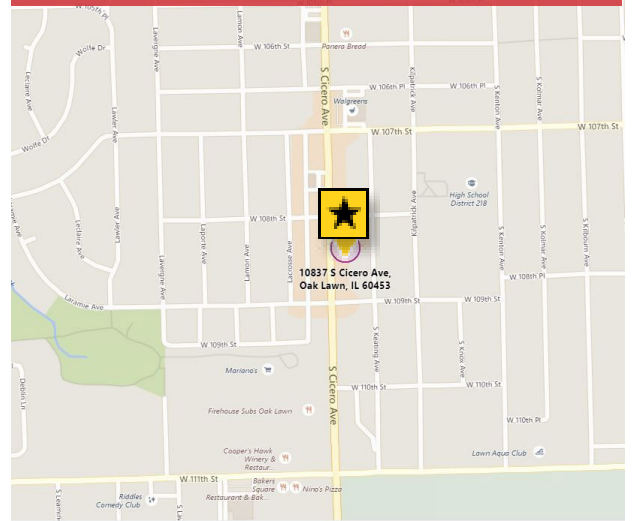


OAK LAWN MEDICAL CENTER
10837 S CICERO AVE
OAK LAWN, IL

PROPERTY DETAILS

- 26,324 SF Class “A” Medical Office Building
- High visibility and easy access location
- 2.3 miles from Advocate Christ Medical Center
- Join Advocate Medical Group, Quest Diagnostics, and Avicenna Pharmacy
- SPACE AVAILABLE:
 - > Suite 100 - 3,272 SF
 - > Suite 300* - 4,128 SF
 - > Suite 310* - 2,441 SF
 - > Suite 320* - 3,414 SF

**Suites 300/310/320 (entire 3rd Floor) can be combined & are Fully Built-Out Medical spaces with plumbing*



[PROPERTY WEBSITE](#)



Brian Edgerton

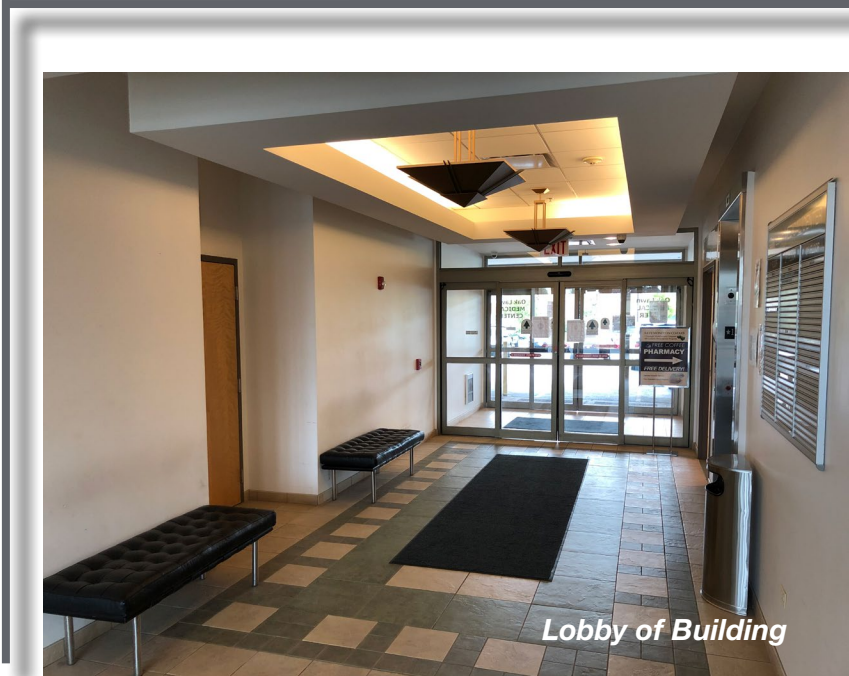
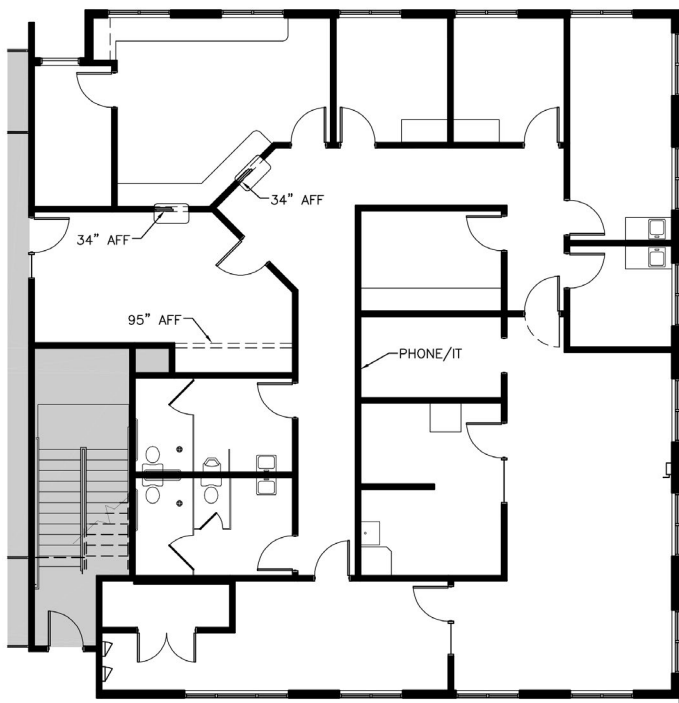
630 693 0671

bedgerton@hiffman.com

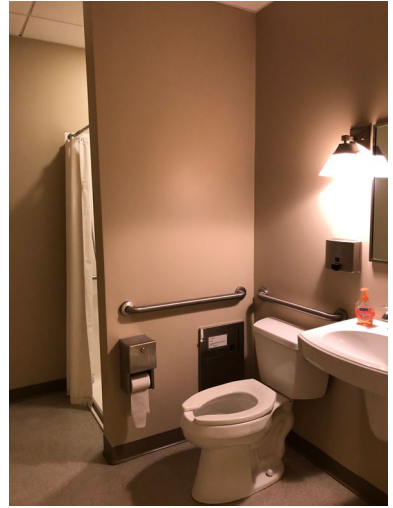
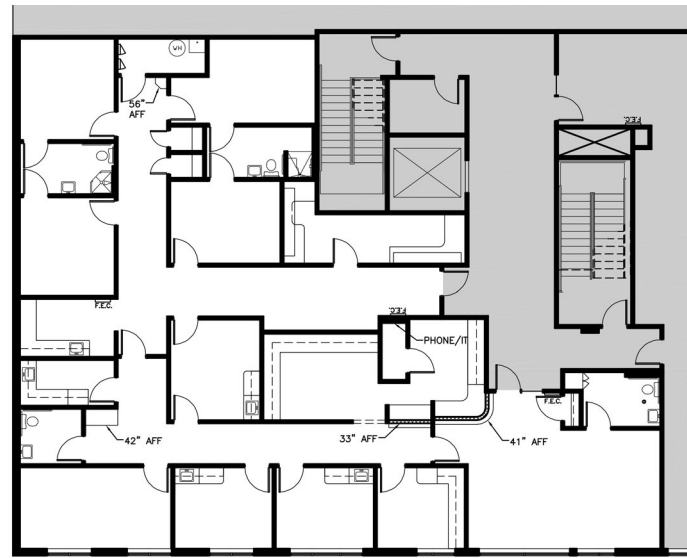
OAK LAWN MEDICAL CENTER

Floor Plans & Interior Photos

Suite 100 - 3,272 SF



Suite 300 - 4,128 SF



Suite 320 - 3,414 SF

