



4,892 SF Move-in Ready Space Available



THREE WOODFIELD LAKE

# 1,472-55,000 SF Office Space Available for Lease

900 NATIONAL PARKWAY | SCHAUMBURG ILLINOIS

## BUILDING NOTES

Three Woodfield Lake is a 100,287 square foot economic Class B+ multi-tenant building in the heart of Schaumburg. One of the most accessible locations in the Suburban Marketplace, Three Woodfield Lake has been a National Headquarters to Rabine Companies for over 10 years. Three Woodfield Lake also offers unmatched immediately adjacent amenities including over 100 different food options, fitness, banking and retail shopping. The building offers 24 hour access, onsite property management and full time engineer/maintenance. Three Woodfield offers full floor tenant opportunities, flexible size layouts and “ready to occupy” suites.

FOR MORE INFORMATION

**Steve Chrastka**

630 317 0746

[schrastka@hiffman.com](mailto:schrastka@hiffman.com)

**Jason Wurtz**

630 693 0692

[jwurtz@hiffman.com](mailto:jwurtz@hiffman.com)



## 900 NATIONAL PARKWAY SCHAUMBURG

Rent includes HVAC & 5 day janitorial services  
Ample parking  
Located near I-90, I-290 & Rte 53  
Just 15-minute drive to O'Hare International Airport  
Conveniently located near numerous Schaumburg  
area amenities including retail shopping, hotels,  
banking & day care  
On-site Ownership/Property Management  
24 hour access  
Ample Parking  
9 foot ceilings  
Abundant window line

**NAI**Hiffman



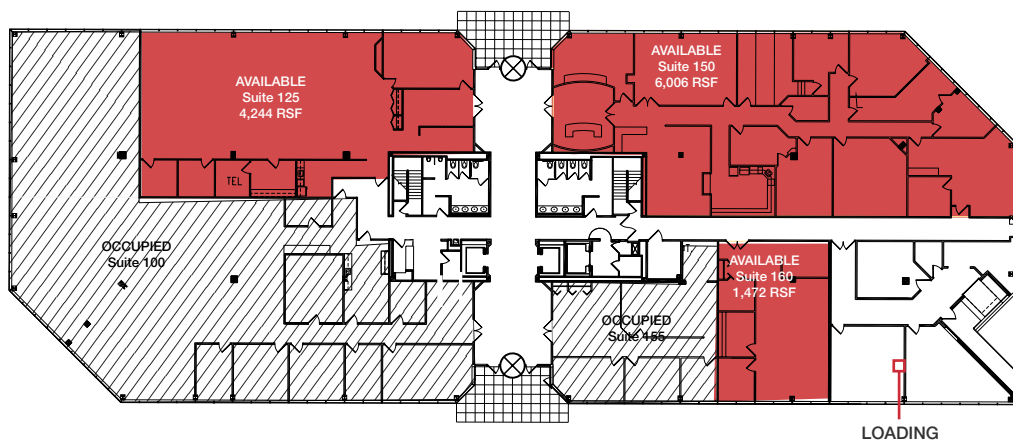
\$16.50 SF MG



288  
PARKING SPACES

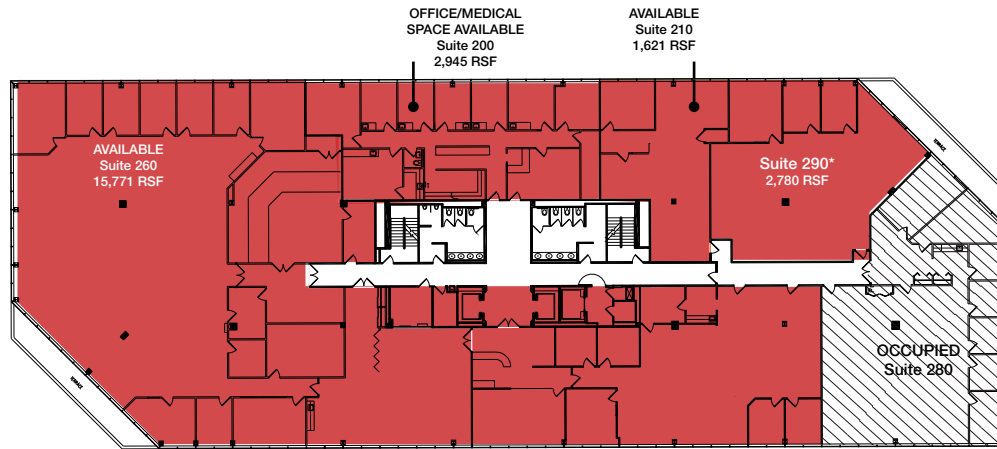


SCHAUMBURG  
LOCATION



### First Floor Space Available

Suite 125 - 4,244 SF  
 Suite 150 - 6,006 SF  
 Suite 160 - 1,472 SF

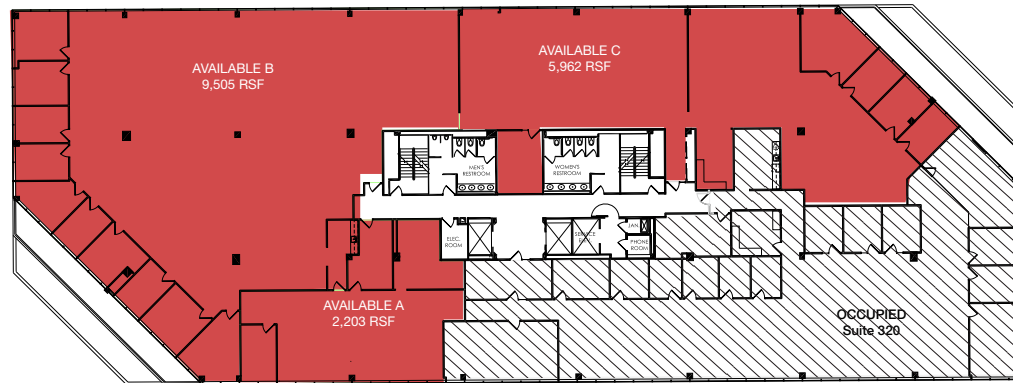


### Second Floor Space Available

Suite 200 - 2,945 SF  
 Suite 210 - 1,621 SF  
 Suite 290 - 2,780 SF  
 Suite 260 - 17,771 SF

Divisible from 1,621 - 18,563 SF

\* CAN BE AVAILABLE AS OWNERSHIP IS WILLING TO RELOCATE  
 DIVISIBLE FROM 1,621 - 18,653 SF



### Third Floor Space Available

Suite 300 17,670 SF  
 Suite A - 2,203 SF  
 Suite B - 9,505 SF  
 Suite C - 5,962 SF

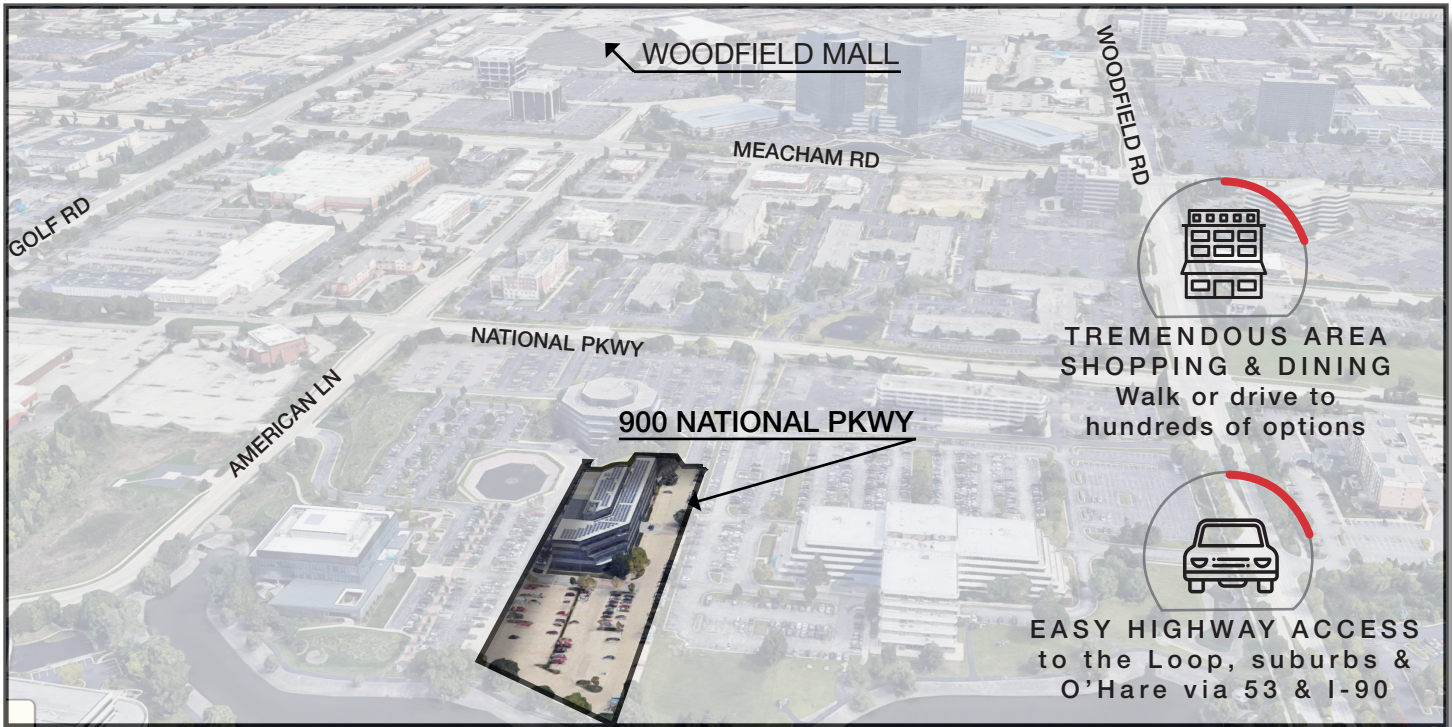
Divisible from 2,203 - 17,670 SF



### Fourth Floor Space Available

Suite 400 - 3,717 SF  
 Suite 420 - 6,524 SF  
 Suite 460 - 6,872 SF  
 Suite 470 - 4,892 SF

Divisible from 3,717 - 22,005 SF



900 NATIONAL PARKWAY, SCHAUMBURG, IL

# Office Space for Lease



**Steve Chrastka**

630 317 0746

schrastka@hiffman.com

**Jason Wurtz**

630 693 0647

jwurtz@hiffman.com