

FIRST INDEPENDENCE LOGISTICS CENTER

2021 WOODHAVEN ROAD, PHILADELPHIA, PA 19116



100,272 SF | FOR LEASE

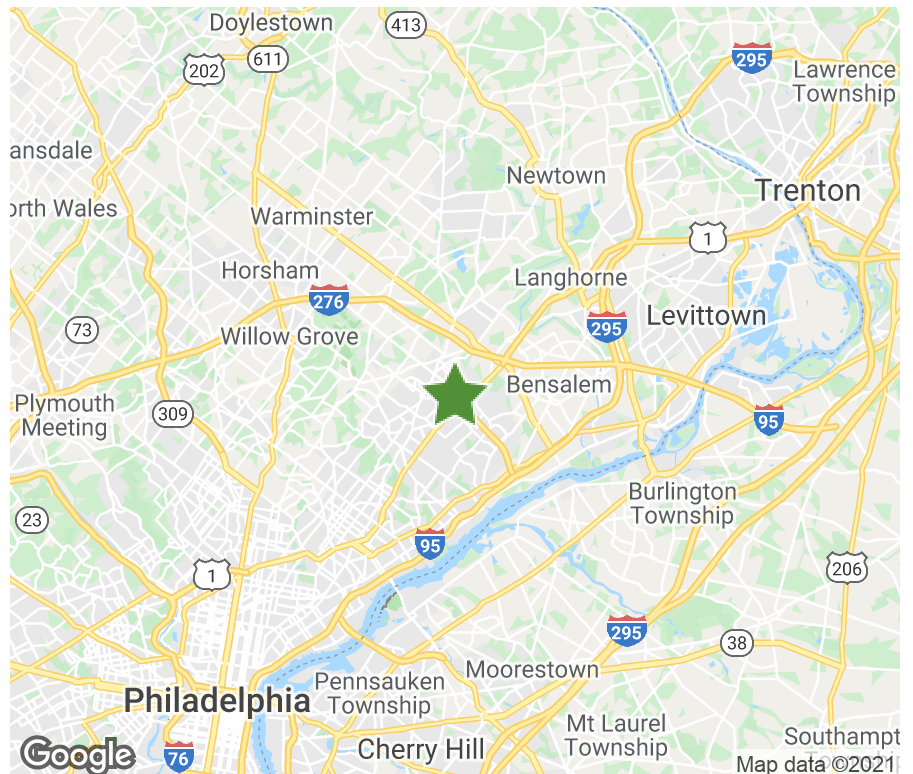
First Independence Logistics Center is located in close proximity to Rt. 1, I-276 and I-95.

PROPERTY SPECIFICATIONS

Available Space:	100,272 SF
Total Building Size:	100,272 SF
Office SF:	2,860
Warehouse SF:	97,412
Ceiling Height:	32'
Dock High Doors:	16
Drive In Doors:	1
Sprinkler:	ESFR
Trailer Stalls:	16
Lighting:	LED Fixtures

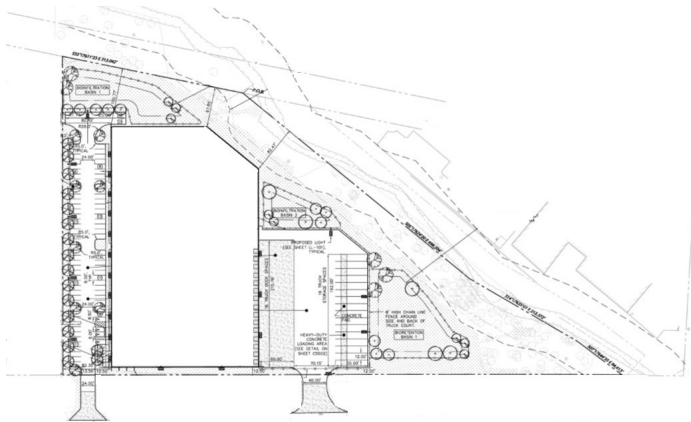
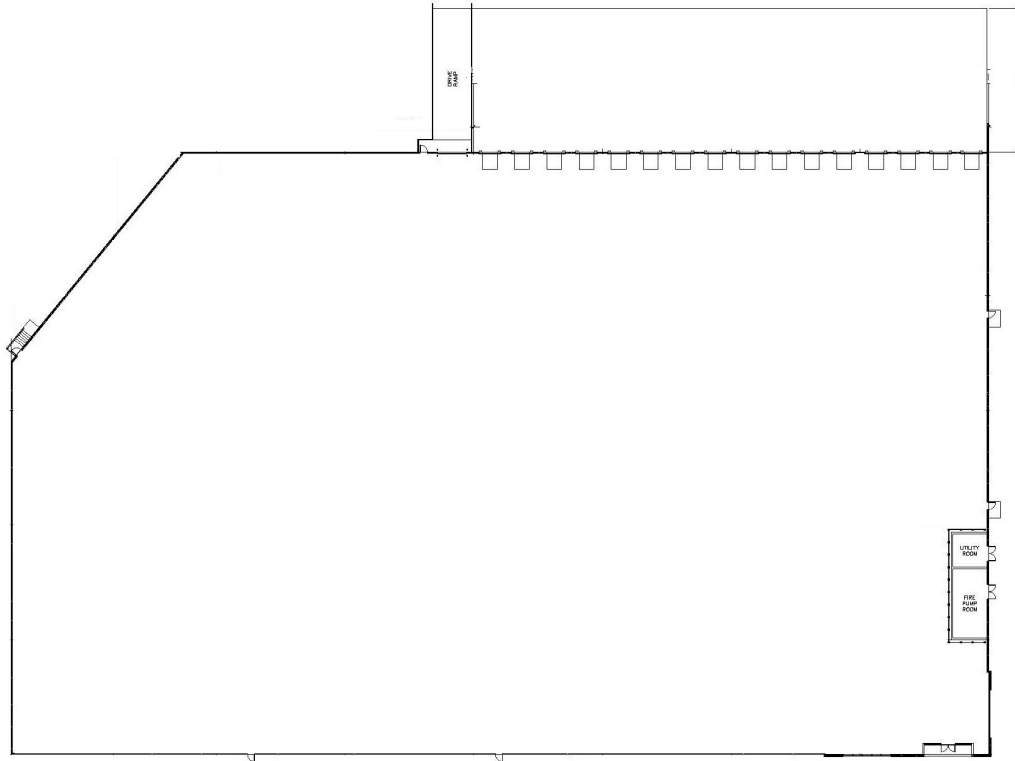
PROPERTY HIGHLIGHTS

- 4 miles to I-95
- 4 miles to I-276 (PA Turnpike)
- 19 Miles to NJ Turnpike
- 18 Miles to Center City Philadelphia
- 22 Miles to Port of Philadelphia ("Philaport")
- 28 Miles Philadelphia International Airport



FIRST INDEPENDENCE LOGISTICS CENTER

100,272 SF | FOR LEASE



OWNER CONTACT

John Hanlon

Sr. Investment/Development Officer

973.852.4027

jhanlon@firstindustrial.com



17 East Gay Street, Suite 302

West Chester, PA 19380

610-594-9700

All information furnished regarding the property for sale, rental or financing is obtained from sources deemed reliable. No representation is made to the accuracy thereof and is submitted subject to errors, omissions, change of price rental or other conditions, prior sale, lease, or financing, or withdrawal without notice. First Industrial Realty Trust, Inc. represents the Seller in this transaction and as such owes all duties and obligations thereto.