

805B S Great Southwest Parkway

Grand Prairie, TX 75051



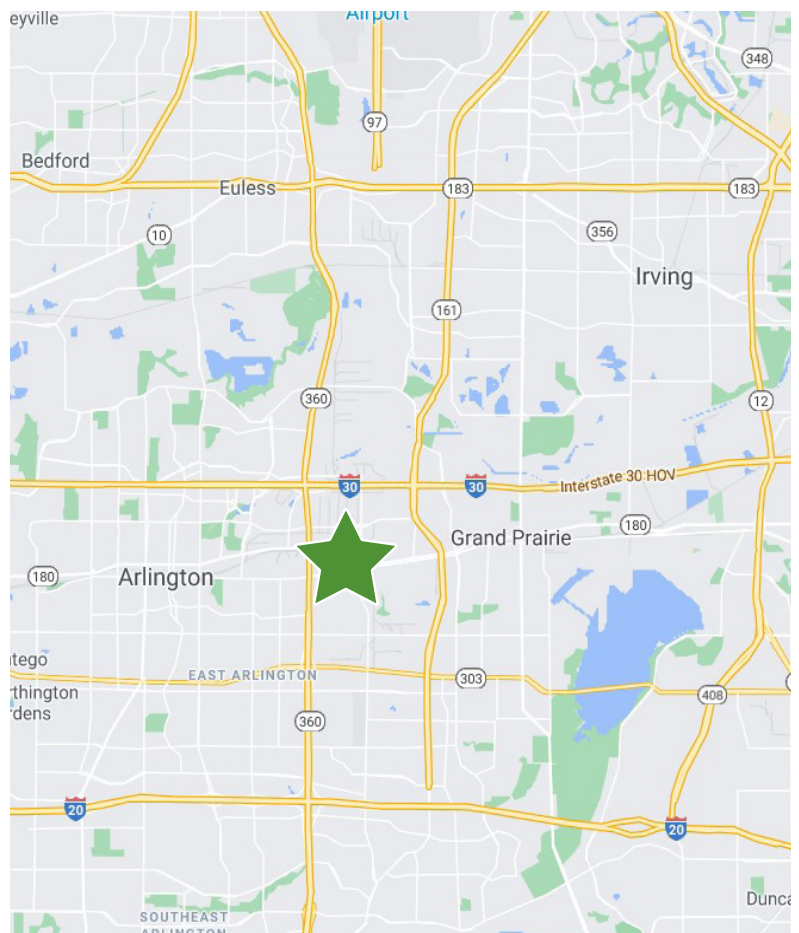
11,270 SQUARE FEET | FOR LEASE

PROPERTY SPECIFICATIONS

Available Space:	11,270 SF
Office Space:	555 SF
Ceiling Height:	18'
Dock Doors:	5

PROPERTY HIGHLIGHTS

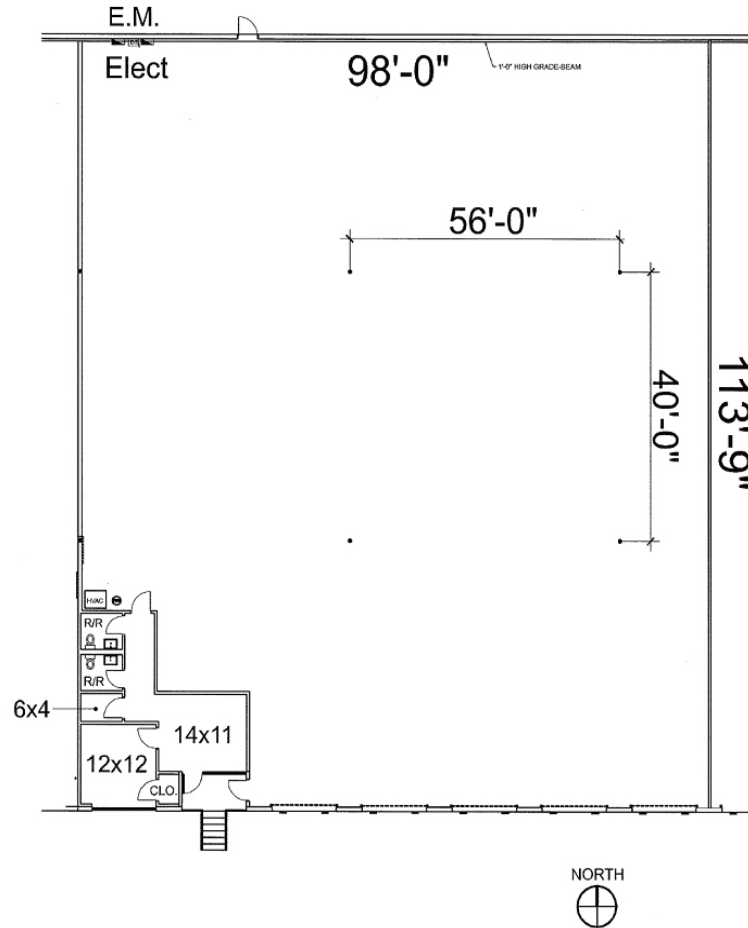
- Fenced truck court
- Prime location, just minutes from SH-360, I-30, I-20, and the DFW International Airport
- Owned and managed by First Industrial Realty Trust, Inc.



805B S Great Southwest Parkway

11,270 SQUARE FEET | FOR LEASE

SITE PLAN



BROKER CONTACT

Brian Gilchrist
First Vice President
214.979.6394
brian.gilchrist@cbre.com

Steve Koldyke
First Vice President
214.979.6381
steve.koldyke@cbre.com

OWNER CONTACT

Robert Allen
Senior Regional Director
972.419.5715
rallen@firstindustrial.com

CBRE

FIRST
INDUSTRIAL
REALTY · TRUST

5310 Harvest Hill Road, Suite 270 Dallas, TX 75230 972.386.4700

www.firstindustrial.com

All information furnished regarding the property for sale, rental or financing is obtained from sources deemed reliable. No representation is made to the accuracy thereof and is submitted subject to errors, omissions, change of price rental or other conditions, prior sale, lease, or financing, or withdrawal without notice. First Industrial Realty Trust, Inc. represents the Seller in this transaction and as such owes all duties and obligations thereto.