

FOR LEASE

Office Space For Lease

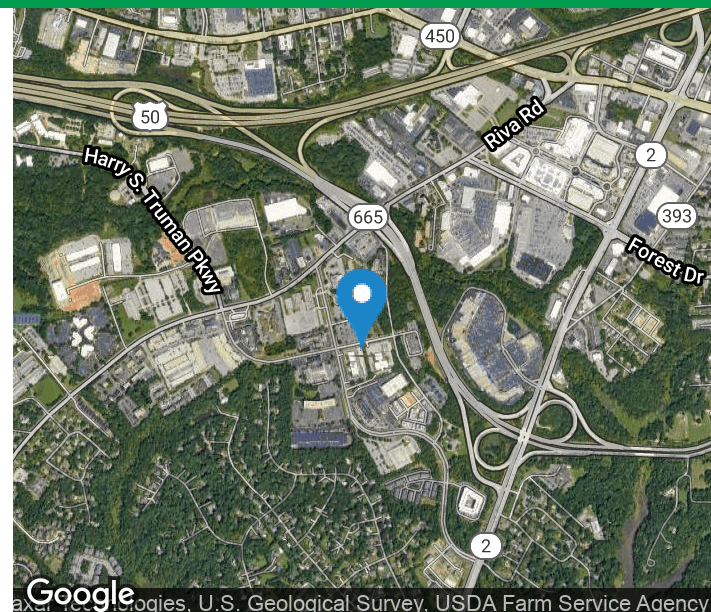
175 Admiral Cochrane Drive | Annapolis, MD



Premiere Annapolis Office Space

PROPERTY HIGHLIGHTS

- Premiere Multi-tenant Class A Office Building
- Located in the Annapolis Office Submarket
- Updated Common Areas and Modern Lobby
- Asking Rate: \$32.00 PSF Full Service
- Suite 203: 4,098 SF
- Suite 204: 2,406 SF
- Suite 303: 2,079 SF
- Convenient Access to Rte 50, Rte 2 and I-97
- Close Proximity to a Variety of Nearby Amenities



For Information Contact:

Laurie Murphy-Zuiderhof, Senior Vice President
lmzuiderhof@murphycre.com
443.756.5102

Joe Sera, Vice President
Jsera@murphycre.com
410.266.1113 x108

Murphy Commercial Real Estate Services | murphycre.com | Main 410.266.1113

8684 Veterans Hwy., Suite 203, Millersville, MD 21108

FOR LEASE

Office Space For Lease

175 Admiral Cochrane Drive | Annapolis, MD



For Information Contact:

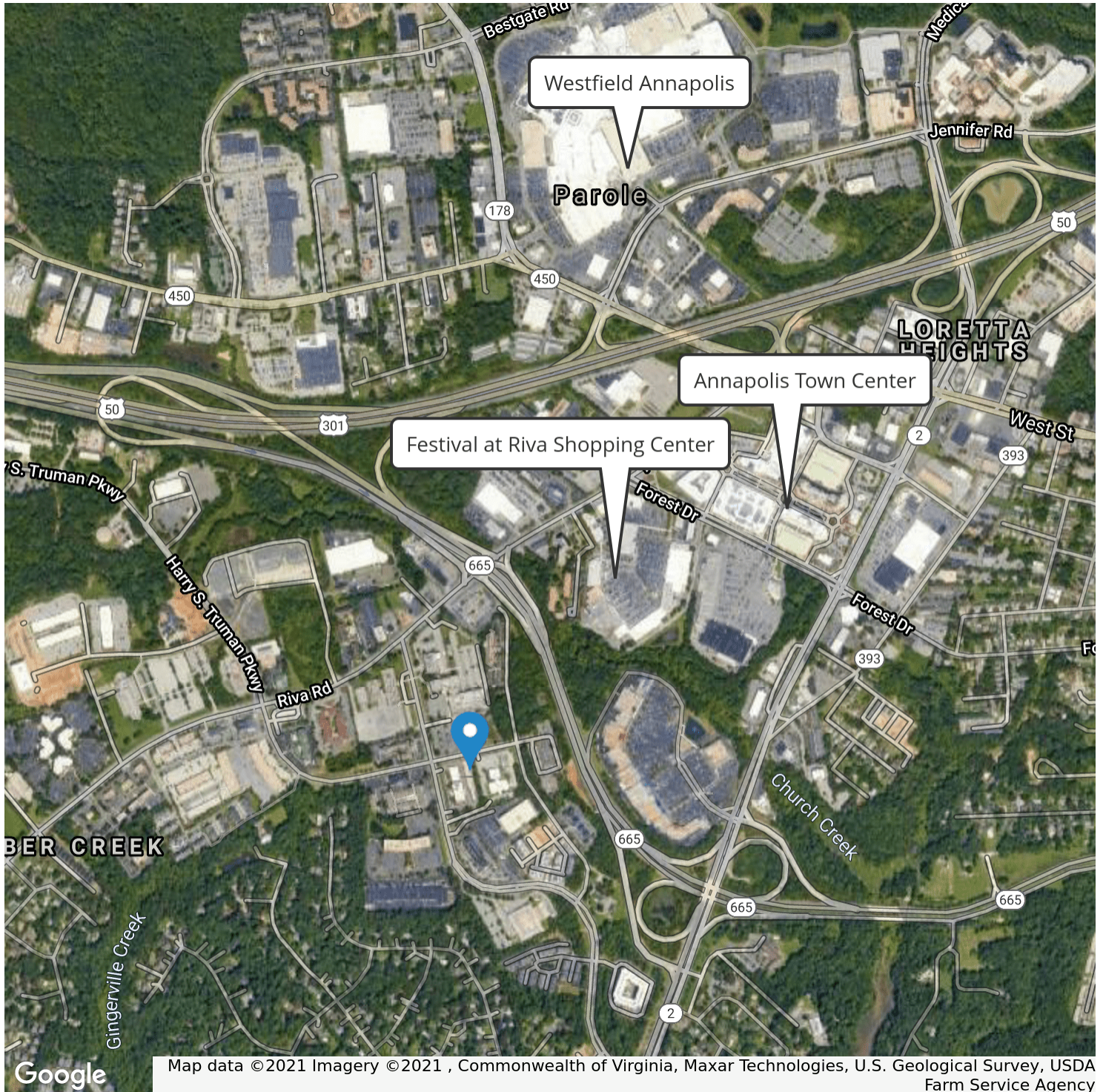
Laurie Murphy-Zuiderhof, Senior Vice President
lmzuiderhof@murphycre.com
443.756.5102

Joe Sera, Vice President
Jsera@murphycre.com
410.266.1113 x108

FOR LEASE

Office Space For Lease

175 Admiral Cochrane Drive | Annapolis, MD



Google

Map data ©2021 Imagery ©2021, Commonwealth of Virginia, Maxar Technologies, U.S. Geological Survey, USDA Farm Service Agency

For Information Contact:

Laurie Murphy-Zuiderhof, Senior Vice President
lmzuiderhof@murphycre.com
443.756.5102

Joe Sera, Vice President
Jsera@murphycre.com
410.266.1113 x108

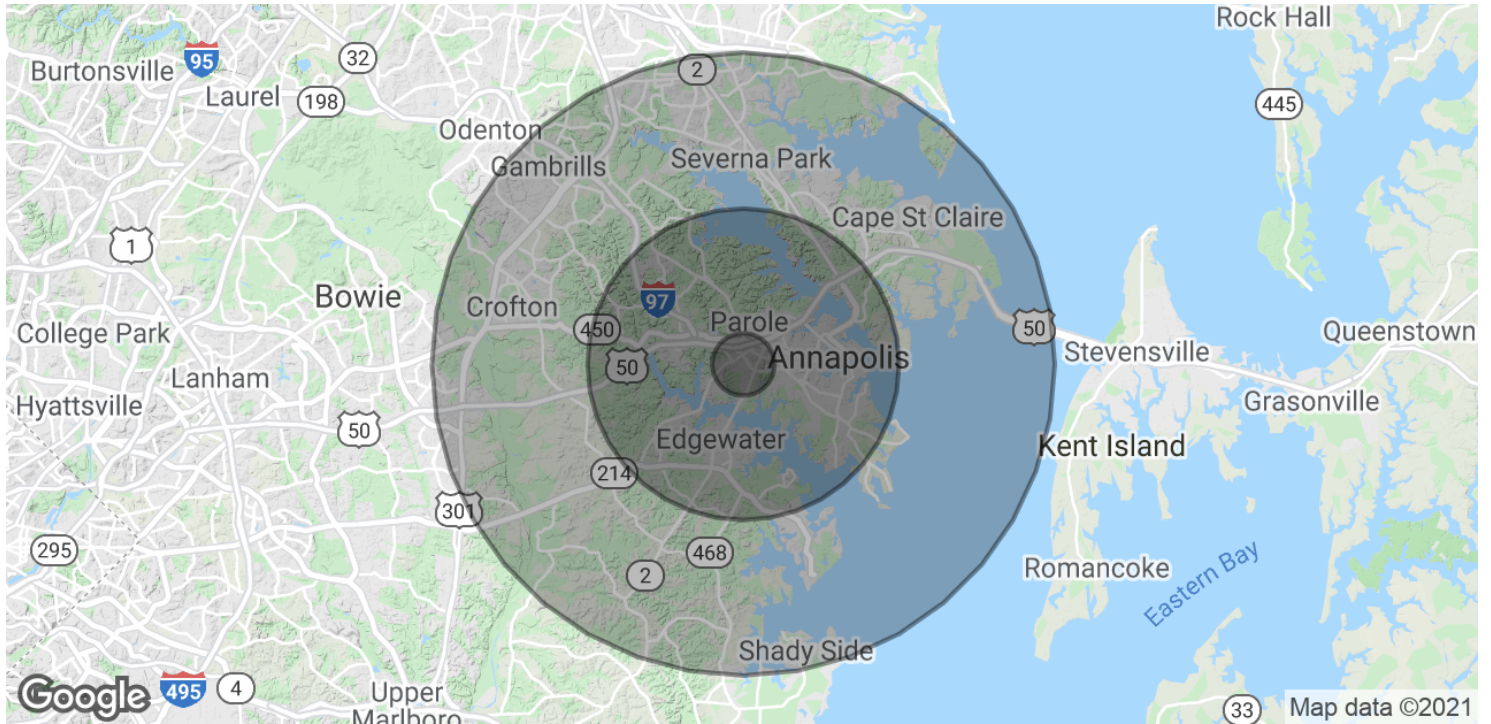
Murphy Commercial Real Estate Services | murphycre.com | Main 410.266.1113

8684 Veterans Hwy., Suite 203, Millersville, MD 21108

FOR LEASE

Office Space For Lease

175 Admiral Cochrane Drive | Annapolis, MD



POPULATION	1 MILE	5 MILES	10 MILES
Total Population	3,653	105,195	280,016
Average age	44.9	41.7	41.4
Average age (Male)	41.0	39.3	40.0
Average age (Female)	48.2	44.2	42.8

HOUSEHOLDS & INCOME	1 MILE	5 MILES	10 MILES
Total households	1,704	42,152	106,014
# of persons per HH	2.1	2.5	2.6
Average HH income	\$124,079	\$111,610	\$119,324
Average house value	\$540,950	\$567,739	\$547,348

* Demographic data derived from 2010 US Census

For Information Contact:

Laurie Murphy-Zuiderhof, Senior Vice President | Joe Sera, Vice President
lmzuiderhof@murphycre.com | Jsera@murphycre.com
443.756.5102 | 410.266.1113 x108