

For Sale

Land - Lot 3

2.9 Acres



Prairie View Commercial Lot 3 - 2.9 Acres

Lot 3 Prairie View Ln SW
Cedar Rapids, Iowa 52404

Property Highlights

- Located near Cedar Rapids Airport
- Interstate 380 and Highway 30

Property Description

Prairie View Office Park Commercial Lot For Sale. Lot is situated at the office park entrance and Wright Brothers Blvd.

OFFERING SUMMARY

Sale Price	\$675,000
Lot Size	2.9 Acres

DEMOGRAPHICS

Stats	Population	Avg. HH Income
1 Mile	241	\$80,709
5 Miles	25,612	\$54,954
10 Miles	180,255	\$64,573

For more information

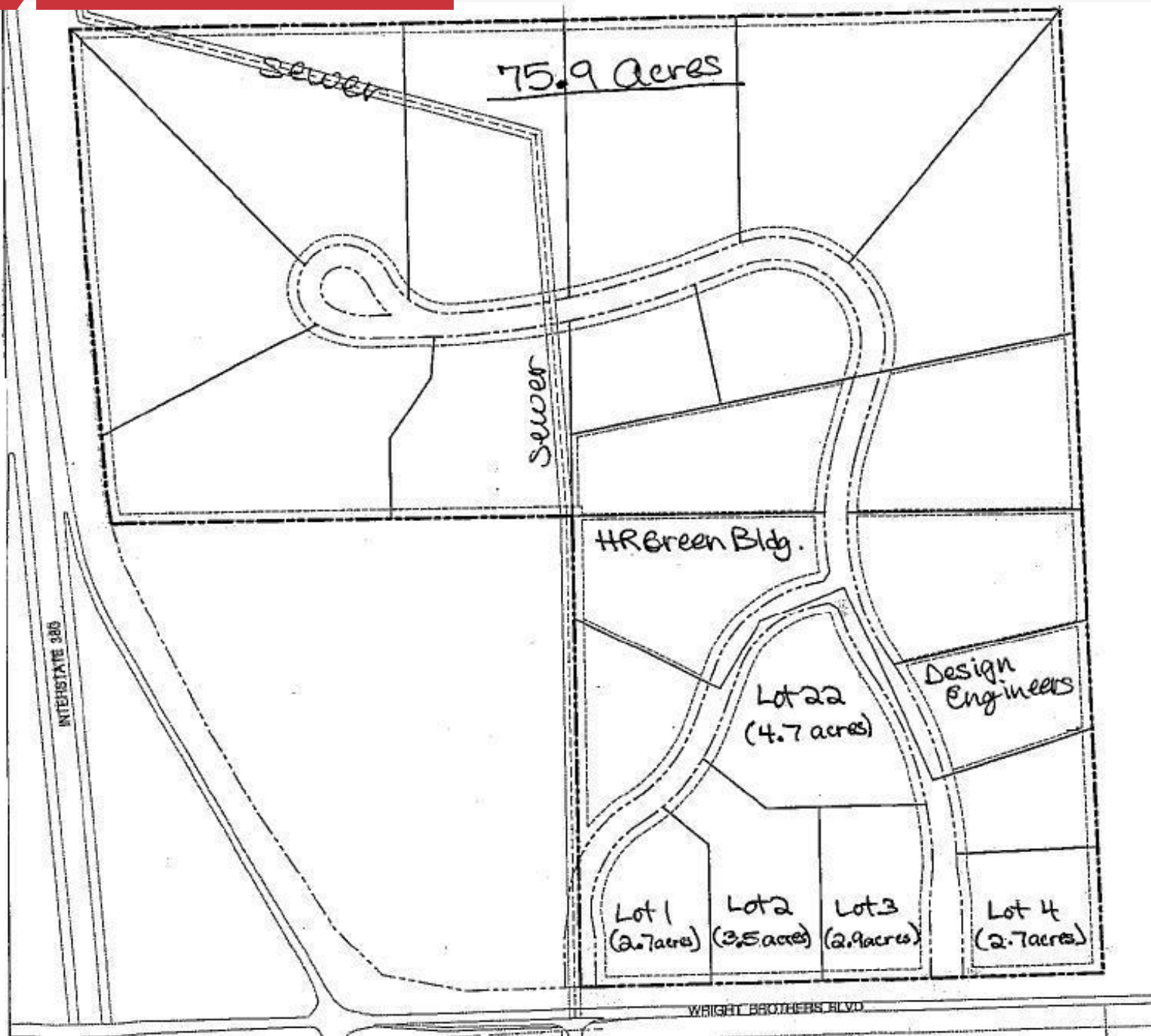
Jeremy Tipton, CCIM

O: 319 378 6891
jtipton@iowarealty.com

For Sale

Land - Lot 3

2.9 Acres | \$232,759 / AC



For Sale

Land

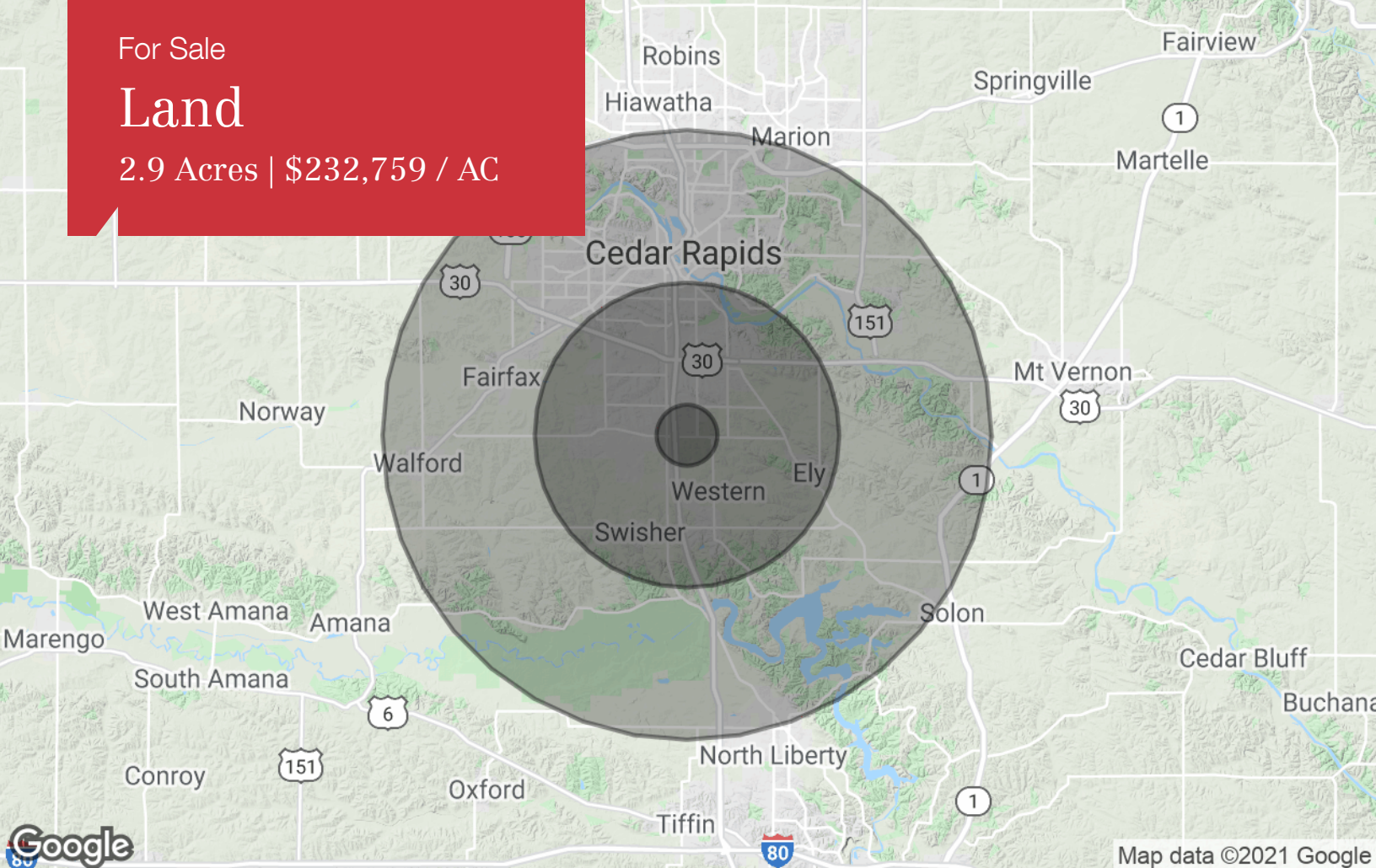
2.9 Acres | \$232,759 / AC



For Sale

Land

2.9 Acres | \$232,759 / AC



Population

	1 Mile	5 Miles	10 Miles
TOTAL POPULATION	241	25,612	180,255
MEDIAN AGE	37.1	31.1	36.2
MEDIAN AGE (MALE)	36.9	30.4	34.8
MEDIAN AGE (FEMALE)	37.5	31.4	37.4

Households & Income

	1 Mile	5 Miles	10 Miles
TOTAL HOUSEHOLDS	91	10,487	77,274
# OF PERSONS PER HH	2.6	2.4	2.3
AVERAGE HH INCOME	\$80,709	\$54,954	\$64,573
AVERAGE HOUSE VALUE	\$157,351	\$129,332	\$152,319

Race

	1 Mile	5 Miles	10 Miles
% WHITE	99.2%	91.1%	91.7%
% BLACK	0.0%	6.2%	5.1%
% ASIAN	0.4%	1.2%	1.7%
% HAWAIIAN	0.0%	0.0%	0.1%
% INDIAN	0.0%	0.4%	0.3%
% OTHER	0.4%	1.0%	1.1%

Ethnicity

	1 Mile	5 Miles	10 Miles
% HISPANIC	0.8%	2.7%	2.7%

* Demographic data derived from 2010 US Census