

For Sale

Land - Lot 1

2.7 Acres

Prairie View Commercial Lot 1 - 2.7 Acres

Lot 1 Earhart Ln SW
Cedar Rapids, Iowa 52404

Property Highlights

- Across from the New Pilot Truck Stop on Earhart Lane
- Located near Cedar Rapids Airport
- Interstate 380 and Highway 30

Property Description

Prairie View Office Park Commercial Lot For Sale. Lot is situated at the office park entrance of Earhart Lane and Wright Brothers Blvd.

OFFERING SUMMARY

| | |
|-------------------|-----------|
| Sale Price | \$705,672 |
| Lot Size | 2.7 Acres |

DEMOGRAPHICS

| Stats | Population | Avg. HH Income |
|-----------------|-------------------|-----------------------|
| 1 Mile | 241 | \$80,709 |
| 5 Miles | 25,612 | \$54,954 |
| 10 Miles | 180,255 | \$64,573 |

For more information

Jeremy Tipton, CCIM

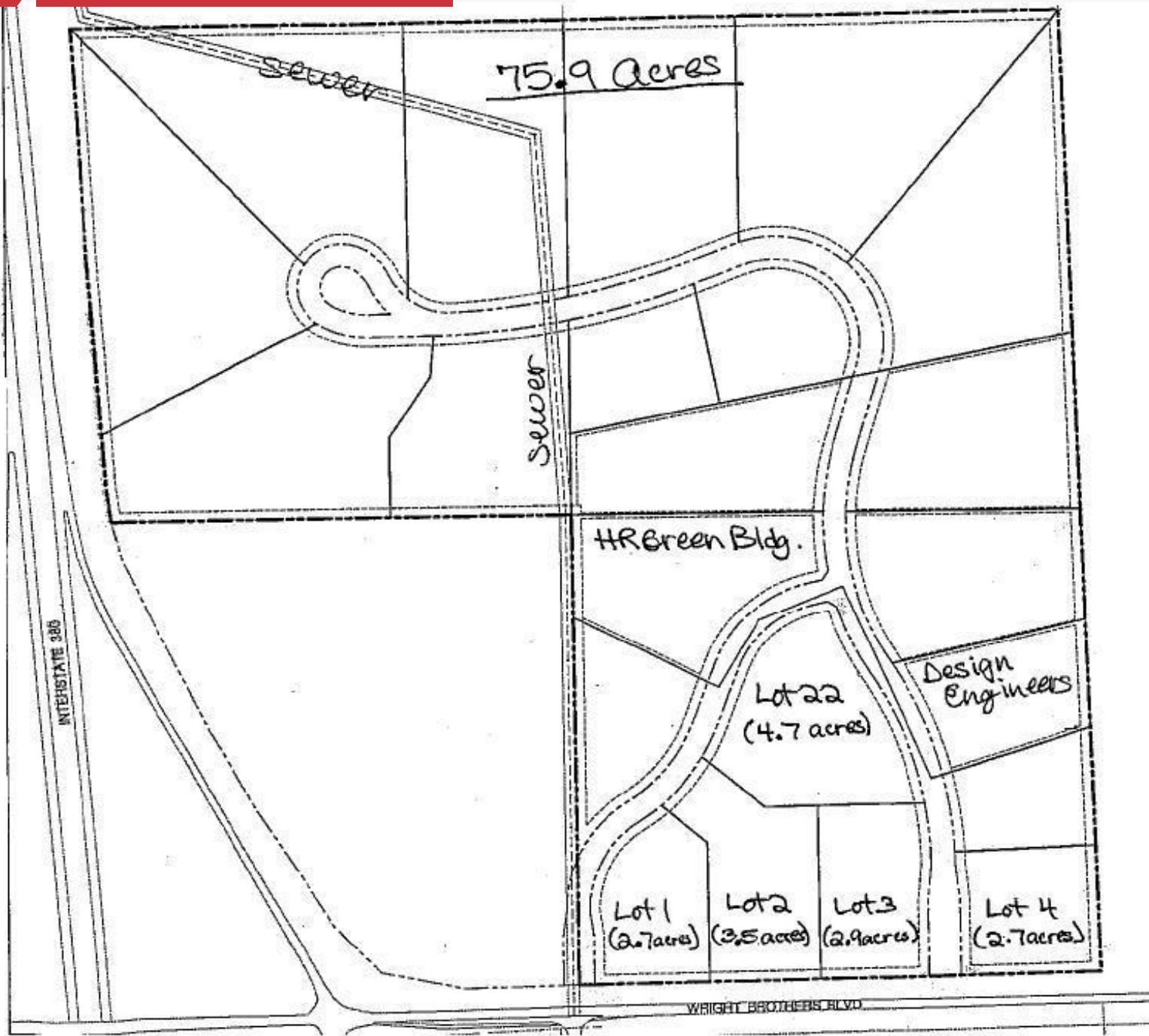
O: 319 378 6891

jtipton@iowarealty.com

For Sale

Land - Lot 1

2.7 Acres | \$261,360 / AC



For Sale

Land - Lot 1

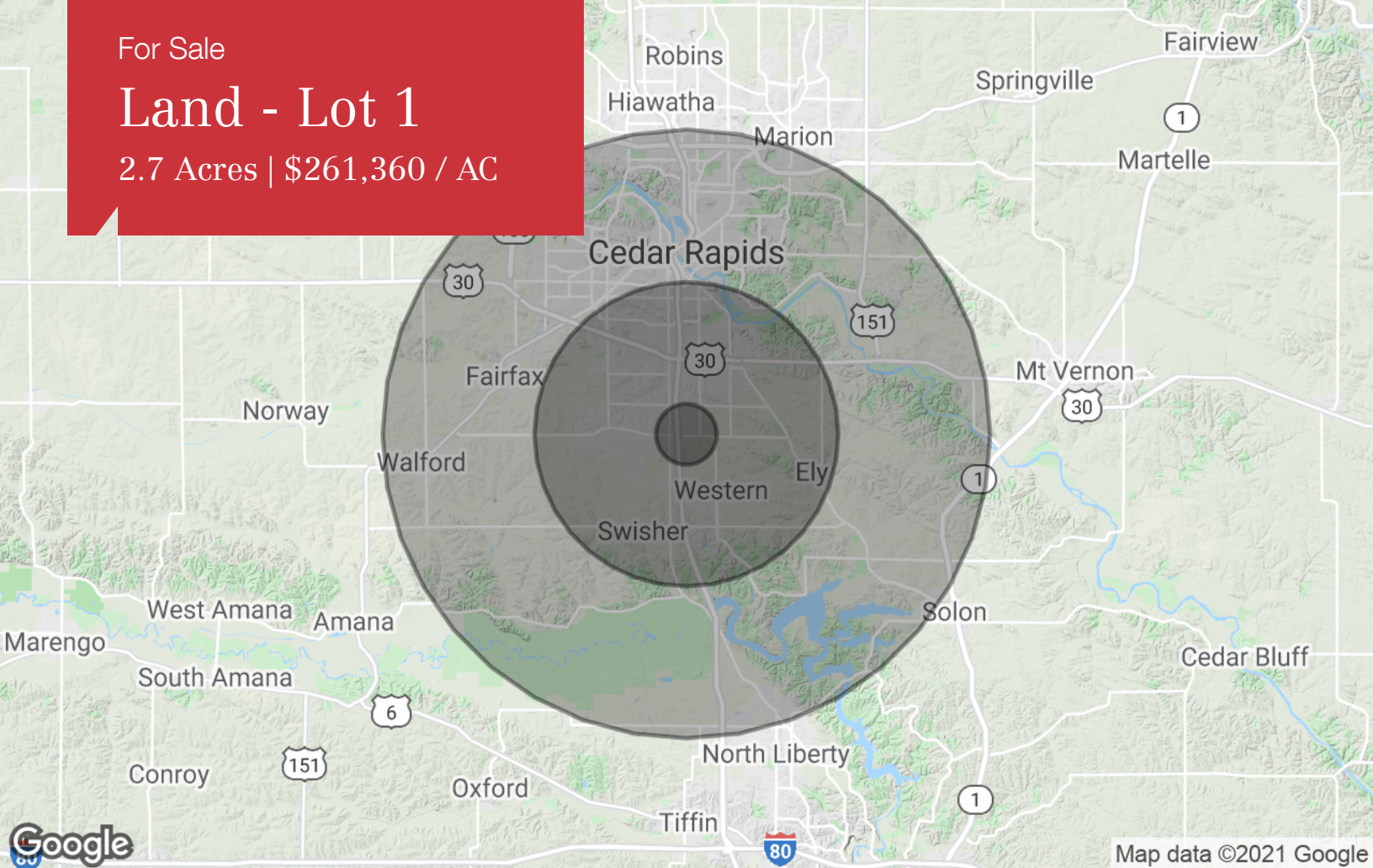
2.7 Acres | \$261,360 / AC



For Sale

Land - Lot 1

2.7 Acres | \$261,360 / AC



Population

| | 1 Mile | 5 Miles | 10 Miles |
|---------------------|--------|---------|----------|
| TOTAL POPULATION | 241 | 25,612 | 180,255 |
| MEDIAN AGE | 37.1 | 31.1 | 36.2 |
| MEDIAN AGE (MALE) | 36.9 | 30.4 | 34.8 |
| MEDIAN AGE (FEMALE) | 37.5 | 31.4 | 37.4 |

Households & Income

| | 1 Mile | 5 Miles | 10 Miles |
|---------------------|-----------|-----------|-----------|
| TOTAL HOUSEHOLDS | 91 | 10,487 | 77,274 |
| # OF PERSONS PER HH | 2.6 | 2.4 | 2.3 |
| AVERAGE HH INCOME | \$80,709 | \$54,954 | \$64,573 |
| AVERAGE HOUSE VALUE | \$157,351 | \$129,332 | \$152,319 |

Race

| | 1 Mile | 5 Miles | 10 Miles |
|------------|--------|---------|----------|
| % WHITE | 99.2% | 91.1% | 91.7% |
| % BLACK | 0.0% | 6.2% | 5.1% |
| % ASIAN | 0.4% | 1.2% | 1.7% |
| % HAWAIIAN | 0.0% | 0.0% | 0.1% |
| % INDIAN | 0.0% | 0.4% | 0.3% |
| % OTHER | 0.4% | 1.0% | 1.1% |

Ethnicity

| | 1 Mile | 5 Miles | 10 Miles |
|------------|--------|---------|----------|
| % HISPANIC | 0.8% | 2.7% | 2.7% |

* Demographic data derived from 2010 US Census