

For Sale

Land - Lot 22

4.7 Acres

Prairie View Commercial Lot 22 - 4.7 Acres

Lot 22 Prairie View Ln SW
Cedar Rapids, Iowa 52404

Property Highlights

- Located near Cedar Rapids Airport
- Interstate 380 and Highway 30

Property Description

Prairie View Office Park Commercial Lot For Sale.

OFFERING SUMMARY

Sale Price	\$975,000
Lot Size	4.7 Acres

DEMOGRAPHICS

Stats	Population	Avg. HH Income
1 Mile	241	\$80,709
5 Miles	25,612	\$54,954
10 Miles	180,255	\$64,573

For more information

Jeremy Tipton, CCIM

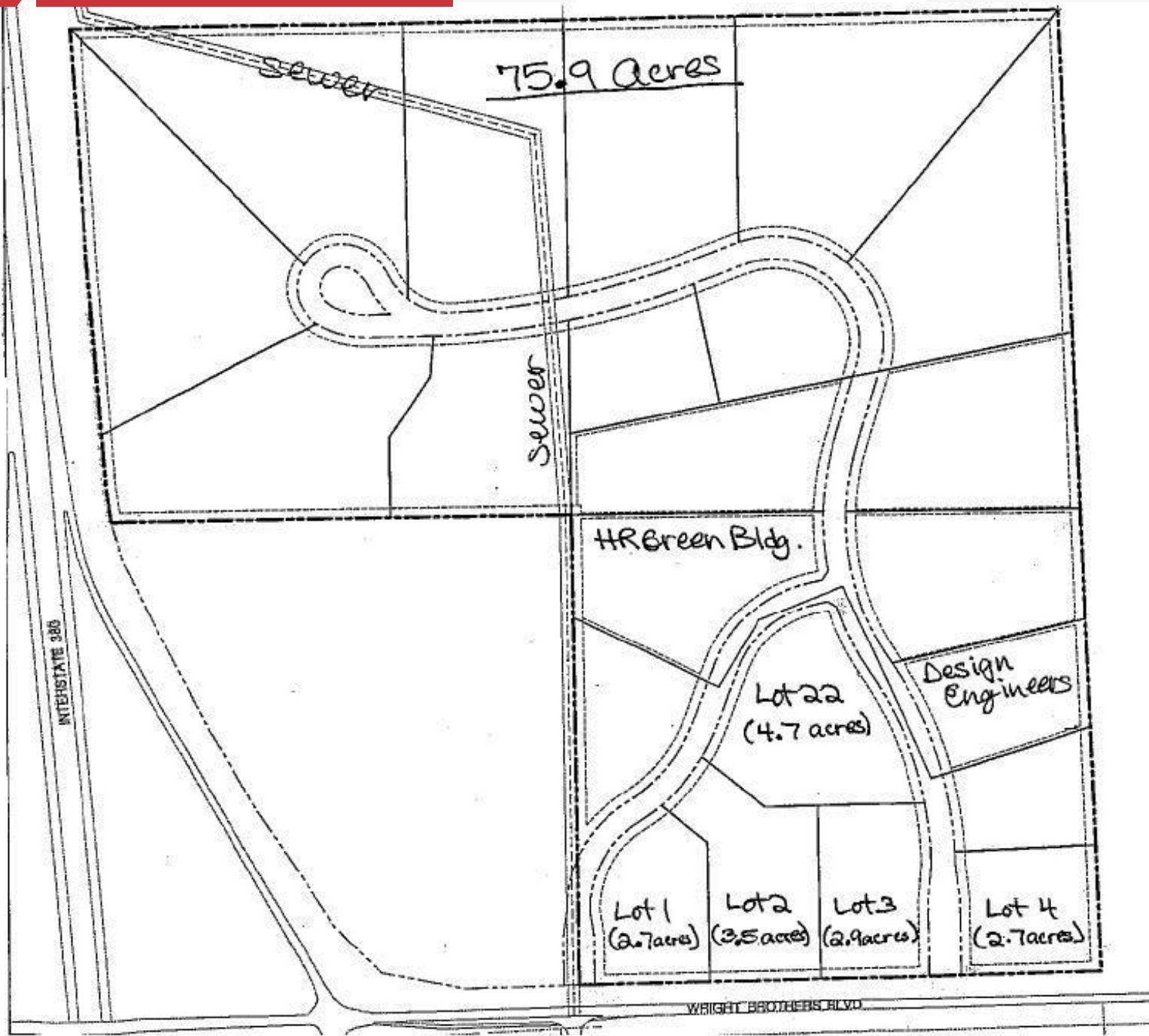
O: 319 378 6891

jtipton@iowarealty.com

For Sale

Land - Lot 22

4.7 Acres | \$207,447 / AC



For Sale

Land - Lot 22

4.7 Acres | \$207,447 / AC



Map data ©2021

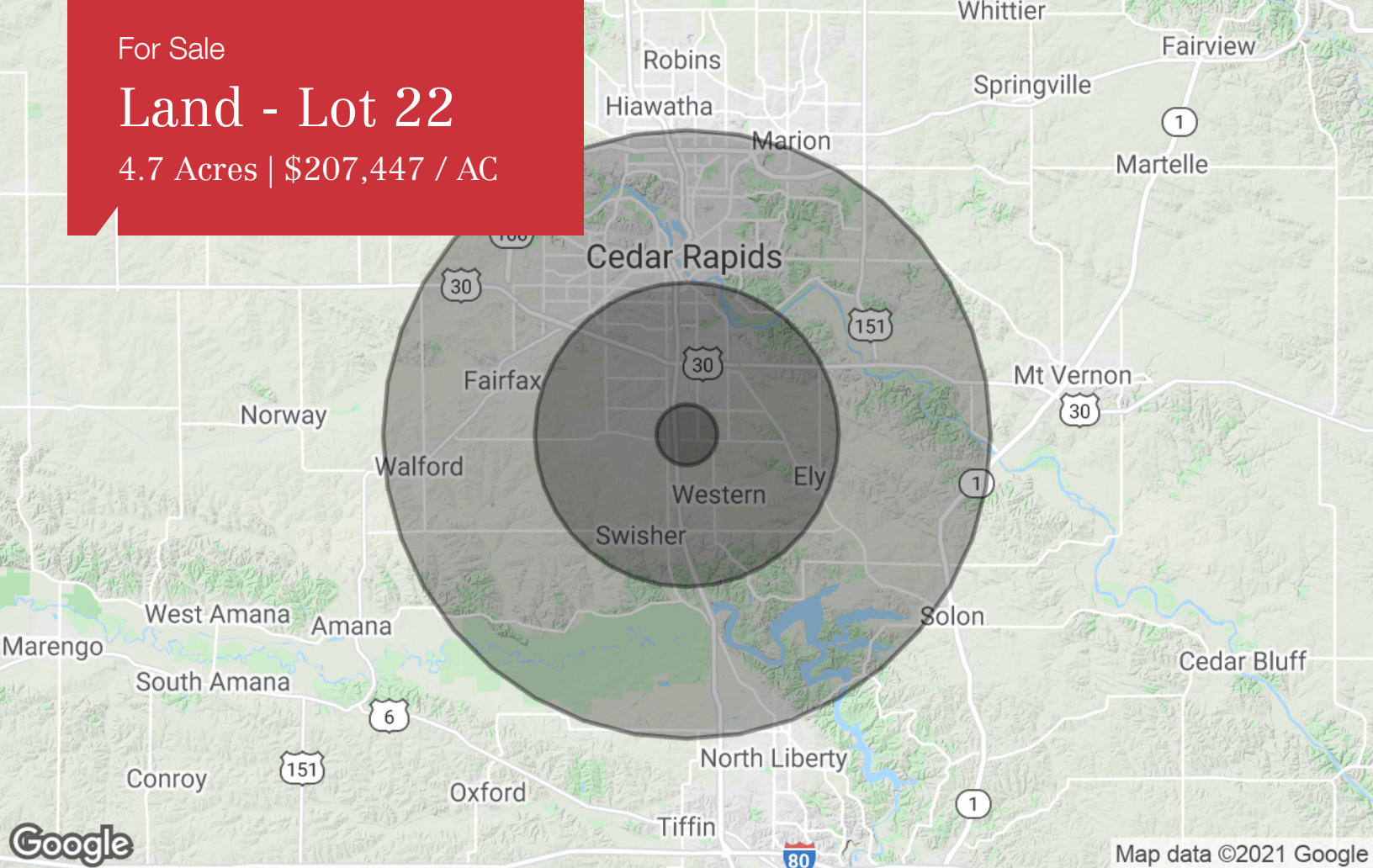


Map data ©2021

For Sale

Land - Lot 22

4.7 Acres | \$207,447 / AC



Population

	1 Mile	5 Miles	10 Miles
TOTAL POPULATION	241	25,612	180,255
MEDIAN AGE	37.1	31.1	36.2
MEDIAN AGE (MALE)	36.9	30.4	34.8
MEDIAN AGE (FEMALE)	37.5	31.4	37.4

Households & Income

	1 Mile	5 Miles	10 Miles
TOTAL HOUSEHOLDS	91	10,487	77,274
# OF PERSONS PER HH	2.6	2.4	2.3
AVERAGE HH INCOME	\$80,709	\$54,954	\$64,573
AVERAGE HOUSE VALUE	\$157,351	\$129,332	\$152,319

Race

	1 Mile	5 Miles	10 Miles
% WHITE	99.2%	91.1%	91.7%
% BLACK	0.0%	6.2%	5.1%
% ASIAN	0.4%	1.2%	1.7%
% HAWAIIAN	0.0%	0.0%	0.1%
% INDIAN	0.0%	0.4%	0.3%
% OTHER	0.4%	1.0%	1.1%

Ethnicity

	1 Mile	5 Miles	10 Miles
% HISPANIC	0.8%	2.7%	2.7%

* Demographic data derived from 2010 US Census