

For Sale

Land - Lot 2

3.5 Acres

Prairie View Commercial Lot 2 - 3.5 Acres

Lot 2 Earhart Ln SW
Cedar Rapids, Iowa 52404

Property Highlights

- Across from the New Pilot Truck Stop on Earhart Lane
- Located near Cedar Rapids Airport
- Interstate 380 and Highway 30

Property Description

Prairie View Office Park Commercial Lot For Sale. Lot is situated at the office park entrance of Earhart Lane and Wright Brothers Blvd.

OFFERING SUMMARY

Sale Price	\$914,760
Lot Size	3.5 Acres

DEMOGRAPHICS

Stats	Population	Avg. HH Income
1 Mile	216	\$86,751
5 Miles	24,045	\$55,629
10 Miles	180,810	\$64,122

For more information

Jeremy Tipton, CCIM

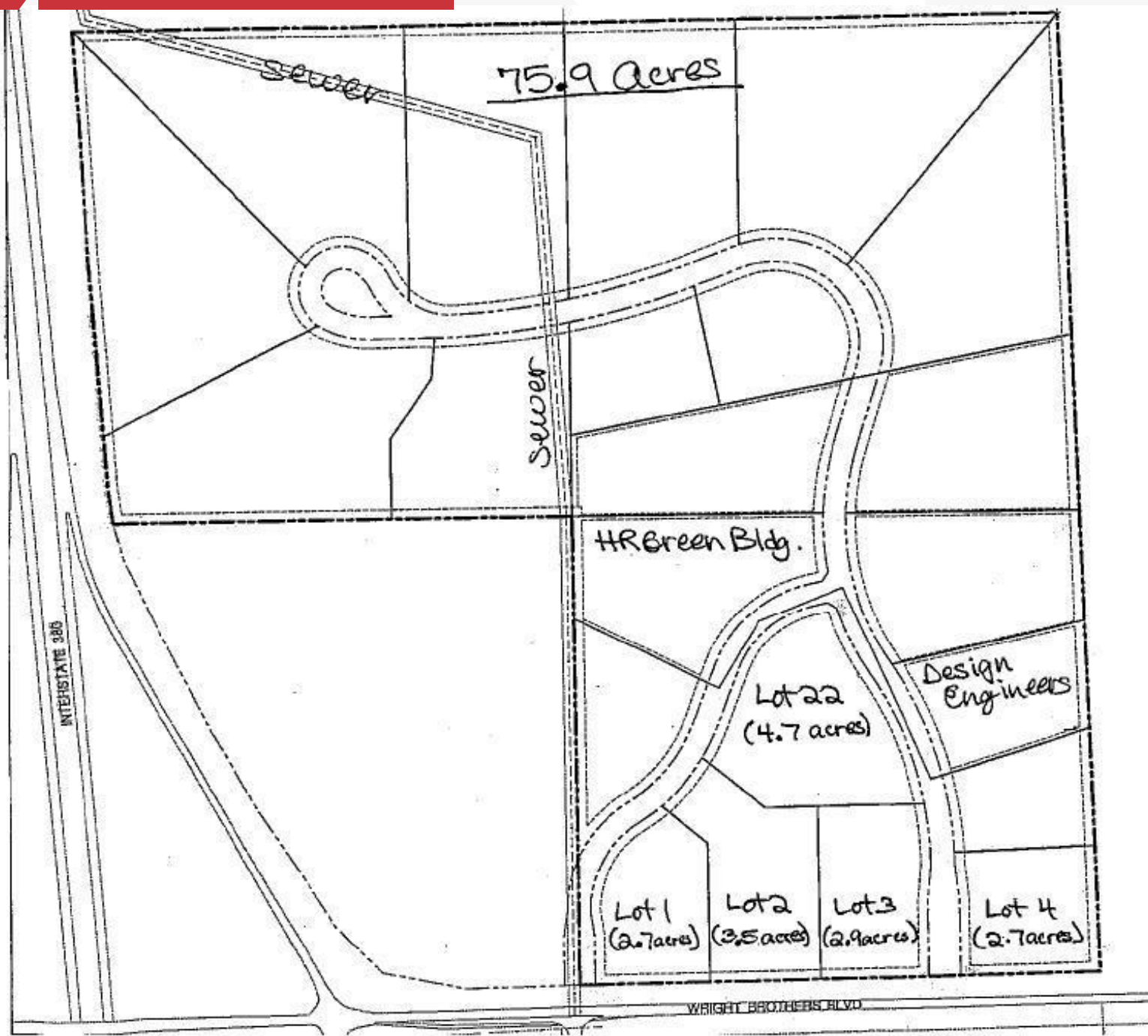
O: 319 378 6891

jtipton@iowarealty.com

For Sale

Land - Lot 2

3.5 Acres | \$261,360 / AC



For Sale

Land - Lot 2

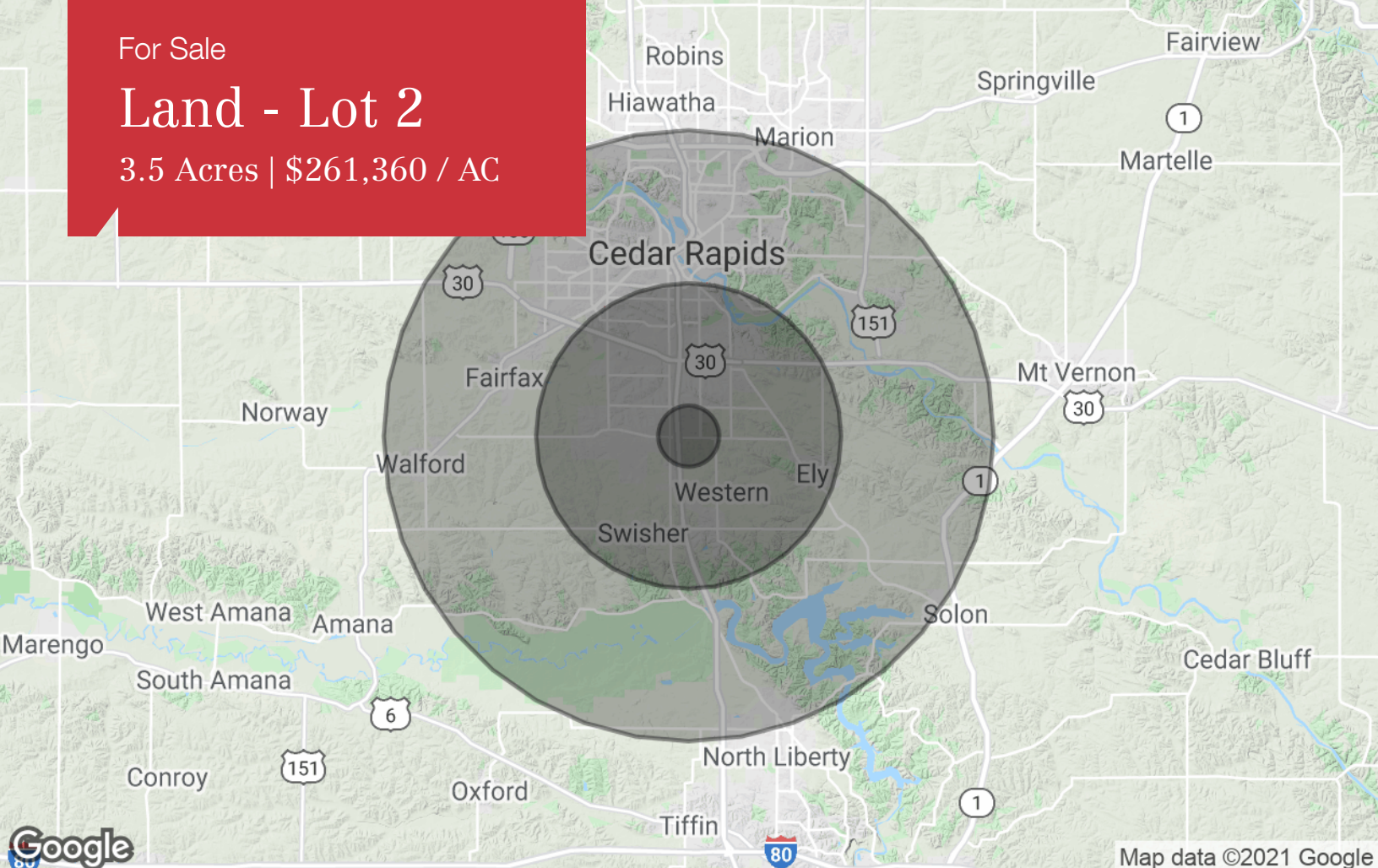
3.5 Acres | \$261,360 / AC



For Sale

Land - Lot 2

3.5 Acres | \$261,360 / AC



Population

	1 Mile	5 Miles	10 Miles
TOTAL POPULATION	216	24,045	180,810
MEDIAN AGE	39.2	31.1	36.2
MEDIAN AGE (MALE)	38.8	30.8	34.7
MEDIAN AGE (FEMALE)	39.6	31.1	37.4

Households & Income

	1 Mile	5 Miles	10 Miles
TOTAL HOUSEHOLDS	80	9,806	77,422
# OF PERSONS PER HH	2.7	2.5	2.3
AVERAGE HH INCOME	\$86,751	\$55,629	\$64,122
AVERAGE HOUSE VALUE		\$130,460	\$151,208

Race

	1 Mile	5 Miles	10 Miles
% WHITE	99.0%	91.1%	91.7%
% BLACK	0.0%	6.4%	5.1%
% ASIAN	0.5%	1.3%	1.7%
% HAWAIIAN	0.0%	0.0%	0.1%
% INDIAN	0.0%	0.3%	0.3%
% OTHER	0.5%	0.8%	1.1%

Ethnicity

	1 Mile	5 Miles	10 Miles
% HISPANIC	0.5%	2.5%	2.7%

* Demographic data derived from 2010 US Census