

**.5 +/- ACRES**

FOR SALE / GROUND LEASE / BUILD TO SUIT



**PINETREE PLAZA OUTLOT**

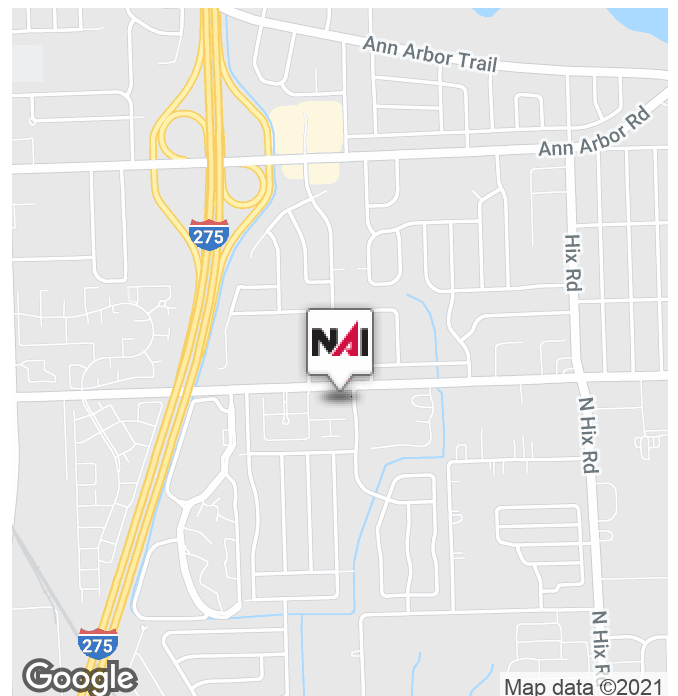


**39409-39529 Joy Rd**

Canton, Michigan 48187

### Property Highlights

- .5 +/- Acres For Sale/Ground Lease/Build to Suit
- Join Family Dollar, China Gold Chinese Restaurant, EN-Joy Liquor Store, Eastern Market of Canton and Many More!
- Zoning: B3
- Multiple Access
- Excellent Main Road Visibility



**NAI Farbman**

Commercial Real Estate Services, Worldwide.

[www.naifarbman.com](http://www.naifarbman.com)

**Nanci Tarpley**

Investment, Sales and Leasing Associate | 248.351.6323  
[tarpley@farbman.com](mailto:tarpley@farbman.com)

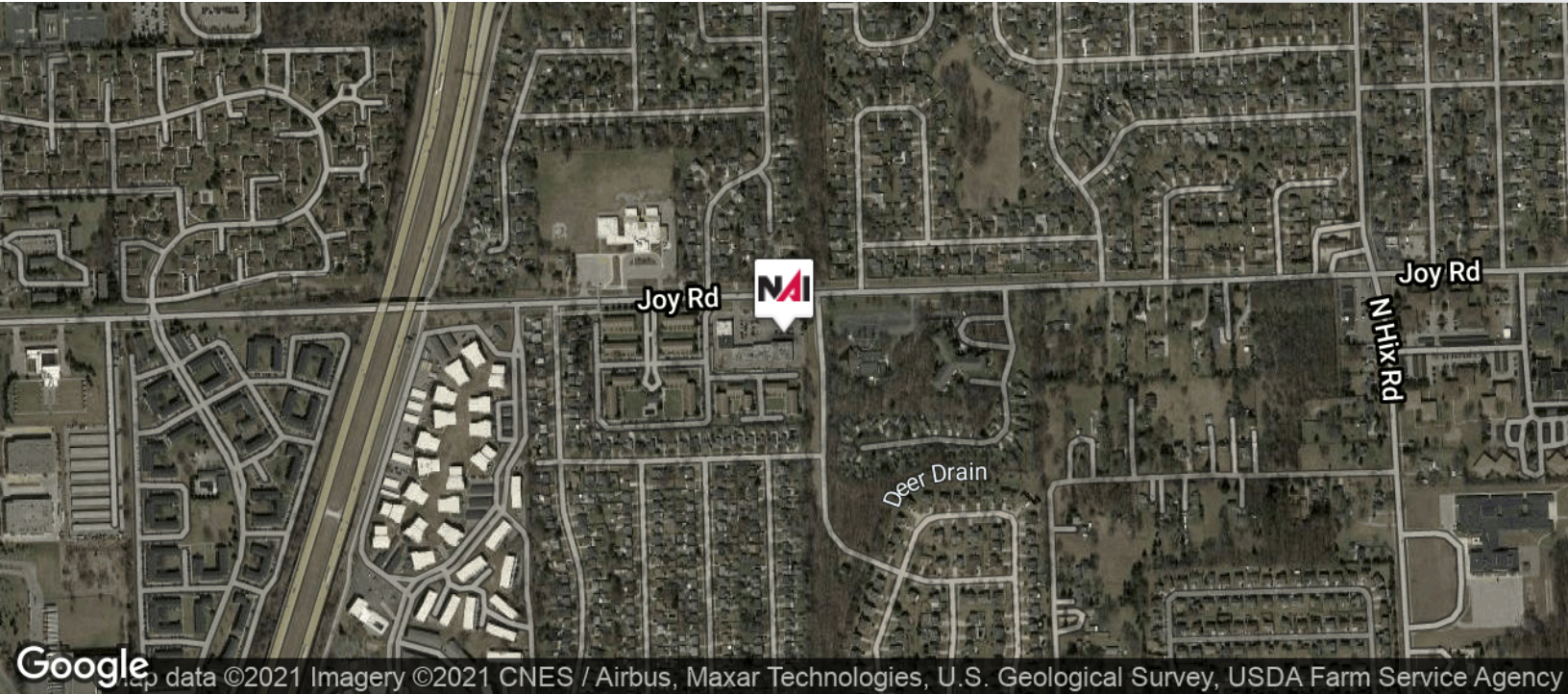
NO WARRANTY, EXPRESS OR IMPLIED, IS MADE AS TO THE ACCURACY OF THE INFORMATION CONTAINED HEREIN. THIS INFORMATION IS SUBMITTED SUBJECT TO ERRORS, OMISSIONS, CHANGE OF PRICE, RENTAL OR OTHER CONDITIONS, WITHDRAWAL WITHOUT NOTICE, AND IS SUBJECT TO ANY SPECIAL LISTING CONDITIONS IMPOSED BY OUR PRINCIPALS. COOPERATING BROKERS, BUYERS, TENANTS AND OTHER PARTIES WHO RECEIVE THIS DOCUMENT SHOULD NOT RELY ON IT, BUT SHOULD USE IT AS A STARTING POINT OF ANALYSIS, AND SHOULD INDEPENDENTLY CONFIRM THE ACCURACY OF THE INFORMATION CONTAINED HEREIN THROUGH A DUE DILIGENCE REVIEW OF THE BOOKS, RECORDS, FILES AND DOCUMENTS THAT CONSTITUTE RELIABLE SOURCES OF THE INFORMATION DESCRIBED HEREIN. LOGOS ARE FOR IDENTIFICATION PURPOSES ONLY AND MAY BE TRADEMARKS OF THEIR RESPECTIVE COMPANIES. NAI CAPITAL, INC. CA BRE LIC. #01990696.

**.5 +/- ACRES**

FOR SALE / GROUND LEASE / BUILD TO SUIT



# PINETREE PLAZA OUTLOT



Commercial Real Estate Services, Worldwide.  
www.naifarbman.com

**Nanci Tarpley**

Investment, Sales and Leasing Associate | 248.351.6323  
tarpley@farbman.com

NO WARRANTY, EXPRESS OR IMPLIED, IS MADE AS TO THE ACCURACY OF THE INFORMATION CONTAINED HEREIN. THIS INFORMATION IS SUBMITTED SUBJECT TO ERRORS, OMISSIONS, CHANGE OF PRICE, RENTAL OR OTHER CONDITIONS, WITHDRAWAL WITHOUT NOTICE, AND IS SUBJECT TO ANY SPECIAL LISTING CONDITIONS IMPOSED BY OUR PRINCIPALS, COOPERATING BROKERS, BUYERS, TENANTS AND OTHER PARTIES WHO RECEIVE THIS DOCUMENT SHOULD NOT RELY ON IT, BUT SHOULD USE IT AS A STARTING POINT OF ANALYSIS, AND SHOULD INDEPENDENTLY CONFIRM THE ACCURACY OF THE INFORMATION CONTAINED HEREIN THROUGH A DUE DILIGENCE REVIEW OF THE BOOKS, RECORDS, FILES AND DOCUMENTS THAT CONSTITUTE RELIABLE SOURCES OF THE INFORMATION DESCRIBED HEREIN. LOGOS ARE FOR IDENTIFICATION PURPOSES ONLY AND MAY BE TRADEMARKS OF THEIR RESPECTIVE COMPANIES. NAI CAPITAL, INC. CA BRE LIC. #01990696.

**.5 +/- ACRES**

FOR SALE / GROUND LEASE / BUILD TO SUIT



# PINETREE PLAZA OUTLOT



Outlot  
Available  
.5 +/- Acres

Not to Scale

Map data ©2021 Imagery ©2021, Maxar Technologies, U.S. Geological Survey



Commercial Real Estate Services, Worldwide.  
www.naifarberman.com

**Nanci Tarpley**

Investment, Sales and Leasing Associate | 248.351.6323  
tarpley@farberman.com

NO WARRANTY, EXPRESS OR IMPLIED, IS MADE AS TO THE ACCURACY OF THE INFORMATION CONTAINED HEREIN. THIS INFORMATION IS SUBMITTED SUBJECT TO ERRORS, OMISSIONS, CHANGE OF PRICE, RENTAL OR OTHER CONDITIONS, WITHDRAWAL WITHOUT NOTICE, AND IS SUBJECT TO ANY SPECIAL LISTING CONDITIONS IMPOSED BY OUR PRINCIPALS. COOPERATING BROKERS, BUYERS, TENANTS AND OTHER PARTIES WHO RECEIVE THIS DOCUMENT SHOULD NOT RELY ON IT, BUT SHOULD USE IT AS A STARTING POINT OF ANALYSIS, AND SHOULD INDEPENDENTLY CONFIRM THE ACCURACY OF THE INFORMATION CONTAINED HEREIN THROUGH A DUE DILIGENCE REVIEW OF THE BOOKS, RECORDS, FILES AND DOCUMENTS THAT CONSTITUTE RELIABLE SOURCES OF THE INFORMATION DESCRIBED HEREIN. LOGOS ARE FOR IDENTIFICATION PURPOSES ONLY AND MAY BE TRADEMARKS OF THEIR RESPECTIVE COMPANIES. NAI CAPITAL, INC. CA BRE LIC. #01990696.

**.5 +/- ACRES**

FOR SALE / GROUND LEASE / BUILD TO SUIT



**PINETREE PLAZA OUTLOT**



TRAFFIC COUNT	
JOY RD & I-275	61,500
JOY RD & HOLLY DR	11,538

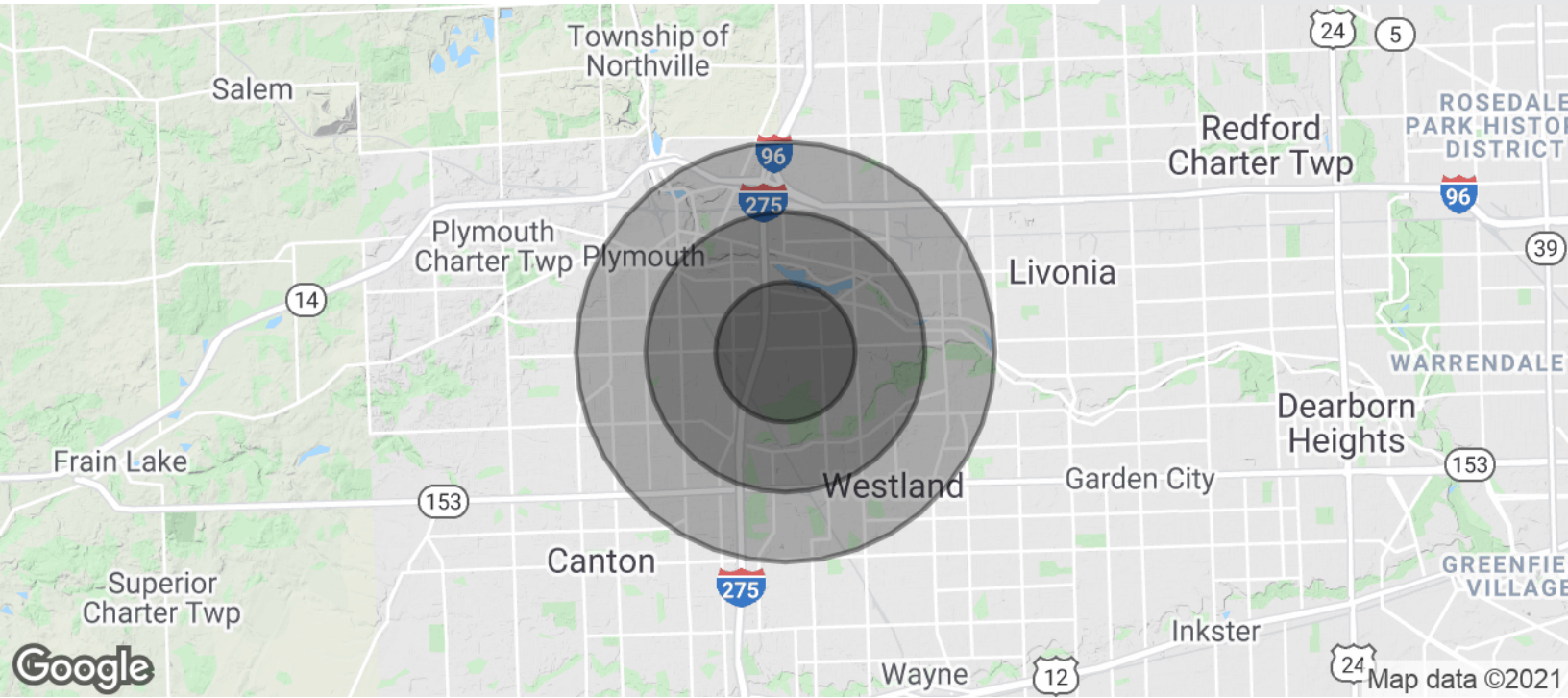
Map data ©2021 Google Imagery ©2021 , CNES / Airbus, Landsat / Copernicus, Maxar Technologies, U.S. Geological Survey, USDA Farm Service Agency

# .5 +/- ACRES

## FOR SALE / GROUND LEASE / BUILD TO SUIT



# PINETREE PLAZA OUTLOT



POPULATION	1 MILE	2 MILES	3 MILES
Total Population	12,483	35,018	80,814
Average age	36.8	38.5	39.0
Average age (Male)	35.0	36.6	37.4
Average age (Female)	37.2	39.3	39.9
HOUSEHOLDS & INCOME	1 MILE	2 MILES	3 MILES
Total households	4,964	14,652	34,545
# of persons per HH	2.5	2.4	2.3
Average HH income	\$67,429	\$67,300	\$66,693
Average house value	\$186,679	\$191,392	\$191,431
ETHNICITY (%)	1 MILE	2 MILES	3 MILES
Hispanic	4.2%	3.0%	2.9%
RACE	1 MILE	2 MILES	3 MILES



Commercial Real Estate Services, Worldwide.  
www.naifarbman.com

**Nanci Tarpley**  
Investment, Sales and Leasing Associate | 248.351.6323  
tarpley@farbman.com

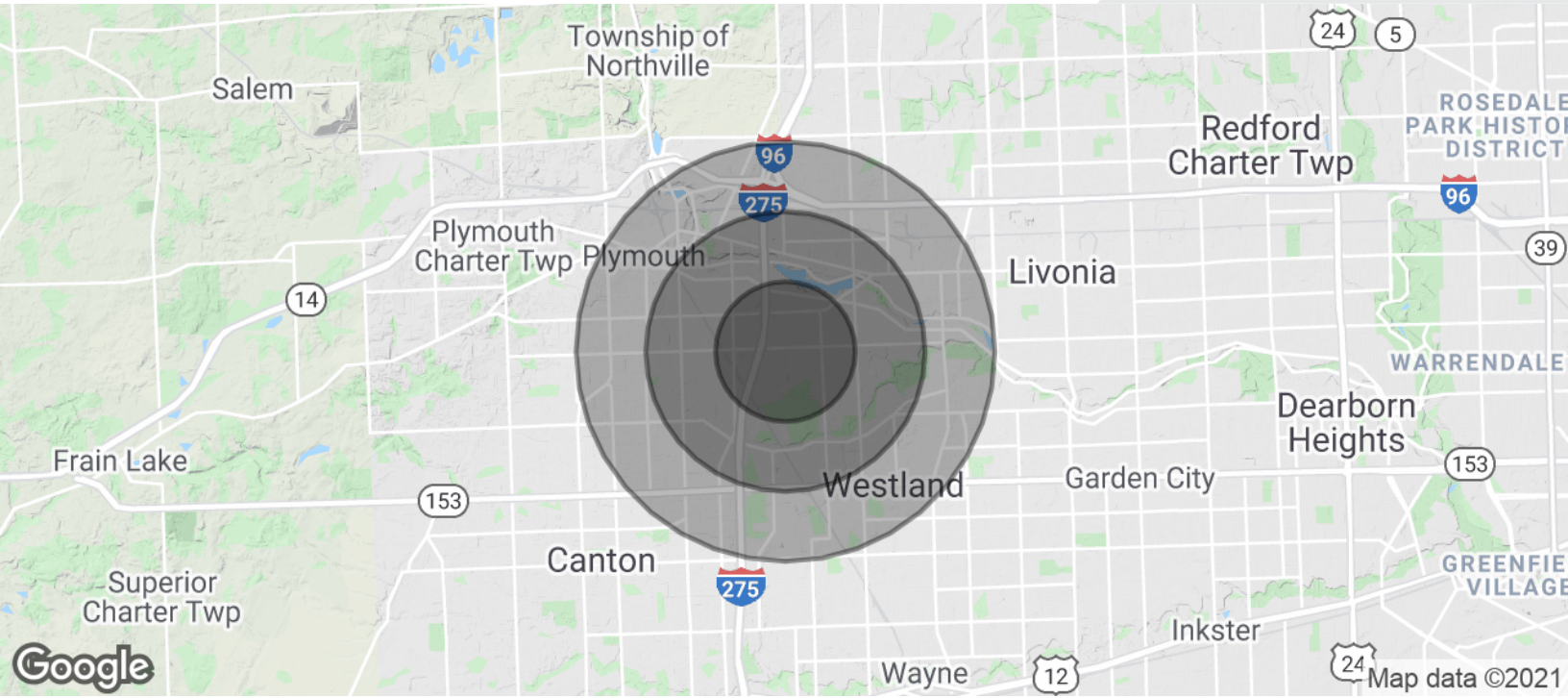
NO WARRANTY, EXPRESS OR IMPLIED, IS MADE AS TO THE ACCURACY OF THE INFORMATION CONTAINED HEREIN. THIS INFORMATION IS SUBMITTED SUBJECT TO ERRORS, OMISSIONS, CHANGE OF PRICE, RENTAL OR OTHER CONDITIONS, WITHDRAWAL WITHOUT NOTICE, AND IS SUBJECT TO ANY SPECIAL LISTING CONDITIONS IMPOSED BY OUR PRINCIPALS. COOPERATING BROKERS, BUYERS, TENANTS AND OTHER PARTIES WHO RECEIVE THIS DOCUMENT SHOULD NOT RELY ON IT, BUT SHOULD USE IT AS A STARTING POINT OF ANALYSIS, AND SHOULD INDEPENDENTLY CONFIRM THE ACCURACY OF THE INFORMATION CONTAINED HEREIN THROUGH A DUE DILIGENCE REVIEW OF THE BOOKS, RECORDS, FILES AND DOCUMENTS THAT CONSTITUTE RELIABLE SOURCES OF THE INFORMATION DESCRIBED HEREIN. LOGOS ARE FOR IDENTIFICATION PURPOSES ONLY AND MAY BE TRADEMARKS OF THEIR RESPECTIVE COMPANIES. NAI CAPITAL, INC. CA BRE LIC. #01990696.

# .5 +/- ACRES

FOR SALE / GROUND LEASE / BUILD TO SUIT



## PINETREE PLAZA OUTLOT



Total Population - White	9,379	27,228	64,718
Total Population - Black	1,928	4,600	9,328
Total Population - Asian	857	2,253	4,932
Total Population - Hawaiian	0	0	0
Total Population - American Indian	2	21	86
Total Population - Other	9	54	196

\* Demographic data derived from 2010 US Census



Commercial Real Estate Services, Worldwide.

www.naifarbman.com

### Nanci Tarpley

Investment, Sales and Leasing Associate | 248.351.6323

tarpley@farbman.com

NO WARRANTY, EXPRESS OR IMPLIED, IS MADE AS TO THE ACCURACY OF THE INFORMATION CONTAINED HEREIN. THIS INFORMATION IS SUBMITTED SUBJECT TO ERRORS, OMISSIONS, CHANGE OF PRICE, RENTAL OR OTHER CONDITIONS, WITHDRAWAL WITHOUT NOTICE, AND IS SUBJECT TO ANY SPECIAL LISTING CONDITIONS IMPOSED BY OUR PRINCIPALS, COOPERATING BROKERS, BUYERS, TENANTS AND OTHER PARTIES WHO RECEIVE THIS DOCUMENT SHOULD NOT RELY ON IT, BUT SHOULD USE IT AS A STARTING POINT OF ANALYSIS, AND SHOULD INDEPENDENTLY CONFIRM THE ACCURACY OF THE INFORMATION CONTAINED HEREIN THROUGH A DUE DILIGENCE REVIEW OF THE BOOKS, RECORDS, FILES AND DOCUMENTS THAT CONSTITUTE RELIABLE SOURCES OF THE INFORMATION DESCRIBED HEREIN. LOGOS ARE FOR IDENTIFICATION PURPOSES ONLY AND MAY BE TRADEMARKS OF THEIR RESPECTIVE COMPANIES. NAI CAPITAL, INC. CA BRE LIC. #01990996.