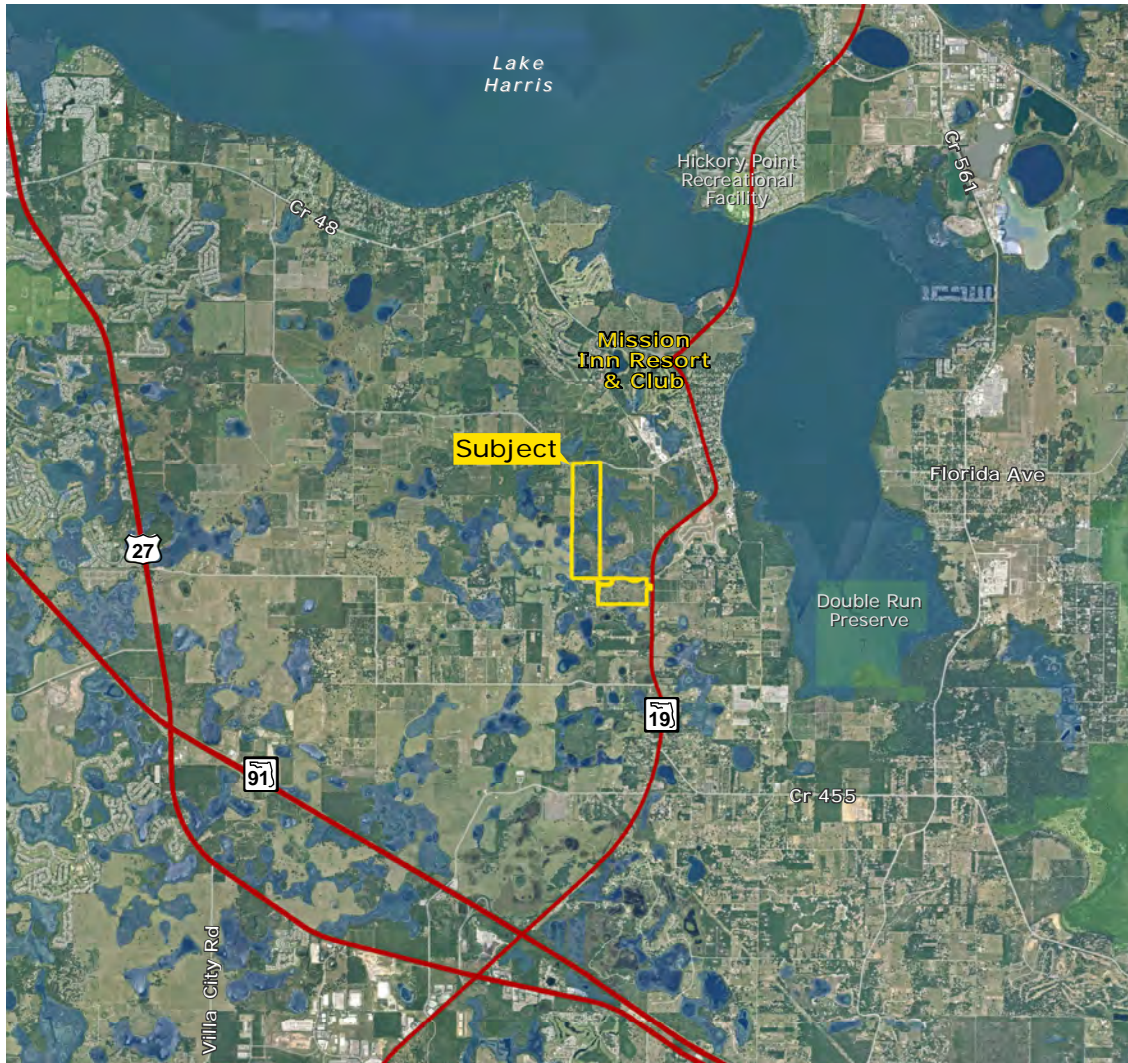


# MISSION RISE & THE RESERVE COMMERCIAL LAND

EXCLUSIVE LISTING | HOWEY-IN-THE-HILLS, LAKE COUNTY, FLORIDA



**LOCATION** The site is approximately 30 miles northwest of Orlando in the town of Howey-In-The-Hills which is located on the western shoreline of Little Lake Harris and 5 miles north of Florida's Turnpike.

**PROPERTY DESCRIPTION** Planned as "Mission Rise", a master planned residential community zoned for development of up to 400 single family units located off U.S. Highway 19 and Number Two Road.

The commercial land is approximately 28 acres and a component of the "The Reserve at Howey-In-The-Hills" master planned community and located directly east of "Mission Rise" off of U.S. Highway 19, entitled for up to 300,000 square feet of Retail/Office commercial.

The property is:

- 1 south of the Mission Inn Golf Resort
- 5 miles north of Florida's Turnpike
- 9 miles east of the City of Leesburg
- 11 miles north of the City of Clermont
- 30 mile northwest of downtown Orlando

**MUNICIPALITY** City of Howey-In-The-Hills

**ZONING** Planned Unit Development (400 single family residential units and 300,000 SF retail/office commercial)

**ACREAGE**

Mission Rise ±237 acres (±187 usable)  
Commercial ±28 acres (±23 usable)

**ASKING PRICE** \$3,500,000

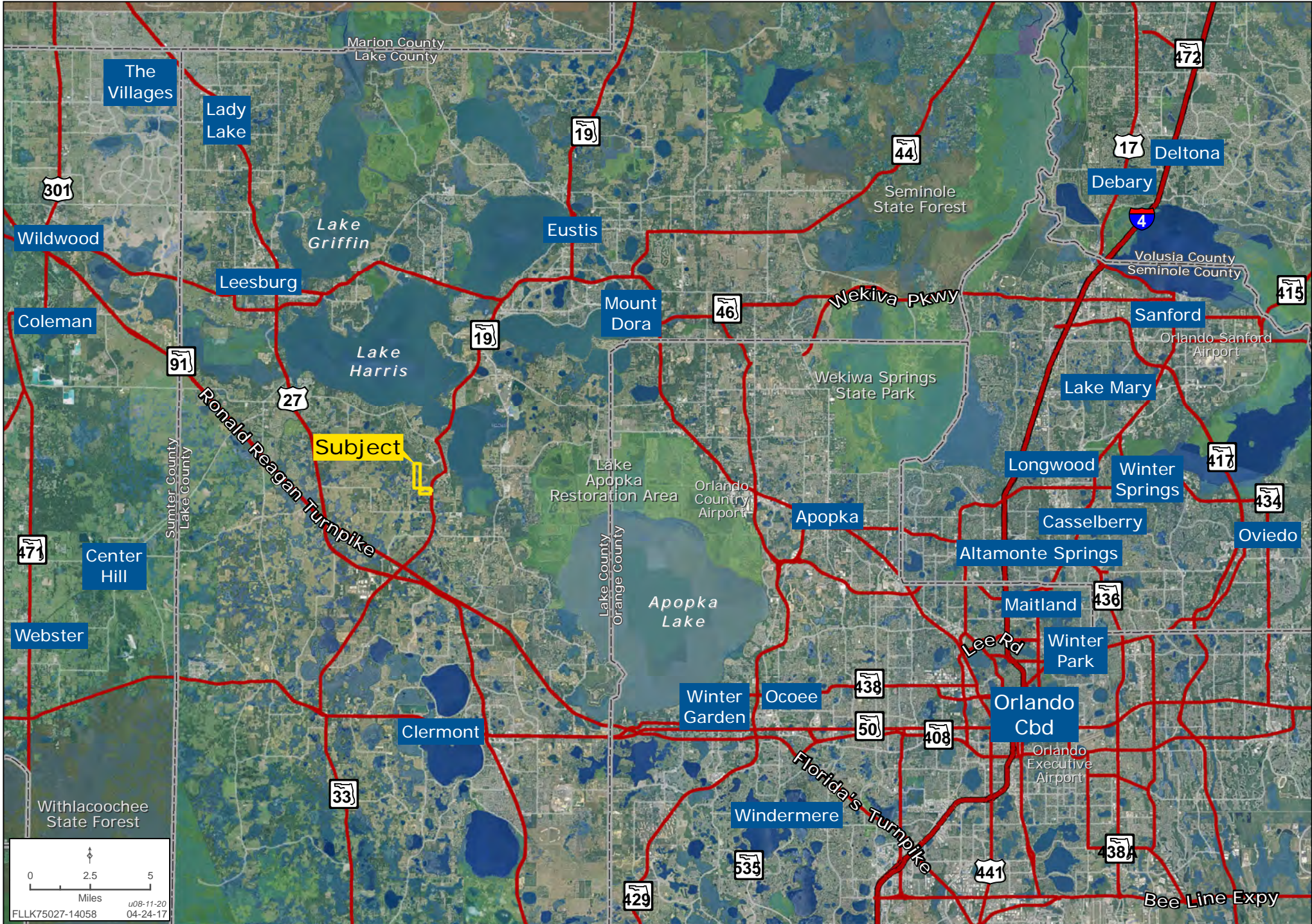
Steve Flanagan | sflanagan@landadvisors.com Mike Ripley | mripley@landadvisors.com  
399 Carolina Avenue, Suite 200, Winter Park, FL 32789 ph. 407.425.5988 | www.landadvisors.com

The information contained herein is from sources deemed reliable. We have no reason to doubt its accuracy but do not guarantee it. It is the responsibility of the person reviewing this information to independently verify it. This package is subject to change, prior sale or complete withdrawal. FLLK75027-120468 - 08.11.2020



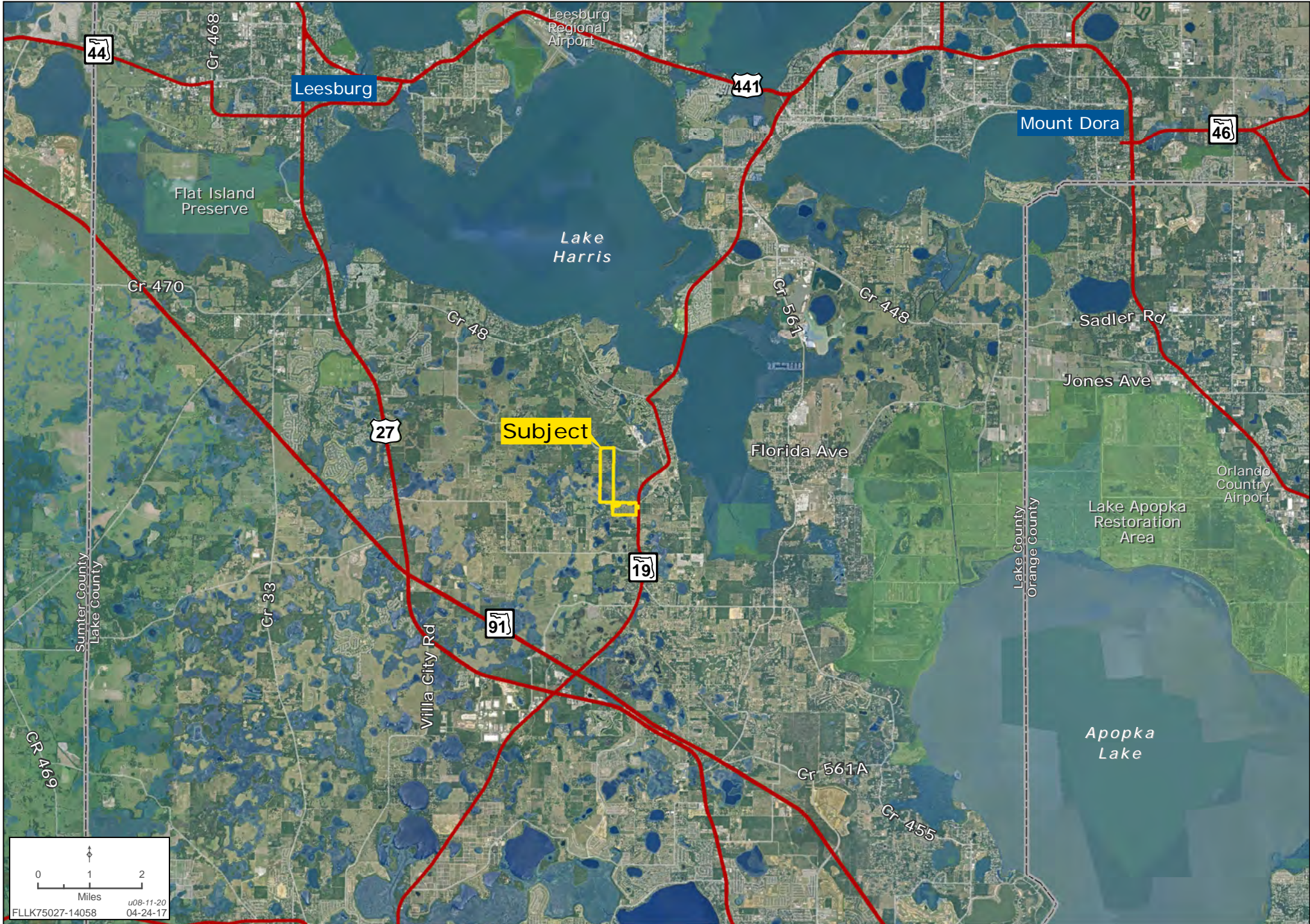
# REGIONAL MAP

Mike Ripley | 407.425.5988 | www.landadvisors.com



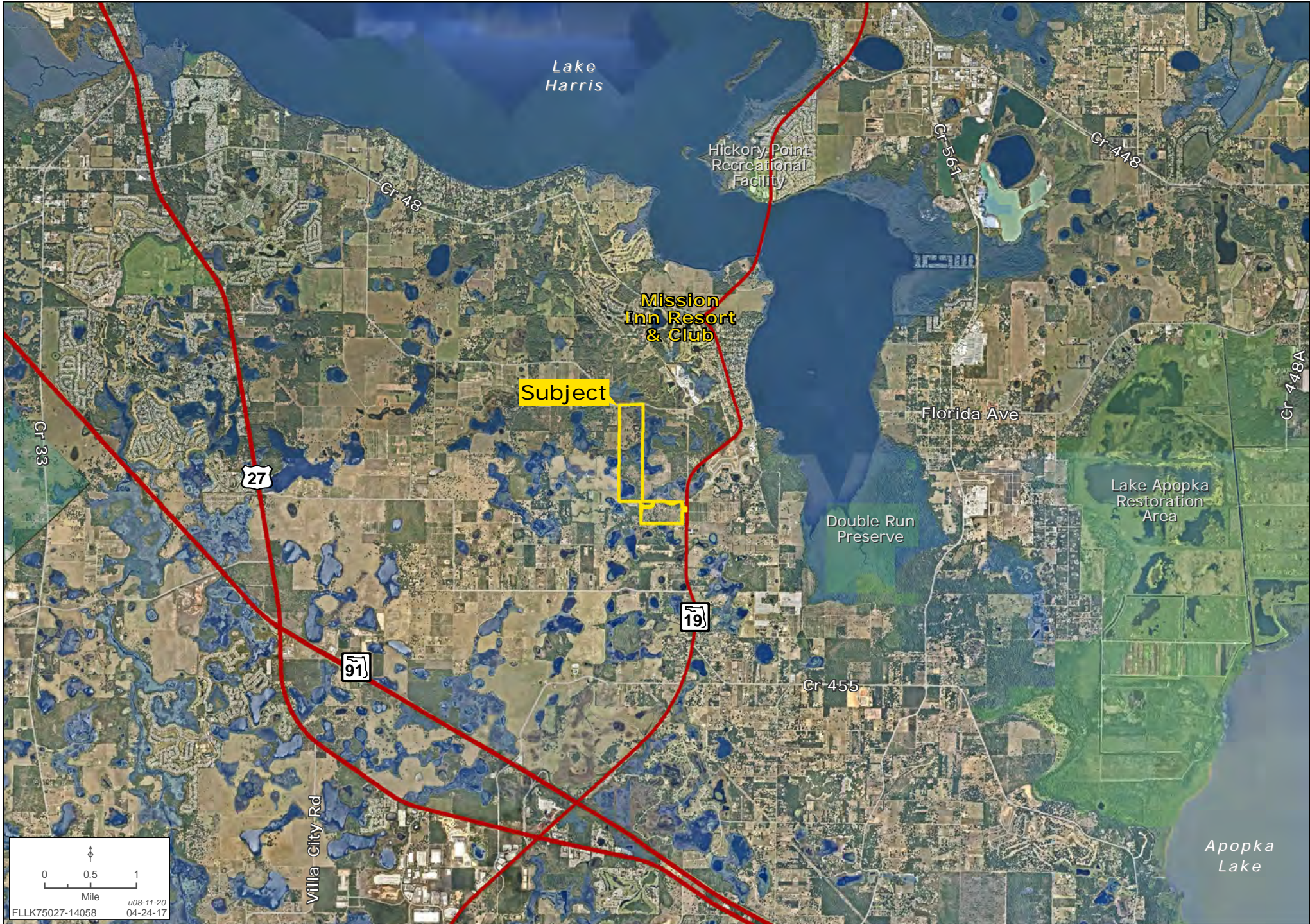
# SURROUNDING DEVELOPMENT MAP

Mike Ripley | 407.425.5988 | www.landadvisors.com



# SURROUNDING AREA MAP

Mike Ripley | 407.425.5988 | www.landadvisors.com



# PROPERTY DETAIL MAP

Mike Ripley | 407.425.5988 | www.landadvisors.com

