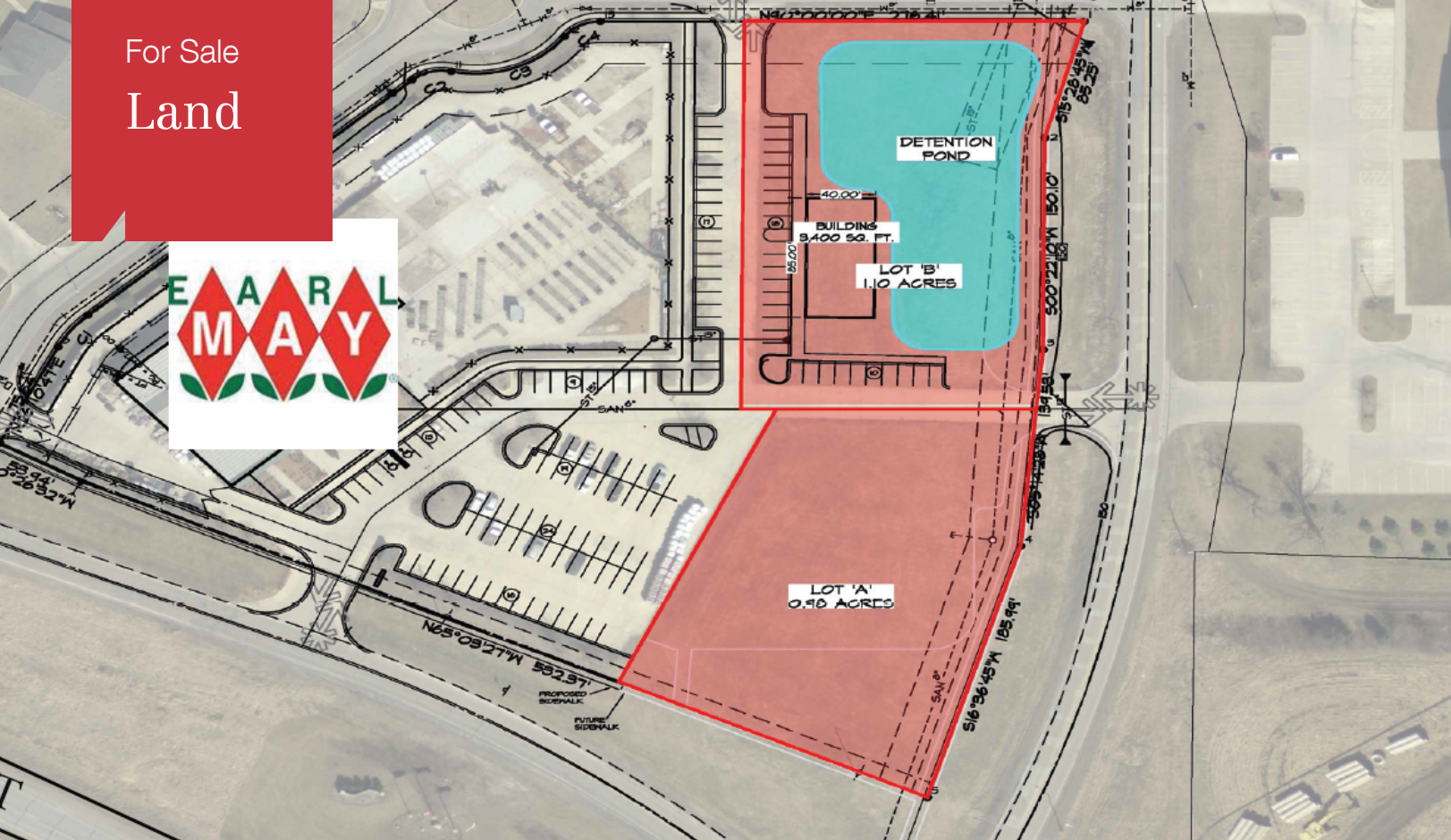


For Sale
Land



7701 Bloomfield Road

Des Moines, Iowa 50320

Property Highlights

- Lot A: .98 Acres
- \$213,444
- Lot B: .5 Acres - can accommodate 3,400 sf building footprint
- \$110,000

Property Description

Two parcels adjacent to Earl May Garden Center. Easy access to all areas of the metro via Highway 5 bypass.

OFFERING SUMMARY

Sale Price	Negotiable
Lot Size	1.48 Acres

DEMOGRAPHICS

Stats	Population	Avg. HH Income
1 Mile	1,243	\$78,546
5 Miles	74,787	\$54,563
10 Miles	286,532	\$59,997

For more information

Jason Lozano

O: 515 577 4225 | C: 515 577 4225
jlozano@iowarealtycommercial.com

Kevin Crowley, SIOR

O: 515 453 5429 | C: 515 991 7000
kcrowley@iowarealtycommercial.com

For Sale

Land

1.48 Acres



Imagery ©2021 Maxar Technologies, USDA Farm Service Agency, Warren County



Commercial Real Estate Services, Worldwide.

3501 Westown Parkway
West Des Moines, IA 50266
515 222 0000 tel
iowacommercial.com