

For Sale

Industrial Property

20,852 SF | \$620,000



1706 N. John Wayne Dr

Winterset, Iowa 50273

Property Description

Zoning: Commercial

Radiant Heat in Front Shop

Overhead Doors

1-20' x 12' Front Shop

2-24' x 16' SW Shop

1-10' x 10' NW Shop

1-20' x 12' NW Shop

Show Room With Offices on Perimeter

DEMOGRAPHICS

Stats	Population	Avg. HH Income
5 Miles	8,137	\$55,403
10 Miles	12,627	\$62,592
20 Miles	48,958	\$74,082

For more information

John Knapp, SIOR

C: 515 778 8870

jknapp@iowarealtycommercial.com

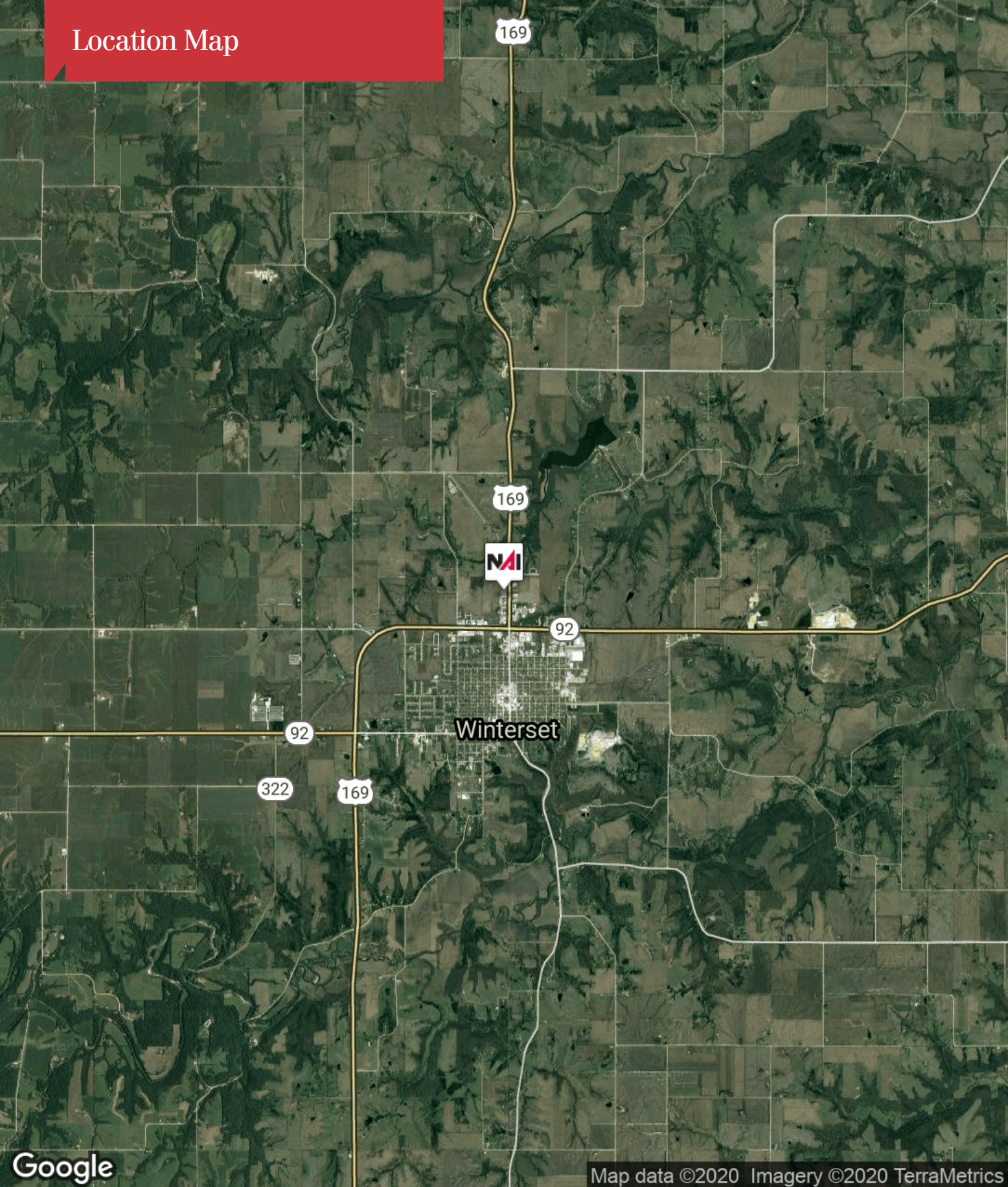
Aerial Map



Google

Map data ©2019 Google Imagery ©2019 , DigitalGlobe, USDA Farm Service Agency

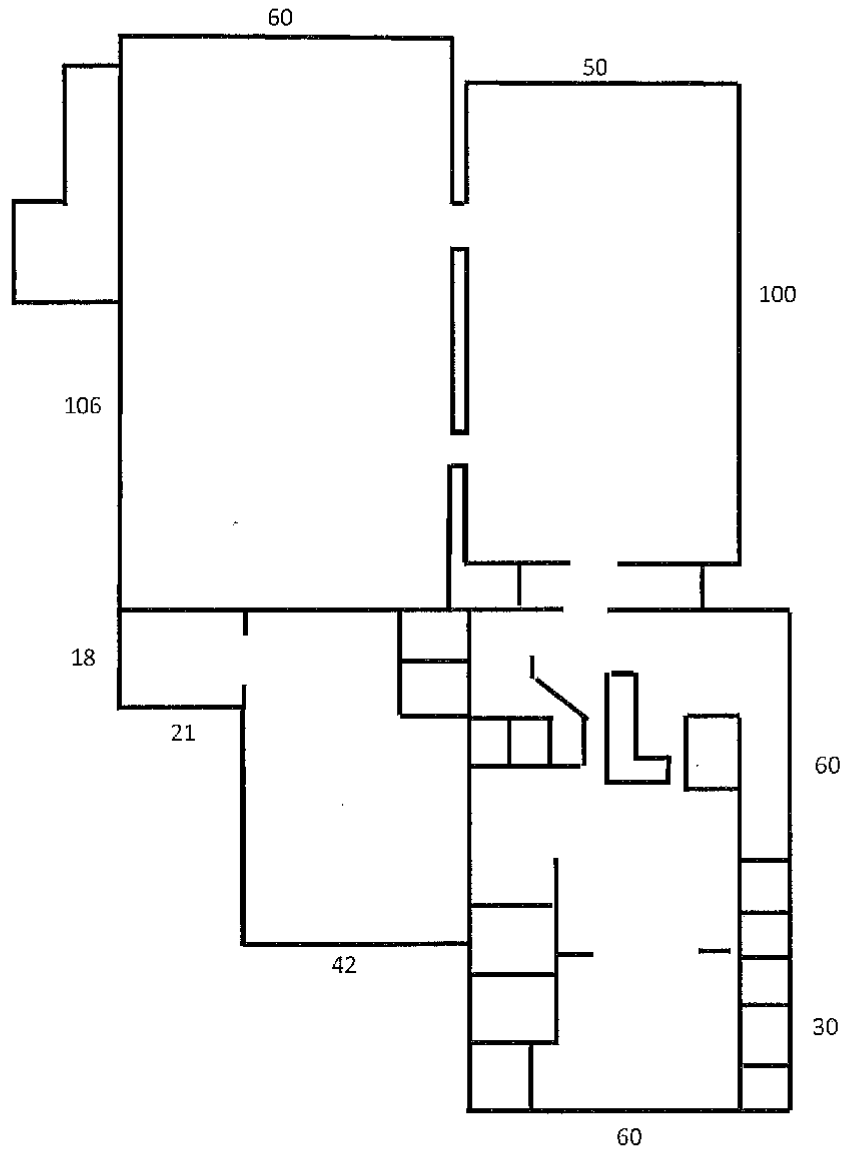
Location Map



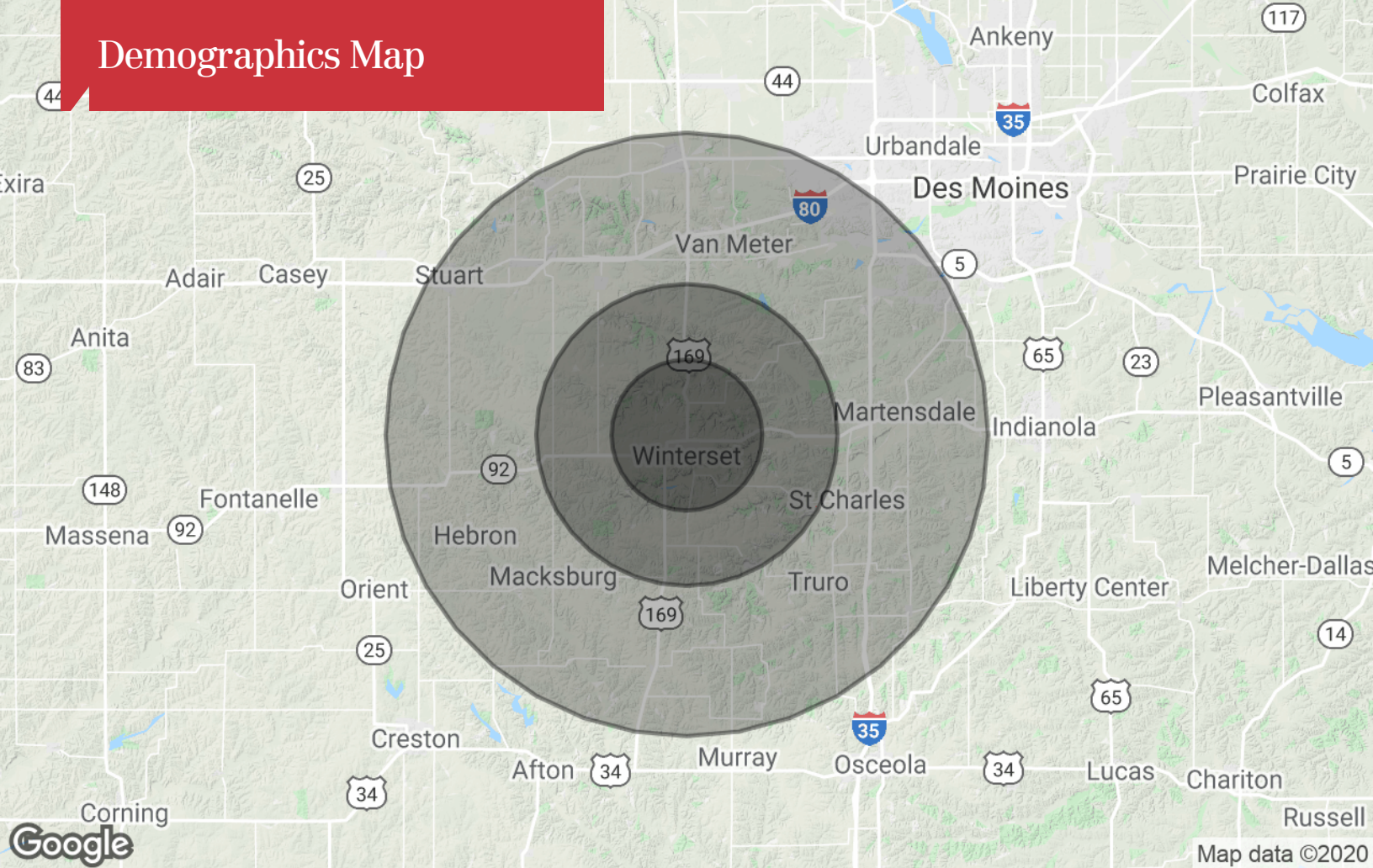
Google

Map data ©2020 Imagery ©2020 TerraMetrics

Floor Plan



Demographics Map



Population

	5 Miles	10 Miles	20 Miles
TOTAL POPULATION	8,137	12,627	48,958
MEDIAN AGE	37.0	37.9	38.2
MEDIAN AGE (MALE)	35.6	37.0	37.6
MEDIAN AGE (FEMALE)	39.9	39.8	39.1

Households & Income

	5 Miles	10 Miles	20 Miles
TOTAL HOUSEHOLDS	3,095	4,737	18,991
# OF PERSONS PER HH	2.6	2.7	2.6
AVERAGE HH INCOME	\$55,403	\$62,592	\$74,082
AVERAGE HOUSE VALUE	\$216,331	\$215,776	\$222,826

Race

	5 Miles	10 Miles	20 Miles
% WHITE	99.7%	99.6%	98.0%
% BLACK	0.1%	0.2%	0.8%
% ASIAN	0.0%	0.0%	1.0%
% HAWAIIAN	0.0%	0.0%	0.0%
% INDIAN	0.0%	0.0%	0.0%
% OTHER	0.2%	0.2%	0.2%

Ethnicity

	5 Miles	10 Miles	20 Miles
% HISPANIC	2.1%	1.5%	1.2%

* Demographic data derived from 2010 US Census