

1,121 - 5,964 SF WILLOW OFFICE CENTER



FOR LEASE



525 E Big Beaver Rd

Troy, Michigan 48083

Property Highlights

- Up to 5,964 SF Office Available
- High-End Exterior Finishes
- Quality Interior Finishes
- Located in Prestigious Troy Area, just Minutes Away from Somerset Collection Mall and Many High End Restaurants
- Office Building Includes: HVAC, Common Area Restrooms and Individual Suite Restrooms and a Fully Sprinklered System
- Abundant Parking Available

SPACES	LEASE RATE	SPACE SIZE
Suite 203	Contact Listing Agent(s)	1,550 SF
Suite 206	Contact Listing Agent(s)	1,964 SF
Suite 207	Contact Listing Agent(s)	1,121 SF
Suite 250	Contact Listing Agent(s)	4,717 SF
Suite 300	Contact Listing Agent(s)	5,964 SF

NAI Farbman

Commercial Real Estate Services, Worldwide.

www.naifarbman.com

Ron Goldstone

Executive Vice President | 248.351.4371
goldstone@farbman.com

Brandon Ben-Ezra

Leasing and Sales Associate | 947.517.6226
ben-ezra@farbman.com

NO WARRANTY, EXPRESS OR IMPLIED, IS MADE AS TO THE ACCURACY OF THE INFORMATION CONTAINED HEREIN. THIS INFORMATION IS SUBMITTED SUBJECT TO ERRORS, OMISSIONS, CHANGE OF PRICE, RENTAL OR OTHER CONDITIONS, WITHDRAWAL WITHOUT NOTICE, AND IS SUBJECT TO ANY SPECIAL LISTING CONDITIONS IMPOSED BY OUR PRINCIPALS, COOPERATING BROKERS, BUYERS, TENANTS AND OTHER PARTIES WHO RECEIVE THIS DOCUMENT SHOULD NOT RELY ON IT, BUT SHOULD USE IT AS A STARTING POINT OF ANALYSIS, AND SHOULD INDEPENDENTLY CONFIRM THE ACCURACY OF THE INFORMATION CONTAINED HEREIN THROUGH A DUE DILIGENCE REVIEW OF THE BOOKS, RECORDS, FILES AND DOCUMENTS THAT CONSTITUTE RELIABLE SOURCES OF THE INFORMATION DESCRIBED HEREIN. LOGOS ARE FOR IDENTIFICATION PURPOSES ONLY AND MAY BE TRADEMARKS OF THEIR RESPECTIVE COMPANIES. NAI CAPITAL, INC. CA BRE LIC. #01990696.

1,121 - 5,964 SF WILLOW OFFICE CENTER



FOR LEASE



NAI Farbman

Commercial Real Estate Services, Worldwide.
www.naifarbman.com

Ron Goldstone
Executive Vice President | 248.351.4371
goldstone@farbman.com

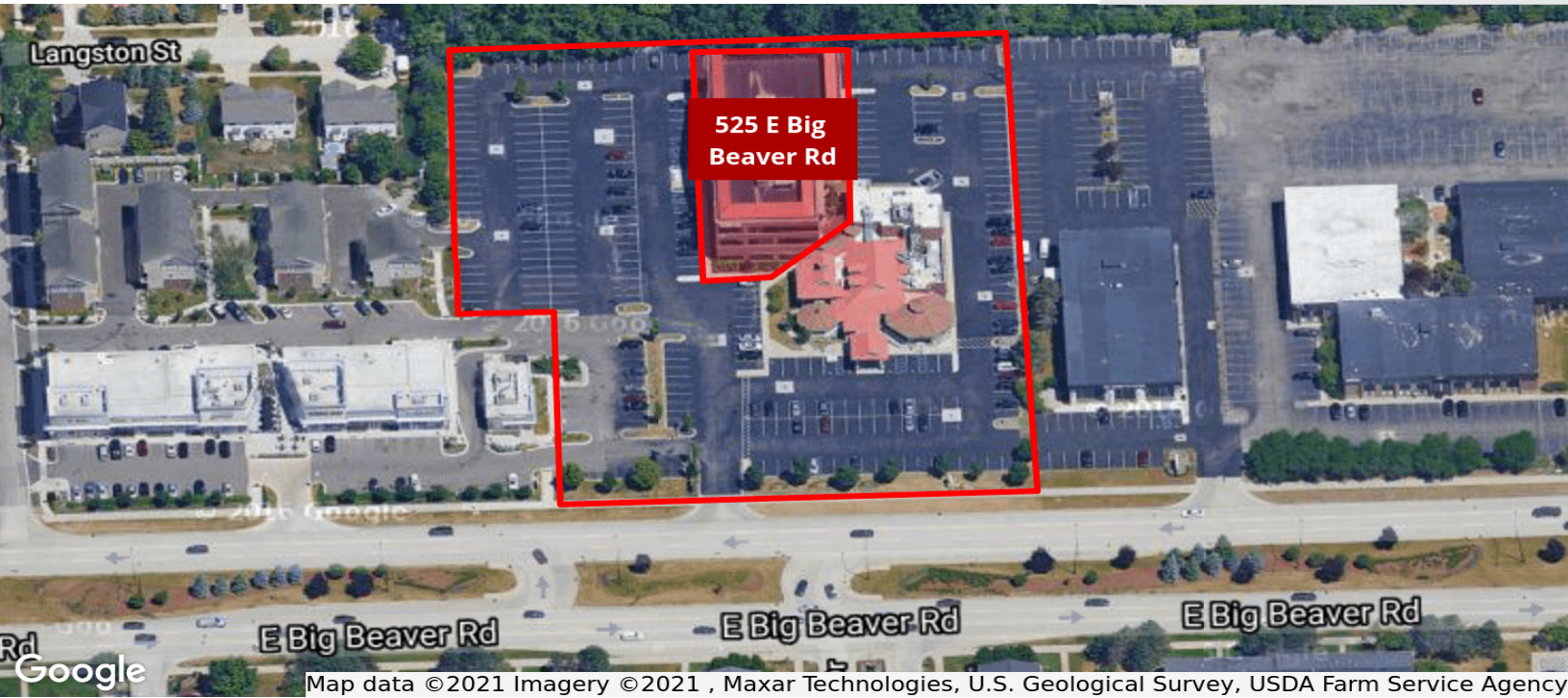
Brandon Ben-Ezra
Leasing and Sales Associate | 947.517.6226
ben-ezra@farbman.com

NO WARRANTY, EXPRESS OR IMPLIED, IS MADE AS TO THE ACCURACY OF THE INFORMATION CONTAINED HEREIN. THIS INFORMATION IS SUBMITTED SUBJECT TO ERRORS, OMISSIONS, CHANGE OF PRICE, RENTAL OR OTHER CONDITIONS, WITHDRAWAL WITHOUT NOTICE, AND IS SUBJECT TO ANY SPECIAL LISTING CONDITIONS IMPOSED BY OUR PRINCIPALS, COOPERATING BROKERS, BUYERS, TENANTS AND OTHER PARTIES WHO RECEIVE THIS DOCUMENT SHOULD NOT RELY ON IT, BUT SHOULD USE IT AS A STARTING POINT OF ANALYSIS, AND SHOULD INDEPENDENTLY CONFIRM THE ACCURACY OF THE INFORMATION CONTAINED HEREIN THROUGH A DUE DILIGENCE REVIEW OF THE BOOKS, RECORDS, FILES AND DOCUMENTS THAT CONSTITUTE RELIABLE SOURCES OF THE INFORMATION DESCRIBED HEREIN. LOGOS ARE FOR IDENTIFICATION PURPOSES ONLY AND MAY BE TRADEMARKS OF THEIR RESPECTIVE COMPANIES. NAI CAPITAL, INC. CA BRE LIC. #01990696.

1,121 - 5,964 SF WILLOW OFFICE CENTER



FOR LEASE



Map data ©2021 Imagery ©2021, Maxar Technologies, U.S. Geological Survey, USDA Farm Service Agency



Map data ©2021

NAI Farbman

Commercial Real Estate Services, Worldwide.
www.naifarbman.com

Ron Goldstone
Executive Vice President | 248.351.4371
goldstone@farbman.com

Brandon Ben-Ezra
Leasing and Sales Associate | 947.517.6226
ben-ezra@farbman.com

NO WARRANTY, EXPRESS OR IMPLIED, IS MADE AS TO THE ACCURACY OF THE INFORMATION CONTAINED HEREIN. THIS INFORMATION IS SUBMITTED SUBJECT TO ERRORS, OMISSIONS, CHANGE OF PRICE, RENTAL OR OTHER CONDITIONS, WITHDRAWAL WITHOUT NOTICE, AND IS SUBJECT TO ANY SPECIAL LISTING CONDITIONS IMPOSED BY OUR PRINCIPALS, COOPERATING BROKERS, BUYERS, TENANTS AND OTHER PARTIES WHO RECEIVE THIS DOCUMENT SHOULD NOT RELY ON IT, BUT SHOULD USE IT AS A STARTING POINT OF ANALYSIS, AND SHOULD INDEPENDENTLY CONFIRM THE ACCURACY OF THE INFORMATION CONTAINED HEREIN THROUGH A DUE DILIGENCE REVIEW OF THE BOOKS, RECORDS, FILES AND DOCUMENTS THAT CONSTITUTE RELIABLE SOURCES OF THE INFORMATION DESCRIBED HEREIN. LOGOS ARE FOR IDENTIFICATION PURPOSES ONLY AND MAY BE TRADEMARKS OF THEIR RESPECTIVE COMPANIES. NAI CAPITAL, INC. CA BRE LIC. #01990696.

1,121 - 5,964 SF WILLOW OFFICE CENTER



FOR LEASE

