

1030 Main St

SAINT HELENA, CA 94574



Property Description

Suite 206 is an excellent opportunity to occupy a historically low-vacancy building with a credit sublessor. The lease expires May 31, 2022.

Location Description

1030 Main St is centrally located and features prominent visibility along St. Helena's main road and is surrounded on either side by a variety of local businesses, including restaurants, wineries, grocers, and more! There is abundant parking in the rear and offers dedicated spaces for electric vehicle charging.

Offering Summary

| | |
|-----------------------|------------|
| Lease Rate: | Negotiable |
| Available SF: | 824 SF |
| Lot Size: | |
| Building Size: | 26,785 SF |

| Demographics | 1 Mile | 5 Miles | 10 Miles |
|--------------------------|---------------|----------------|-----------------|
| Total Households | 1,504 | 4,847 | 13,539 |
| Total Population | 3,437 | 11,876 | 32,992 |
| Average HH Income | \$106,745 | \$123,265 | \$110,511 |

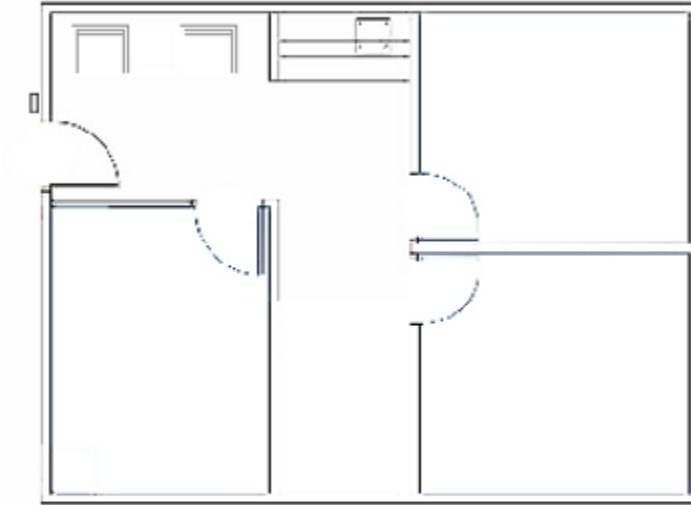


The Doug Sharpe Team
NAINORCAL.COM

Douglas Sharpe
Executive Vice President
dsharpe@nainorcal.com
408.740.7224
CalDRE #00693583

Lidia Buckovic
Transaction Manager
lbuckovic@nainorcal.com
408.740.7225
CalDRE #02064692

Additional Photos



Location Information



For More Information

Douglas Sharpe

Executive Vice President
dsharpe@nainorcal.com
408.740.7224
CalDRE #00693583

Lidia Buckovic

Transaction Manager
lbuckovic@nainorcal.com
408.740.7225
CalDRE #02064692