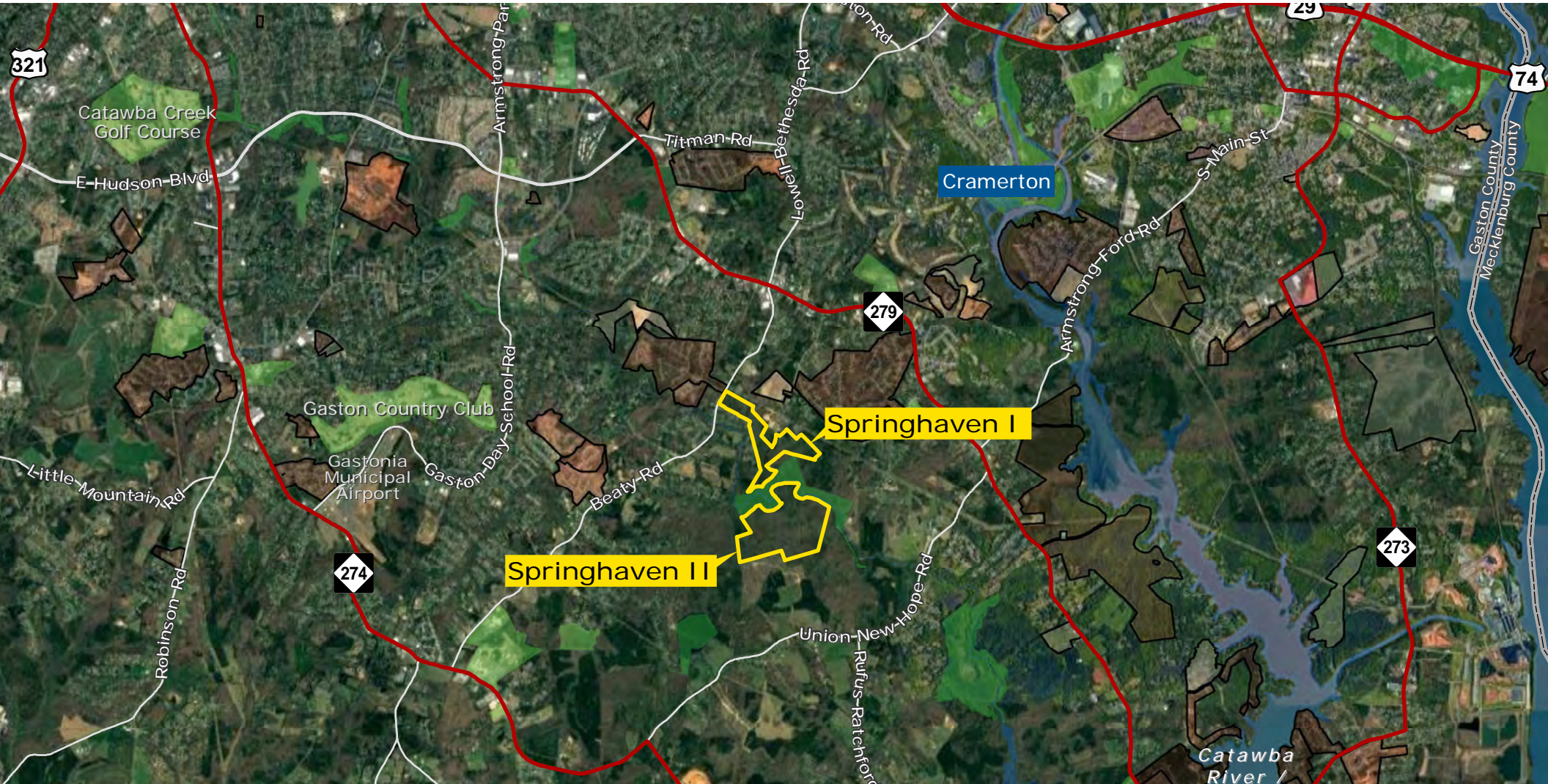


# SPRINGHAVEN II

EXCLUSIVE LISTING | GASTONIA, NORTH CAROLINA



Forde Britt | fbritt@landadvisors.com

1000 West Morehead Street, Suite 130, Charlotte, North Carolina 28208 ph.704.594.7310 | www.landadvisors.com

The information contained herein is from sources deemed reliable. We have no reason to doubt its accuracy but do not guarantee it. It is the responsibility of the person reviewing this information to independently verify it. This package is subject to change, prior sale or complete withdrawal. NCGaston195950 - 12.20.2019





## OFFERING SUMMARY

Sale Price:	Submit All Offers
Size:	±142.99 Acres
Parcels:	221750
Market:	Charlotte
Submarket:	Gaston

## PROPERTY OVERVIEW

Located in the Piedmont area of North Carolina, Gaston County is approximately 20 minutes west of Charlotte. It is the third-largest county in the Charlotte region and offers convenient access to the City of Charlotte and Charlotte Douglas International Airport via Interstate 85 and US Highway 321. In just a 4 hour drive, residents of Gaston County can find themselves along the beaches of Charleston, SC or in the Great Smoky Mountains on the North Carolina/Tennessee border.

Rich in history, Gaston County originally found success in textile production and still remains the top county in cotton consumption and in the number of operating spindles. Today, the county is home to a number of businesses in a variety of manufacturing industries.

## LOCATION

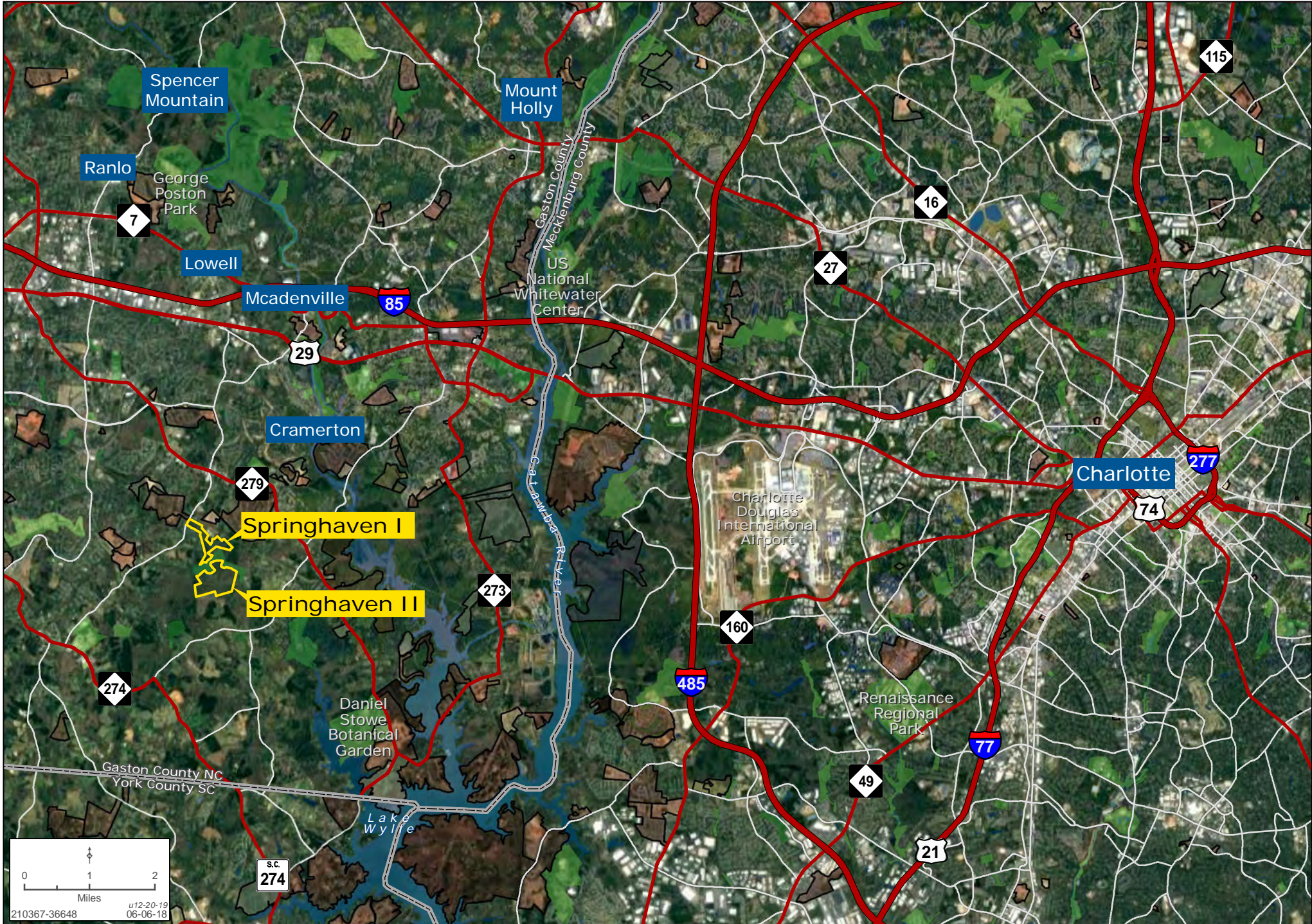
Via 85 South, take Exit 22 and head south on Redbud Road. Turn Left on S. New Hope Road and then Right on Beaty Road. The site will be on your left after less than 1 mile, across from the entrance to Catawba Hills.

## SCHOOLS

Forestview & South Point High School districts

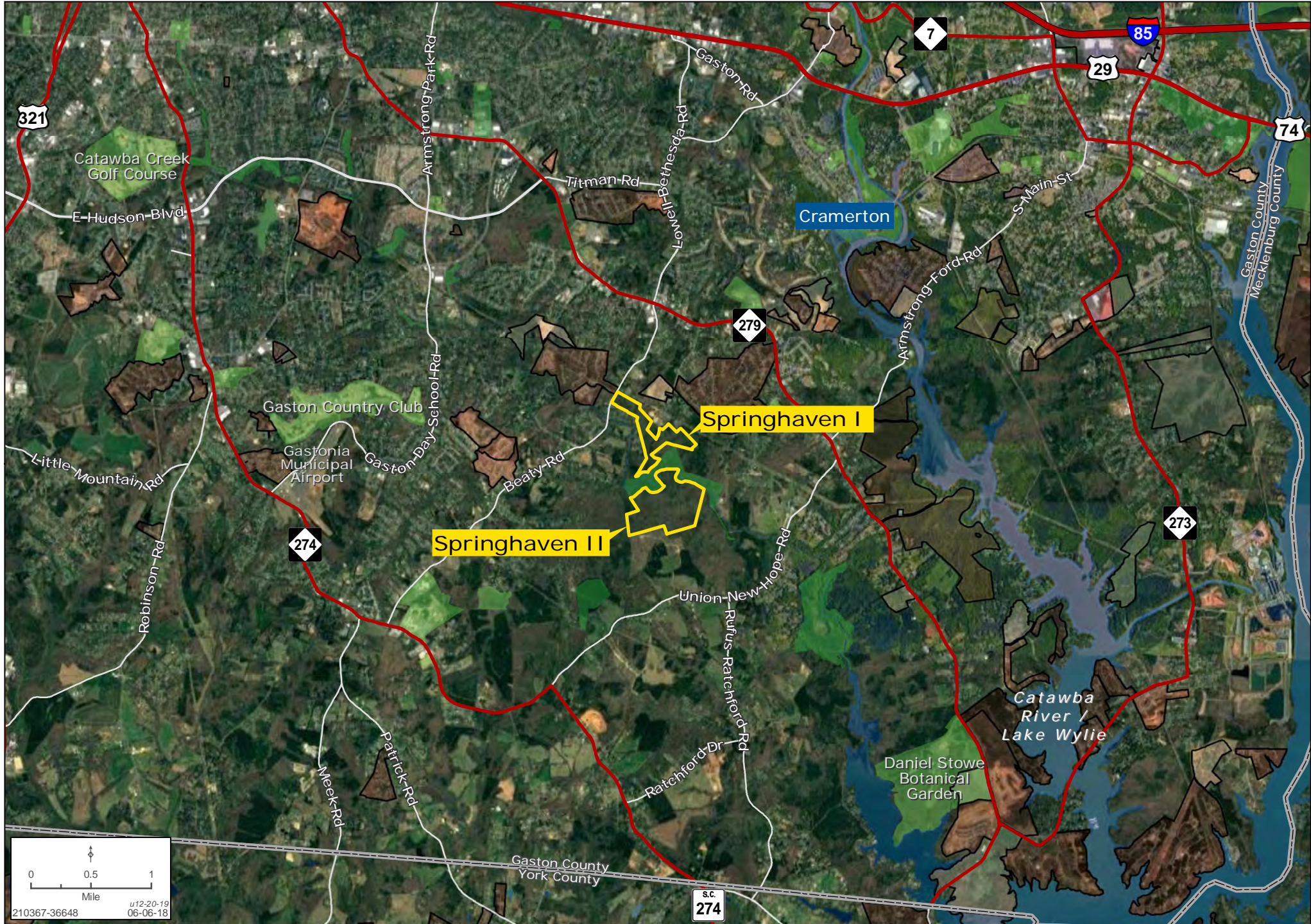
# SPRINGHAVEN II REGIONAL MAP

Forde Britt | 704.594.7310 | www.landadvisors.com



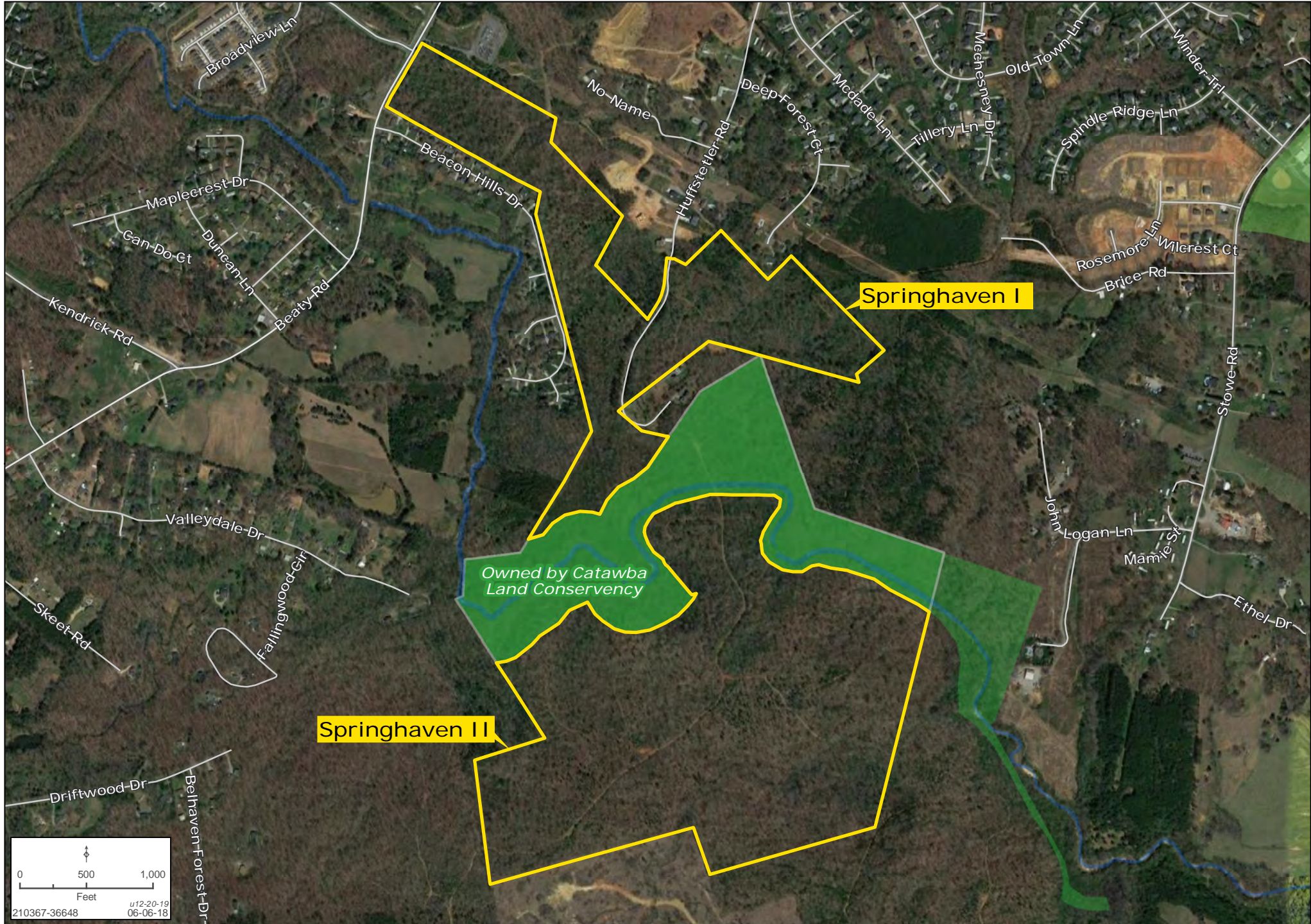
# SPRINGHAVEN II SURROUNDING AREA MAP

Forde Britt | 704.594.7310 | www.landadvisors.com



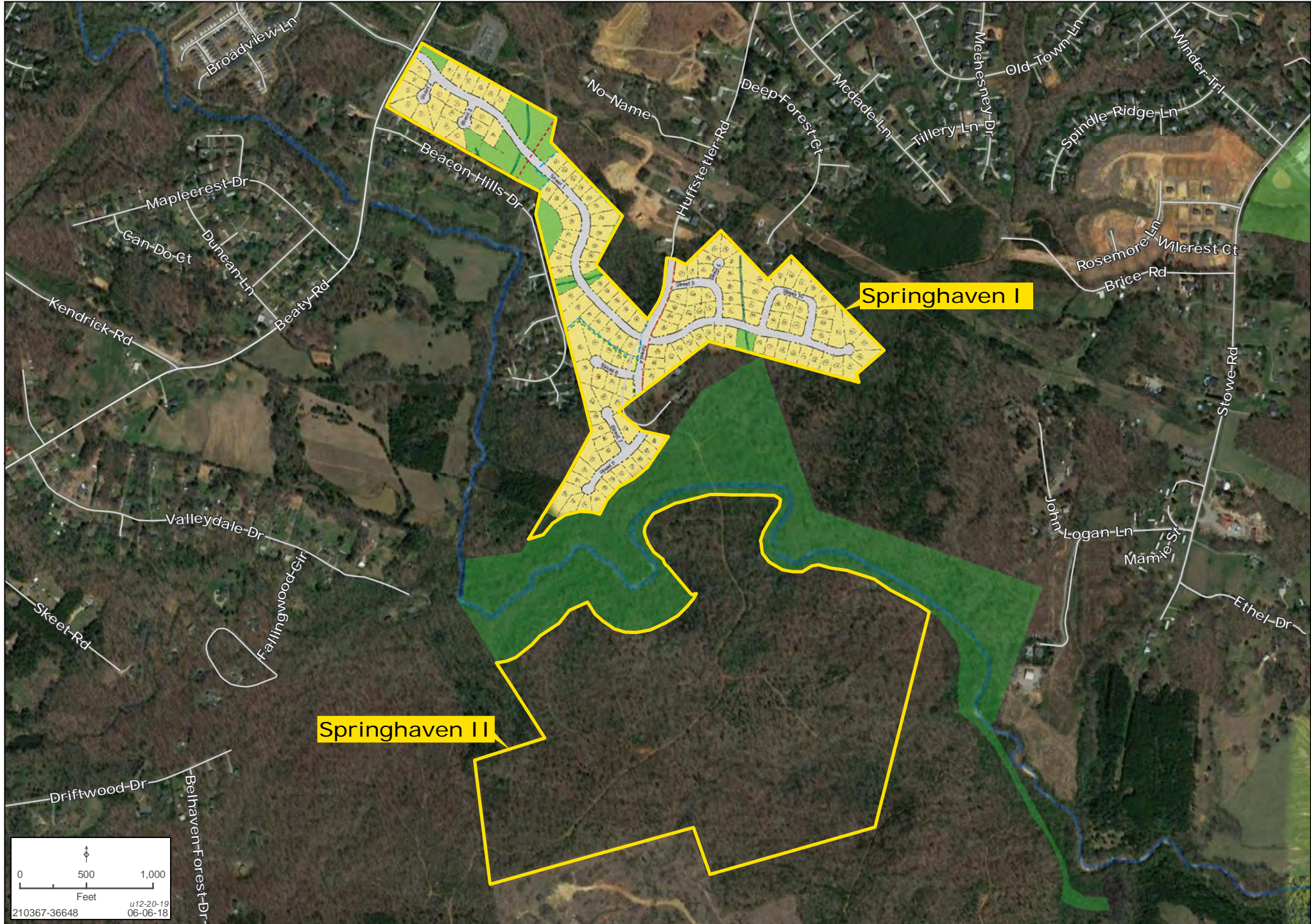
# SPRINGHAVEN II PROPERTY DETAIL MAP

Forde Britt | 704.594.7310 | www.landadvisors.com



# SPRINGHAVEN II SITEPLAN MAP

Forde Britt | 704.594.7310 | www.landadvisors.com



# SPRINGHAVEN II | AREA ATTRACTIONS



## AREA ATTRACTIONS

- Stowe Botanical Gardens
- Belmont Abbey College
- Lake Wylie/Catawba River
- The Chronicle Mill Historic Stowe Mill
- Seven Oaks Nature Preserve -- Thread Trail
- Crowders Mountain State Park
- Christmastown, USA in nearby McAdenville
- US National Whitewater Center



# SPRINGHAVEN II | AREA ATTRACTIONS



Belmont Abbey College



Seven Oaks Nature Preserve -- Thread Trail



Daniel Stowe Botanical Gardens

# The Nation's Leading Land Brokerage & Advisory Firm

Sales • Capital • M&A • Advisory

24 offices across the nation

65+ specialized advisors

25+ staff professionals

\$20+ billion in sales since 1987

Land Advisors Organization is the nation's largest land brokerage company. Founded in 1987, the company has long employed the philosophy of having deeply experienced land brokers as team members, acquiring the most comprehensive data, and utilizing cutting-edge technology to display and interpret this ever-changing collection of informations

SCOTTSDALE, AZ  
CASA GRANDE, AZ  
PRESCOTT, AZ  
TUCSON, AZ  
IRVINE, CA  
BAY AREA, CA  
COACHELLA VALLEY, CA  
PASADENA, CA  
ROSEVILLE, CA  
SAN DIEGO, CA  
SANTA BARBARA, CA  
VALENCIA, CA  
ORLANDO, FL  
TAMPA, FL  
BOISE, ID  
**CHARLOTTE, NC**  
ALBUQUERQUE, NM  
LAS VEGAS, NV  
RENO, NV  
AUSTIN, TX  
DALLAS-FORT WORTH, TX  
HOUSTON, TX  
SALT LAKE CITY, UT  
BELLEVUE, WA

FUTURE OFFICES  
DENVER, CO  
WASHINGTON, DC  
ATLANTA, GA  
PORTLAND, OR  
CHARLESTON, SC  
RICHMOND, VA

Charlotte Market Advisor:

**Forde Britt** | [fbritt@landadvisors.com](mailto:fbritt@landadvisors.com) | Phone: 704.594.7310

1000 West Morehead Street, Suite 130, Charlotte, North Carolina 28208

[LandAdvisors.com](http://LandAdvisors.com)

