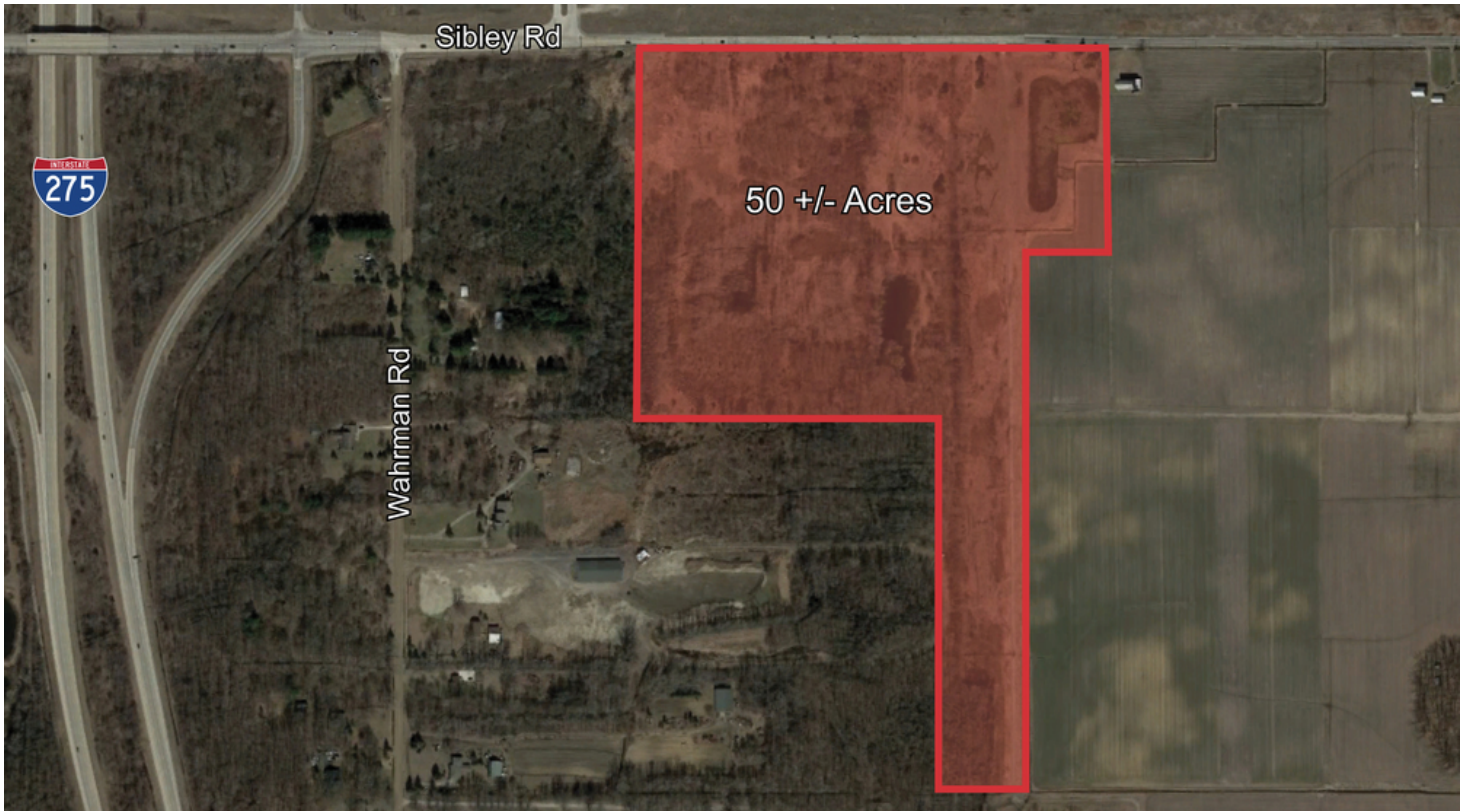


50 +/- ACRES LAND



FOR SALE



34595-34887 Sibley Rd

New Boston, Michigan 48164

Property Highlights

- 50+/- Acres
- Rapidly Expanding Industrial Market
- Zoned Agricultural - Rezoning Possible
- Easy On/Off Access to I-275 Ideal for Truck Traffic
- Utilities at Road
- Less than 2.5 Miles from Metro Airport
- 5 Miles to I-75, 4.5 Miles to I-94

OFFERING SUMMARY

Sale Price:	Contact Listing Agent(s)
Lot Size:	50 Acres

DEMOGRAPHICS	1 MILE	5 MILES	10 MILES
Total Households	504	12,589	120,492
Total Population	1,302	34,051	325,303
Average HH Income	\$59,328	\$64,561	\$59,266

NAI Farbman

Commercial Real Estate Services, Worldwide.

www.naifarbman.com

Paul DeBono
Vice President | 248.470.3015
debono@farbman.com

Albert Ellis
Associate Broker | 586.822.2909
ellis@farbman.com

NO WARRANTY, EXPRESS OR IMPLIED, IS MADE AS TO THE ACCURACY OF THE INFORMATION CONTAINED HEREIN. THIS INFORMATION IS SUBMITTED SUBJECT TO ERRORS, OMISSIONS, CHANGE OF PRICE, RENTAL OR OTHER CONDITIONS, WITHDRAWAL WITHOUT NOTICE, AND IS SUBJECT TO ANY SPECIAL LISTING CONDITIONS IMPOSED BY OUR PRINCIPALS, COOPERATING BROKERS, BUYERS, TENANTS AND OTHER PARTIES WHO RECEIVE THIS DOCUMENT SHOULD NOT RELY ON IT, BUT SHOULD USE IT AS A STARTING POINT OF ANALYSIS, AND SHOULD INDEPENDENTLY CONFIRM THE ACCURACY OF THE INFORMATION CONTAINED HEREIN THROUGH A DUE DILIGENCE REVIEW OF THE BOOKS, RECORDS, FILES AND DOCUMENTS THAT CONSTITUTE RELIABLE SOURCES OF THE INFORMATION DESCRIBED HEREIN. LOGOS ARE FOR IDENTIFICATION PURPOSES ONLY AND MAY BE TRADEMARKS OF THEIR RESPECTIVE COMPANIES. NAI CAPITAL, INC. CA BRE LIC. #01990696.

50 +/- ACRES
LAND



FOR SALE



Commercial Real Estate Services, Worldwide.
www.naifarbman.com

Paul DeBono
Vice President | 248.470.3015
debono@farbman.com

Albert Ellis
Associate Broker | 586.822.2909
ellis@farbman.com

NO WARRANTY, EXPRESS OR IMPLIED, IS MADE AS TO THE ACCURACY OF THE INFORMATION CONTAINED HEREIN. THIS INFORMATION IS SUBMITTED SUBJECT TO ERRORS, OMISSIONS, CHANGE OF PRICE, RENTAL OR OTHER CONDITIONS, WITHDRAWAL WITHOUT NOTICE, AND IS SUBJECT TO ANY SPECIAL LISTING CONDITIONS IMPOSED BY OUR PRINCIPALS, COOPERATING BROKERS, BUYERS, TENANTS AND OTHER PARTIES WHO RECEIVE THIS DOCUMENT SHOULD NOT RELY ON IT, BUT SHOULD USE IT AS A STARTING POINT OF ANALYSIS, AND SHOULD INDEPENDENTLY CONFIRM THE ACCURACY OF THE INFORMATION CONTAINED HEREIN THROUGH A DUE DILIGENCE REVIEW OF THE BOOKS, RECORDS, FILES AND DOCUMENTS THAT CONSTITUTE RELIABLE SOURCES OF THE INFORMATION DESCRIBED HEREIN. LOGOS ARE FOR IDENTIFICATION PURPOSES ONLY AND MAY BE TRADEMARKS OF THEIR RESPECTIVE COMPANIES. NAI CAPITAL, INC. CA BRE LIC. #01890696.

50 +/- ACRES
LAND



FOR SALE



NAI Farberman

Commercial Real Estate Services, Worldwide.
www.naifarberman.com

Paul DeBono
Vice President | 248.470.3015
debono@farberman.com

Albert Ellis
Associate Broker | 586.822.2909
ellis@farberman.com

NO WARRANTY, EXPRESS OR IMPLIED, IS MADE AS TO THE ACCURACY OF THE INFORMATION CONTAINED HEREIN. THIS INFORMATION IS SUBMITTED SUBJECT TO ERRORS, OMISSIONS, CHANGE OF PRICE, RENTAL OR OTHER CONDITIONS, WITHDRAWAL WITHOUT NOTICE, AND IS SUBJECT TO ANY SPECIAL LISTING CONDITIONS IMPOSED BY OUR PRINCIPALS, COOPERATING BROKERS, BUYERS, TENANTS AND OTHER PARTIES WHO RECEIVE THIS DOCUMENT SHOULD NOT RELY ON IT, BUT SHOULD USE IT AS A STARTING POINT OF ANALYSIS, AND SHOULD INDEPENDENTLY CONFIRM THE ACCURACY OF THE INFORMATION CONTAINED HEREIN THROUGH A DUE DILIGENCE REVIEW OF THE BOOKS, RECORDS, FILES AND DOCUMENTS THAT CONSTITUTE RELIABLE SOURCES OF THE INFORMATION DESCRIBED HEREIN. LOGOS ARE FOR IDENTIFICATION PURPOSES ONLY AND MAY BE TRADEMARKS OF THEIR RESPECTIVE COMPANIES. NAI CAPITAL, INC. CA BRE LIC. #01890696.