

# HWY 521/ SC 75 HARD CORNER

±25 ACRES AVAILABLE

**LOCATION** Hwy 521 and SC 75 in Lancaster, SC

**SIZE** ±25 Acres

**PRICE** Call For Pricing



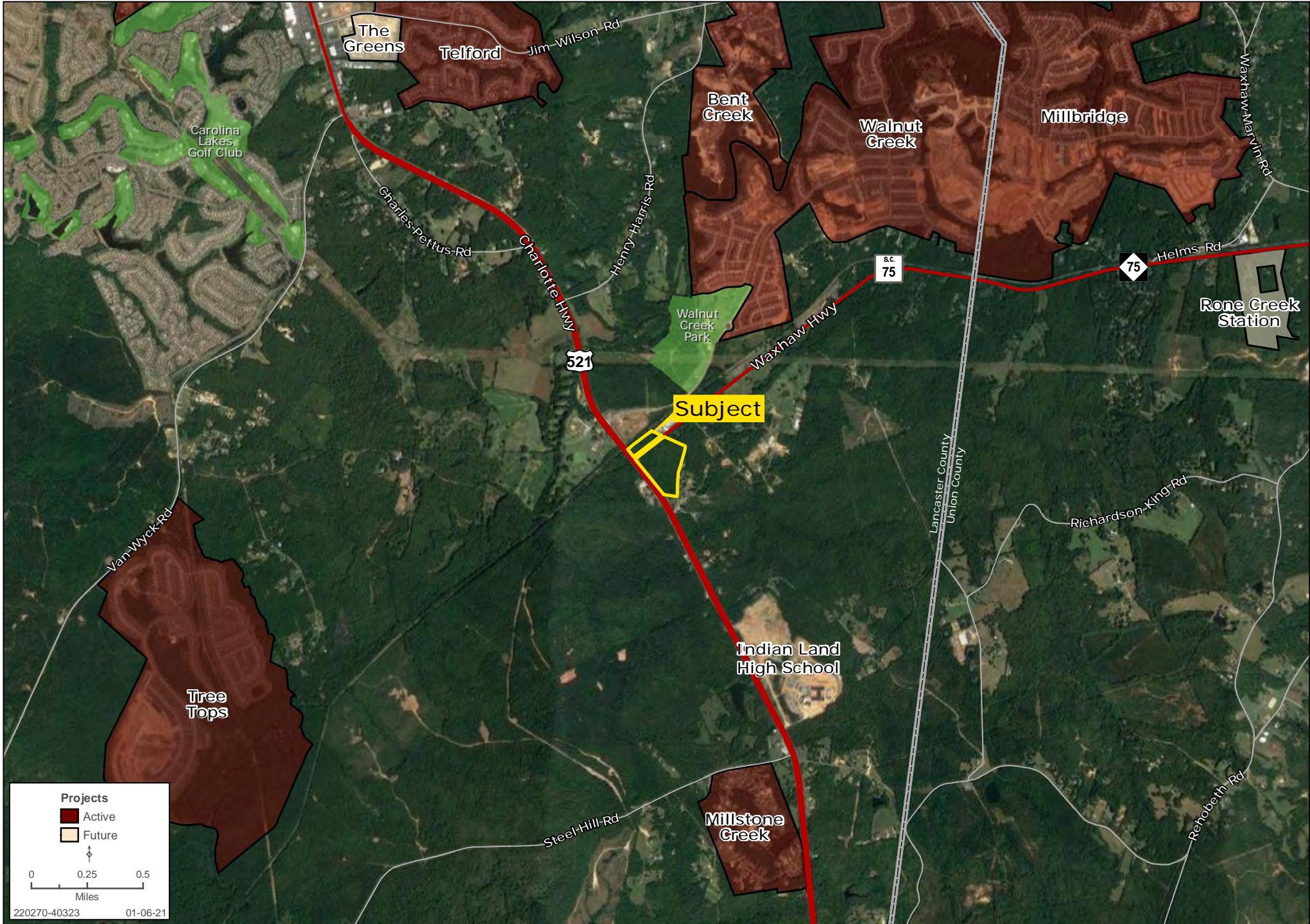
**Forde Britt** | fbritt@landadvisors.com **Hayes Faulkenberry** | hfaulkenberry@landadvisors.com - cell: 803.417.5023  
1000 West Morehead Street, Suite 130, Charlotte, North Carolina 28208 office 704.594.7310 | www.landadvisors.com

The information contained herein is from sources deemed reliable. We have no reason to doubt its accuracy but do not guarantee it. It is the responsibility of the person reviewing this information to independently verify it. This package is subject to change, prior sale or complete withdrawal. SCLancaster220270 - 04.27.2021

 Land Advisors<sup>®</sup>  
ORGANIZATION

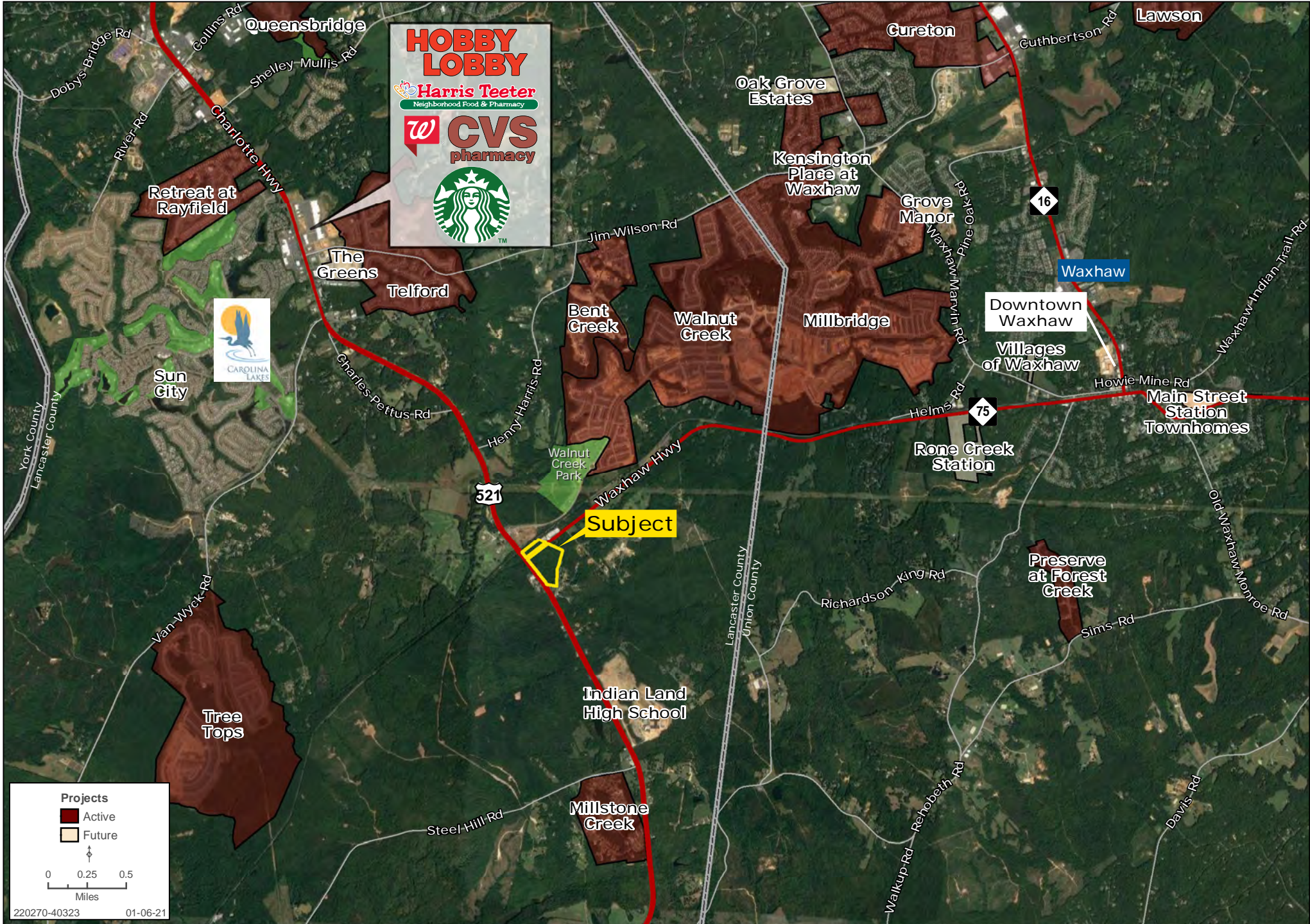
# AREA MAP | HWY 521 + US 75 HARD CORNER ACREAGE

Forde Britt | Hayes Faulkenberry | 704.594.7310 | www.landadvisors.com



# AMENITIES MAP | HWY 521 + US 75 HARD CORNER ACREAGE

Forde Britt | Hayes Faulkenberry | 704.594.7310 | www.landadvisors.com



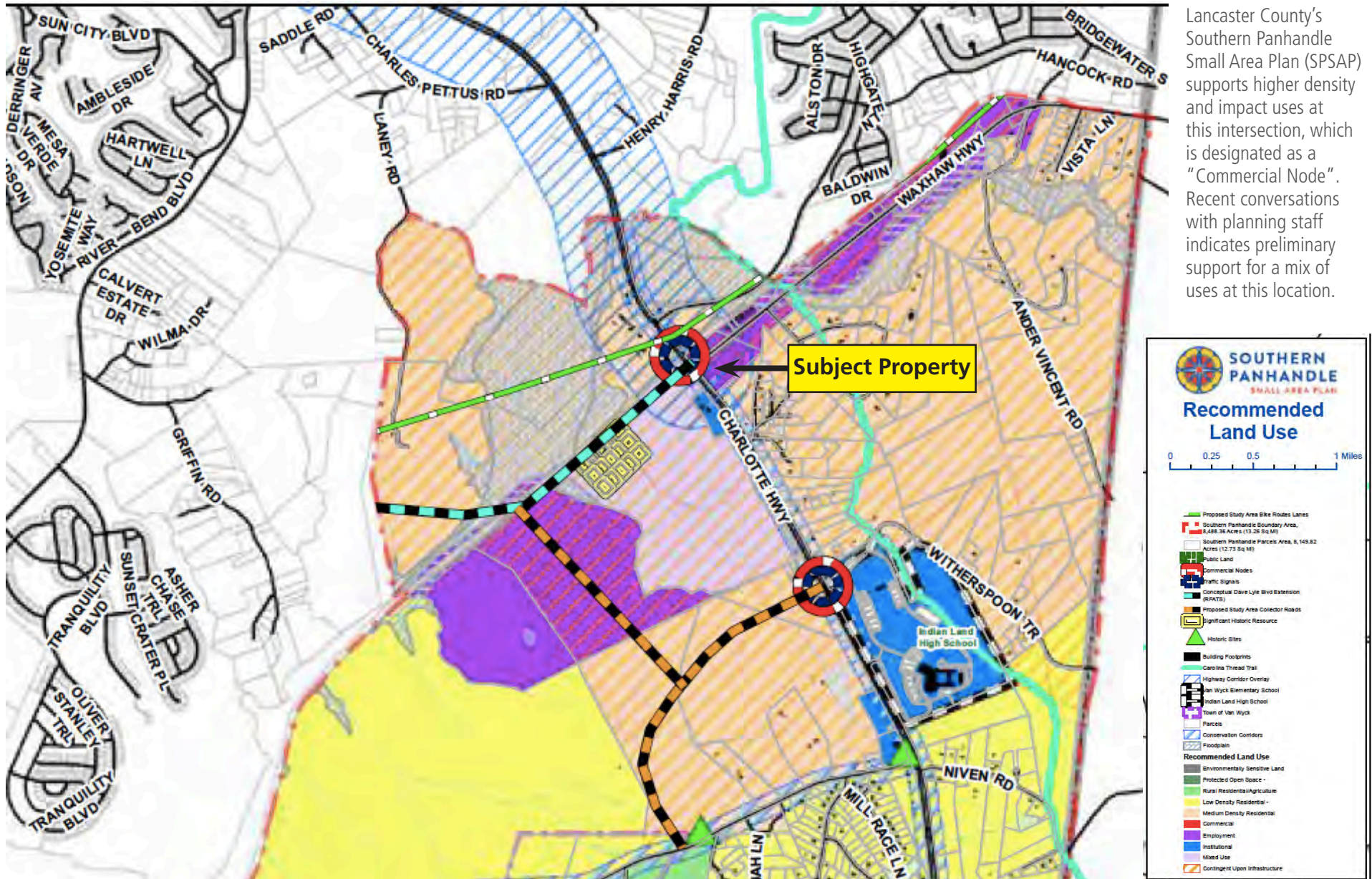
# PROPERTY DETAIL MAP | HWY 521 + US 75 HARD CORNER ACREAGE

Forde Britt | Hayes Faulkenberry | 704.594.7310 | www.landadvisors.com



# LAND USE PLAN

Forde Britt | Hayes Faulkenberry | 704.594.7310 | www.landadvisors.com



Lancaster County's Southern Panhandle Small Area Plan (SPSAP) supports higher density and impact uses at this intersection, which is designated as a "Commercial Node". Recent conversations with planning staff indicates preliminary support for a mix of uses at this location.

# PROPERTY PHOTOS

Forde Britt | Hayes Faulkenberry | 704.594.7310 | www.landadvisors.com



# The Nation's Leading Land Brokerage & Advisory Firm

Sales • Capital • M&A • Advisory

26 offices across the nation

65+ specialized advisors

25+ staff professionals

\$20+ billion in sales since 1987

Land Advisors Organization is the nation's largest land brokerage company. Founded in 1987, the company has long employed the philosophy of having deeply experienced land brokers as team members, acquiring the most comprehensive data, and utilizing cutting-edge technology to display and interpret this ever-changing collection of informations

Charlotte Market Advisor:

**Forde Britt** fbritt@landadvisors.com | Phone: 704.594.7310

1000 West Morehead Street, Suite 130, Charlotte, North Carolina 28208

[LandAdvisors.com](http://LandAdvisors.com)

SCOTTSDALE, AZ  
CASA GRANDE, AZ  
PRESCOTT, AZ  
TUCSON, AZ  
IRVINE, CA  
BAY AREA, CA  
COACHELLA VALLEY, CA  
PASADENA, CA  
ROSEVILLE, CA  
SAN DIEGO, CA  
SANTA BARBARA, CA  
VALENCIA, CA  
JACKSONVILLE, FL  
ORLANDO, FL  
TAMPA, FL  
ATLANTA, GA  
BOISE, ID  
**CHARLOTTE, NC**  
ALBUQUERQUE, NM  
LAS VEGAS, NV  
RENO, NV  
AUSTIN, TX  
DALLAS-FORT WORTH, TX  
HOUSTON, TX  
SALT LAKE CITY, UT  
BELLEVUE, WA  
FUTURE OFFICES  
DENVER, CO  
WASHINGTON, DC  
PORTLAND, OR  
CHARLESTON, SC  
RICHMOND, VA