

For Lease

# Medical Office

1,090 - 7,335 SF



## Providence Medical Building

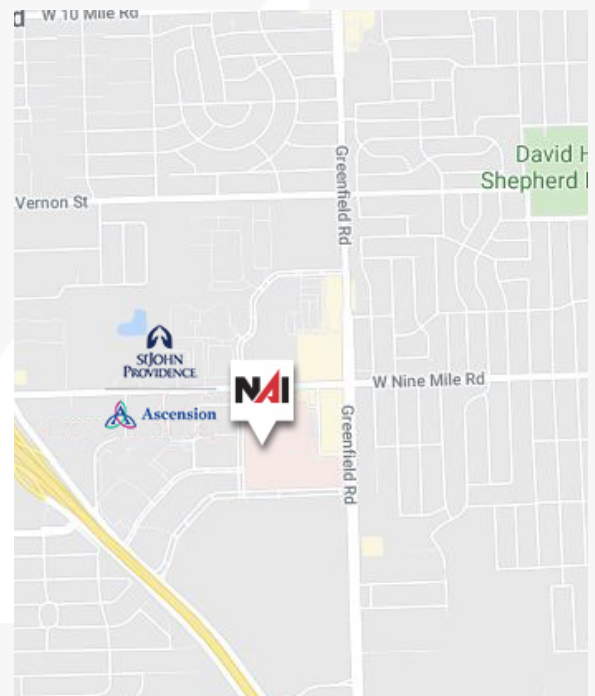
22250 Providence Drive, Southfield, Michigan 48075

### Property Highlights

- Connected to St. John Providence Hospital
- Convenient to I-696 and Southfield Freeway Interchange
- Onsite Management
- Covered Drop-Off
- Hospital Services Include Mammography, Radiology, Family Practice, Lab, Pharmacy, and Security
- Free Parking with Valet Option
- Credit Union, Conference Center and Food Amenities

### Available Spaces - \* can be combined

Spaces	Lease Rate	Size (SF)
LOB 100	\$17.50 SF/yr	2,514
LOB 101	\$17.50 SF/yr	1,335
Suite 205	\$17.00 SF/yr	2,230
Suite 403*	\$17.00 SF/yr	2,279
Suite 406*	\$17.00 SF/yr	2,365
Suite 408*	\$17.00 SF/yr	2,691
Suite 607	\$17.00 SF/yr	1,090
Suite 702	\$17.00 SF/yr	3,846



For more information

**Jeff Cavazos**

O: 248 613 6457  
jcavazos@farbman.com

**Kristi Lawton**

O: 248 351 4358  
lawton@farbman.com

**NAI Farbman**

Commercial Real Estate Services, Worldwide.



**FG**  
WWW.FARBMAN.COM

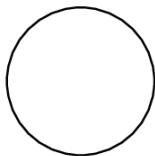
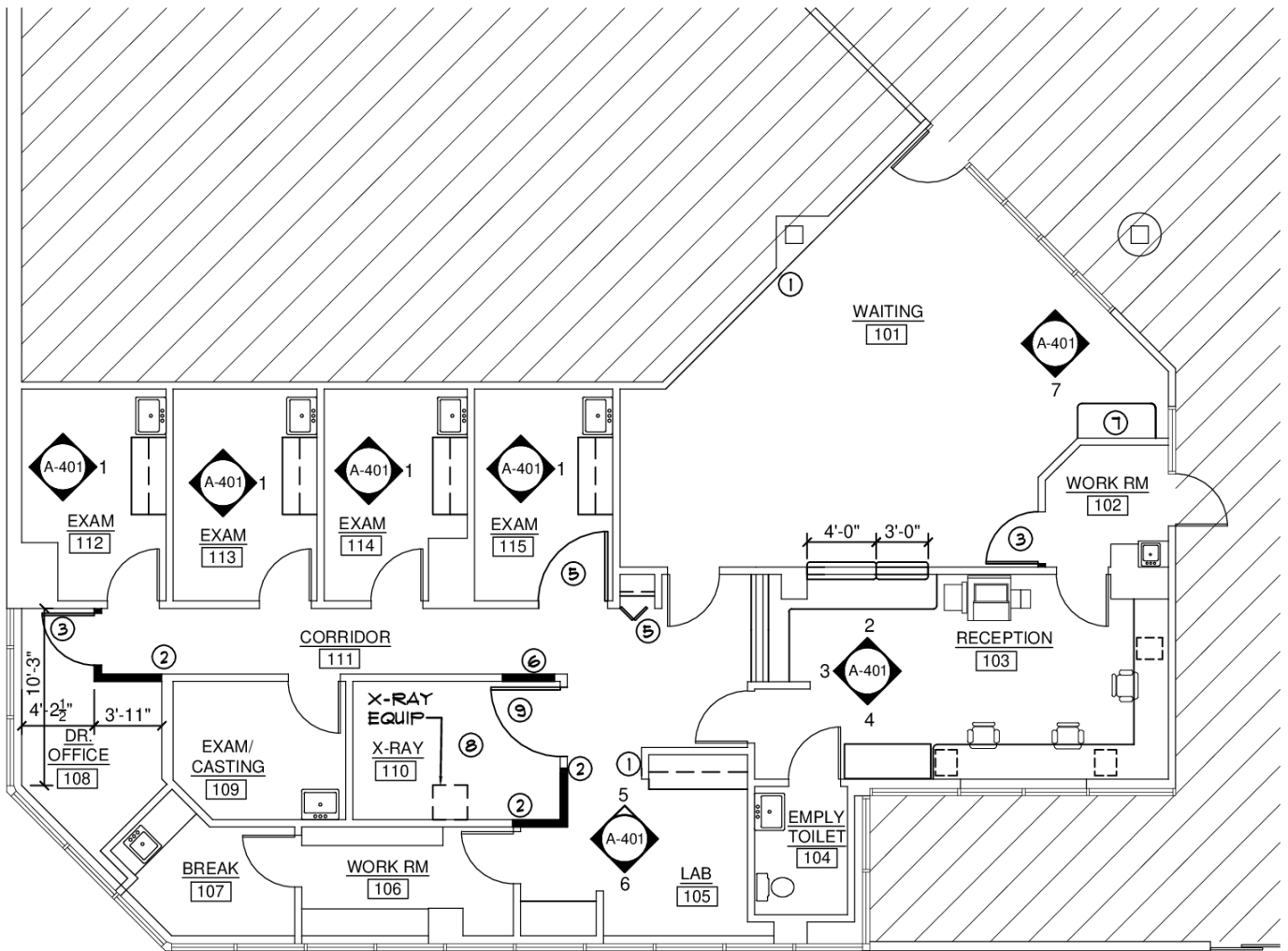


**MIDWEST EXPERTISE, GLOBAL REACH.**

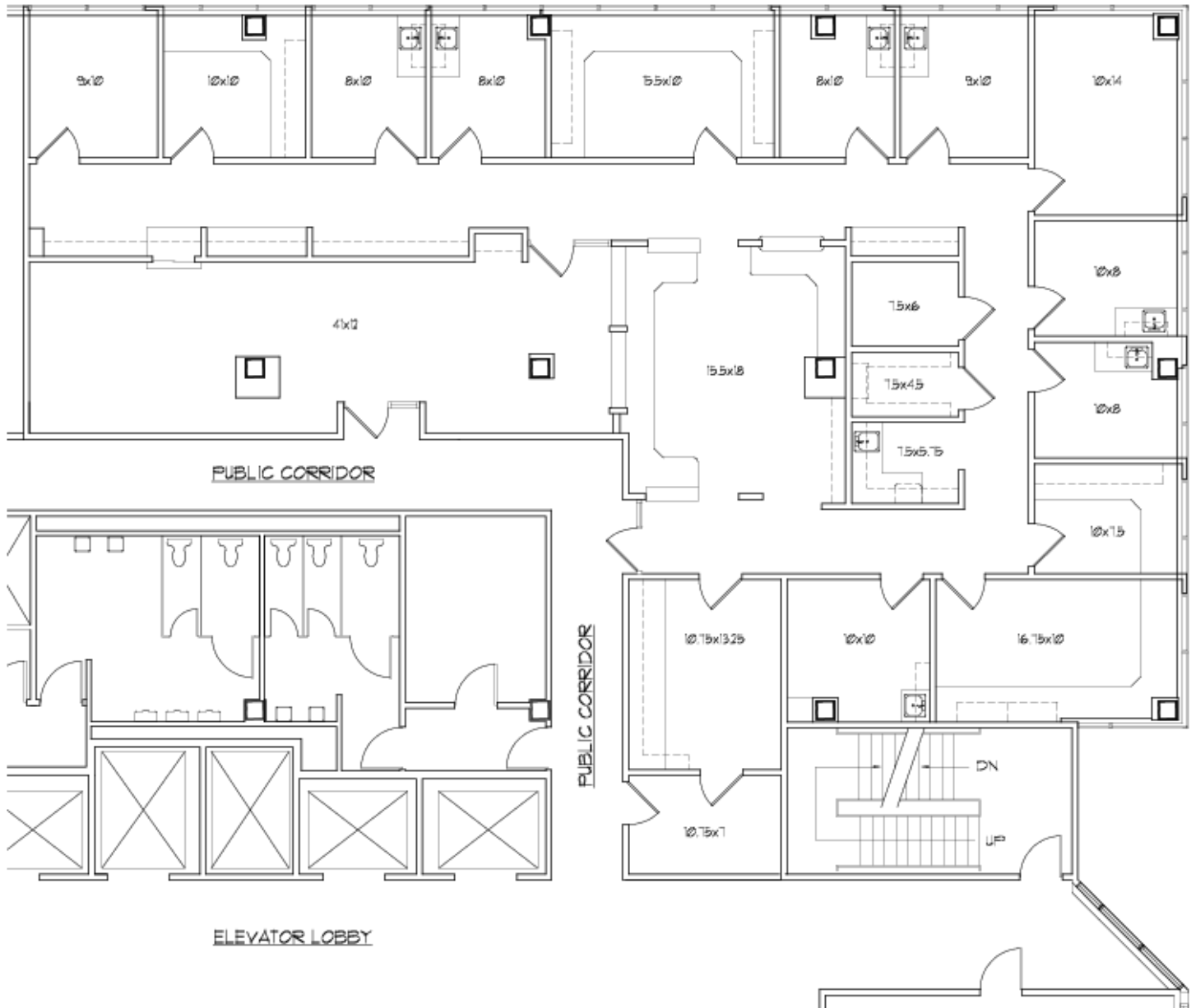
28400 Northwestern Hwy  
Fourth Floor  
Southfield, MI 48034  
248 353 0500 tel  
[naifarbman.com](http://naifarbman.com)

# Additional Photos





**FLOOR PLAN**  
SCALE: 1/8" = 1'-0"



NOTE: ROOM SIZES ARE APPROXIMATE

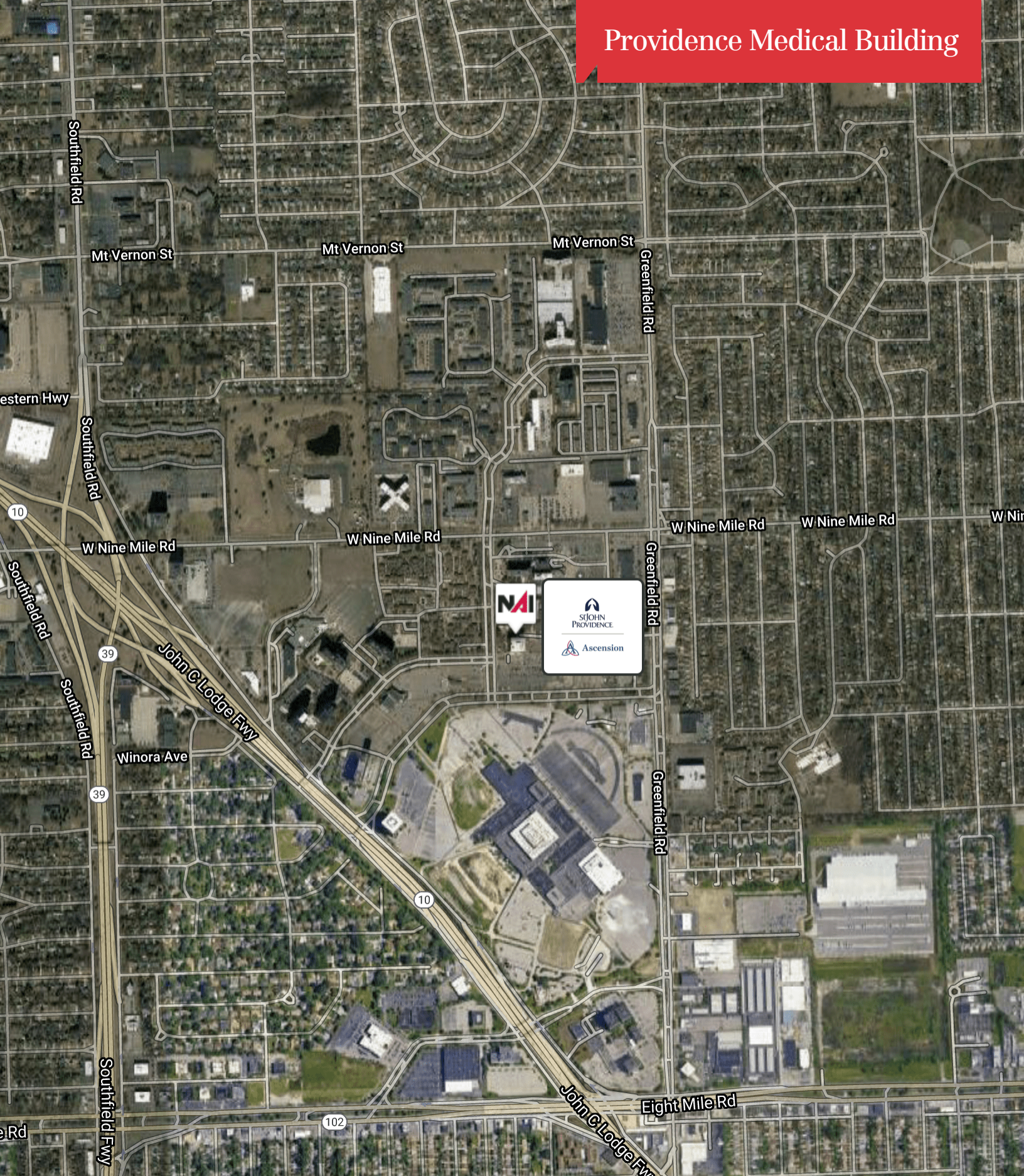


**FLOOR PLAN - SUITE 702**  
**PROVIDENCE PROFESSIONAL**  
**OFFICE BUILDING**

DATE: 1-29-21  
 3,846 RSF

SCALE: 1/8" = 1'-0"

# Providence Medical Building



Map data ©2021 Imagery ©2021 , CNES / Airbus, Maxar Technologies, Sanborn, U.S. Geological Survey, USDA Farm Service Agency