

± 122 ACRES HWY 89A

PRESCOTT VALLEY, ARIZONA

LOCATION North Side of State Route 89A approximately 1.5 miles east of Coyote Springs Road, Prescott Valley, Yavapai County, Arizona.

PARCEL 401-01-113M

SIZE ±122.54 Acres

PRICE \$2,500,000 (\$20,500 per acre)

ZONING RCU

UTILITIES

Electric: Arizona Public Service
Water: Town of Prescott Valley
Sewer: Town of Prescott Valley
Phone: CenturyLink
Cable TV/Internet: Sparklight

PROPERTY TAXES \$24.00 (2019)

COMMENTS

Approximately 122+/- acres of raw land located adjacent to State Route 89A and directly north of the Yavapai County Fairgrounds, an RV park, and The Arizona Downs horse racing facility. Generally level with high traffic counts and great visibility. Excellent potential for either residential or commercial development.



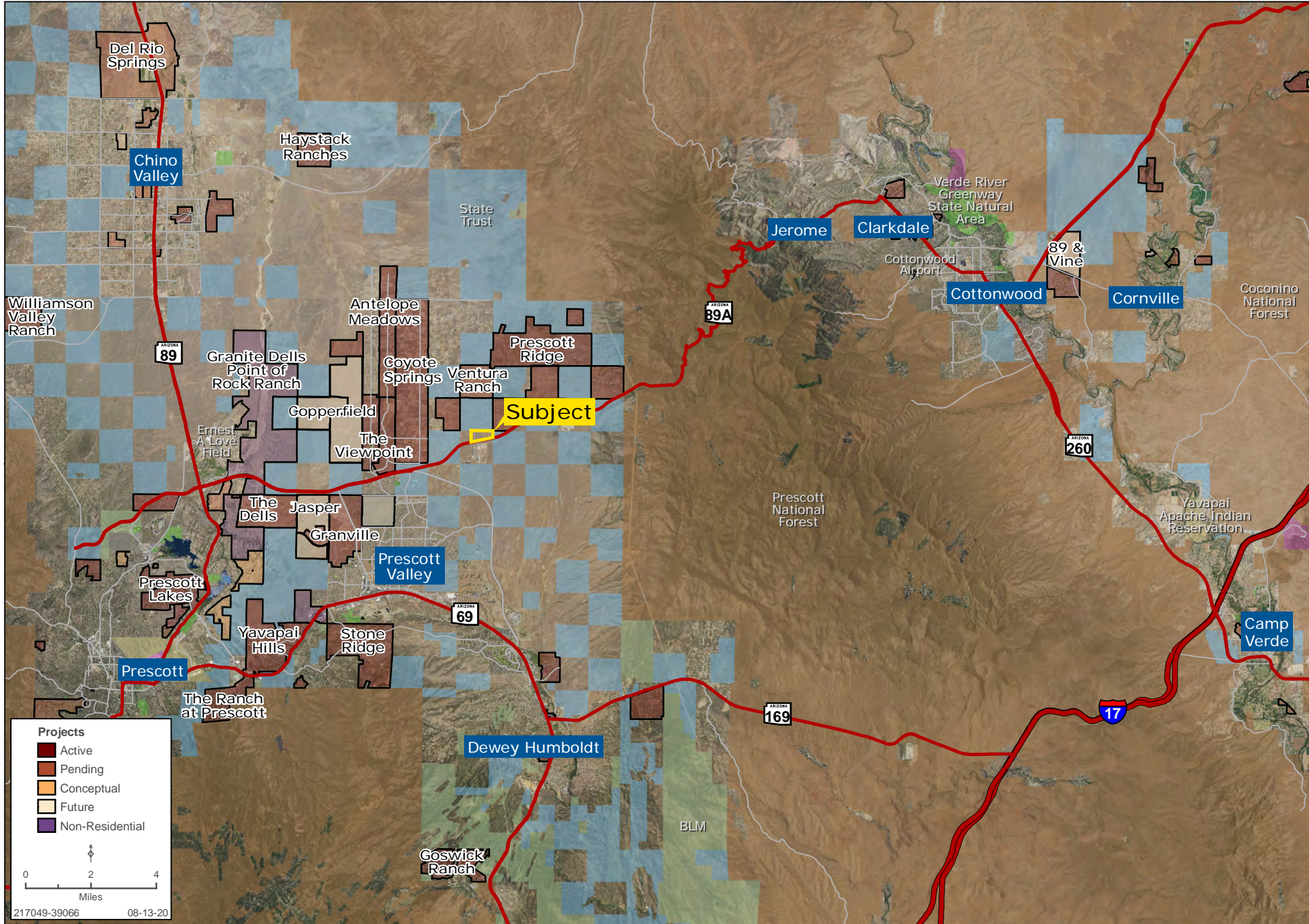
Capri Barney | cbarney@landadvisors.com

4900 North Scottsdale Road, Suite 3000, Scottsdale, Arizona 85251 ph. 928.445.4457 | www.landadvisors.com

The information contained herein is from sources deemed reliable. We have no reason to doubt its accuracy but do not guarantee it. It is the responsibility of the person reviewing this information to independently verify it. This package is subject to change, prior sale or complete withdrawal. AZYavapai217049 - 08.18.2020

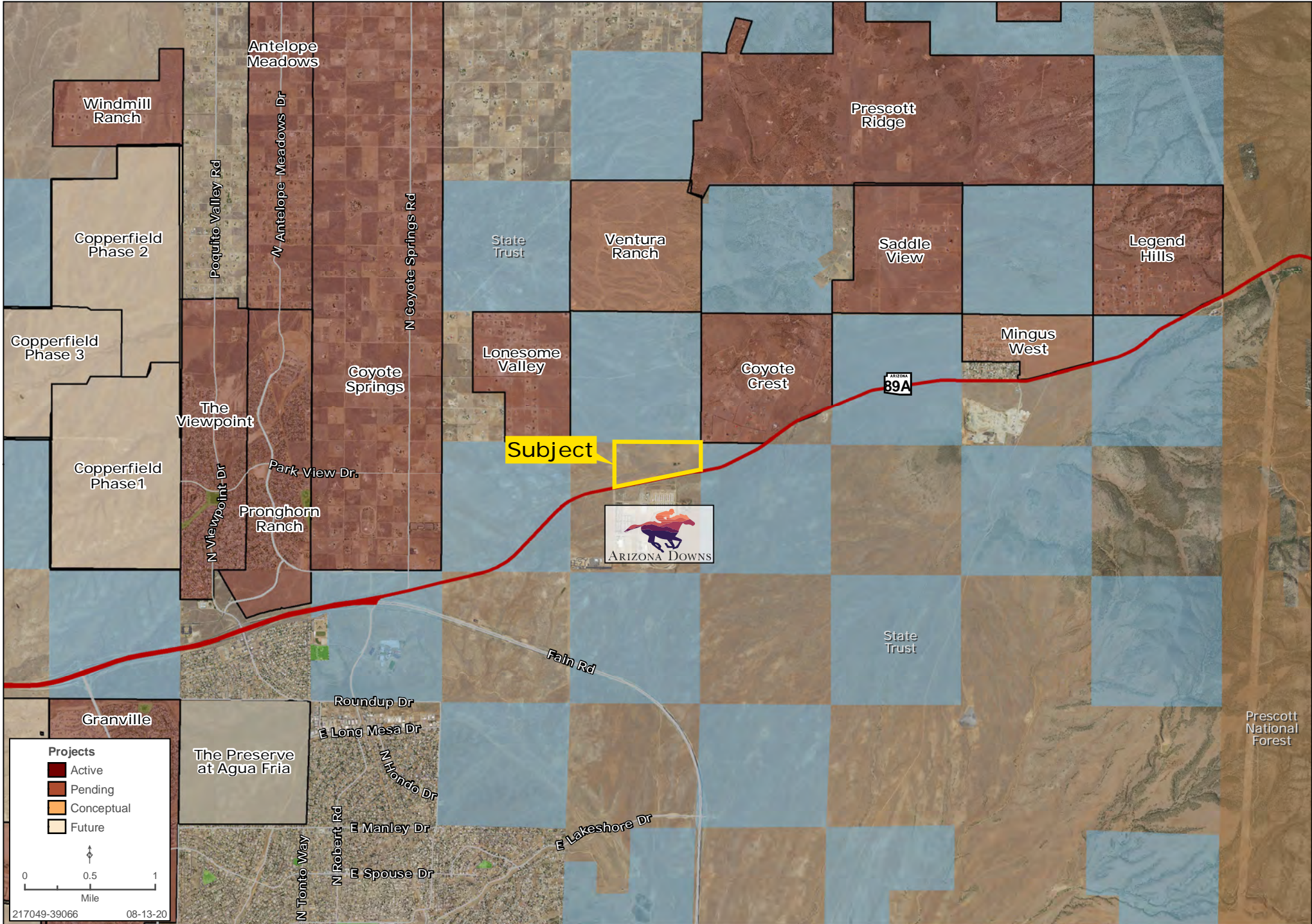
REGIONAL MAP | HWY 89A, +/-122 ACRES, PRESCOTT VALLEY, AZ

Mike Schwab | Capri Barney | 928.445.4457 | www.landadvisors.com



AREA MAP | HWY 89A, +/-122 ACRES, PRESCOTT VALLEY, AZ

Mike Schwab | Capri Barney | 928.445.4457 | www.landadvisors.com



DETAIL MAP | HWY 89A, +/-122 ACRES, PRESCOTT VALLEY, AZ

Mike Schwab | Capri Barney | 928.445.4457 | www.landadvisors.com

