



For Lease
Office | 2,071 SF
 \$20.00 SF/yr

2720 S. Washington Ave

Lansing, Michigan 48910

Property Highlights

- 2,071 SF
- 3 private exam rooms with sinks
- 2 private offices
- 2 unisex restrooms in-suite
- Break room
- Reception desk with check-in/check-out window
- Spacious waiting room
- Private suite entrance in addition to the common area entrance
- Located across the street from McLaren Greater Lansing Hospital
- Situated on CATA bus route

Property Description

Medical office for lease in multi-tenant medical building in south Lansing near McLaren Greater Lansing Hospital

OFFERING SUMMARY

Available SF	2,071 SF
Lease Rate	\$20.00 SF/yr (MG)
Building Size	20,050 SF

DEMOGRAPHICS

Stats	Population	Avg. HH Income
1 Mile	13,704	\$50,034
3 Miles	98,065	\$45,511
5 Miles	203,387	\$49,666

For more information

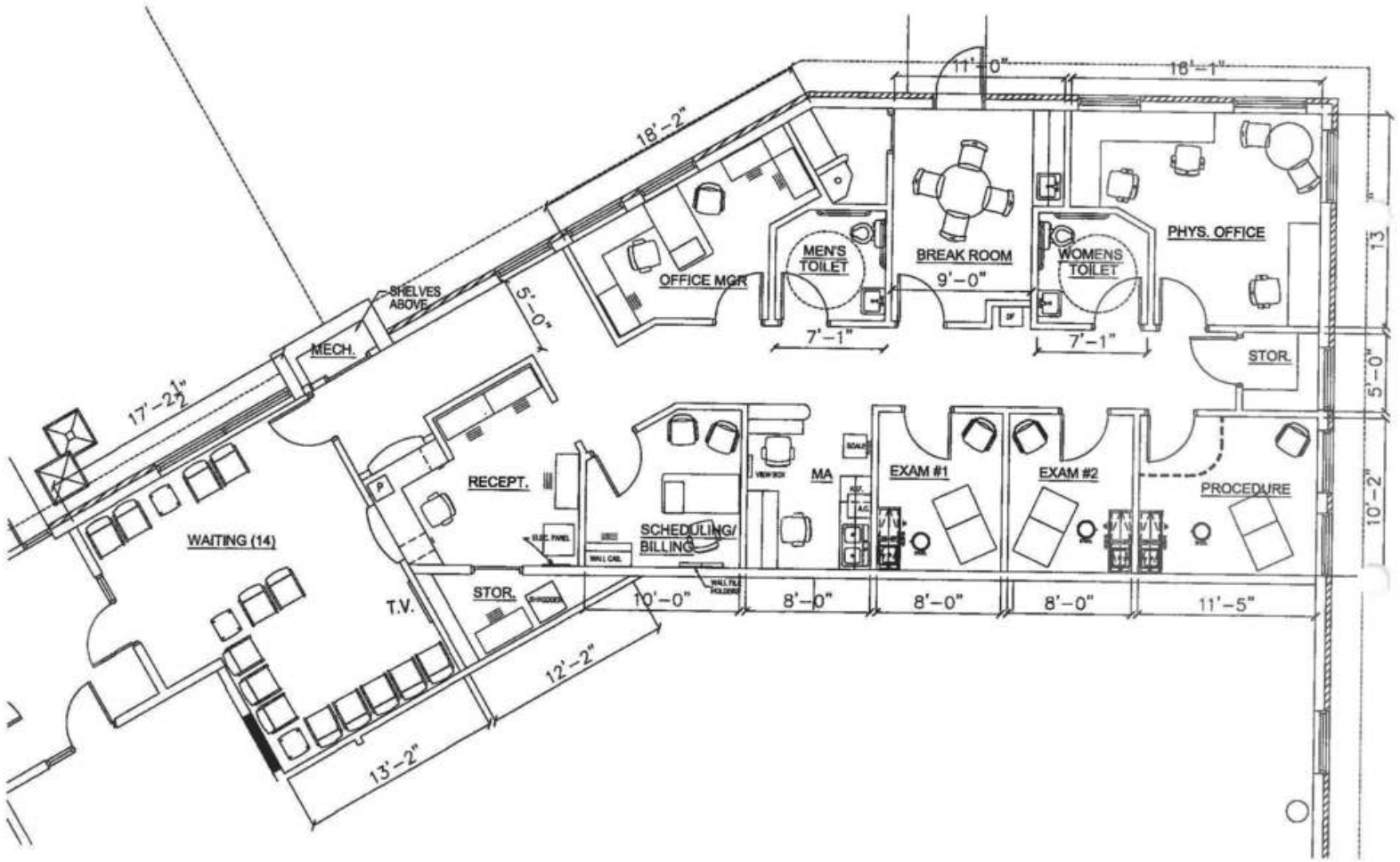
Tanner Lundberg, Commercial Advisor

O: 517 487 9222 | C: 517 281 1962
 tlundberg@naimidmichigan.com

Jim Vlahakis, Principal

O: 517 487 9222 | C: 517 881 9916
 jvlahakis@naimidmichigan.com

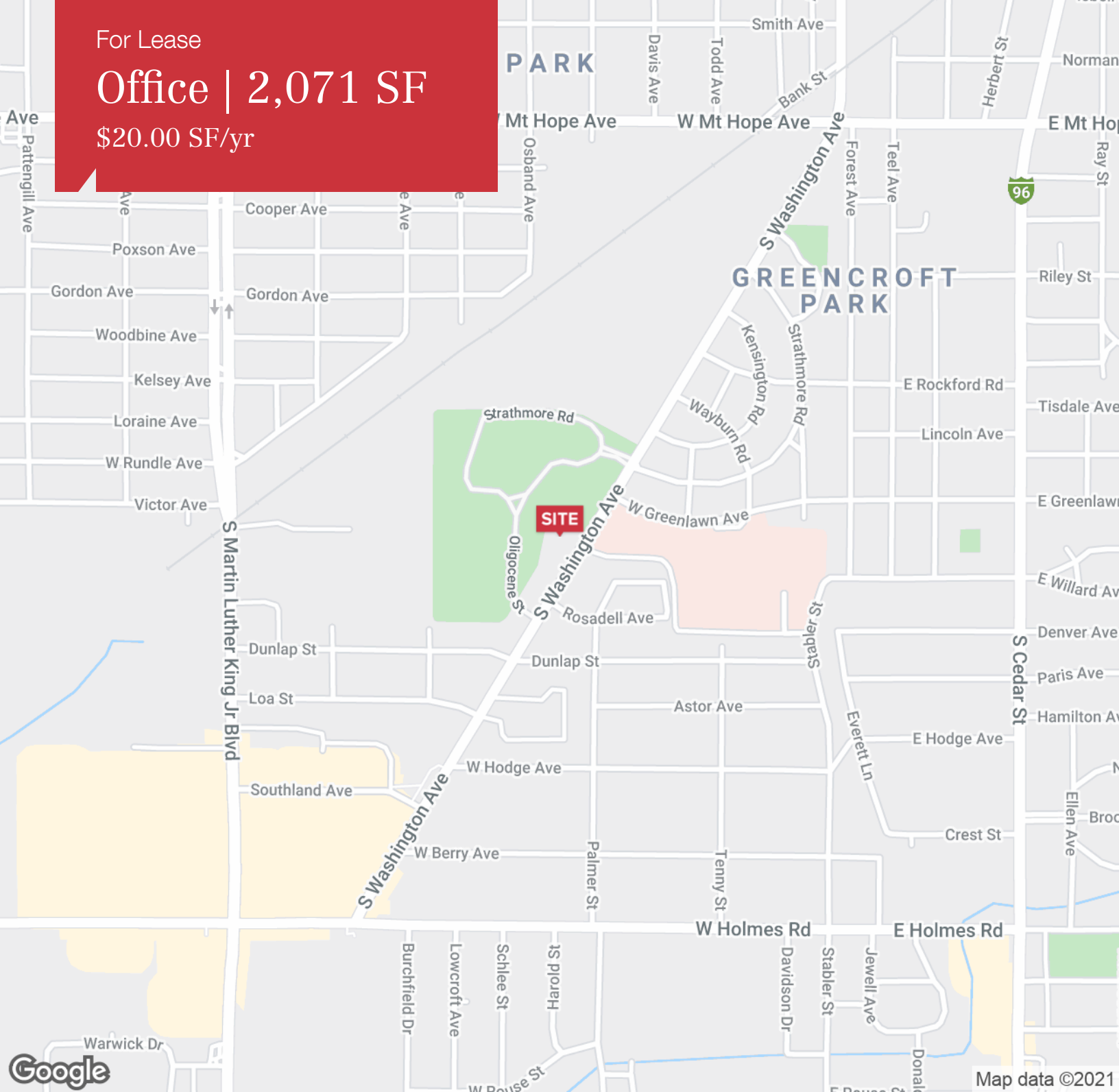
Additional Photos



For Lease

Office | 2,071 SF

\$20.00 SF/yr



LOCATION DESCRIPTION

Located on South Washington Ave less than 2 miles south of REO Town and the I-496 interchange and one block away from McLaren Greater Lansing Hospital.