

For Lease

Retail | 14,000 SF

\$16.50 SF/yr



2030 & 2054 N CEDAR ST

2030 & 2054 N Cedar St
Holt, Michigan 48842

Property Highlights

- "Esquer Square" in Holt
- 14,000 Sq. Ft. of commercial space available
- Exciting new Mixed-Use property
- Space delivered in "White Box" Condition
- Available Fall of 2019
- Estimated NNN - \$3.75 PSF

Property Description

Exciting new Mixed-Use property delivered in "White Box" condition available Fall of 2019.

Available Spaces

Spaces	Lease Rate	Lease Type	Net Expenses	Size (SF)
--------	------------	------------	--------------	-----------

OFFERING SUMMARY

Available SF	14,000 SF
Lease Rate	\$16.50 SF/yr (NNN)
Net Expenses	3.75
Building Size	18,150 SF

DEMOGRAPHICS

Stats	Population	Avg. HH Income
1 Mile	6,785	\$54,161
3 Miles	34,351	\$58,910
5 Miles	84,591	\$54,246

For more information

Steve Slater

O: 517 487 9222

steveslater@naimidmichigan.com

Jim Vlahakis

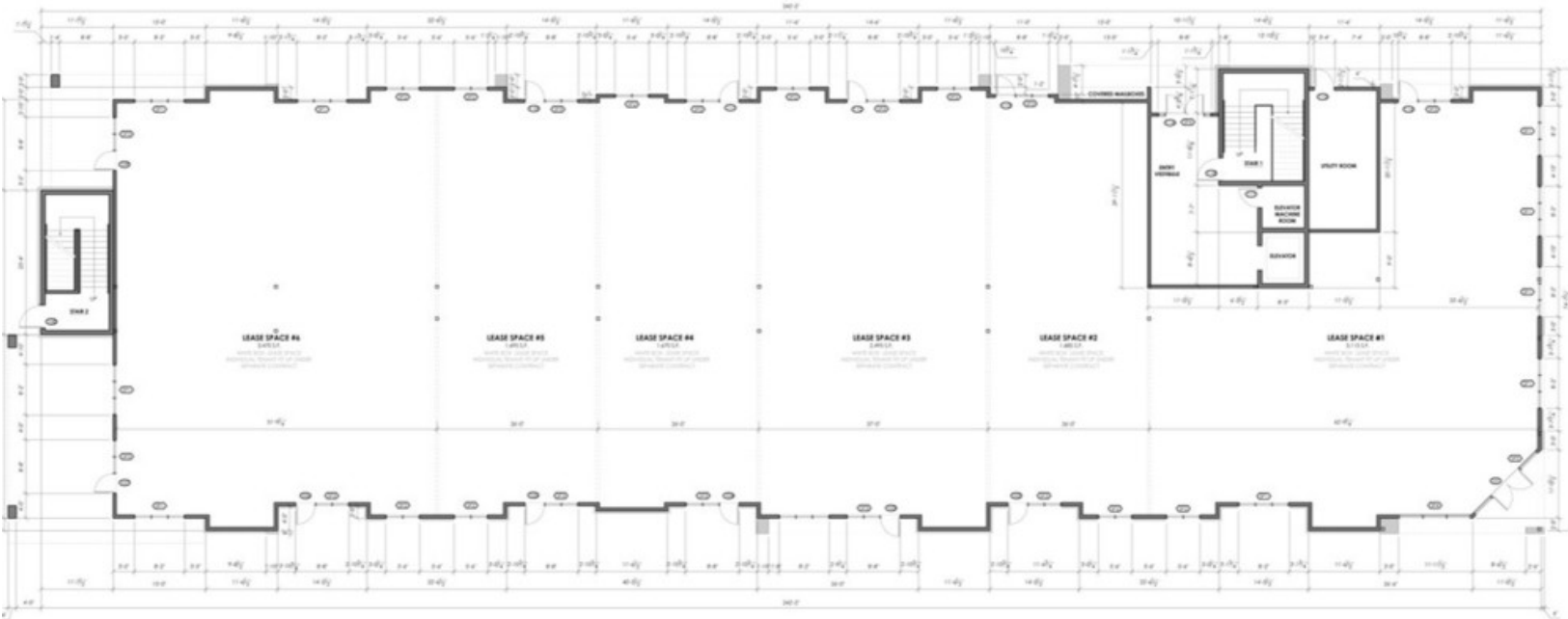
O: 517 487 9222

jvlahakis@naimidmichigan.com

For Lease

Retail | 14,000 SF

\$16.50 SF/yr



For Lease

Retail | 14,000 SF

\$16.50 SF/yr



For Lease

Retail | 14,000 SF

\$16.50 SF/yr

