



# 6102 Abbot Rd

East Lansing, Michigan 48823

## Property Highlights

- 4,276 sqft. of desirable E. Lansing office space
- Ideal floor plan with windowed offices
- Covered carport for 2 cars
- Convenient parking on site
- Easy access to US-127

## Offering Summary

Lease Rate:	\$17.00 SF/yr (MG)
Building Size:	4,276 SF
Available SF:	4,276 SF

## Demographics

	1 Mile	3 Miles	5 Miles
Total Households	4,055	26,854	53,854
Total Population	8,753	82,596	145,417
Average HH Income	\$64,694	\$58,149	\$56,469

## For More Information

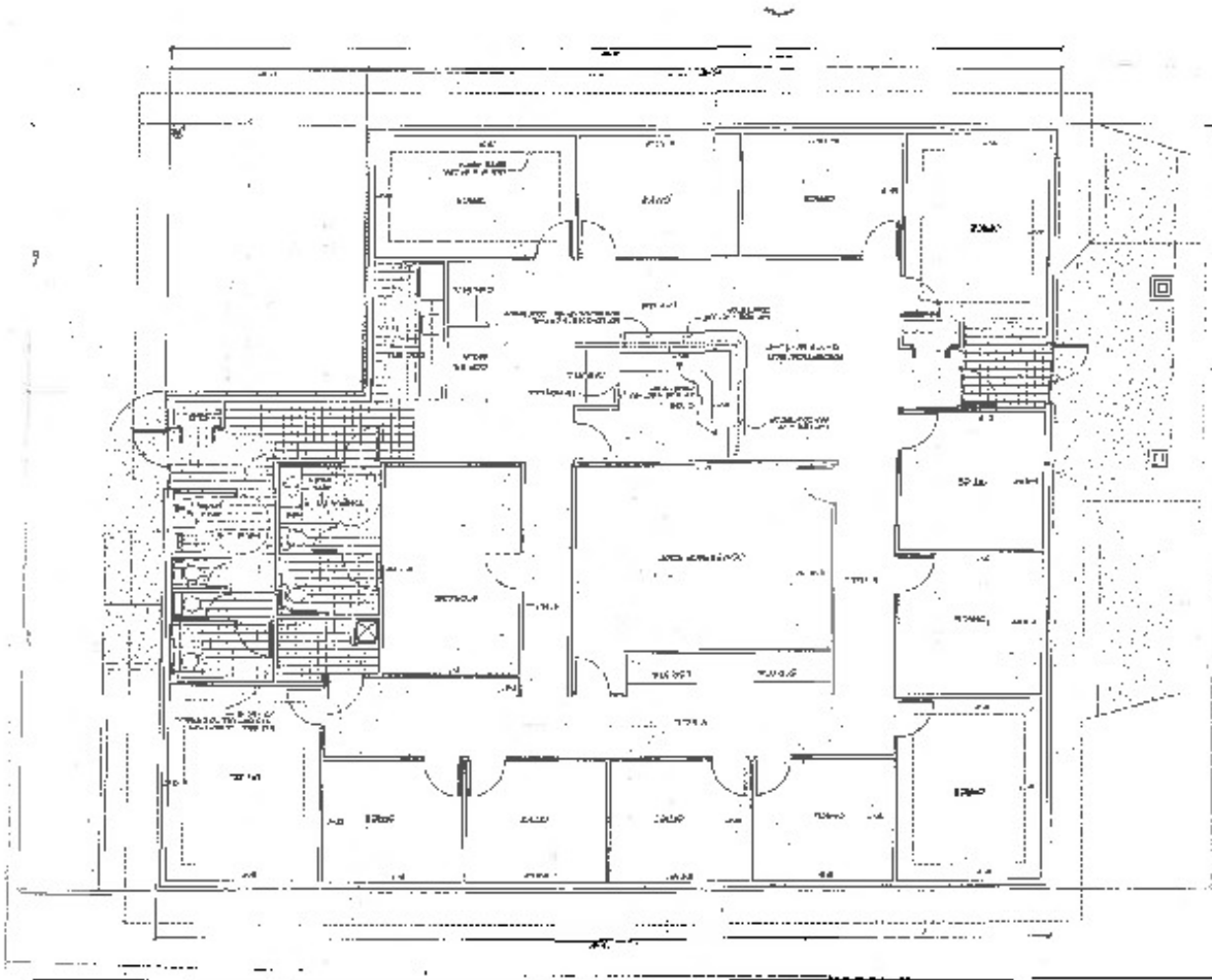
### Steve Slater

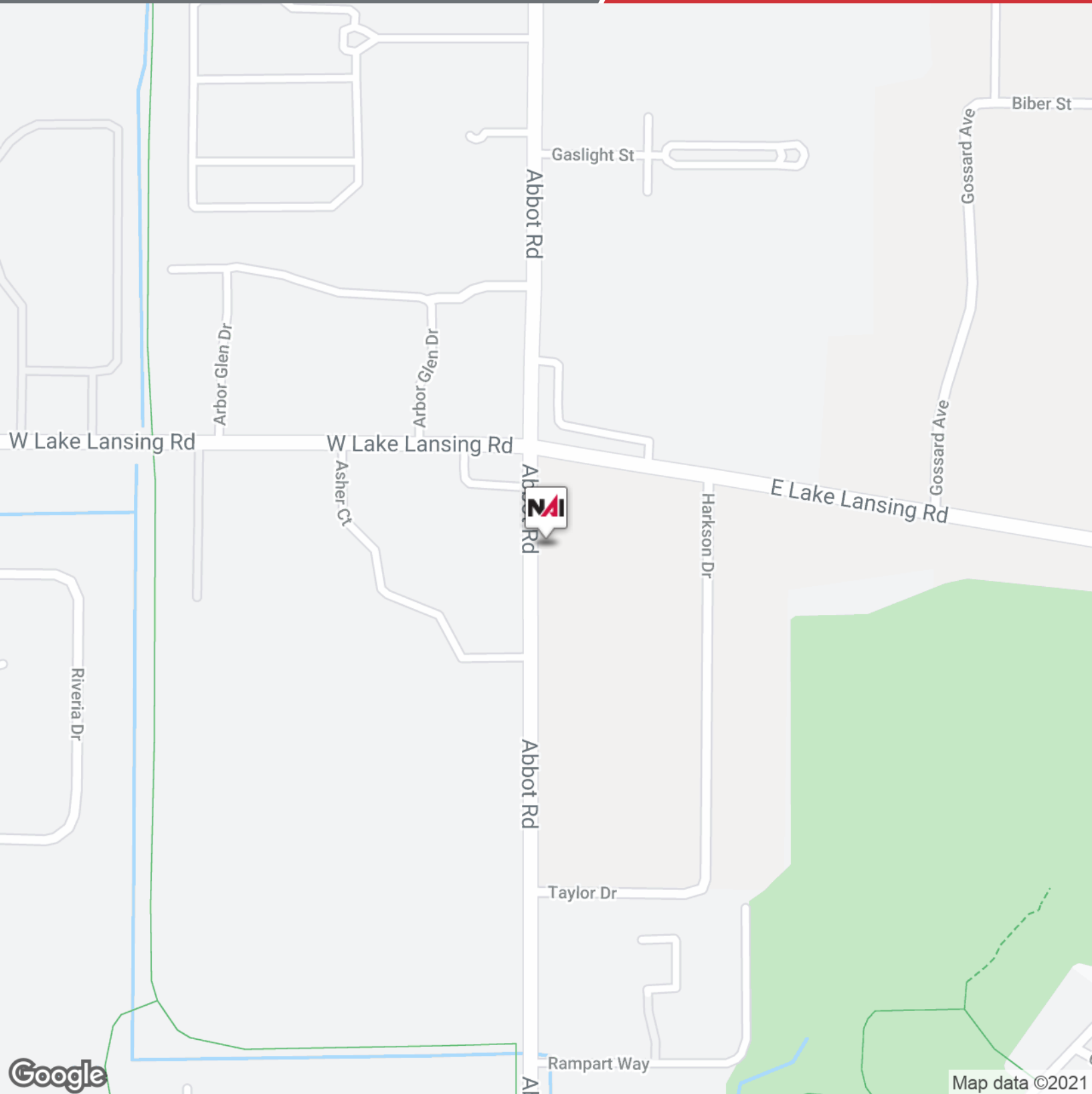
Associate Broker

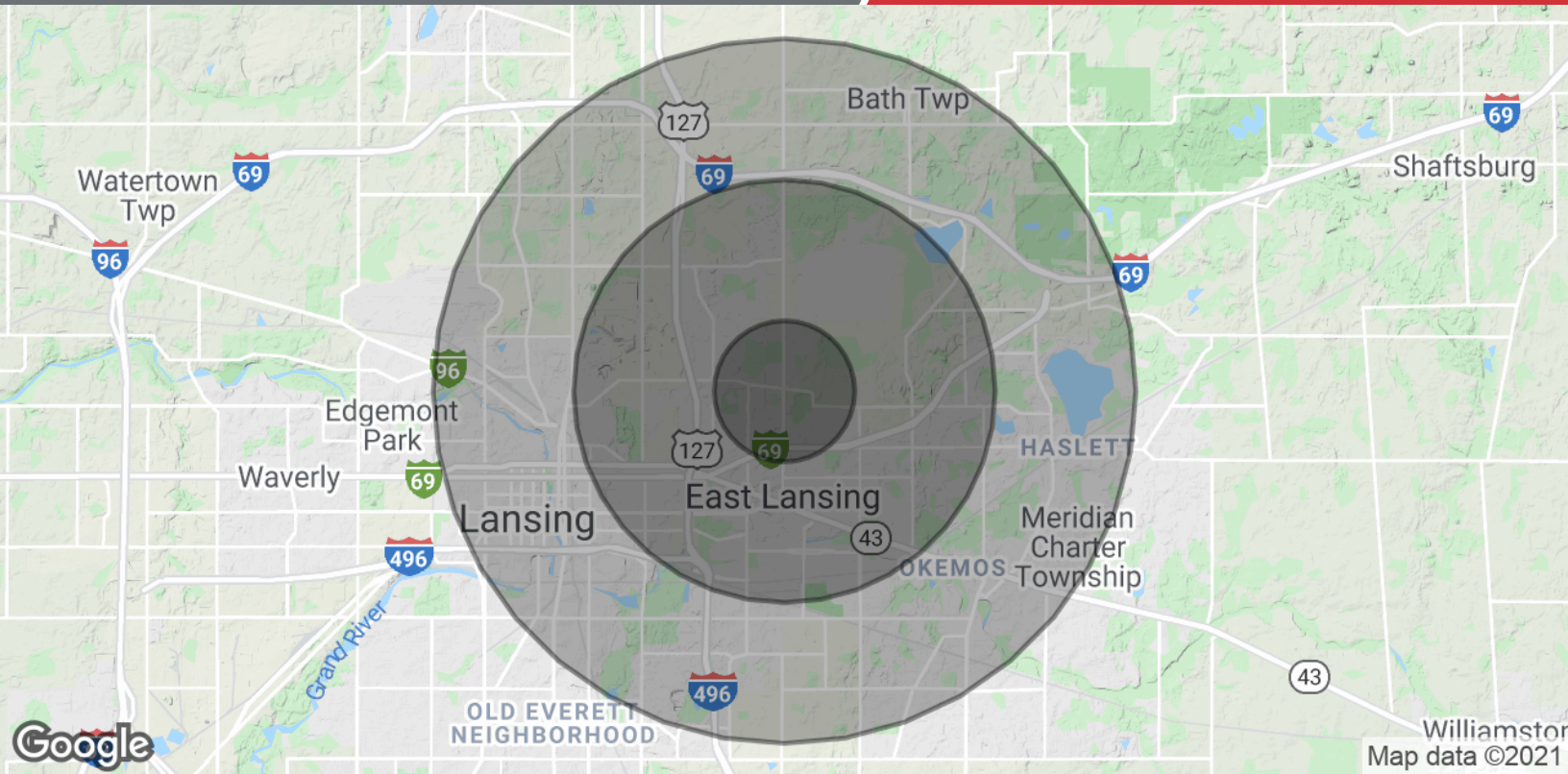
O: 517 487 9222 | C: 517 749 7914

steveslater@naimidmichigan.com









<b>Population</b>	<b>1 Mile</b>	<b>3 Miles</b>	<b>5 Miles</b>
Total Population	8,753	82,596	145,417
Average age	32.2	27.2	29.6
Average age (Male)	33.8	27.6	29.5
Average age (Female)	30.8	27.2	30.0
<b>Households &amp; Income</b>	<b>1 Mile</b>	<b>3 Miles</b>	<b>5 Miles</b>
Total households	4,055	26,854	53,854
# of persons per HH	2.2	3.1	2.7
Average HH income	\$64,694	\$58,149	\$56,469
Average house value	\$190,974	\$184,049	\$160,542

\* Demographic data derived from 2010 US Census