



# 11966 Sweetwater

Grand Ledge, Michigan 48837

## Property Highlights

- Adequate private office space
- Over 2000 square feet of open concept area that includes kitchenette
- Signage and visibility on West Saginaw Street
- Newly updated in 2018
- 3 bathrooms
- Large conference room
- Fiber internet to building.

## Offering Summary

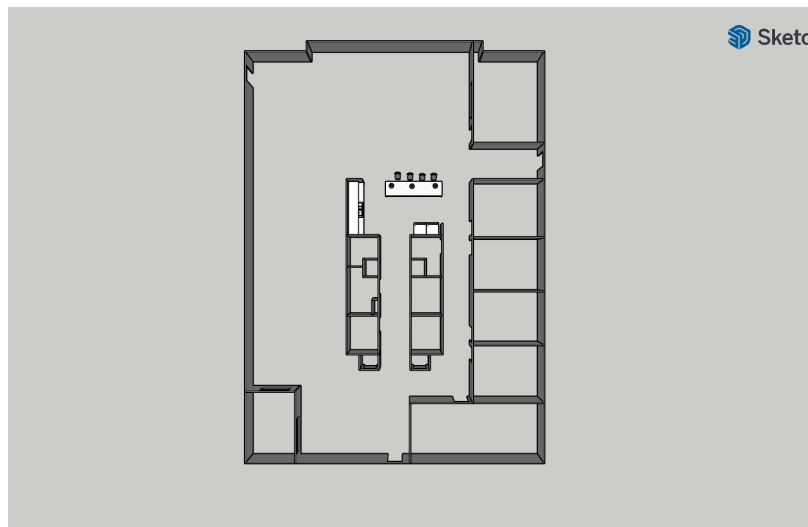
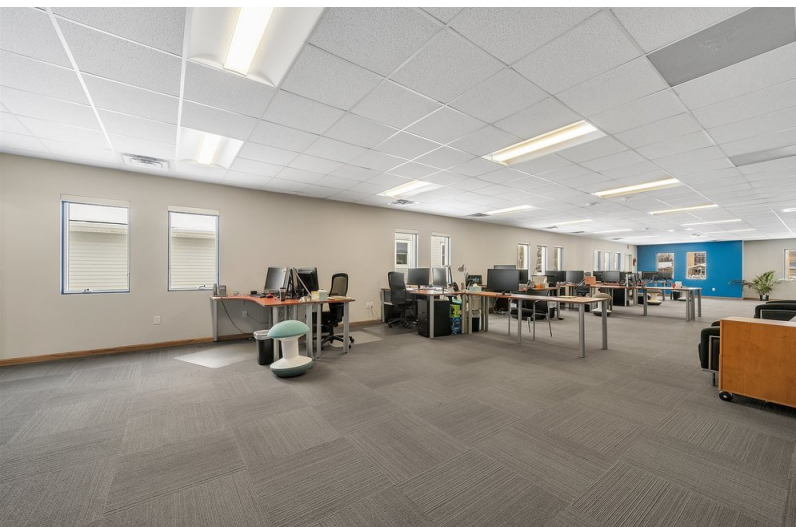
Sale Price:	Contact Agent
Building Size:	5,040 SF
Lot Size:	0.75 Acres

Demographics	1 Mile	5 Miles	10 Miles
Total Households	1,523	8,943	35,668
Total Population	3,385	22,095	84,800
Average HH Income	\$58,824	\$71,295	\$68,172

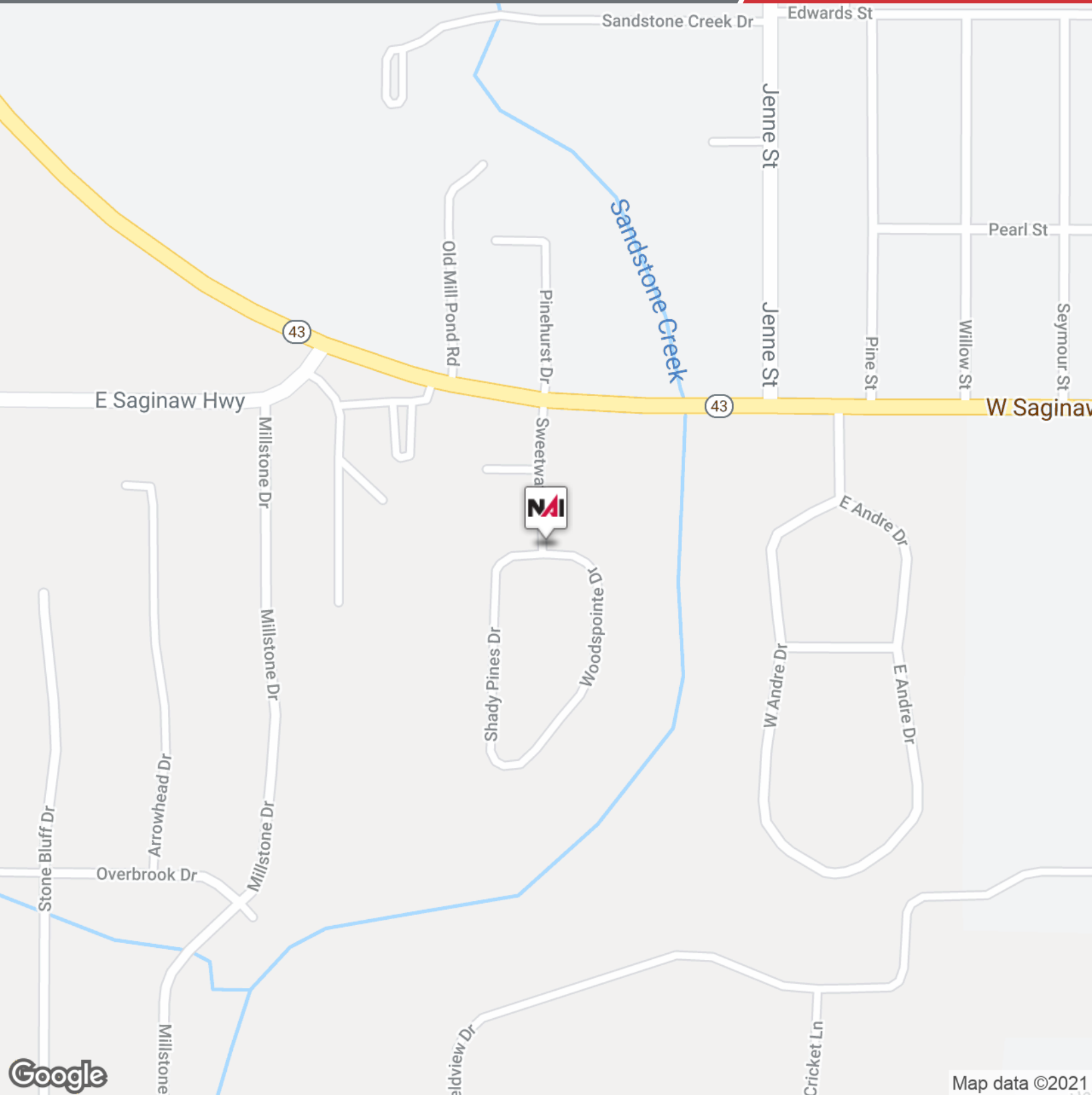
## For More Information

### Nick Vlahakis

Principal  
 O: 517 487 9222 | C: 517 881 6088  
 nvlahakis@naimidmichigan.com

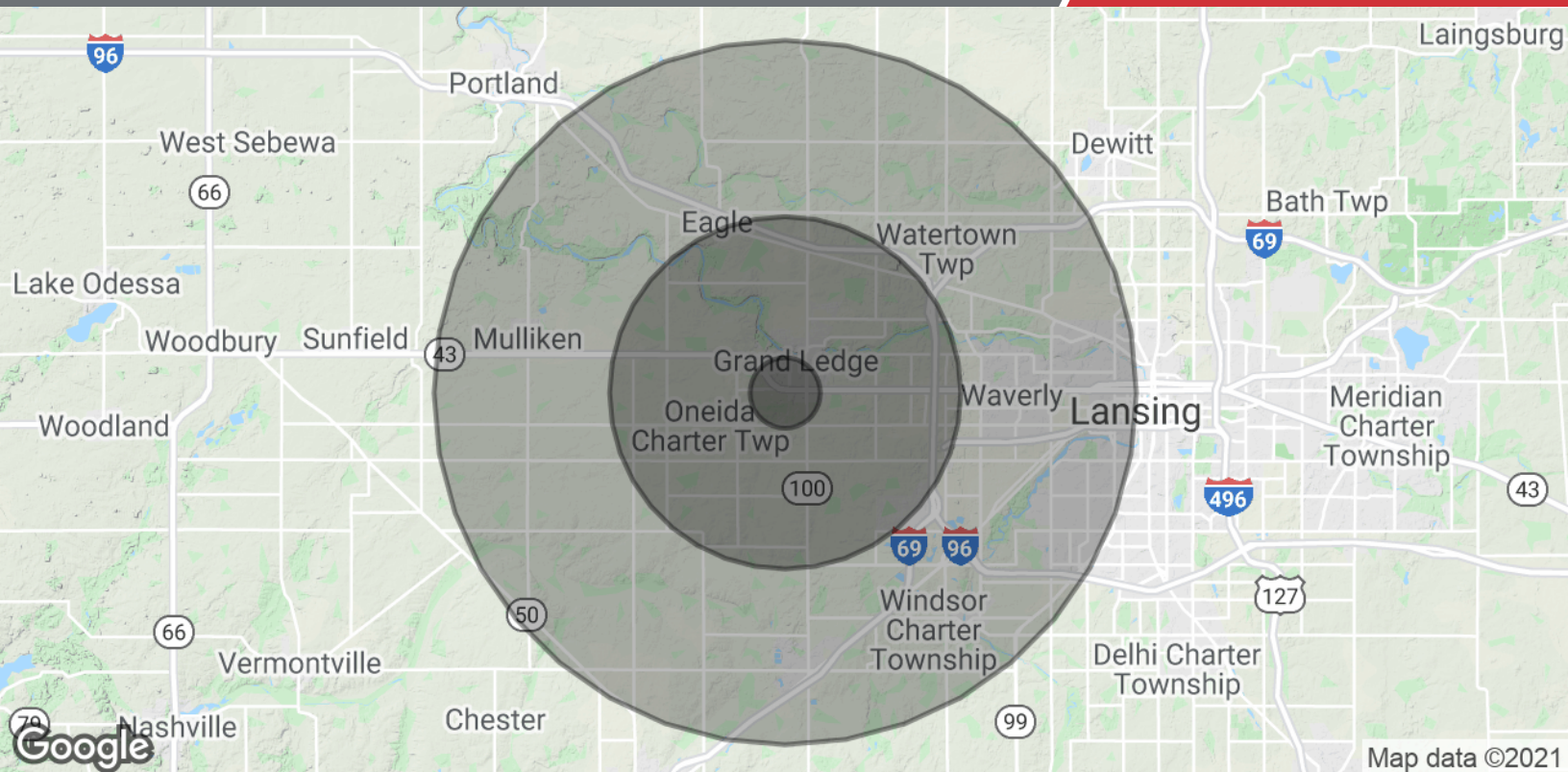


Sketo



NO WARRANTY OR REPRESENTATION, EXPRESS OR IMPLIED, IS MADE AS TO THE ACCURACY OF THE INFORMATION CONTAINED HEREIN, AND THE SAME IS SUBMITTED SUBJECT TO ERRORS, OMISSIONS, CHANGE OF PRICE, RENTAL OR OTHER CONDITIONS, PRIOR SALE, LEASE OR FINANCING, OR WITHDRAWAL WITHOUT NOTICE, AND OF ANY SPECIAL LISTING CONDITIONS IMPOSED BY OUR PRINCIPALS NO WARRANTIES OR REPRESENTATIONS ARE MADE AS TO THE CONDITION OF THE PROPERTY OR ANY HAZARDS CONTAINED THEREIN ARE INTENDED TO BE IMPLIED

2149 Jolly Road, Suite 200  
Okemos, MI 48864  
517 487 9222 tel  
naimidmichigan.com



## Population

	1 Mile	5 Miles	10 Miles
Total Population	3,385	22,095	84,800
Average age	41.1	41.4	40.1
Average age (Male)	41.8	41.9	38.8
Average age (Female)	40.1	40.4	41.1

## Households & Income

	1 Mile	5 Miles	10 Miles
Total households	1,523	8,943	35,668
# of persons per HH	2.2	2.5	2.4
Average HH income	\$58,824	\$71,295	\$68,172
Average house value	\$133,476	\$169,900	\$171,369

\* Demographic data derived from 2010 US Census