

UP TO 30,900 SF MEDICAL DEVELOPMENT



FOR LEASE



3600 Dunckel Road

Lansing, Michigan 48910

Property Highlights

- **New Development / Ownership Interest Possible**
- **Medical Office Building**
- **Approximately 10,300-30,900 SF**
- **Located Minutes from Michigan State University and the New McLaren Greater Lansing New Hospital Development**
- **Excellent Freeway Access of I-496**
- **Signage Potential and Visibility from I-496**

OFFERING SUMMARY

Lease Rate:	\$28.00 SF/yr (NNN)
Available SF:	30,900 SF
Lot Size:	
Building Size:	30,900 SF

DEMOGRAPHICS

	1 MILE	3 MILES	5 MILES
Total Households	1,844	16,679	65,816
Total Population	4,118	46,700	181,105
Average HH Income	\$34,487	\$48,270	\$53,162



Commercial Real Estate Services, Worldwide.

www.naifarbman.com

Kristi Lawton

Vice President | 248.351.4358
lawton@farbman.com

Jeff Cavazos

Senior Vice President | 248.613.6457
jcavazos@farbman.com

Jeff Shapiro GRI

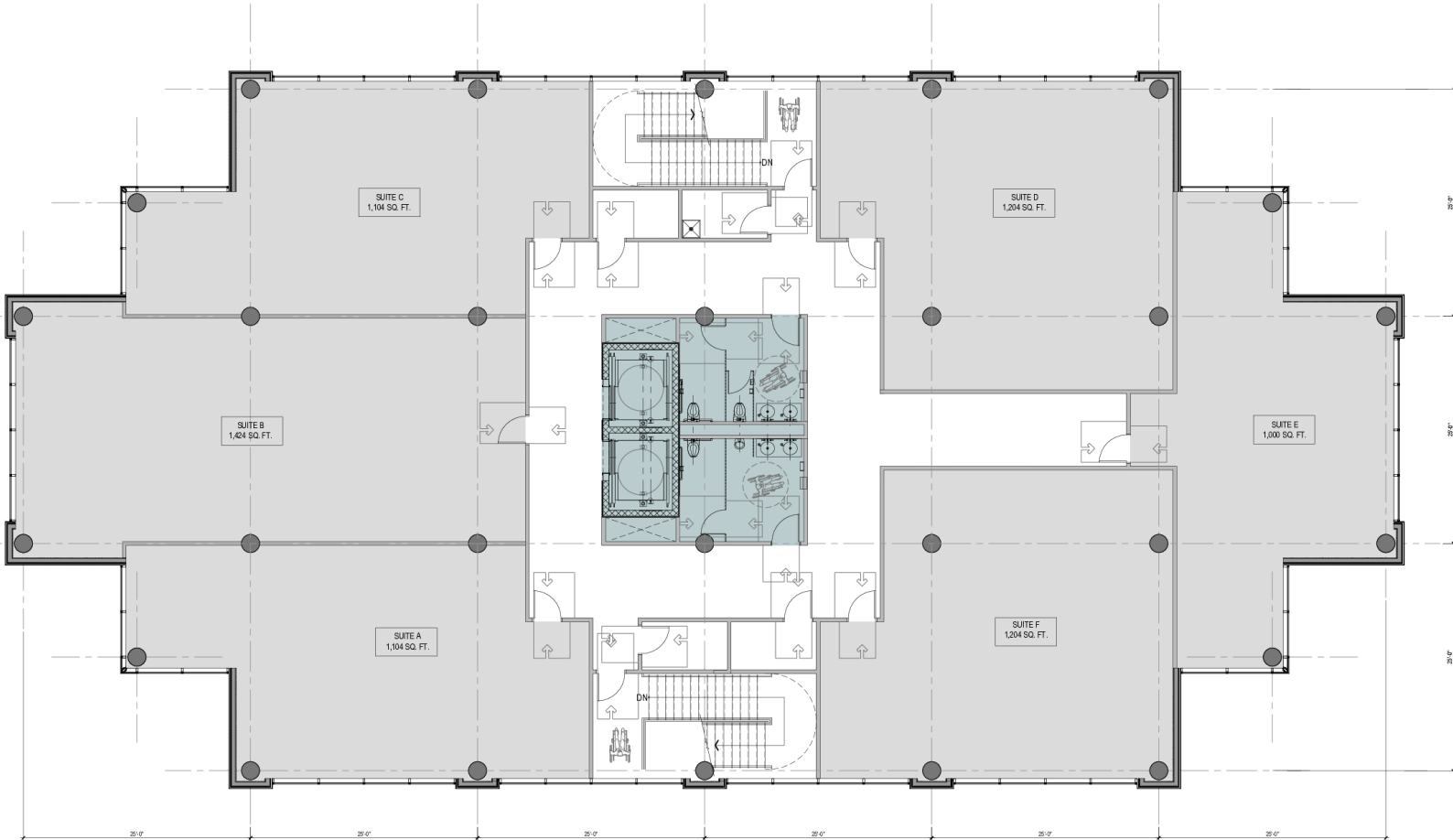
Senior Managing Associate Broker | 517.487.9222 | C: 517.881.4390
jeffshapiro@naimidmichigan.com

NO WARRANTY, EXPRESS OR IMPLIED, IS MADE AS TO THE ACCURACY OF THE INFORMATION CONTAINED HEREIN. THIS INFORMATION IS SUBMITTED SUBJECT TO ERRORS, OMISSIONS, CHANGE OF PRICE, RENTAL OR OTHER CONDITIONS, WITHDRAWAL WITHOUT NOTICE, AND IS SUBJECT TO ANY SPECIAL LISTING CONDITIONS IMPOSED BY OUR PRINCIPALS. COOPERATING BROKERS, BUYERS, TENANTS AND OTHER PARTIES WHO RECEIVE THIS DOCUMENT SHOULD NOT RELY ON IT, BUT SHOULD USE IT AS A STARTING POINT OF ANALYSIS, AND SHOULD INDEPENDENTLY CONFIRM THE ACCURACY OF THE INFORMATION CONTAINED HEREIN THROUGH A DUE DILIGENCE REVIEW OF THE BOOKS, RECORDS, FILES AND DOCUMENTS THAT CONSTITUTE RELIABLE SOURCES OF THE INFORMATION DESCRIBED HEREIN. LOGOS ARE FOR IDENTIFICATION PURPOSES ONLY AND MAY BE TRADEMARKS OF THEIR RESPECTIVE COMPANIES. NAI CAPITAL, INC. CA BRE LIC. #01990696.

UP TO 30,900 SF MEDICAL DEVELOPMENT



FOR LEASE



Commercial Real Estate Services, Worldwide.
www.naifarbman.com

Kristi Lawton
Vice President | 248.351.4358
lawton@farbman.com

Jeff Cavazos
Senior Vice President | 248.613.6457
jcavazos@farbman.com

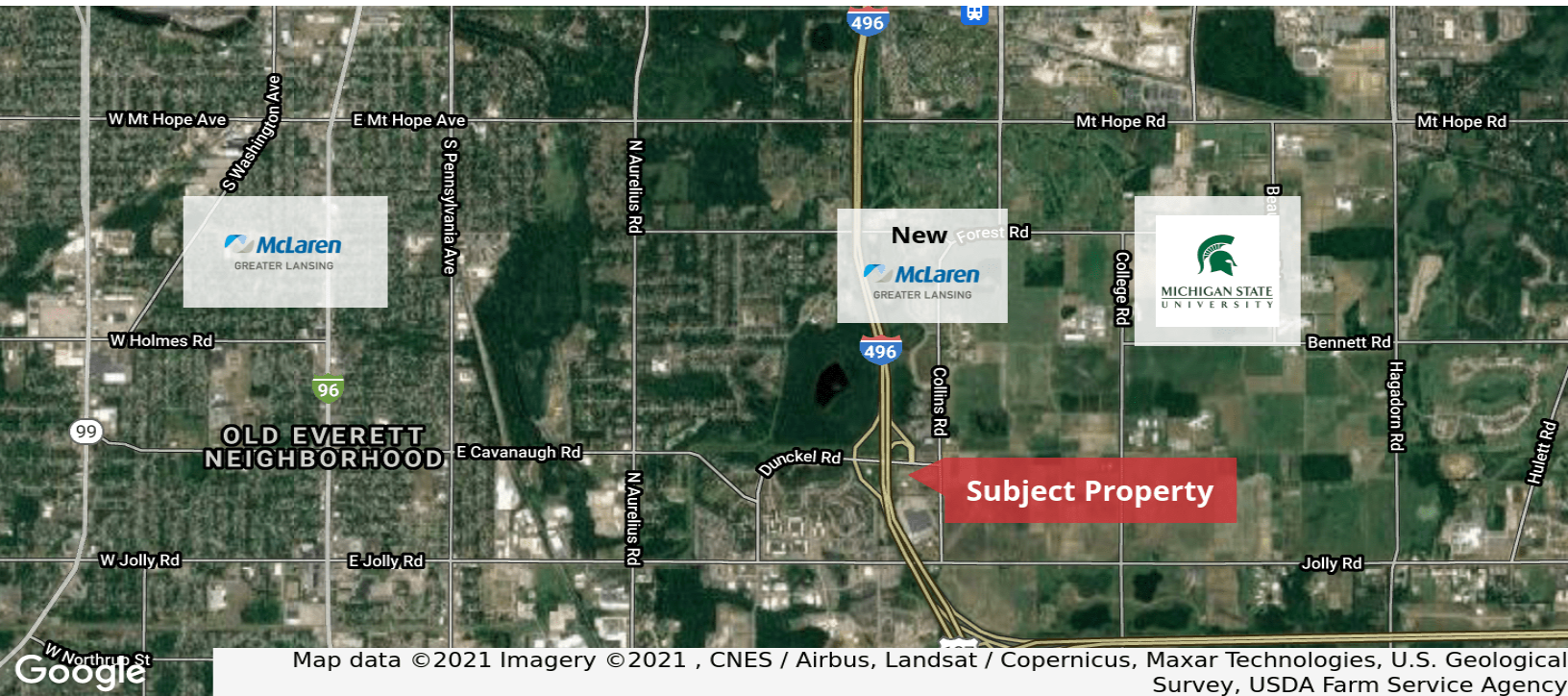
Jeff Shapiro GRI
Senior Managing Associate Broker | 517.487.9222 | C: 517.881.4390
jeffshapiro@naimidmichigan.com

NO WARRANTY, EXPRESS OR IMPLIED, IS MADE AS TO THE ACCURACY OF THE INFORMATION CONTAINED HEREIN. THIS INFORMATION IS SUBMITTED SUBJECT TO ERRORS, OMISSIONS, CHANGE OF PRICE, RENTAL OR OTHER CONDITIONS, WITHDRAWAL WITHOUT NOTICE, AND IS SUBJECT TO ANY SPECIAL LISTING CONDITIONS IMPOSED BY OUR PRINCIPALS. COOPERATING BROKERS, BUYERS, TENANTS AND OTHER PARTIES WHO RECEIVE THIS DOCUMENT SHOULD NOT RELY ON IT, BUT SHOULD USE IT AS A STARTING POINT OF ANALYSIS, AND SHOULD INDEPENDENTLY CONFIRM THE ACCURACY OF THE INFORMATION CONTAINED HEREIN THROUGH A DUE DILIGENCE REVIEW OF THE BOOKS, RECORDS, FILES AND DOCUMENTS THAT CONSTITUTE RELIABLE SOURCES OF THE INFORMATION DESCRIBED HEREIN. LOGOS ARE FOR IDENTIFICATION PURPOSES ONLY AND MAY BE TRADEMARKS OF THEIR RESPECTIVE COMPANIES. NAI CAPITAL, INC. CA BRE LIC. #01990696.

UP TO 30,900 SF MEDICAL DEVELOPMENT



FOR LEASE



Commercial Real Estate Services, Worldwide.
www.naifarbman.com

Kristi Lawton
Vice President | 248.351.4358
lawton@farbman.com

Jeff Cavazos
Senior Vice President | 248.613.6457
jcavazos@farbman.com

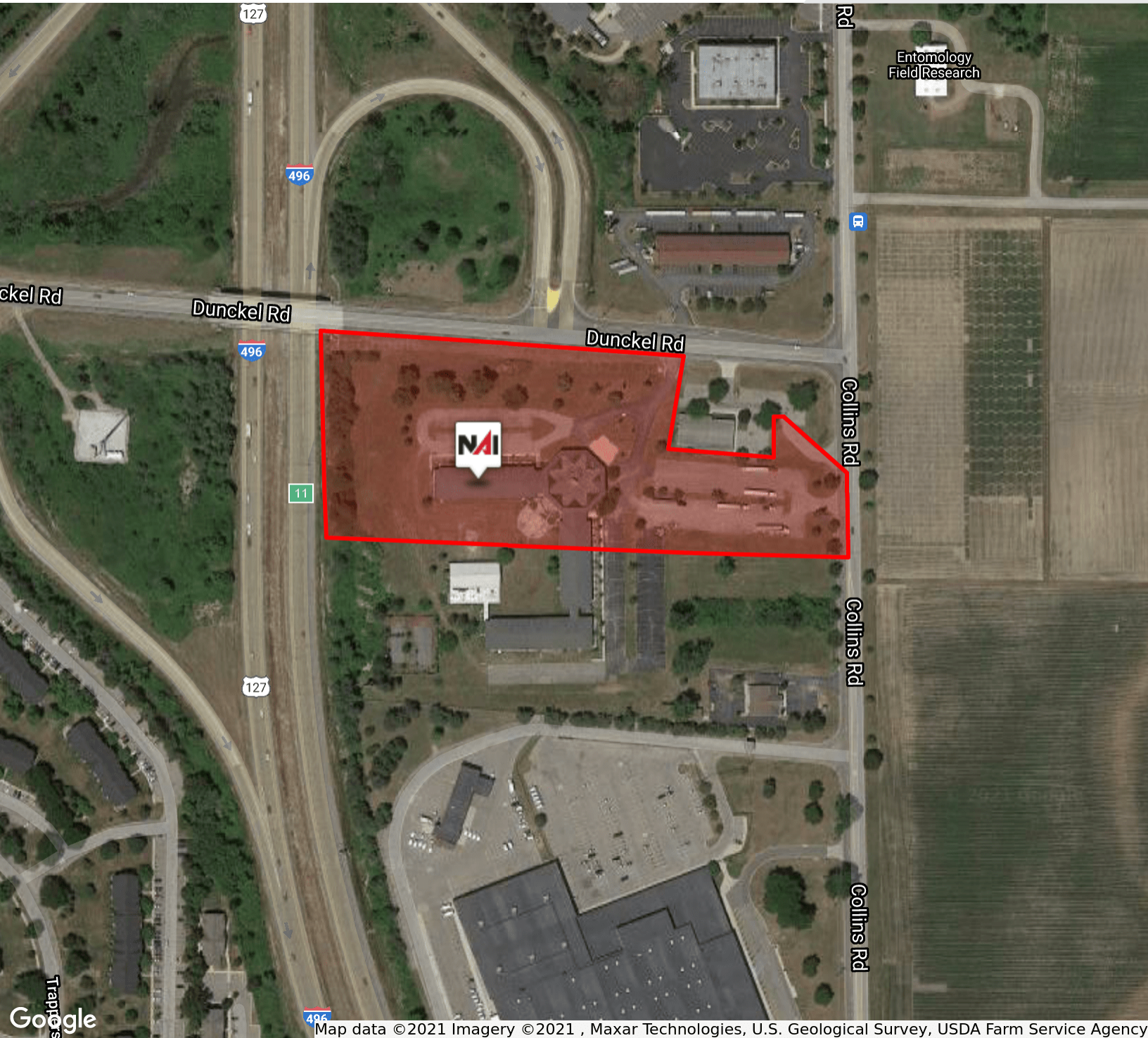
Jeff Shapiro GRI
Senior Managing Associate Broker | 517.487.9222 | C: 517.881.4390
jeffshapiro@naimidmichigan.com

NO WARRANTY, EXPRESS OR IMPLIED, IS MADE AS TO THE ACCURACY OF THE INFORMATION CONTAINED HEREIN. THIS INFORMATION IS SUBMITTED SUBJECT TO ERRORS, OMISSIONS, CHANGE OF PRICE, RENTAL OR OTHER CONDITIONS, WITHDRAWAL WITHOUT NOTICE, AND IS SUBJECT TO ANY SPECIAL LISTING CONDITIONS IMPOSED BY OUR PRINCIPALS. COOPERATING BROKERS, BUYERS, TENANTS AND OTHER PARTIES WHO RECEIVE THIS DOCUMENT SHOULD NOT RELY ON IT, BUT SHOULD USE IT AS A STARTING POINT OF ANALYSIS, AND SHOULD INDEPENDENTLY CONFIRM THE ACCURACY OF THE INFORMATION CONTAINED HEREIN THROUGH A DUE DILIGENCE REVIEW OF THE BOOKS, RECORDS, FILES AND DOCUMENTS THAT CONSTITUTE RELIABLE SOURCES OF THE INFORMATION DESCRIBED HEREIN. LOGOS ARE FOR IDENTIFICATION PURPOSES ONLY AND MAY BE TRADEMARKS OF THEIR RESPECTIVE COMPANIES. NAI CAPITAL, INC. CA BRE LIC. #01890696.

UP TO 30,900 SF MEDICAL DEVELOPMENT



FOR LEASE



Map data © 2021 Imagery © 2021, Maxar Technologies, U.S. Geological Survey, USDA Farm Service Agency



Commercial Real Estate Services, Worldwide.
www.naifarbman.com

Kristi Lawton
Vice President | 248.351.4358
lawton@farbman.com

Jeff Cavazos
Senior Vice President | 248.613.6457
jcavazos@farbman.com

Jeff Shapiro GRI
Senior Managing Associate Broker | 517.487.9222 | C: 517.881.4390
jeffshapiro@naimidmichigan.com

NO WARRANTY, EXPRESS OR IMPLIED, IS MADE AS TO THE ACCURACY OF THE INFORMATION CONTAINED HEREIN. THIS INFORMATION IS SUBMITTED SUBJECT TO ERRORS, OMISSIONS, CHANGE OF PRICE, RENTAL OR OTHER CONDITIONS, WITHDRAWAL WITHOUT NOTICE, AND IS SUBJECT TO ANY SPECIAL LISTING CONDITIONS IMPOSED BY OUR PRINCIPALS. COOPERATING BROKERS, BUYERS, TENANTS AND OTHER PARTIES WHO RECEIVE THIS DOCUMENT SHOULD NOT RELY ON IT, BUT SHOULD USE IT AS A STARTING POINT OF ANALYSIS, AND SHOULD INDEPENDENTLY CONFIRM THE ACCURACY OF THE INFORMATION CONTAINED HEREIN THROUGH A DUE DILIGENCE REVIEW OF THE BOOKS, RECORDS, FILES AND DOCUMENTS THAT CONSTITUTE RELIABLE SOURCES OF THE INFORMATION DESCRIBED HEREIN. LOGOS ARE FOR IDENTIFICATION PURPOSES ONLY AND MAY BE TRADEMARKS OF THEIR RESPECTIVE COMPANIES. NAI CAPITAL, INC. CA BRE LIC. #01990696.