



For Lease

Office | 2,256 - 3,058 SF

\$15.50 SF/yr

139 W Lake Lansing Road

East Lansing, Michigan 48823

Property Highlights

- 16,720 SF Class A Office Building
- Suites Available:
- Suite 200 – 3,058 SF (\$15.50 PSF)
- Suite 210 – 2,256 SF (\$16.00 PSF)
- Plus utilities and janitorial
- Can accommodate up to 5,862 SF
- Bright and open lobby with skylights
- Great signage on W. Lake Lansing Rd
- Located near the US-127/Lake Lansing Rd interchange

Property Description

Two suites available in Class A office building.

OFFERING SUMMARY

Available SF	2,256 - 3,058 SF
Lease Rate	\$15.50 SF/yr (Gross; MG)
Building Size	16,720 SF

DEMOGRAPHICS

Stats	Population	Avg. HH Income
1 Mile	8,852	\$63,669
3 Miles	84,163	\$57,916
5 Miles	144,887	\$56,608

For more information

Jeff Shapiro GRI, Senior Managing Associate Broker

O: 517 487 9222 | C: 517 881 4390
jeffshapiro@naimidmichigan.com

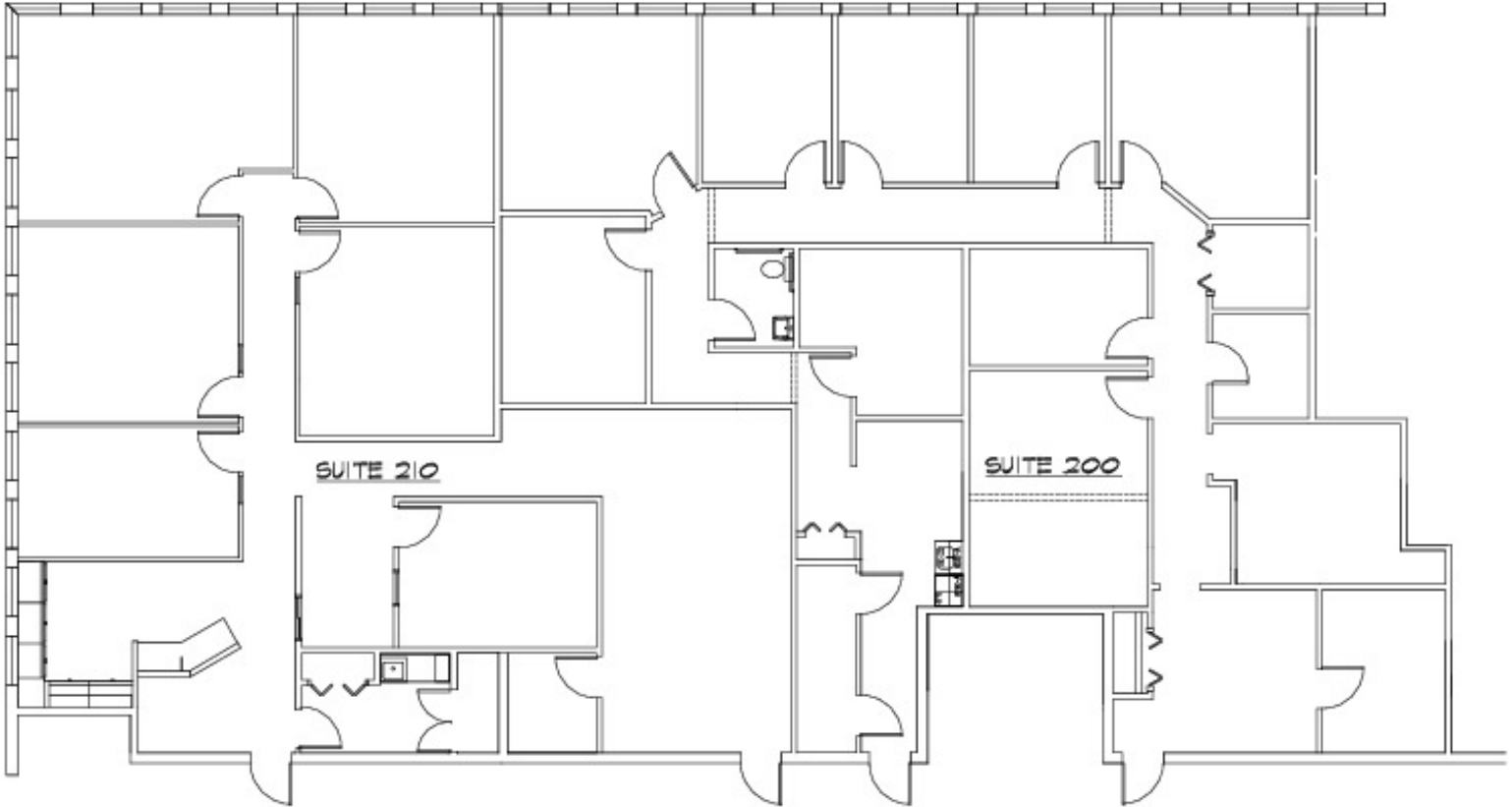
Dave Robinson, Associate Broker

O: 517 487 9222 | C: 517 599 6846
drobinson@naimidmichigan.com

For Lease

Office | 2,256 - 3,058 SF

\$15.50 SF/yr



FLOOR PLAN



1/32" = 1'-0"

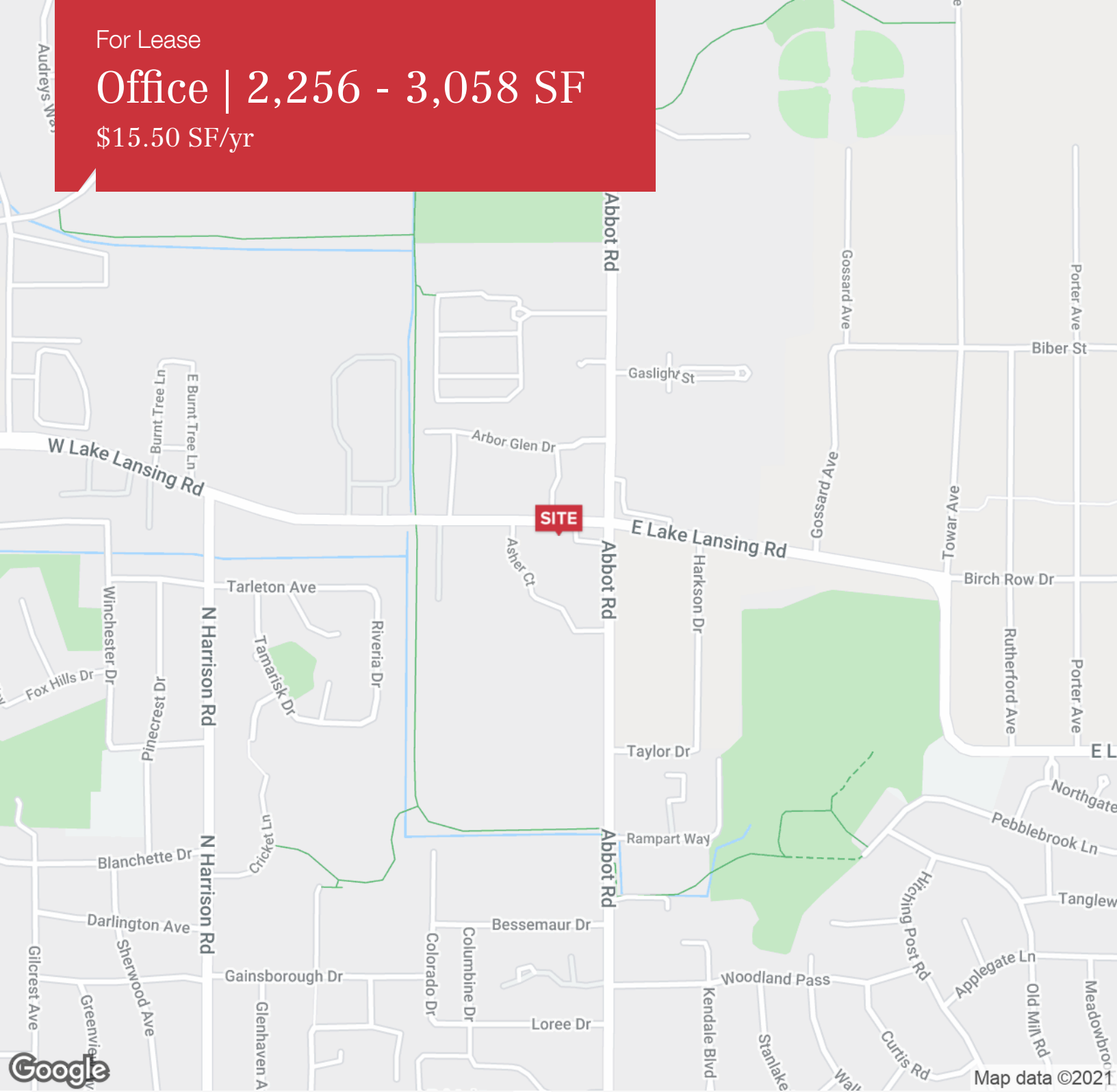
139 WEST LAKE LANSING ROAD
08.110

Suite 200

For Lease

Office | 2,256 - 3,058 SF

\$15.50 SF/yr



LOCATION DESCRIPTION

On W. Lake Lansing Rd, just west of Abbott Rd