

2,773 SF - SUITE 515 OFFICE SPACE



FOR LEASE



CONVENIENT LOCATION IN NEW CENTER WITH GREAT WINDOW LINES!

New Center One

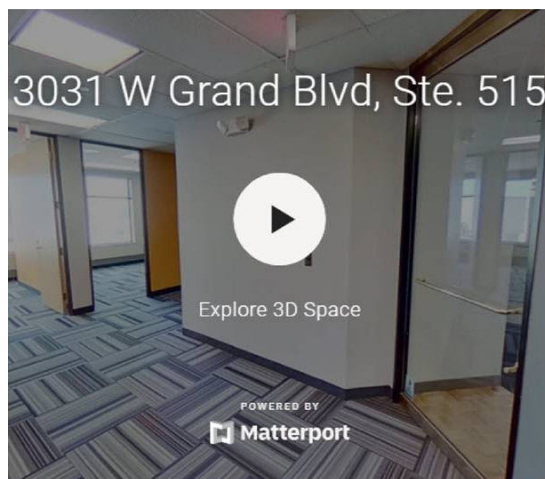
3031 W Grand Blvd, Detroit, Michigan 48202

Property Highlights

- \$19.50/SF + Electric
- 2,773 SF
- Abundant Parking
- Easy Access to Freeways
- Tenant Improvement Package available on 5 year+ Term
- Professional On-Site Building Management
- 24-Hour Building Security and Accessibility
- Casual Dining, Banks and Retail Options in Building and Neighborhood

OFFERING SUMMARY

Lease Rate:	\$19.50 SF/yr (plus Electric)
Available SF:	2,773 SF
Building Size:	496,208 SF



Commercial Real Estate Services, Worldwide.

www.naifarbman.com

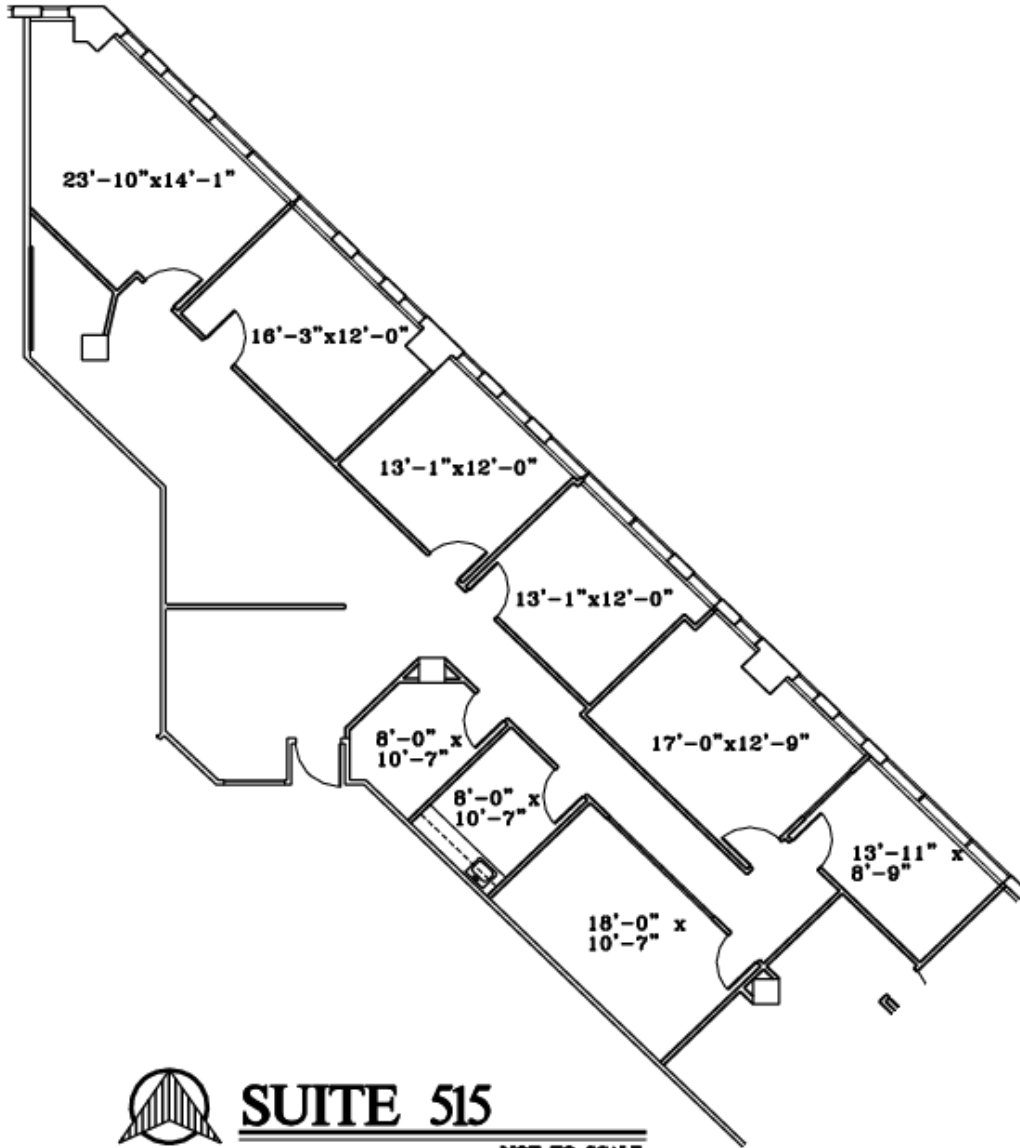
Christina DiBartolomeo
Vice President | 248.351.4394
dibartolomeo@farbman.com

NO WARRANTY, EXPRESS OR IMPLIED, IS MADE AS TO THE ACCURACY OF THE INFORMATION CONTAINED HEREIN. THIS INFORMATION IS SUBMITTED SUBJECT TO ERRORS, OMISSIONS, CHANGE OF PRICE, RENTAL OR OTHER CONDITIONS, WITHDRAWAL WITHOUT NOTICE, AND IS SUBJECT TO ANY SPECIAL LISTING CONDITIONS IMPOSED BY OUR PRINCIPALS, COOPERATING BROKERS, BUYERS, TENANTS AND OTHER PARTIES WHO RECEIVE THIS DOCUMENT SHOULD NOT RELY ON IT, BUT SHOULD USE IT AS A STARTING POINT OF ANALYSIS, AND SHOULD INDEPENDENTLY CONFIRM THE ACCURACY OF THE INFORMATION CONTAINED HEREIN THROUGH A DUE DILIGENCE REVIEW OF THE BOOKS, RECORDS, FILES AND DOCUMENTS THAT CONSTITUTE RELIABLE SOURCES OF THE INFORMATION DESCRIBED HEREIN. LOGOS ARE FOR IDENTIFICATION PURPOSES ONLY AND MAY BE TRADEMARKS OF THEIR RESPECTIVE COMPANIES. NAI CAPITAL, INC. CA BRE LIC. #01990698.

2,773 SF - SUITE 515 OFFICE SPACE



FOR LEASE



SUITE 515

NOT TO SCALE

NOTE: ALL ROOM SIZES ARE APPROXIMATE

2,773 SQ. FT.



Commercial Real Estate Services, Worldwide.
www.naifarbman.com

Christina DiBartolomeo
Vice President | 248.351.4394
dibartolomeo@farbman.com

NO WARRANTY, EXPRESS OR IMPLIED, IS MADE AS TO THE ACCURACY OF THE INFORMATION CONTAINED HEREIN. THIS INFORMATION IS SUBMITTED SUBJECT TO ERRORS, OMISSIONS, CHANGE OF PRICE, RENTAL OR OTHER CONDITIONS, WITHDRAWAL WITHOUT NOTICE, AND IS SUBJECT TO ANY SPECIAL LISTING CONDITIONS IMPOSED BY OUR PRINCIPALS, COOPERATING BROKERS, BUYERS, TENANTS AND OTHER PARTIES WHO RECEIVE THIS DOCUMENT SHOULD NOT RELY ON IT, BUT SHOULD USE IT AS A STARTING POINT OF ANALYSIS, AND SHOULD INDEPENDENTLY CONFIRM THE ACCURACY OF THE INFORMATION CONTAINED HEREIN THROUGH A DUE DILIGENCE REVIEW OF THE BOOKS, RECORDS, FILES AND DOCUMENTS THAT CONSTITUTE RELIABLE SOURCES OF THE INFORMATION DESCRIBED HEREIN. LOGOS ARE FOR IDENTIFICATION PURPOSES ONLY AND MAY BE TRADEMARKS OF THEIR RESPECTIVE COMPANIES. NAI CAPITAL, INC. CA BRE LIC. #01990696.