

# UP TO 40,000 SF AVAILABLE REGIONAL MALL



## FOR LEASE

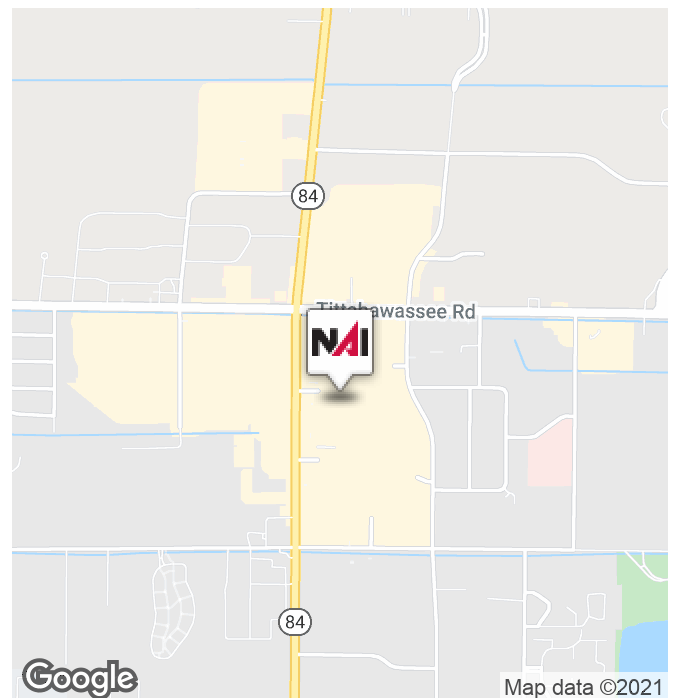


## 4787 Fashion Square Mall

Saginaw, Michigan 48604

### Property Highlights

- Under New Management
- Retail Space Available
- Anchored by JCPenney and Macy's
- Over 100 Retailers and Eateries
- Up to 40,000 SF Available For Lease
- Located in the Heart of the Region's Retail Activity
- Major Near By Retailers: Walmart, Target, Meijer, Kohl's, Dick's Sporting Goods, TJ Maxx and Many More
- Fully Equipped Full Service Restaurant and Hair Salon
- Additional SF and Land Opportunities Available



**NAI Farbman**

Commercial Real Estate Services, Worldwide.  
www.naifarbman.com

**Carrie Weiss**  
Sales and Leasing Associate | 248.351.6328  
weiss@farbman.com

**Tracy DeVine**  
Principal Associate Broker | 313.580.6224  
tdevine@genesistc.net

**Cheryl Greene**  
Senior Vice President | 586.707.8484  
cgreene@genesistc.net

NO WARRANTY, EXPRESS OR IMPLIED, IS MADE AS TO THE ACCURACY OF THE INFORMATION CONTAINED HEREIN. THIS INFORMATION IS SUBMITTED SUBJECT TO ERRORS, OMISSIONS, CHANGE OF PRICE, RENTAL OR OTHER CONDITIONS, WITHDRAWAL WITHOUT NOTICE, AND IS SUBJECT TO ANY SPECIAL LISTING CONDITIONS IMPOSED BY OUR PRINCIPALS, COOPERATING BROKERS, BUYERS, TENANTS AND OTHER PARTIES WHO RECEIVE THIS DOCUMENT SHOULD NOT RELY ON IT, BUT SHOULD USE IT AS A STARTING POINT OF ANALYSIS, AND SHOULD INDEPENDENTLY CONFIRM THE ACCURACY OF THE INFORMATION CONTAINED HEREIN THROUGH A DUE DILIGENCE REVIEW OF THE BOOKS, RECORDS, FILES AND DOCUMENTS THAT CONSTITUTE RELIABLE SOURCES OF THE INFORMATION DESCRIBED HEREIN. LOGOS ARE FOR IDENTIFICATION PURPOSES ONLY AND MAY BE TRADEMARKS OF THEIR RESPECTIVE COMPANIES. NAI CAPITAL, INC. CA BRE LIC. #019900696.

# UP TO 40,000 SF AVAILABLE REGIONAL MALL



## FOR LEASE



C#300



C#300



C#332



General



C#316



D#435



D#435



D#435



B#202

# UP TO 40,000 SF AVAILABLE REGIONAL MALL



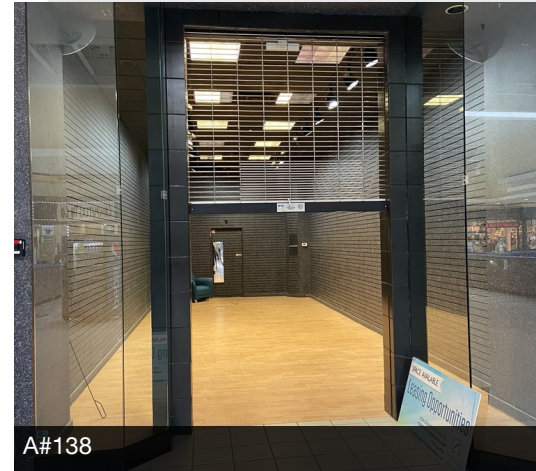
## FOR LEASE



A#140



A#138 Former Lids



A#138



A#136



D#428



D#428



General



General



A#116

# UP TO 40,000 SF AVAILABLE REGIONAL MALL



## FOR LEASE



D#404



Food Court



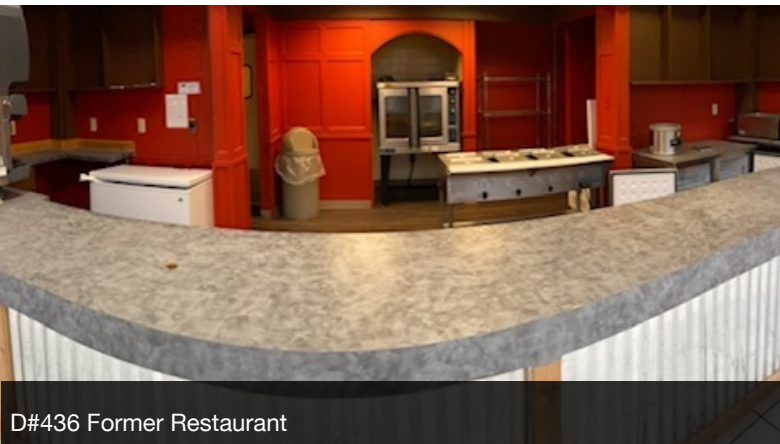
Food Court



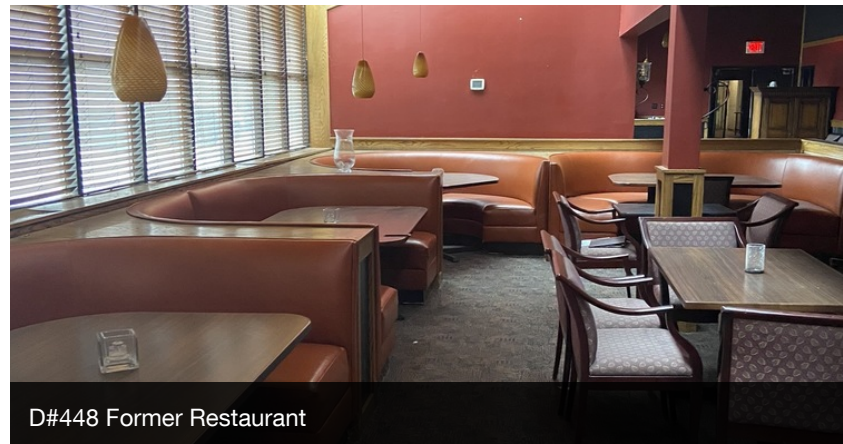
D#436



D#438



D#436 Former Restaurant



D#448 Former Restaurant



Commercial Real Estate Services, Worldwide.  
www.naifarbman.com

**Carrie Weiss**  
Sales and Leasing Associate | 248.351.6328  
weiss@farbman.com

**Tracy DeVine**  
Principal Associate Broker | 313.580.6224  
tdevine@genesistc.net

**Cheryl Greene**  
Senior Vice President | 586.707.8484  
cgreene@genesistc.net

NO WARRANTY, EXPRESS OR IMPLIED, IS MADE AS TO THE ACCURACY OF THE INFORMATION CONTAINED HEREIN. THIS INFORMATION IS SUBMITTED SUBJECT TO ERRORS, OMISSIONS, CHANGE OF PRICE, RENTAL OR OTHER CONDITIONS, WITHDRAWAL WITHOUT NOTICE, AND IS SUBJECT TO ANY SPECIAL LISTING CONDITIONS IMPOSED BY OUR PRINCIPALS, COOPERATING BROKERS, BUYERS, TENANTS AND OTHER PARTIES WHO RECEIVE THIS DOCUMENT. SHOULD NOT RELY ON IT, BUT SHOULD USE IT AS A STARTING POINT OF ANALYSIS, AND SHOULD INDEPENDENTLY CONFIRM THE ACCURACY OF THE INFORMATION CONTAINED HEREIN THROUGH A DUE DILIGENCE REVIEW OF THE BOOKS, RECORDS, FILES AND DOCUMENTS THAT CONSTITUTE RELIABLE SOURCES OF THE INFORMATION DESCRIBED HEREIN. LOGOS ARE FOR IDENTIFICATION PURPOSES ONLY AND MAY BE TRADEMARKS OF THEIR RESPECTIVE COMPANIES. NAI CAPITAL, INC. CA BRE LIC. #01990696.

# UP TO 40,000 SF AVAILABLE REGIONAL MALL



## FOR LEASE



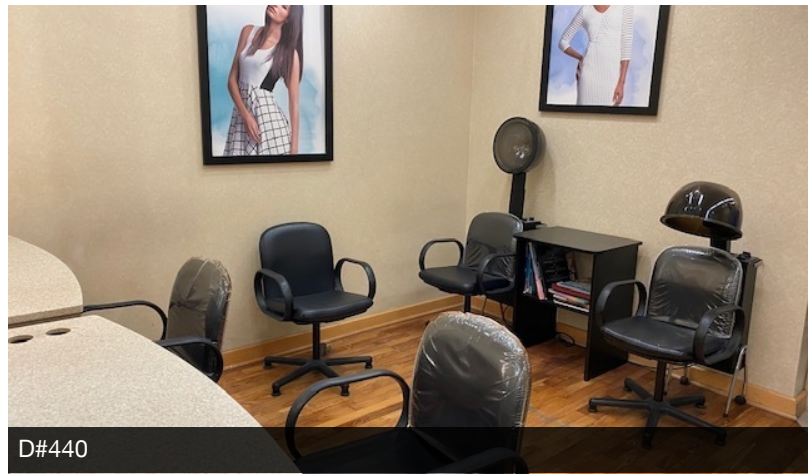
D#440



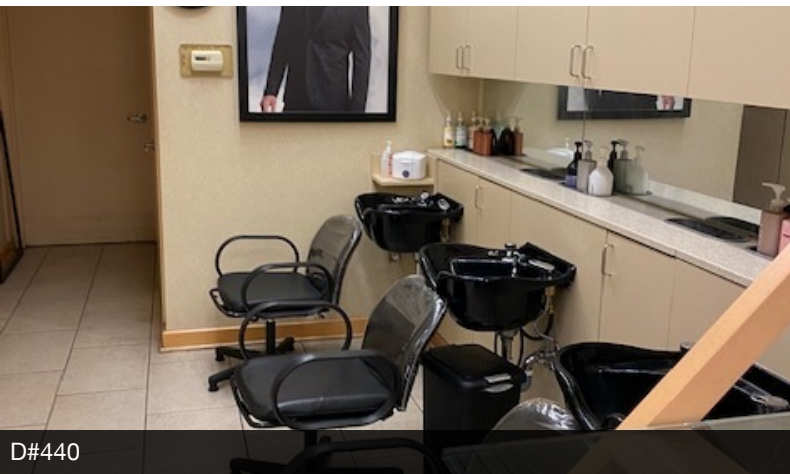
D#440



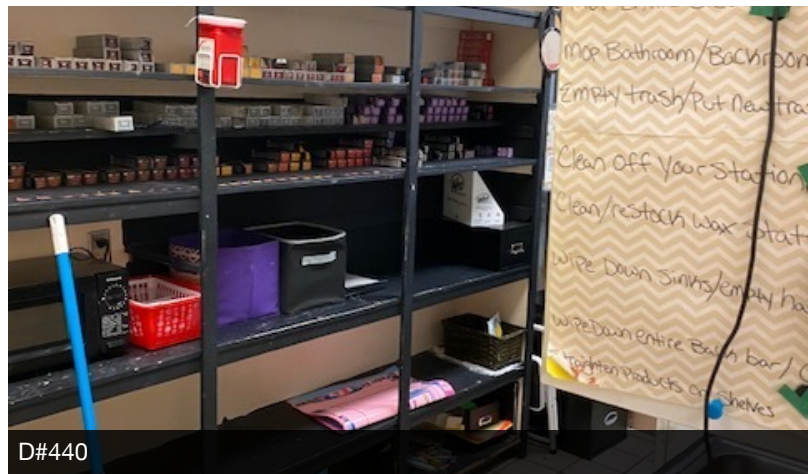
D#440



D#440



D#440



D#440



Commercial Real Estate Services, Worldwide.  
www.naifarbman.com

**Carrie Weiss**  
Sales and Leasing Associate | 248.351.6328  
weiss@farbman.com

**Tracy DeVine**  
Principal Associate Broker | 313.580.6224  
tdevine@genesistc.net

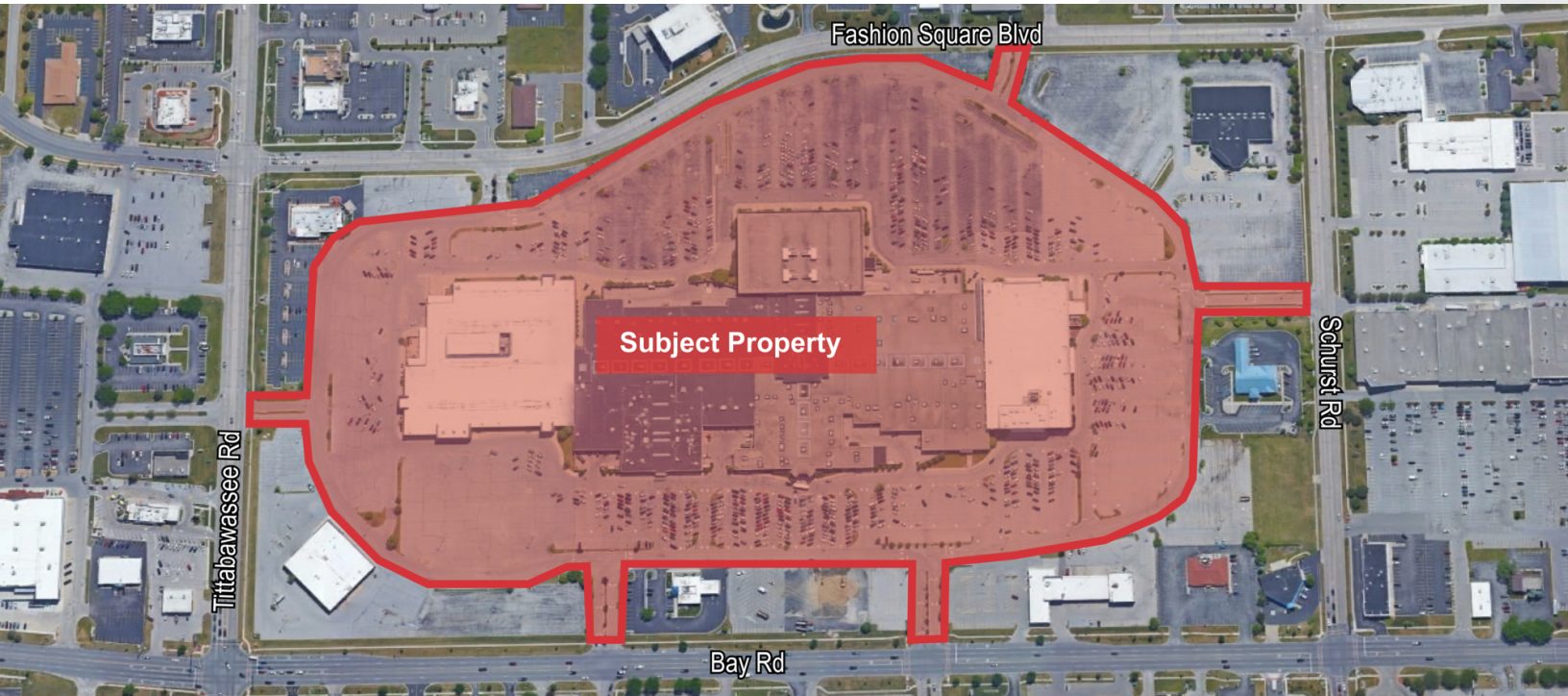
**Cheryl Greene**  
Senior Vice President | 586.707.8484  
cgreene@genesistc.net

NO WARRANTY, EXPRESS OR IMPLIED, IS MADE AS TO THE ACCURACY OF THE INFORMATION CONTAINED HEREIN. THIS INFORMATION IS SUBMITTED SUBJECT TO ERRORS, OMISSIONS, CHANGE OF PRICE, RENTAL OR OTHER CONDITIONS, WITHDRAWAL WITHOUT NOTICE, AND IS SUBJECT TO ANY SPECIAL LISTING CONDITIONS IMPOSED BY OUR PRINCIPALS, COOPERATING BROKERS, BUYERS, TENANTS AND OTHER PARTIES WHO RECEIVE THIS DOCUMENT. SHOULD NOT RELY ON IT, BUT SHOULD USE IT AS A STARTING POINT OF ANALYSIS, AND SHOULD INDEPENDENTLY CONFIRM THE ACCURACY OF THE INFORMATION CONTAINED HEREIN THROUGH A DUE DILIGENCE REVIEW OF THE BOOKS, RECORDS, FILES AND DOCUMENTS THAT CONSTITUTE RELIABLE SOURCES OF THE INFORMATION DESCRIBED HEREIN. LOGOS ARE FOR IDENTIFICATION PURPOSES ONLY AND MAY BE TRADEMARKS OF THEIR RESPECTIVE COMPANIES. NAI CAPITAL, INC. CA BRE LIC. #01990696.

# UP TO 40,000 SF AVAILABLE REGIONAL MALL



## FOR LEASE



**NAI Farbman**

Commercial Real Estate Services, Worldwide.  
www.naifarbman.com

**Carrie Weiss**  
Sales and Leasing Associate | 248.351.6328  
weiss@farbman.com

**Tracy DeVine**  
Principal Associate Broker | 313.580.6224  
tdevine@genesistc.net

**Cheryl Greene**  
Senior Vice President | 586.707.8484  
cgreene@genesistc.net

NO WARRANTY, EXPRESS OR IMPLIED, IS MADE AS TO THE ACCURACY OF THE INFORMATION CONTAINED HEREIN. THIS INFORMATION IS SUBMITTED SUBJECT TO ERRORS, OMISSIONS, CHANGE OF PRICE, RENTAL OR OTHER CONDITIONS, WITHDRAWAL WITHOUT NOTICE, AND IS SUBJECT TO ANY SPECIAL LISTING CONDITIONS IMPOSED BY OUR PRINCIPALS, COOPERATING BROKERS, BUYERS, TENANTS AND OTHER PARTIES WHO RECEIVE THIS DOCUMENT SHOULD NOT RELY ON IT, BUT SHOULD USE IT AS A STARTING POINT OF ANALYSIS, AND SHOULD INDEPENDENTLY CONFIRM THE ACCURACY OF THE INFORMATION CONTAINED HEREIN THROUGH A DUE DILIGENCE REVIEW OF THE BOOKS, RECORDS, FILES AND DOCUMENTS THAT CONSTITUTE RELIABLE SOURCES OF THE INFORMATION DESCRIBED HEREIN. LOGOS ARE FOR IDENTIFICATION PURPOSES ONLY AND MAY BE TRADEMARKS OF THEIR RESPECTIVE COMPANIES. NAI CAPITAL, INC. CA BRE LIC. #01990696.

# UP TO 40,000 SF AVAILABLE REGIONAL MALL



## FOR LEASE



Map data ©2021 Imagery ©2021, CNES / Airbus, Maxar Technologies, USDA Farm Service Agency



Commercial Real Estate Services, Worldwide.  
www.naifarbman.com

**Carrie Weiss**  
Sales and Leasing Associate | 248.351.6328  
weiss@farbman.com

**Tracy DeVine**  
Principal Associate Broker | 313.580.6224  
tdevine@genesistc.net

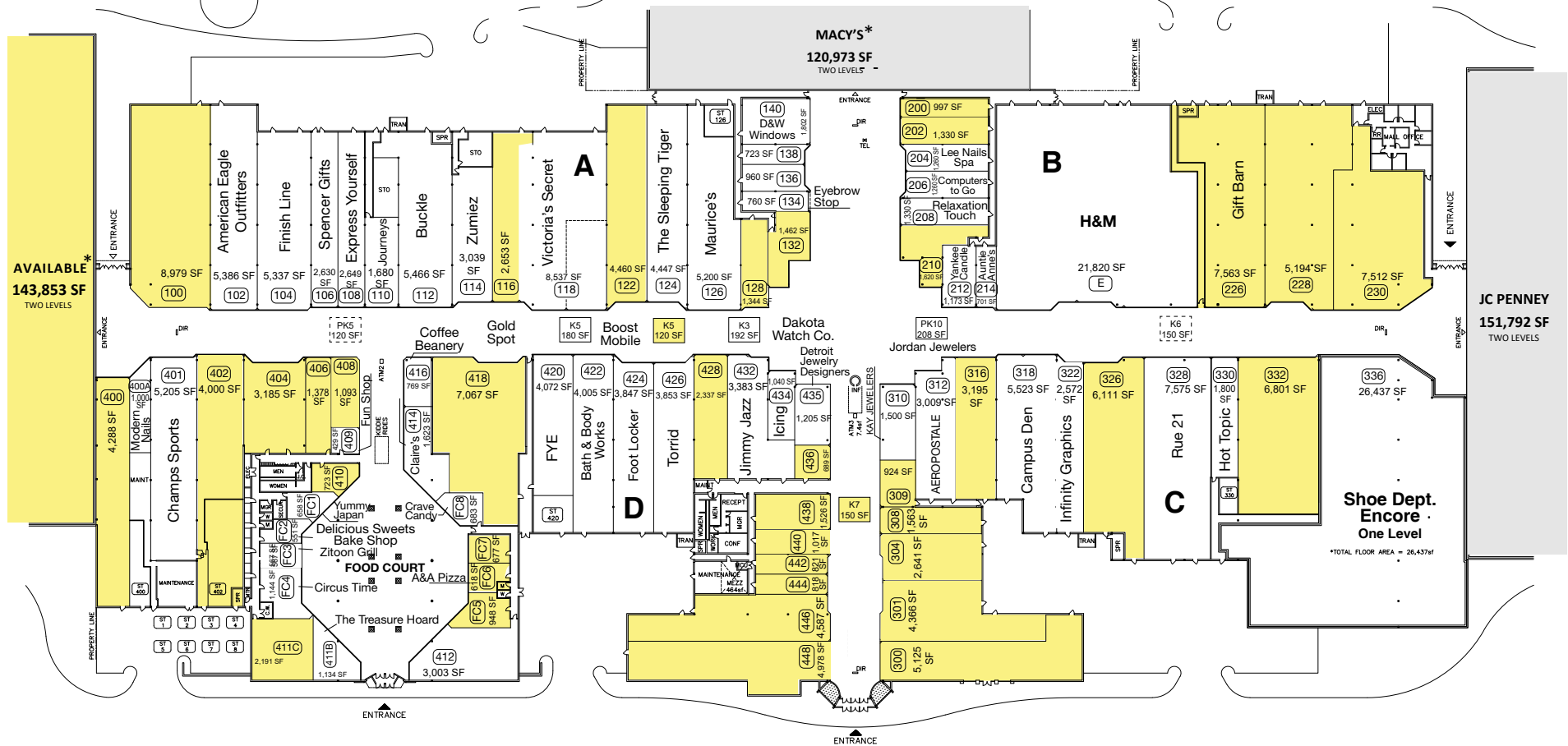
**Cheryl Greene**  
Senior Vice President | 586.707.8484  
cgreene@genesistc.net

NO WARRANTY, EXPRESS OR IMPLIED, IS MADE AS TO THE ACCURACY OF THE INFORMATION CONTAINED HEREIN. THIS INFORMATION IS SUBMITTED SUBJECT TO ERRORS, OMISSIONS, CHANGE OF PRICE, RENTAL OR OTHER CONDITIONS, WITHDRAWAL WITHOUT NOTICE, AND IS SUBJECT TO ANY SPECIAL LISTING CONDITIONS IMPOSED BY OUR PRINCIPALS, COOPERATING BROKERS, BUYERS, TENANTS AND OTHER PARTIES WHO RECEIVE THIS DOCUMENT. SHOULD NOT RELY ON IT, BUT SHOULD USE IT AS A STARTING POINT OF ANALYSIS, AND SHOULD INDEPENDENTLY CONFIRM THE ACCURACY OF THE INFORMATION CONTAINED HEREIN THROUGH A DUE DILIGENCE REVIEW OF THE BOOKS, RECORDS, FILES AND DOCUMENTS THAT CONSTITUTE RELIABLE SOURCES OF THE INFORMATION DESCRIBED HEREIN. LOGOS ARE FOR IDENTIFICATION PURPOSES ONLY AND MAY BE TRADEMARKS OF THEIR RESPECTIVE COMPANIES. NAI CAPITAL, INC. CA BRE LIC. #01990696.

# UP TO 40,000 SF AVAILABLE REGIONAL MALL



## FOR LEASE



4787 FASHION  
SQUARE BOULEVARD

LEASED
  AVAILABLE

PHOTOS AVAILABLE