

For Lease

# Heavy Industrial

Romulus, Michigan

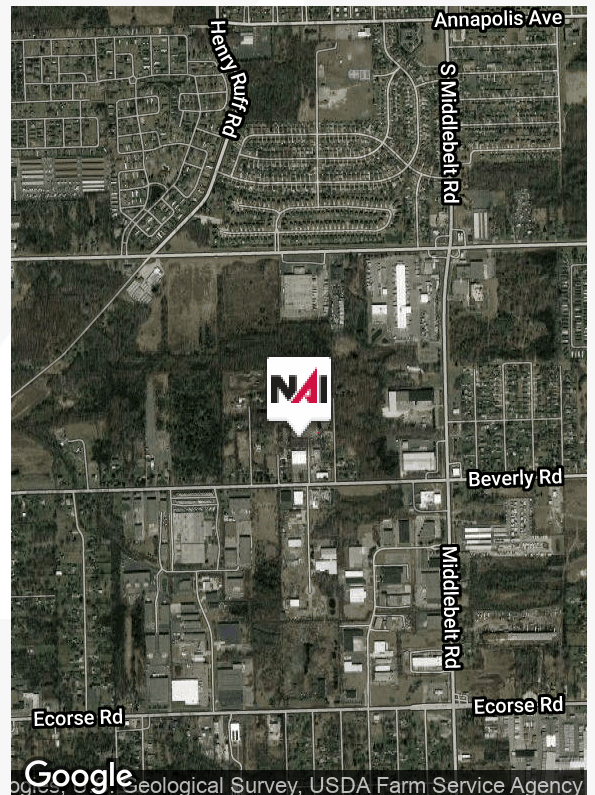


## 30022-28 Beverly Rd

Romulus, Michigan 48174

### Property Highlights

- 6,000-12,000 SF
- Four (4) individual suites at 6,000 SF, each with overhead doors and a single (1) suite with truck wells
- 10% Office floor plan and high ceilings for each individual suite
- Fenced outside storage available
- Ample parking with monument signage along Beverly Rd
- 2 truck doors
- 2 grade level doors
- New energy efficiency lights and heat



For more information

**Brian Crawford**

O: 248 351 4376

crawford@farbman.com

For Lease: Industrial



Beverly Rd

Beverly Rd

Beverly Rd

Foster St

N Beverly Plaza

Burton St

Burton St

Beverly Plaza

Google

Map data © 2018 Google Imagery © 2018 , DigitalGlobe, U.S. Geological Survey, USDA Farm Service Agency

**NAI**Farbman  
Commercial Real Estate Services, Worldwide.

    
WWW.FARBMAN.COM  
MIDWEST EXPERTISE, GLOBAL REACH.

28400 Northwestern Hwy  
Fourth Floor  
Southfield, MI 48034  
248 353 0500 tel  
[naifarbman.com](http://naifarbman.com)