

Office For Lease

1,964 SF - 3,228 SF
Premier Office Building
in Cherry Creek



3033 East 1st Avenue
Denver, Colorado 80206

Property Overview

- Newly renovated 8-story Cherry Creek office building
- Available suites ranging in size from 1,964 SF to 3,228 SF with impeccable city and mountain views
- Recent common area upgrades include the building lobby, elevators, restrooms, and a community cafe
- Brand new interior LED lighting throughout and substantial improvements to HVAC system for energy efficiency
- Building facade has been updated and modernized with titanium metal panels and full-building window replacement
- Abundant parking with direct access to building

Lease Rate: \$46.00-\$49.00/SF FSG

NO WARRANTY OR REPRESENTATION, EXPRESS OR IMPLIED, IS MADE AS TO THE ACCURACY OF THE INFORMATION CONTAINED HEREIN, AND THE SAME IS SUBMITTED SUBJECT TO ERRORS, OMISSIONS, CHANGE OF PRICE, RENTAL OR OTHER CONDITIONS, PRIOR SALE, LEASE OR FINANCING, OR WITHDRAWAL WITHOUT NOTICE, AND OF ANY SPECIAL LISTING CONDITIONS IMPOSED BY OUR PRINCIPALS NO WARRANTIES OR REPRESENTATIONS ARE MADE AS TO THE CONDITION OF THE PROPERTY OR ANY HAZARDS CONTAINED THEREIN ARE ANY TO BE IMPLIED.

Property Facts

Available SF:	1,964 - 3,228 SF
Building Size:	136,883 SF
Parking Ratio:	3.00/1,000
Year Built / Renov:	1982 / 2017

For more information:

Ana Sandomire

303 565 3029
asandomire@shamesmakovsky.com

Peter Knisely

720 881 7534
pknisely@shamesmakovsky.com

1400 Glenarm Place, Suite 100
Denver, CO 80202
303 534 5005

naishamesmakovsky.com

Office For Lease

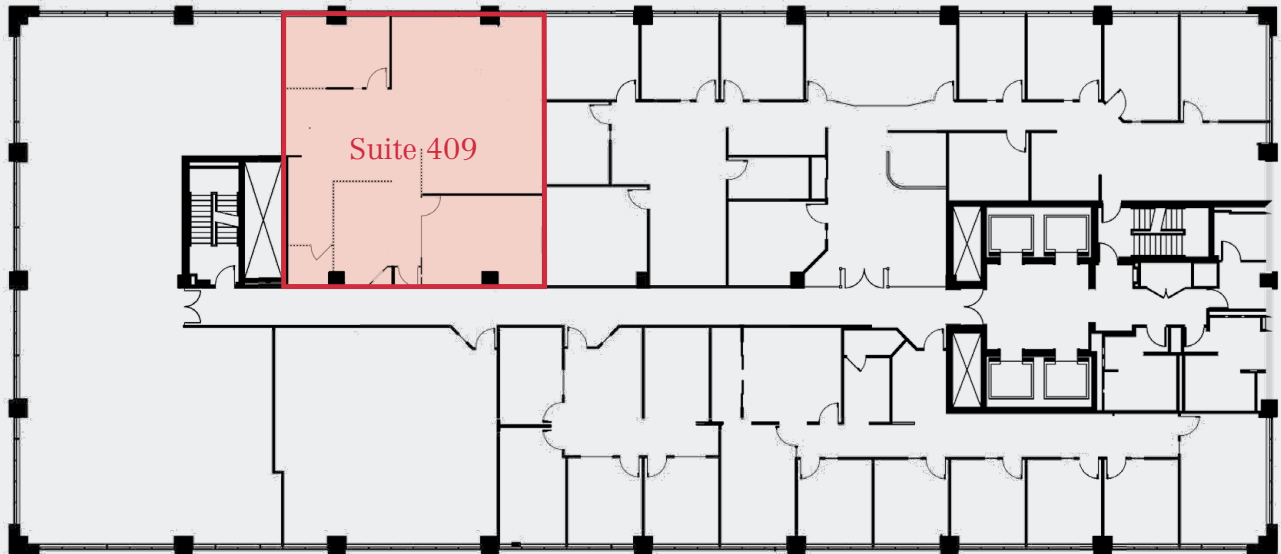
1,964 SF - 3,228 SF

3033 E. 1st Avenue
Denver, Colorado

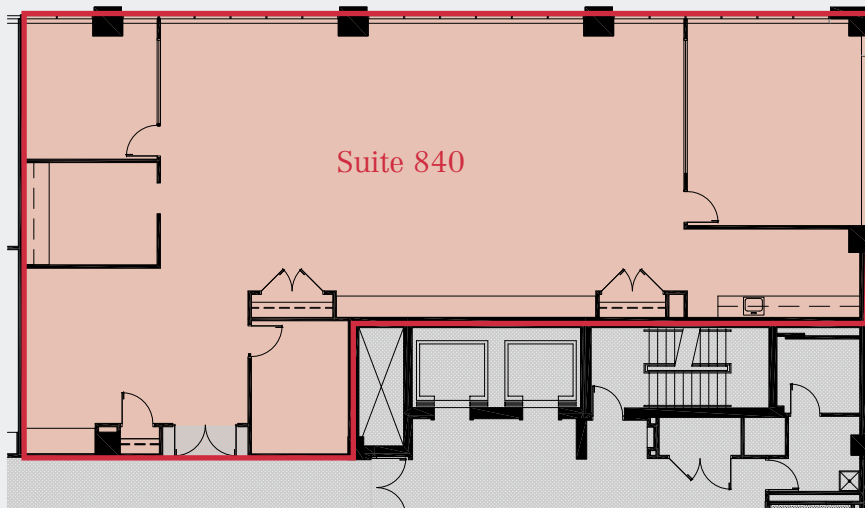
Availability

Suite 409	1,964 SF	\$46.00/SF FSG
-----------	----------	----------------

4th Floor



8th Floor



Suite 840	3,228 SF	\$49.00/SF FSG
-----------	----------	----------------



For more information:

Ana Sandomire
303 565 3029
asandomire@shamesmakovsky.com

Peter Knisely
720 881 7534
pknisely@shamesmakovsky.com

Office For Lease

1,964 SF - 3,228 SF
3033 E. 1st Avenue
Denver, Colorado



Parking

Reserved:	\$225.00/month
Unreserved:	
Underground:	\$175.00/month
Upper Levels:	\$150.00/month

For more information:

Ana Sandomire

303 565 3029
asandomire@shamesmakovsky.com

Peter Knisely

720 881 7534
pknisely@shamesmakovsky.com

1400 Glenarm Place, Suite 100
Denver, CO 80202
303 534 5005

naishamesmakovsky.com