



FOR LEASE



OFFICE



742 SF



1712 East Walnut

Pasadena, California 91106

Property Highlights

- Charming space with hardwood floors
- Building has 2 enclosed offices, private bathroom and open area
- Stand alone building

Property Description

Central Pasadena Location

SPACES

1712 East Walnut Street

LEASE RATE

Negotiable

SPACE SIZE

742 SF

Tina LaMonica

Executive Vice President | 626.204.1523
tlamonica@naicapital.com | CalDRE #01841057

Mike Lanzarotta

Vice President | 626.204.1509
mlanzarotta@naicapital.com | CalDRE #01889122





FOR LEASE



OFFICE



742 SF



Tina LaMonica

Executive Vice President | 626.204.1523
tlamonica@naicapital.com | CalDRE #01841057

Mike Lanzarotta

Vice President | 626.204.1509
mlanzarotta@naicapital.com | CalDRE #01889122



www.naicapital.com

NO WARRANTY, EXPRESS OR IMPLIED, IS MADE AS TO THE ACCURACY OF THE INFORMATION CONTAINED HEREIN. THIS INFORMATION IS SUBMITTED SUBJECT TO ERRORS, OMISSIONS, CHANGE OF PRICE, RENTAL OR OTHER CONDITIONS, WITHDRAWAL WITHOUT NOTICE, AND IS SUBJECT TO ANY SPECIAL LISTING CONDITIONS IMPOSED BY OUR PRINCIPALS, COOPERATING BROKERS, BUYERS, TENANTS AND OTHER PARTIES WHO RECEIVE THIS DOCUMENT SHOULD NOT RELY ON IT, BUT SHOULD USE IT AS A STARTING POINT OF ANALYSIS, AND SHOULD INDEPENDENTLY CONFIRM THE ACCURACY OF THE INFORMATION CONTAINED HEREIN THROUGH A DUE DILIGENCE REVIEW OF THE BOOKS, RECORDS, FILES AND DOCUMENTS THAT CONSTITUTE RELIABLE SOURCES OF THE INFORMATION DESCRIBED HEREIN. LOGOS ARE FOR IDENTIFICATION PURPOSES ONLY AND MAY BE TRADEMARKS OF THEIR RESPECTIVE COMPANIES. NAI CAPITAL, INC. CAL DRE LIC. #02130474



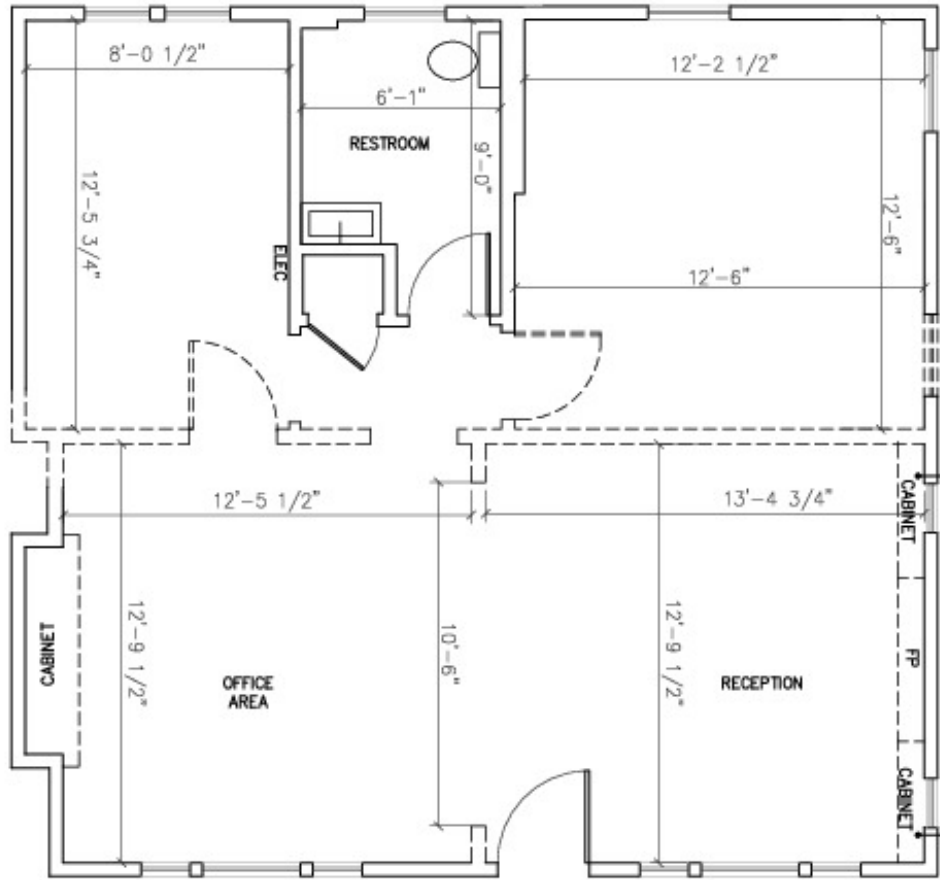
FOR LEASE



OFFICE



742 SF



EXISTING/DEMO FLOOR PLAN

BRAR FAMILY DENTIST
1712 E. WALNUT STREET
PASADENA, CA, 91106

DAHL ARCHITECTS

1134 EL CENTRO ST, SOUTH PASADENA, CA., 91030
 PHONE: 626 564-0011 FAX: 626 564-1591

REVISIONS

Tina LaMonica

Executive Vice President | 626.204.1523
 tlamonica@naicapital.com | CalDRE #01841057

Mike Lanzarotta

Vice President | 626.204.1509
 mlanzarotta@naicapital.com | CalDRE #01889122

