

MSC



912 ROUTE 73

MT. LAUREL, NJ

PRIME LAND DEVELOPMENT SITE
FOR SALE OR GROUND LEASE



912 ROUTE 73

MT. LAUREL, NEW JERSEY

PRIME LAND DEVELOPMENT SITE FOR SALE OR GROUND LEASE

CONTACT

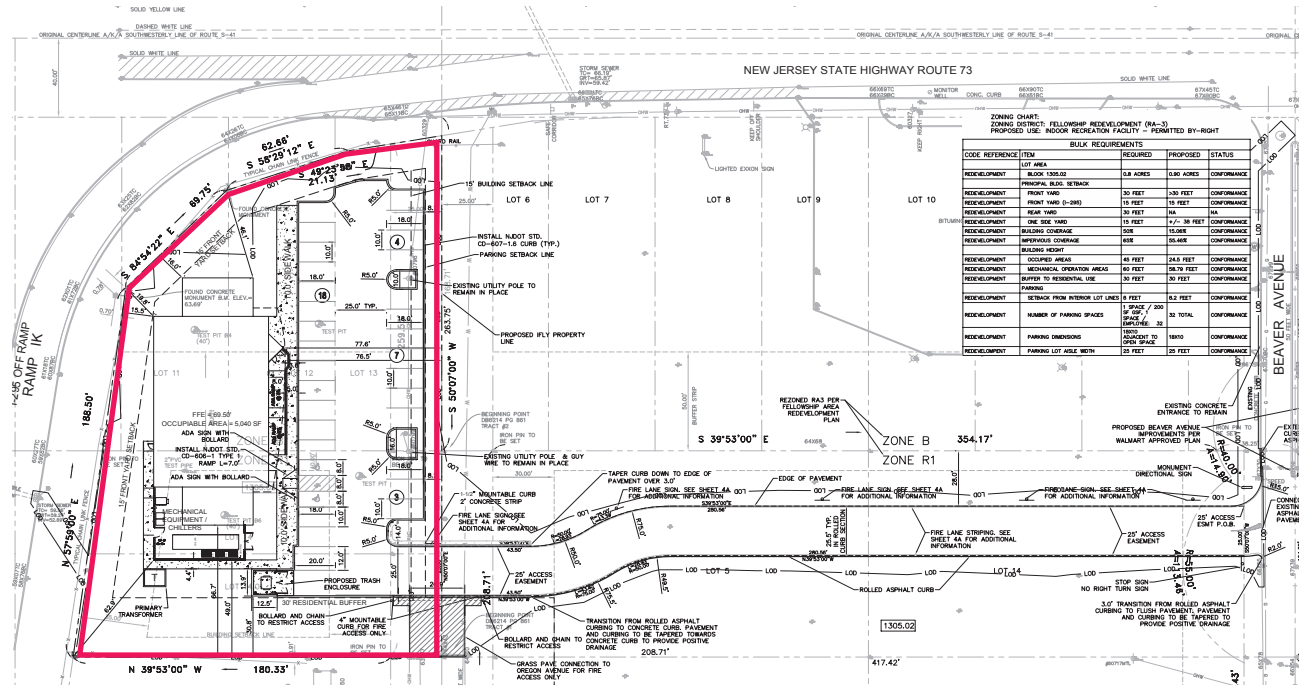
DANNY WOLF
dwolf@hellomsc.com
215.883.7398

JP COLUSSI
jcolussi@hellomsc.com
215.883.7372

JESSE DUBROW
jdubrow@hellomsc.com
215.883.7792



JOIN THESE AREA RETAILERS



NEARBY SHOPPING CENTERS



PROPERTY DETAILS

- Pad site opportunity
- Excellent visibility and access onto Rt. 73
- Located close to NJ Turnpike and I-295
- 2019 Annual taxes: \$36,902.40
- Block: 1305.03 Lot 13.01
- Acres: ±1 acre (46,004 SF)
- Zoning Highway Commercial

DEMOGRAPHICS

- 🐾 **EST. POPULATION**
1 mi 5,005 | 3 mi 82,301 | 5 mi 205,841
- ★ **TOTAL HOUSEHOLDS**
1 mi 2,408 | 3 mi 34,989 | 5 mi 83,658
- 🐾 **AVERAGE HH INCOME**
1 mi \$88,899 | 3 mi \$113,452 | 5 mi \$127,352

The information contained herein has been obtained from sources deemed reliable. MSC cannot verify it and makes no guarantee, warranty or representation about its accuracy. Any projections, opinions, assumptions or estimates provided by MSC are for discussion purposes only and do not represent the current or future performance of a property, location or market.



912 ROUTE 73

MT. LAUREL, NEW JERSEY

PRIME LAND DEVELOPMENT SITE FOR SALE OR GROUND LEASE

CONTACT

DANNY WOLF

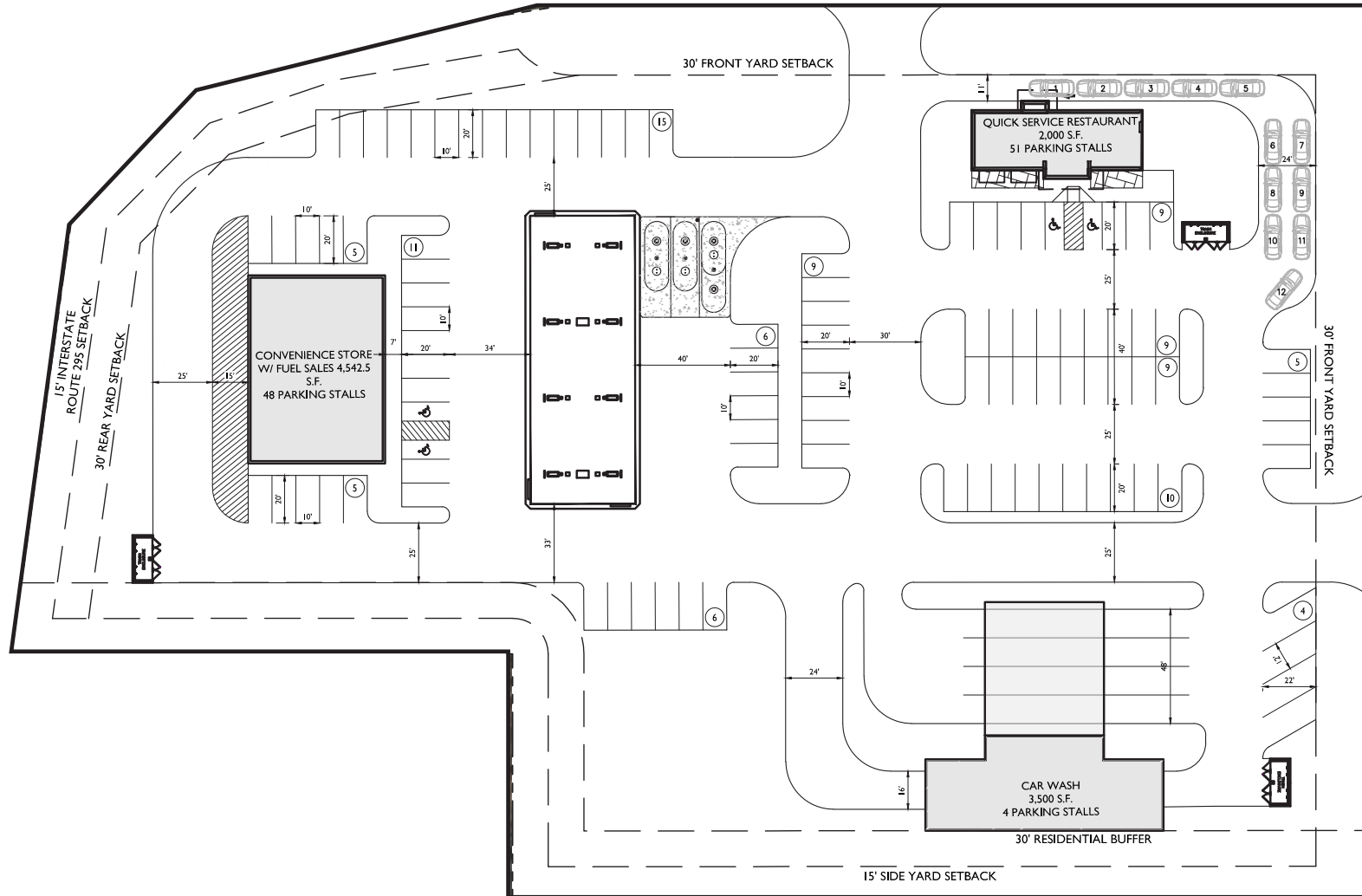
dwolf@hellomsc.com
215.883.7398

JP COLUSSI

jcolussi@hellomsc.com
215.883.7372

JESSE DUBROW

jdubrow@hellomsc.com
215.883.7792



The information contained herein has been obtained from sources deemed reliable. MSC cannot verify it and makes no guarantee, warranty or representation about its accuracy. Any projections, opinions, assumptions or estimates provided by MSC are for discussion purposes only and do not represent the current or future performance of a property, location or market.

MSC

912 ROUTE 73

MT. LAUREL, NEW JERSEY

PRIME LAND DEVELOPMENT SITE FOR SALE OR GROUND LEASE

CONTACT

DANNY WOLF

dwolf@hellomsc.com
215.883.7398

JP COLUSSI

jcolussi@hellomsc.com
215.883.7372

JESSE DUBROW

jdubrow@hellomsc.com
215.883.7792



Marshalls
HomeGoods
Golfsmith

P.J. Whelihan's

M
MOORESTOWN MALL
REGAL
Boscov's
H.M. **Orangetheory FITNESS**
LANDS' END

EAST GATE SQUARE
BARNES & NOBLE **ROSS** **DRESS FOR LESS** **ShopRite**
BEST BUY **Michaels** **STAPLES**
THE HOME DEPOT **AC. MOORE** **ARTS & CRAFTS**
PC. RICHARD & SON

Chick-fil&
Panera
BUFFALO WILD WINGS

Wawa



Walmart

LIFE TIME
THE HEALTHY WAY OF LIFE COMPANY

Starbucks

MILLER'S ALE-HOUSE

Applebee's

73
89,529 MPSI



101,296 MPSI

FELLOWSHIP ROAD

38

NEW JERSEY TURNPIKE