



FOR SALE



OFFICE



2,210 SF



Priced to Sell!

1705 E Walnut St.

Pasadena, California 91106

Property Highlights

- Previous studio of renowned, Ed Parker
- Creative office
- Excellent signage opportunity

Property Description

Previous studio of renowned, Ed Parker. Beautiful tongue and groove wood ceilings, open creative area, 2 private offices, 2 restrooms and kitchen. Gated lot with 4 parking spaces. Excellent signage opportunity.

OFFERING SUMMARY

Sale Price:	\$1,100,000
Building Size:	2,210 SF
Year Built:	1965
Lot Size:	5,748

DEMOGRAPHICS

	1 MILE	2 MILES	3 MILES
Total Households	10,572	39,387	71,260
Total Population	25,276	96,056	184,886
Average HH Income	\$87,190	\$93,843	\$100,777

Marie Taylor

LEED AP, Executive Vice President | 626.204.1520
mtaylor@naicapital.com | CalDRE #01233430





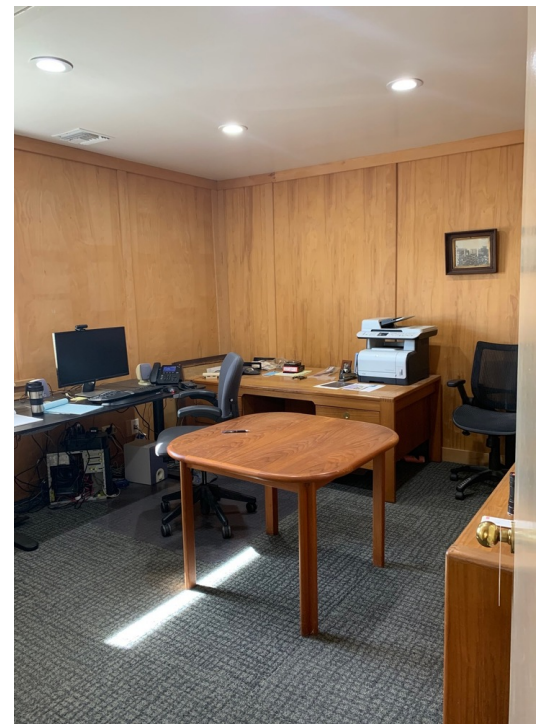
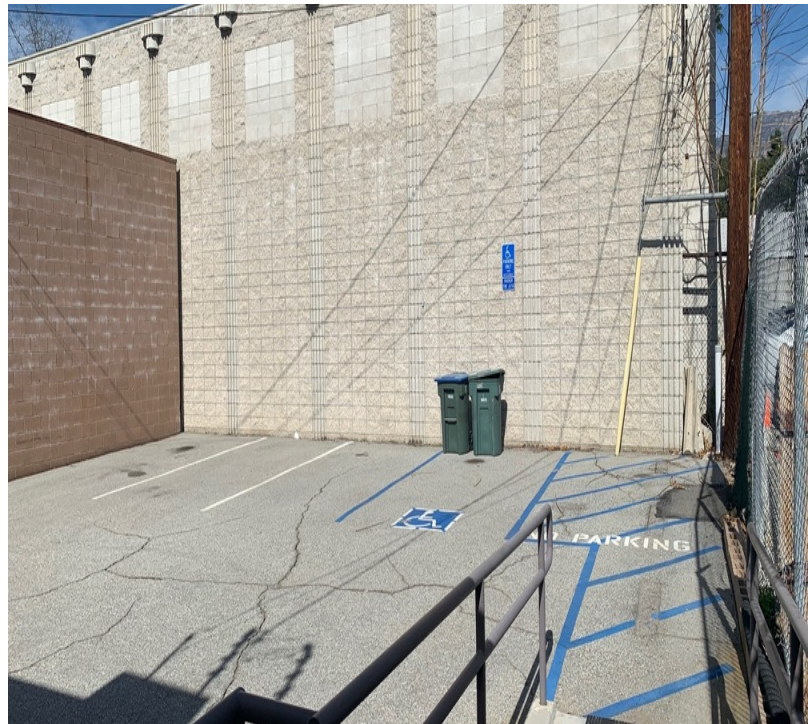
FOR SALE



OFFICE



2,210 SF



Marie Taylor

LEED AP, Executive Vice President | 626.204.1520
mtaylor@naicapital.com | CalDRE #01233430



www.naicapital.com

NO WARRANTY, EXPRESS OR IMPLIED, IS MADE AS TO THE ACCURACY OF THE INFORMATION CONTAINED HEREIN. THIS INFORMATION IS SUBMITTED SUBJECT TO ERRORS, OMISSIONS, CHANGE OF PRICE, RENTAL OR OTHER CONDITIONS, WITHDRAWAL WITHOUT NOTICE, AND IS SUBJECT TO ANY SPECIAL LISTING CONDITIONS IMPOSED BY OUR PRINCIPALS. COOPERATING BROKERS, BUYERS, TENANTS AND OTHER PARTIES WHO RECEIVE THIS DOCUMENT SHOULD NOT RELY ON IT, BUT SHOULD USE IT AS A STARTING POINT OF ANALYSIS, AND SHOULD INDEPENDENTLY CONFIRM THE ACCURACY OF THE INFORMATION CONTAINED HEREIN THROUGH A DUE DILIGENCE REVIEW OF THE BOOKS, RECORDS, FILES AND DOCUMENTS THAT CONSTITUTE RELIABLE SOURCES OF THE INFORMATION DESCRIBED HEREIN. LOGOS ARE FOR IDENTIFICATION PURPOSES ONLY AND MAY BE TRADEMARKS OF THEIR RESPECTIVE COMPANIES. NAI CAPITAL, INC. CAL DRE LIC. #02130474