

# FOR LEASE

\$50 FOGO DE CHAO TOUR INCENTIVE\*

**NAI**Capital  
COMMERCIAL REAL ESTATE SERVICES, WORLDWIDE



**800 S. FIGUEROA ST., LOS ANGELES, CA 90017**

**PRIME OFFICE SPACE IN DOWNTOWN LOS ANGELES**

**Mark O'Brien**

Executive Managing Director  
213.632.7712  
mobrien@naicapital.com  
Cal DRE Lic #01120143

**Matthew Renshaw**

Executive Vice President  
213.632.7720  
mrenshaw@naicapital.com  
Cal DRE Lic #01325033



## Property Overview

- 140,000 SF building
- 17,000 SF floor plates
- Walking distance to Metro Rail Station
- Close proximity to plenty of amenities including Fig@7th and L.A. Live
- Updated elevators
- Updated common areas and restrooms

**\*Receive a \$50 gift card to FOGO DE CHAO for any qualified tours for the suites listed.**

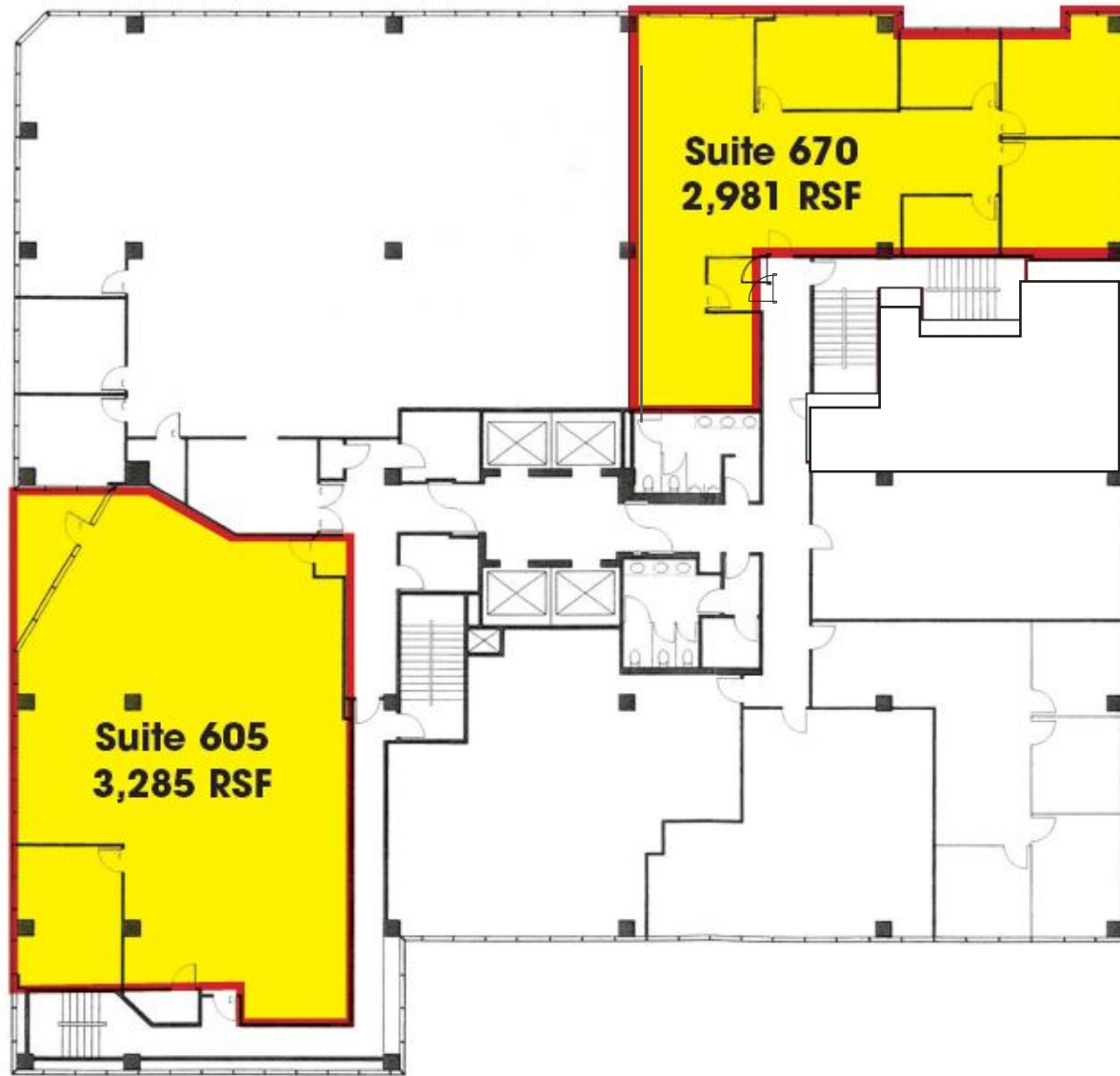
## PRIME OFFICE SPACE

Rate:	Negotiable
Term:	3-10 years
Availability:	Immediately
Available Space:	2,400-3,307 RSF

## SUITES AVAILABLE

6th Floor	Suite 605	3,285 RSF
	Suite 670	2,981 RSF
7th Floor	Suite 730	2,400 RSF
	Suite 760	2,600 RSF (Available 9/2/2021)
9th Floor	Suite 925	2,691 RSF
11th Floor	Suite 1100	3,107 RSF
	Suite 1140	2,683 RSF
12th Floor	Suite 1260	3,307 RSF

## FLOOR PLAN: 6th Floor



**Suite 605:** One of the few balconies in Downtown Los Angeles and open area

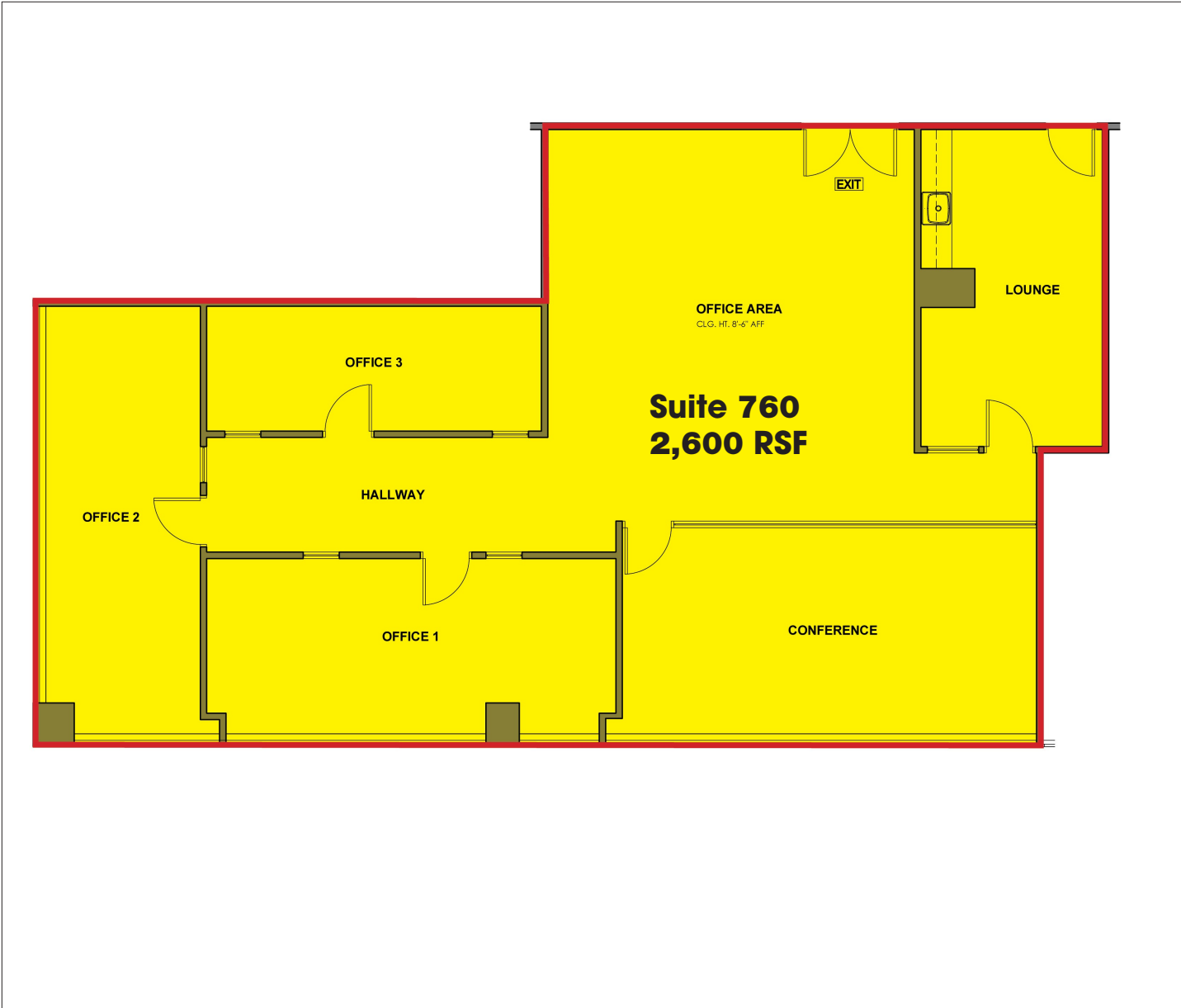
**Suite 670:** Three perimeter offices, with room for one more, kitchen, conference room and open area

# FLOOR PLAN: 7th Floor



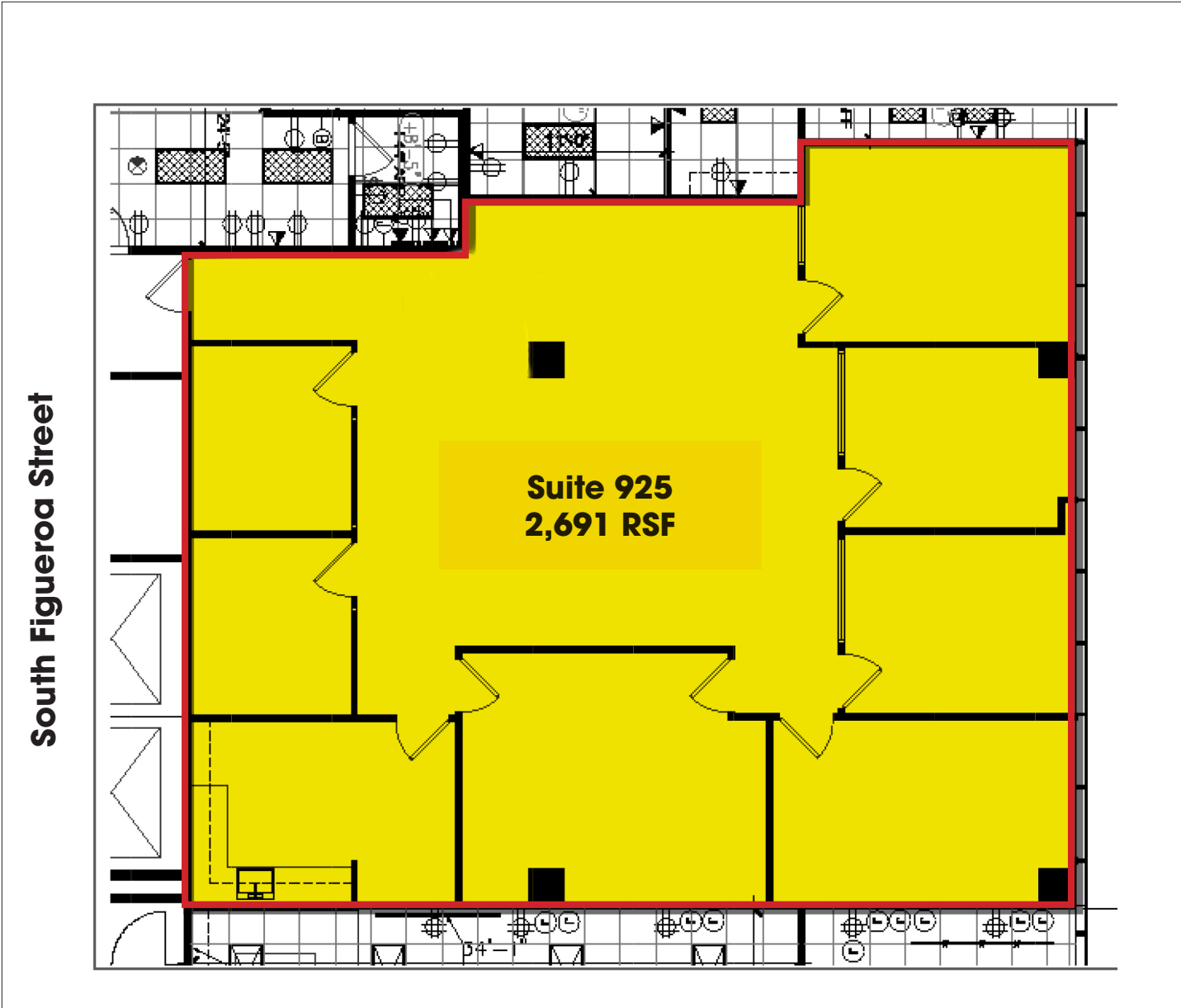
**Suite 730:** Four perimeter offices, three interior offices, conference room, kitchen

# FLOOR PLAN: 7th Floor



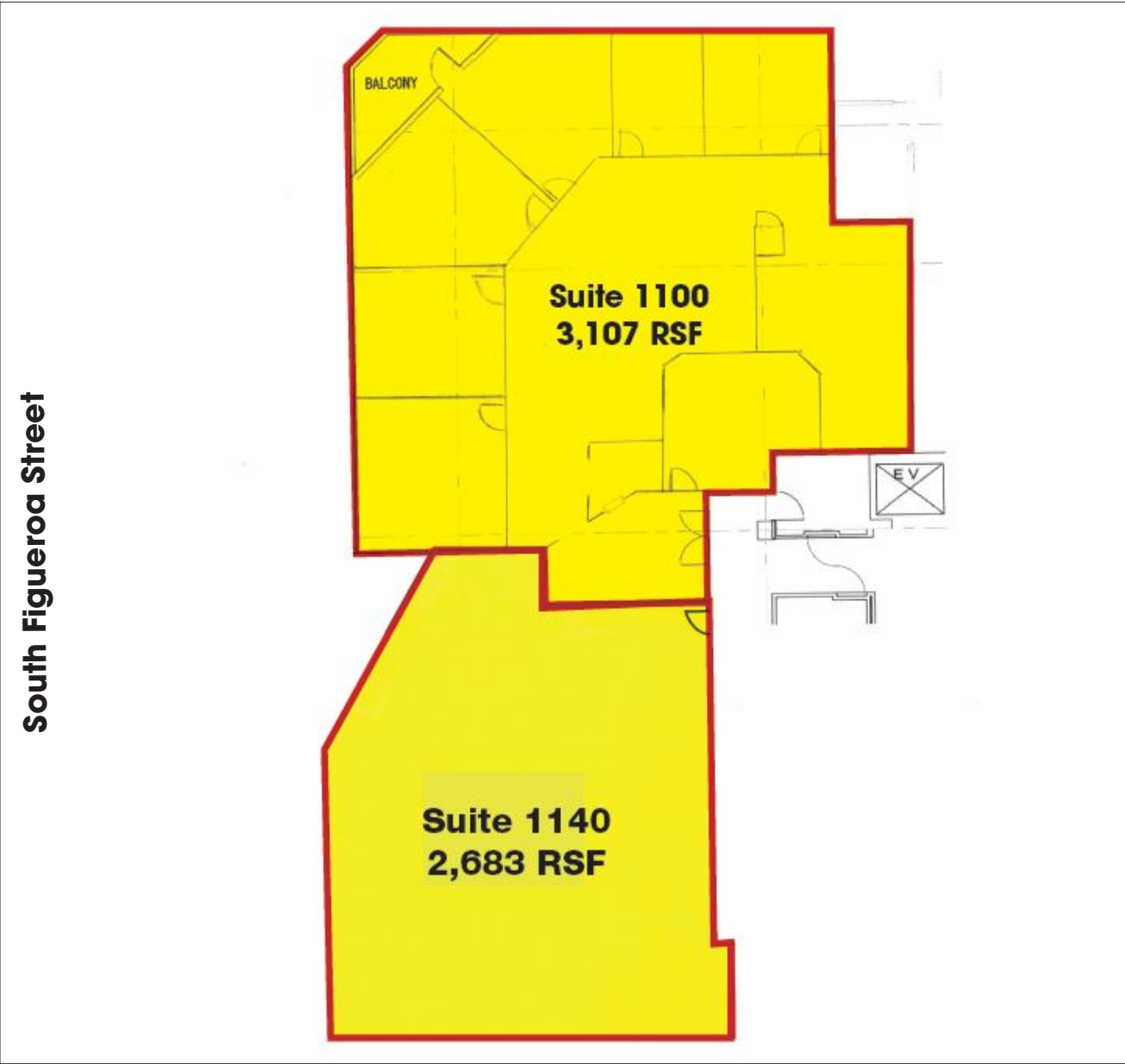
**Suite 760:** Two perimeter offices, one interior office, conference room, kitchen and open area

# FLOOR PLAN: 9th Floor



**Suite 925:** Four perimeter offices, new kitchen, conference room, two interior offices

# FLOOR PLAN: 11th Floor



**Suite 1100:** 3,107 RSF - Six perimeter offices, kitchen and conference room

**Suite 1140:** 2,683 RSF - Shell Condition

\*Suite 1100 and 1140 can be combined to be 5,790 RSF

# FLOOR PLAN: 12th Floor



**Suite 1260:** Six perimeter offices, conference room, kitchen, storage, and large open area for cubicles





COMMERCIAL REAL ESTATE SERVICES, WORLDWIDE

## CONTACT INFORMATION

### **Mark O'Brien**

Executive Managing Director

213.632.7712

[mobrien@naicapital.com](mailto:mobrien@naicapital.com)

Cal DRE Lic #01120143

### **Matthew Renshaw**

Executive Vice President

213.632.7720

[mrenshaw@naicapital.com](mailto:mrenshaw@naicapital.com)

Cal DRE Lic #01325033

### **NAI Capital Commercial**

707 Wilshire Blvd.

Suite 5125

Los Angeles, CA 90017

213.632.7700

No warranty, express or implied, is made as to the accuracy of the information contained herein. This information is submitted subject to errors, omissions, change of price, rental or other conditions, withdrawal without notice, and is subject to any special listing conditions imposed by our principals, cooperating brokers, buyers, tenants and other parties who receive this document should not rely on it, but should use it as a starting point of analysis, and should independently confirm the accuracy of the information contained herein through a due diligence review of the local records, files and documents that constitute reliable sources of the information described herein. NAI Capital, Commercial Cal DRE #02130472