

1202 National Highway

Thomasville, North Carolina 27360

Property Highlights

- 7.13± acres
- Zoned C2
- Frontage on Business 85 and National Highway
- Located just south of High Point along Business 85
- Easy navigation to Greensboro, Winston-Salem or anywhere in the Triad
- This site is nestled in a thriving retail/commercial corridor
- Established tenants located within less than a mile: Sheetz, Burger King, Advanced Auto Parts, Rite Aid, Dollar General, Exxon, Old Dominion and Lexington Home Brands
- Owner will build to suit and lease for car sales, RV Sales, Truck sales, or Trailer storage



For More Information

Sam Munday

C: 336 414 6141
smunday@naipt.com

Elliot Sheridan

C: 336 404 8768
esheridan@naipt.com

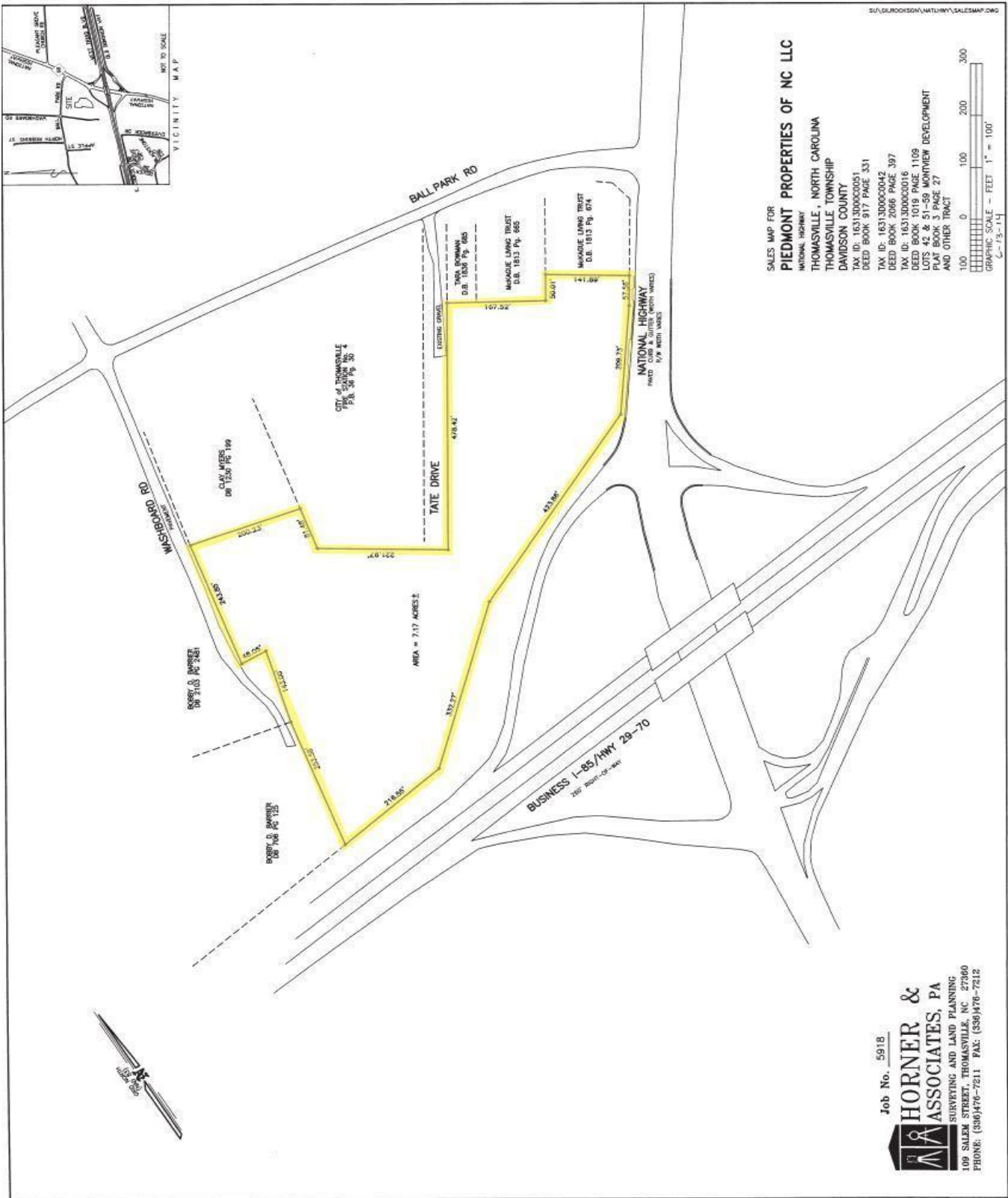
Demographics 1 Mile 5 Miles 10 Miles

	1 Mile	5 Miles	10 Miles
Total Households	1,399	26,363	82,334
Total Population	3,485	67,944	212,011
Average HH Income	\$48,497	\$48,852	\$54,885

Sales Price: \$399,000

We obtained the information above from sources we believe to be reliable. However, we have not verified its accuracy and make no guarantee, warranty or representation about it. It is submitted subject to the possibility of errors, omissions, change of price, rental or other conditions, prior sale, lease or financing, or withdrawal without notice. We include projections, opinions, assumptions or estimates for example only, and they may not represent current or future performance of the property. You and your tax and legal advisors should conduct your own investigation of the property and transaction.

348 N. Elm Street
Greensboro, NC 27401
336.373.0995
www.naipt.com



We obtained the information above from sources we believe to be reliable. However, we have not verified its accuracy and make no guarantee, warranty or representation about it. It is submitted subject to the possibility of errors, omissions, change of price, rental or other conditions, prior sale, lease or financing, or withdrawal without notice. We include projections, opinions, assumptions or estimates for example only, and they may not represent current or future performance of the property. You and your tax and legal advisors should conduct your own investigation of the property and transaction.