

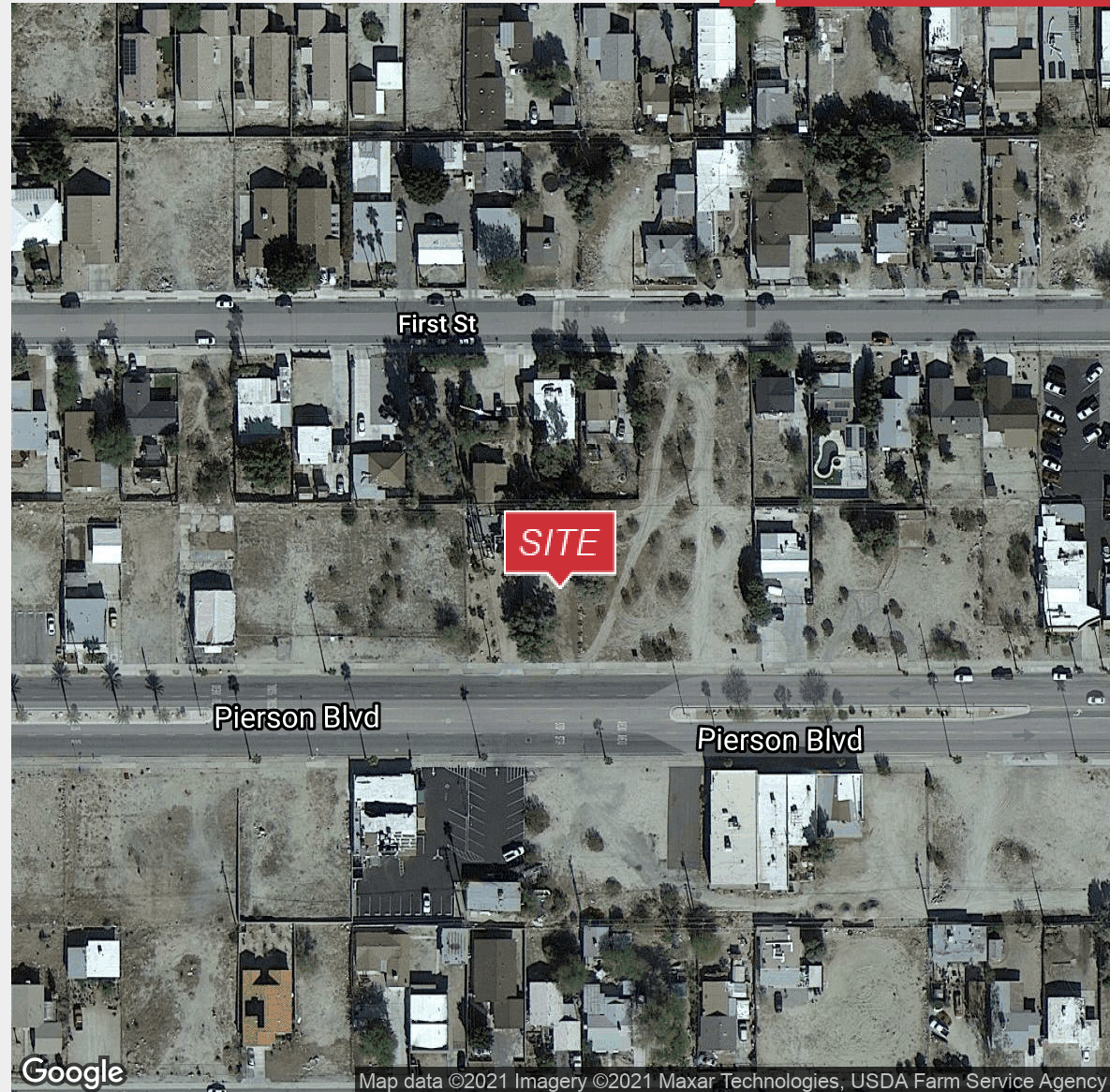
66146 Pierson Blvd.

Desert Hot Springs, California 92240

Property Features

- City Parcel 11
- .15 Acre of Vacant Land
- Zoned- VSP Retail
- Site is Curbed
- Government Center is 1/2 Block Away
- Near Community Center
- Near Elementary and High Schools
- Full Frontage on Pierson Blvd.

Demographics	1 Mile	3 Miles	5 Miles
Total Population:	7,858	33,341	42,071
Total Households:	2,536	11,247	14,424
Traffic Counts:			



For Sale

Land

0.15 Acres



NO WARRANTY, EXPRESS OR IMPLIED, IS MADE AS TO THE ACCURACY OF THE INFORMATION CONTAINED HEREIN. THIS INFORMATION IS SUBMITTED SUBJECT TO ERRORS, OMISSIONS, CHANGE OF PRICE, RENTAL OR OTHER CONDITIONS, WITHDRAWAL WITHOUT NOTICE, AND IS SUBJECT TO ANY SPECIAL LISTING CONDITIONS IMPOSED BY OUR PRINCIPALS. COOPERATING BROKERS, BUYERS, TENANTS AND OTHER PARTIES WHO RECEIVE THIS DOCUMENT SHOULD NOT RELY ON IT, BUT SHOULD USE IT AS A STARTING POINT OF ANALYSIS, AND SHOULD INDEPENDENTLY CONFIRM THE ACCURACY OF THE INFORMATION CONTAINED HEREIN THROUGH A DUE DILIGENCE REVIEW OF THE BOOKS, RECORDS, FILES AND DOCUMENTS THAT CONSTITUTE RELIABLE SOURCES OF THE INFORMATION DESCRIBED HEREIN. LOGOS ARE FOR IDENTIFICATION PURPOSES ONLY AND MAY BE TRADEMARKS OF THEIR RESPECTIVE COMPANIES. NAI CAPITAL, INC. CAL DRE LIC. #02130474

Lynn F. Coker
 760.834.3623
 lcoker@naicapital.com
 CalDRE #01363265

NAI Capital
 75-410 Gerald Ford Drive Suite 200
 Palm Desert, CA 92211
 760.346.1566
www.naicapital.com