



Baseline Professional Center

1204 E Baseline Rd
Tempe, Arizona 85283

EXCLUSIVELY LISTED BY:

Troy Giammarco

+1 602 393 6693

troy.giammarco@naihonorizon.com

NAIHorizon

Joe Pequeno

+1 602 393 6602

joe.pequeno@naihonorizon.com

The Property

Building Size	20,430 SF
Building Class	B
Zoning	PCC-2
Year Built	1982
Cross Streets	Baseline & Lakeshore
Total Space Available	±5,199 SF
Suites Available	2,499-2,700 SF
Lease Rate	\$16.00-\$22.00/SF, FS

Property Amenities & Highlights

- Plug and play suite ready to go
- Above standard finishes
- Monument signage available
- Strong ownership
- Great building in the heart on central Tempe
- Minutes to I-60



Property Photos



Property Photos

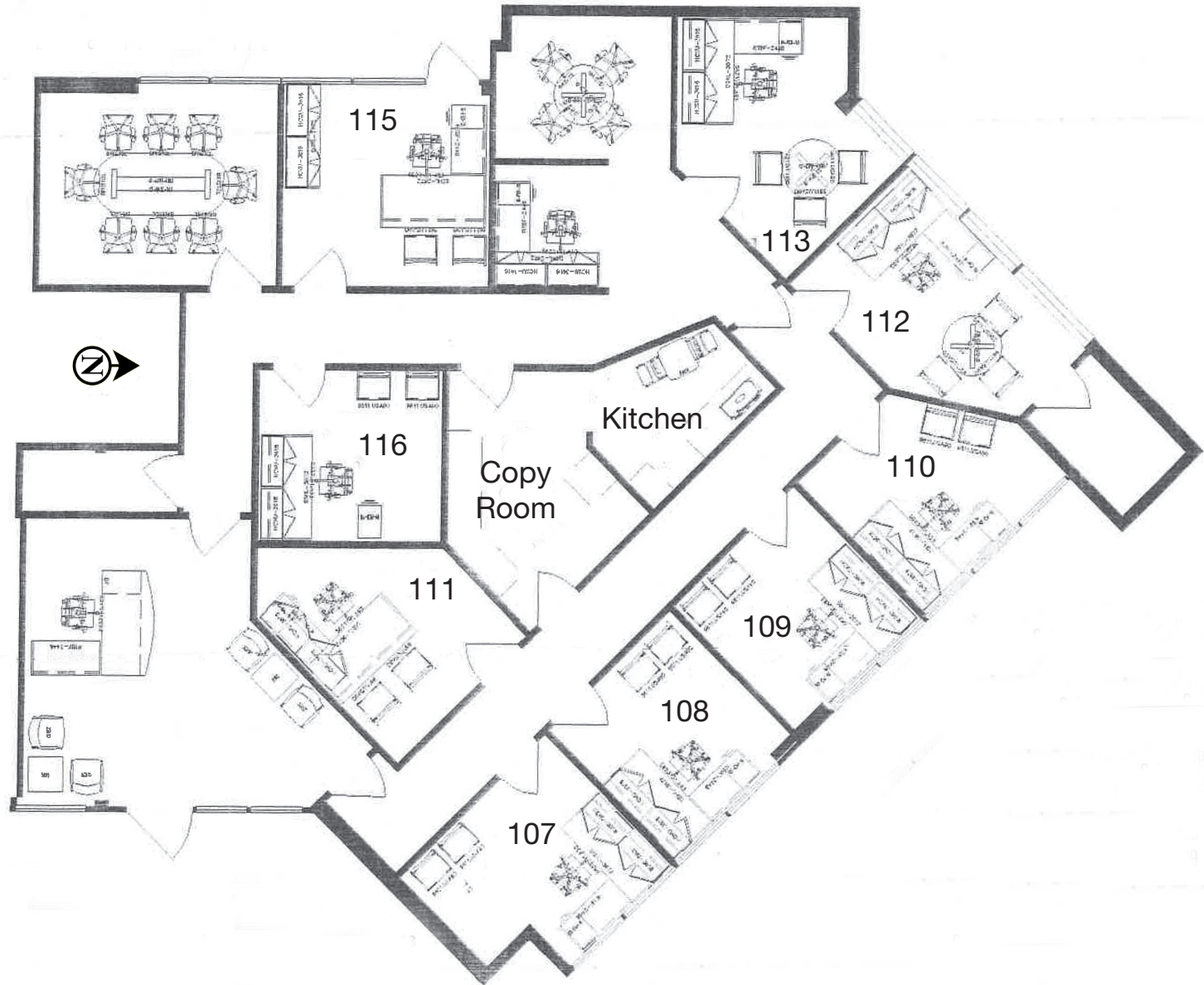


Property Photos



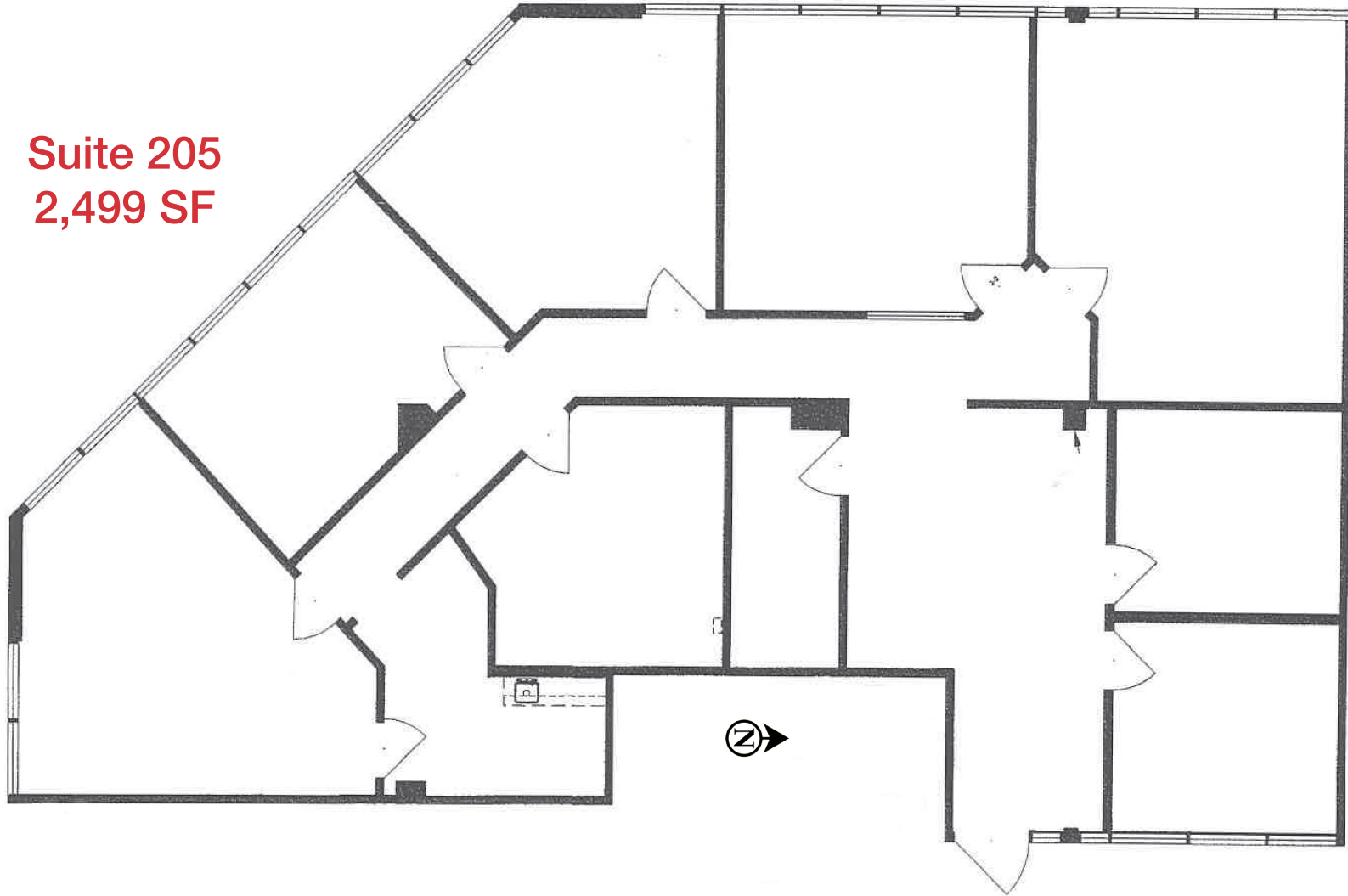
Floor Plans

Suite 106
2,700 SF



Floor Plans

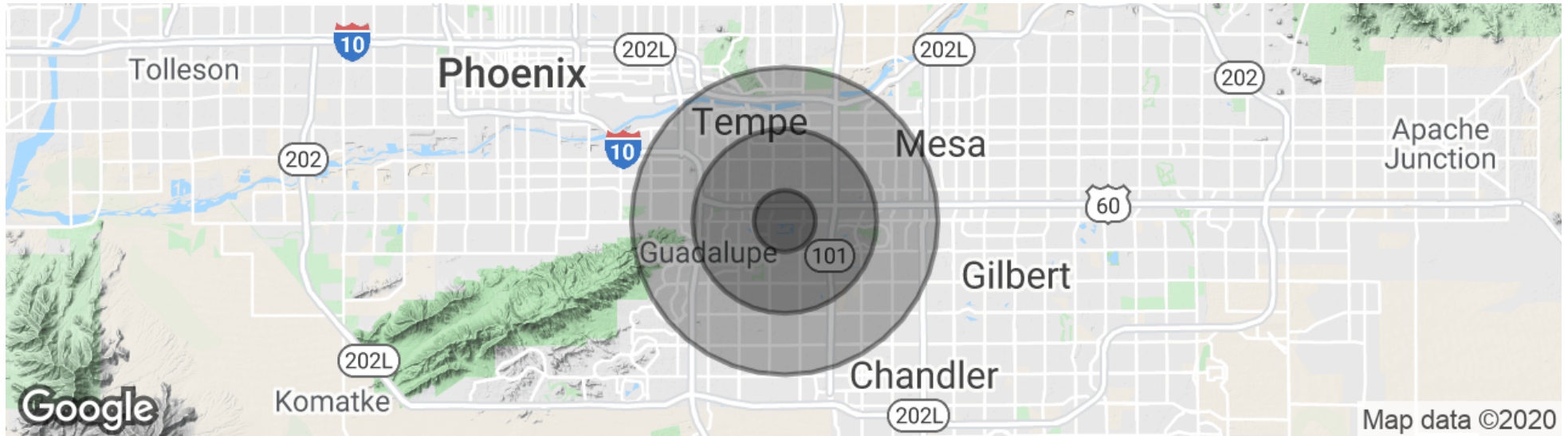
Suite 205
2,499 SF



Property **Aerial**



Property Demographics



POPULATION

	1 MILE	3 MILES	5 MILES
Total Population	17,713	143,870	343,076
Average age	31.5	31.6	31.8
Average age (Male)	30.5	30.9	31.0
Average age (Female)	32.7	32.0	32.4

HOUSEHOLDS & INCOME

	1 MILE	3 MILES	5 MILES
Total households	6,998	56,698	135,390
# of persons per HH	2.5	2.5	2.5
Average HH income	\$76,178	\$65,753	\$64,940
Average house value	\$288,617	\$264,540	\$245,068

* Demographic data derived from 2010 US Census

1204 E Baseline Rd

Tempe AZ 85283

For Lease

For More Information Contact:

Troy Giammarco
troy.giammarco@naihhorizon.com
602 393 6693

Joe Pequeno
joe.pequeno@naihhorizon.com
602 393 6602



2944 N 44th Street, Suite 200
Phoenix, AZ 85018
602 955 4000
naihhorizon.com