

For Lease

Heaven III

3,467 SF | \$16.00 / SF



6925 Lake Ellenor Drive

Orlando, Florida 32809

Property Highlights

- 114,250 SF, 6 building office park
- Perfect for growing companies
- Ready to go office suites
- Competitive rental rates
- Parking - 3.8/1000
- Property management on site
- Easy access to Sand Lake Road, John Young Parkway, Turnpike and I-4
- Close to restaurants and shopping
- Owner willing to provide tenant improvements

OFFERING SUMMARY

Available SF	3,467 SF
Lease Rate	\$16.00 / SF
Lot Size	8.8 Acres
Building Size	114,250 SF



For more information

Chris Adams, MiCP

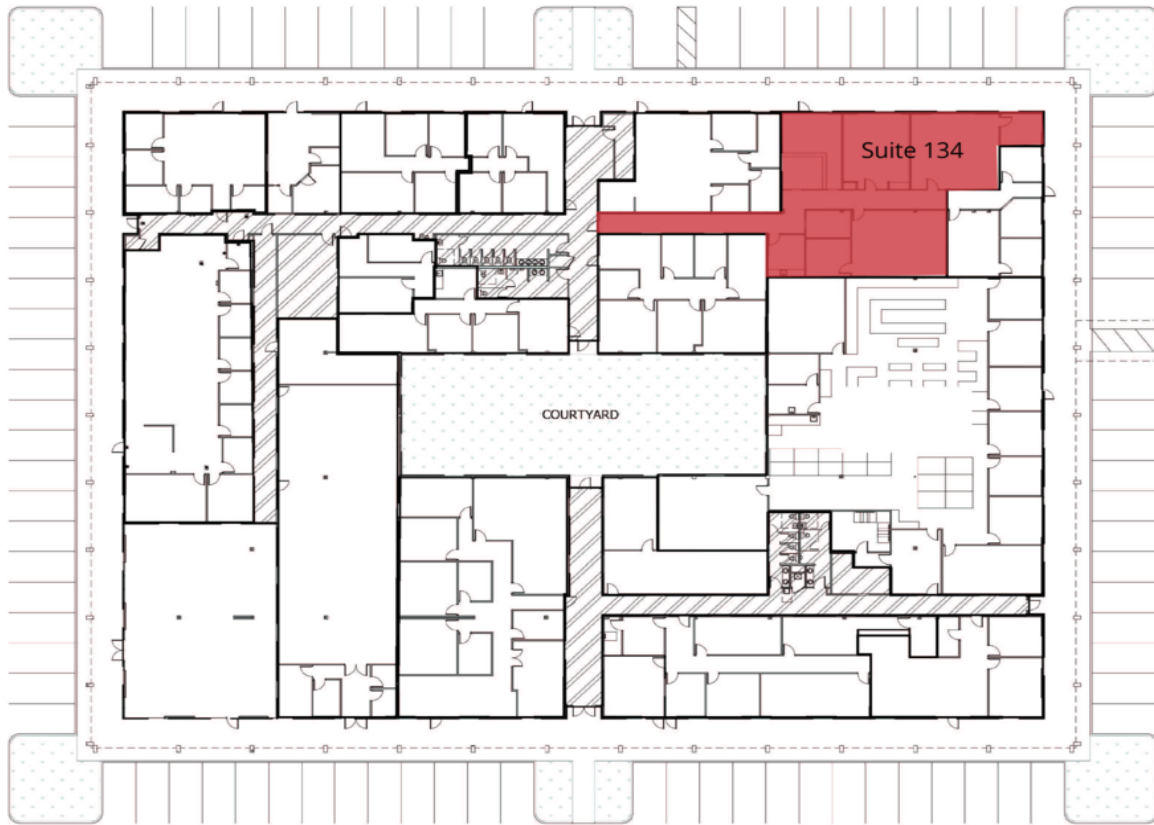
O: 407 949 0731
cadams@realvest.com

Tom R. Kelley II, CCIM

O: 407 949 0715
tkelley@realvest.com

Lease Rate: \$16.00 / SF

Available Spaces



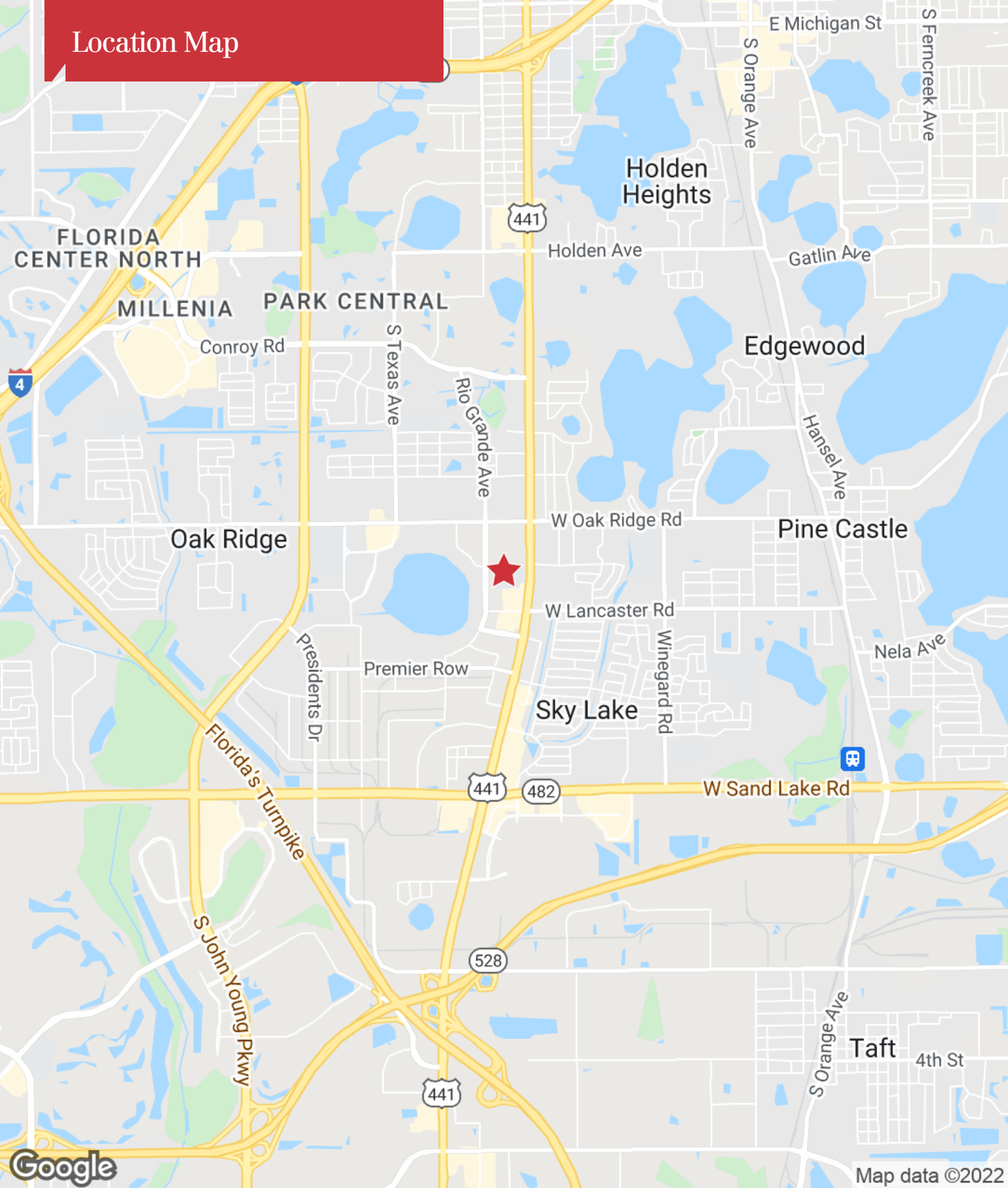
BUILDING #1 AREA PLAN

Space	Space Use	Lease Rate	Lease Type	Size (SF)	Term	Comments
Suite 134	Office Building	\$16.00 SF/yr	Net of Janitorial	3,467 SF	3-5 Years	

Additional Photos



Location Map



Map data ©2022