

RUBIO PLAZA

16542-16550 VENTURA BLVD
ENCINO, CA 91436

FOR LEASE



PROPERTY FEATURES

Highlights:

- **High-Visibility Office/Medical in The Heart of Encino**
- **Close Proximity to The Encino, Sherman Oaks and Tarzana Hospitals.**
- **Newly Renovated Building**
- **Serene Outdoor Courtyard with Lush Landscaping**
- **Valet Parking for Visitors**
- **On-Site Pharmacy**
- **On-Site Restaurants including: Katsuya and Veggie Grill**
- **Central Location with Close Proximity to 101/405 Fwys**

Terms:

- **3-10 Years**

For more information, contact:

ADAM COMORA

Executive Vice President
c. 818 521 2623 | o. 818 742 1610
acomora@naicapital.com | Cal DRE Lic#01312271

AVAILABILITIES

16542 Ventura Blvd - Rubio East

Available Space:

SUITE #	RATE	USE	SIZE
302	\$3.25/SF, FSG	Medical	1,291 SF
500	\$3.25/SF, FSG	Medical	4,391 SF Divisible

AVAILABILITIES

16550 Ventura Blvd - Rubio West

Available Space:

SUITE #	RATE	USE	SIZE
120	\$3.50/SF, MG	Medical	3,544 SF



PROPERTY PHOTOS



PROPERTY PHOTOS



PROPERTY PHOTOS



PROPERTY PHOTOS



PROPERTY PHOTOS



PROPERTY PHOTOS



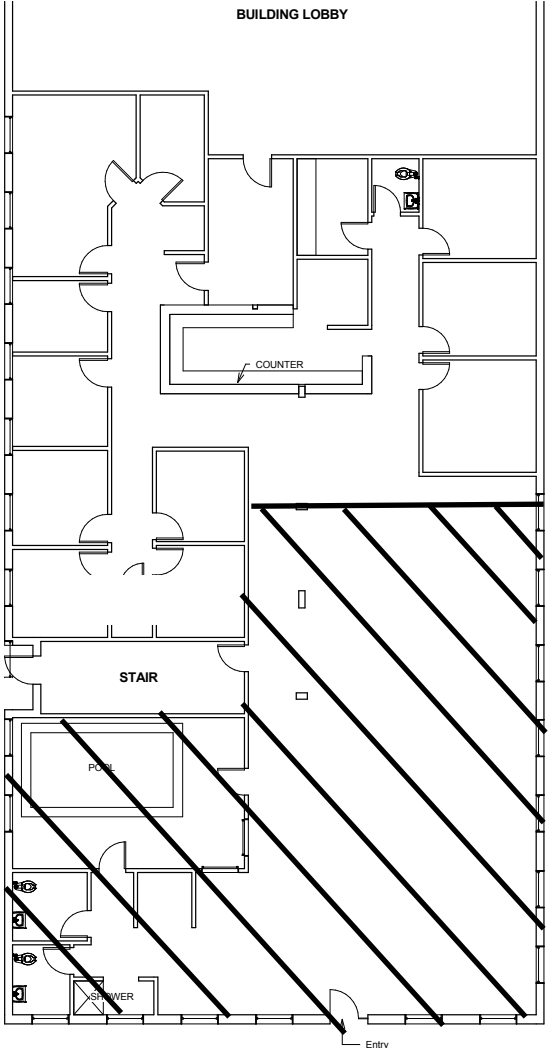
FLOOR PLAN

16550 Ventura Blvd - 1st Floor



SUITE 120 • 3,544 SF

Not to scale and may not be accurate. For illustration purposes only.



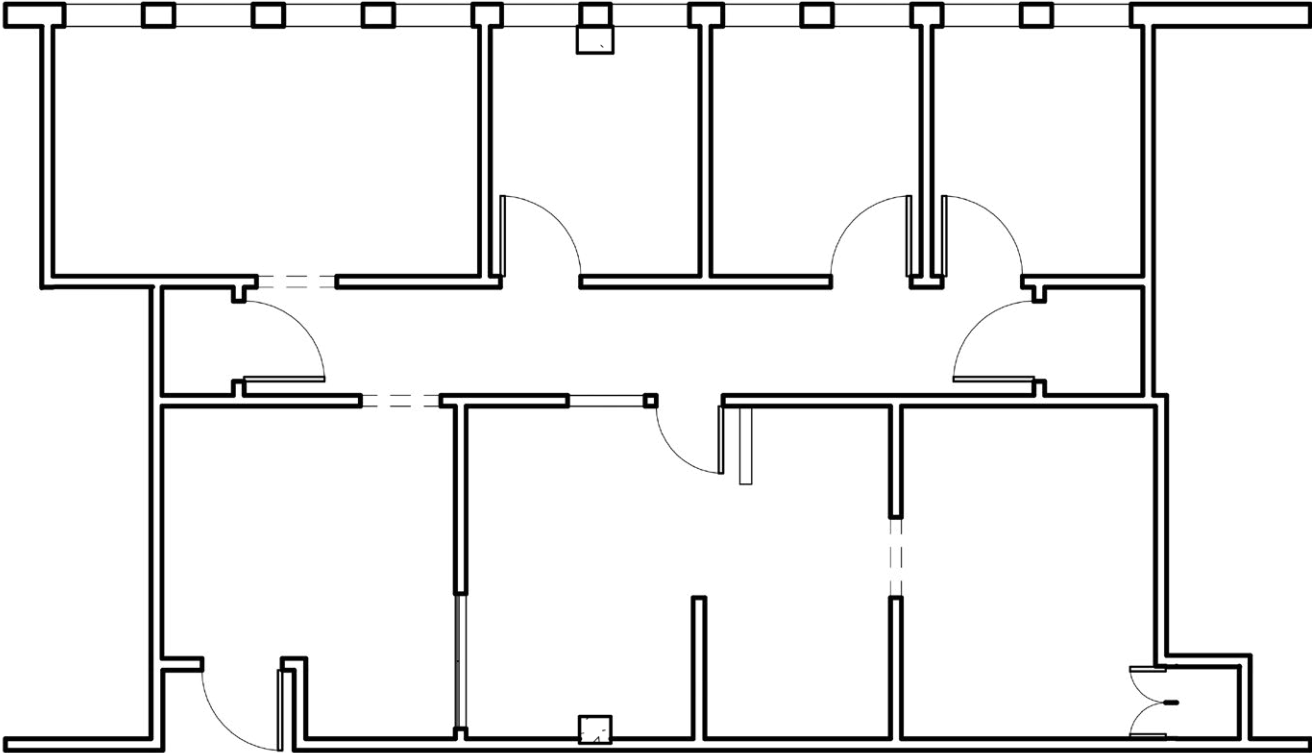
FLOOR PLAN

16542 Ventura Blvd - 3rd Floor



SUITE 302 • 1,291 SF

Not to scale and may not be accurate. For illustration purposes only.



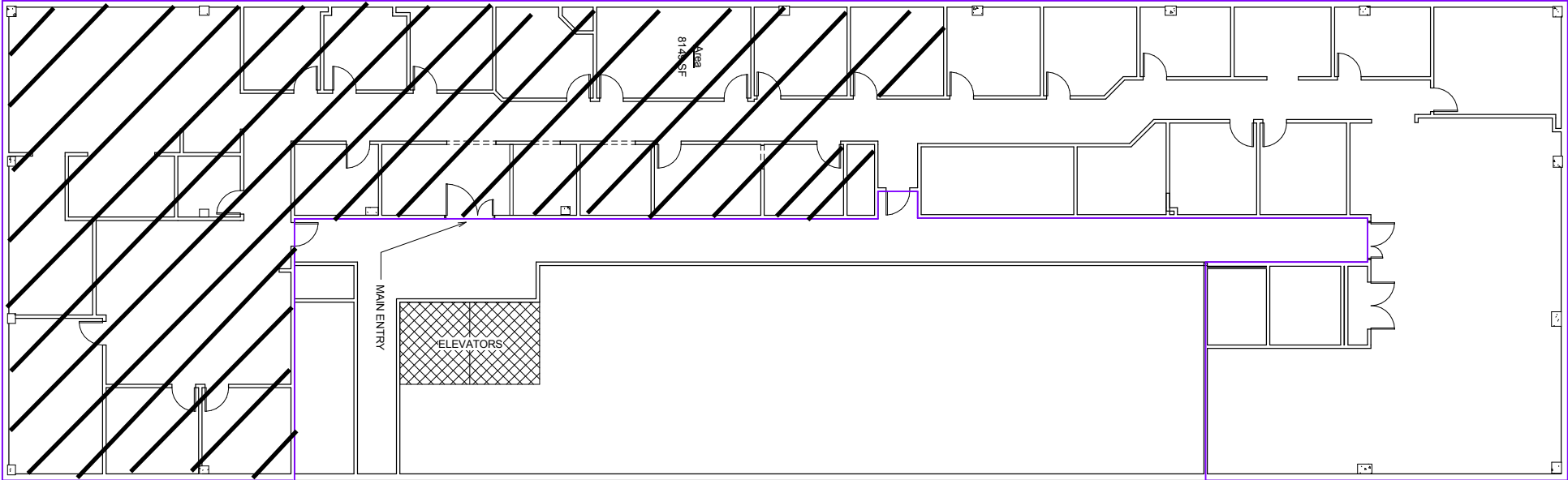
FLOOR PLAN

16542 Ventura Blvd - 5th Floor



SUITE 500 • 4,391 SF

Not to scale and may not be accurate. For illustration purposes only.



RUBIO PLAZA

16542-16550 VENTURA BLVD
ENCINO, CA 91436

THE BOULEVARD TEAM

LEASING AND SALES EXPERTS

ADAM COMORA

Executive Vice President

c. 818 521 2623 | o. 818 742 1610

acomora@naicapital.com | Cal DRE Lic#01312271

NAI Capital

COMMERCIAL REAL ESTATE SERVICES, WORLDWIDE

No warranty, express or implied, is made as to the accuracy of the information contained herein. This information is submitted subject to errors, omissions, change of price, rental or other conditions, withdrawal without notice, and is subject to any special listing conditions imposed by our principals. Cooperating brokers, buyers, tenants and other parties who receive this document should not rely on it, but should use it as a starting point of analysis, and should independently confirm the accuracy of the information contained herein through a due diligence review of the books, records, files and documents that constitute reliable sources of the information described herein. NAI Capital CA DRE #02130474