



195 Highway 50

195 Highway 50, Zephyr Cove, Nevada 89448

Property Features

- Property is ideally located within a short driving distance to Stateline casinos, Heavenly Village and Gondola, as well as numerous restaurants, shopping and endless outdoor activities.
- This well-designed building is situated within the Round Hill Mall (Safeway) shopping center with several shops, restaurants and service providers as co-tenants.
- Various floor plans offered including full floors or shared work environments.
- The building offers ADA access to the main floor and offers an ADA compliant wheelchair lift to the lower level.
- This established center sits among rustic pines with beautiful mountain views!



For more information:

Scott Fair

530 573 4669 • sfair@naitahoesierra.com

Office Space



Property Summary

Available SF:	200 - 10,558 SF
Lease Rate:	Negotiable
Lot Size:	0.25 Acres
Building Size:	10,558 SF
Building Class:	B
Year Built:	1984
Renovated:	2007
Zoning:	GC - General Commercial
Market:	South Lake Tahoe
Sub Market:	Zephyr Cove/Stateline
Cross Streets:	Elks Point Road
Traffic Count:	25,000

Property Overview

This beautifully designed 3-story office building is located on a corner outparcel within the busy Round Hill Mall shopping center in Zephyr Cove. Lease as multi-tenant space, or a full floor user. Partial co-shared work space will be considered.

Location Overview

South Lake Tahoe is a vibrant mountain community with a population of residents and visitors who love to hike, bike, SUP, swim, kayak, ski, and board. Lake Tahoe's South Shore is in the midst of a revival — old motels are transforming into trendy lodgings, a growing craft brewery scene has emerged, new restaurants are on the rise, and hundreds of luxury condos are set to hit the market. Technology is attracting business owners and workers who are devoted to fostering a unique, active lifestyle revolving around the Sierra Nevada mountains and the largest alpine lake in North America — an unparalleled combination that has people calling South Lake Tahoe the outdoor capital of the world.

For Lease

Office

LEASE TYPE | NNN

TOTAL SPACE | 200 - 10,558 SF

LEASE TERM | 60 months

LEASE RATE | Negotiable



SUITE	TENANT	SIZE (SF)	LEASE TYPE	LEASE RATE	DESCRIPTION
Suite	Available	200 - 10,558 SF	NNN	Negotiable	Floor can be split for multi-tenant or co-tenant work space.
Suite 201	Available	200 - 5,635 SF	NNN	Negotiable	Floor can be split for multi-tenant or co-tenant work space.
Suite 301	Available	200 - 3,423 SF	NNN	Negotiable	Floor can be split for multi-tenant or co-tenant work space.

For Lease

Office

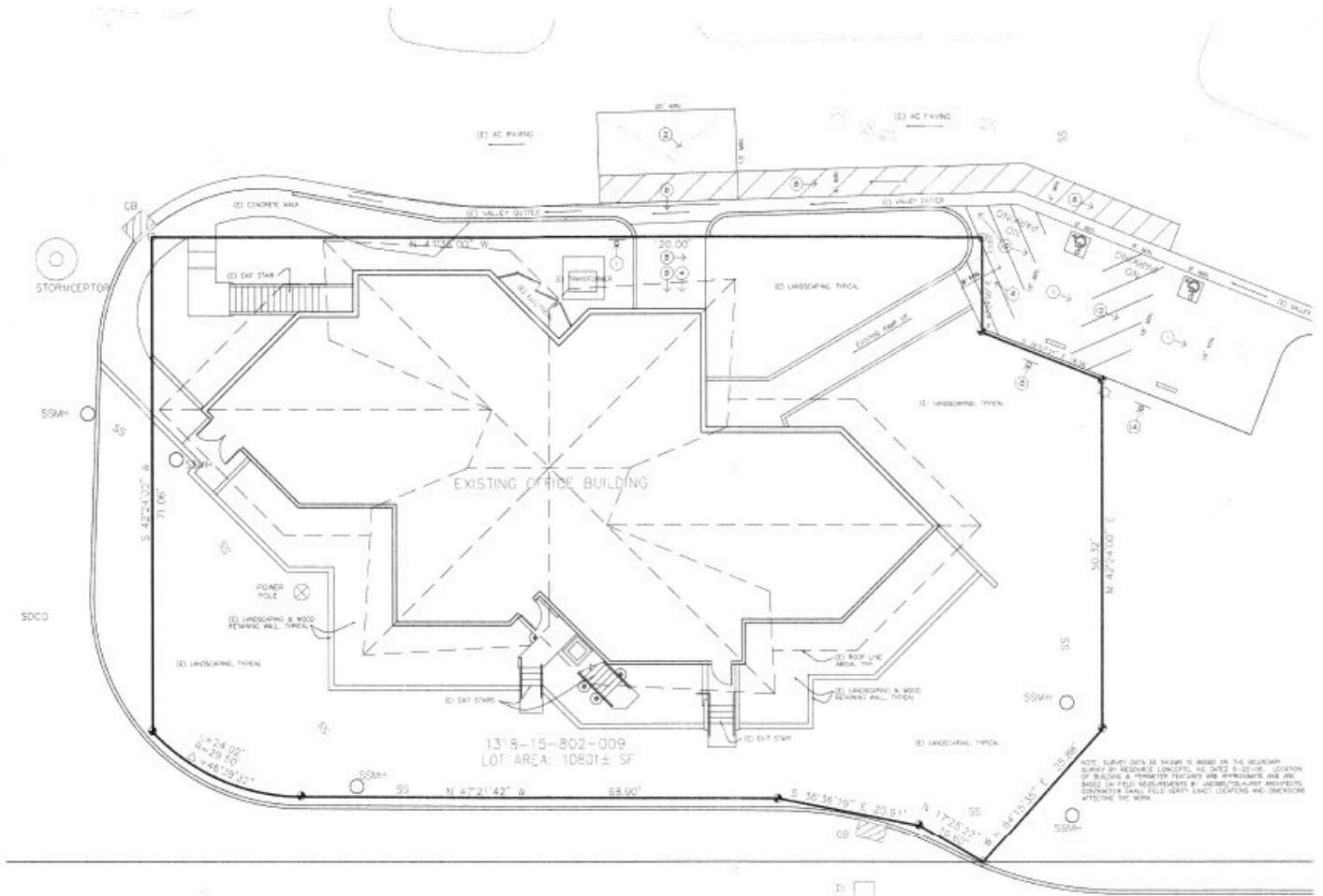


For Lease

Office



Office Space - Site Plan

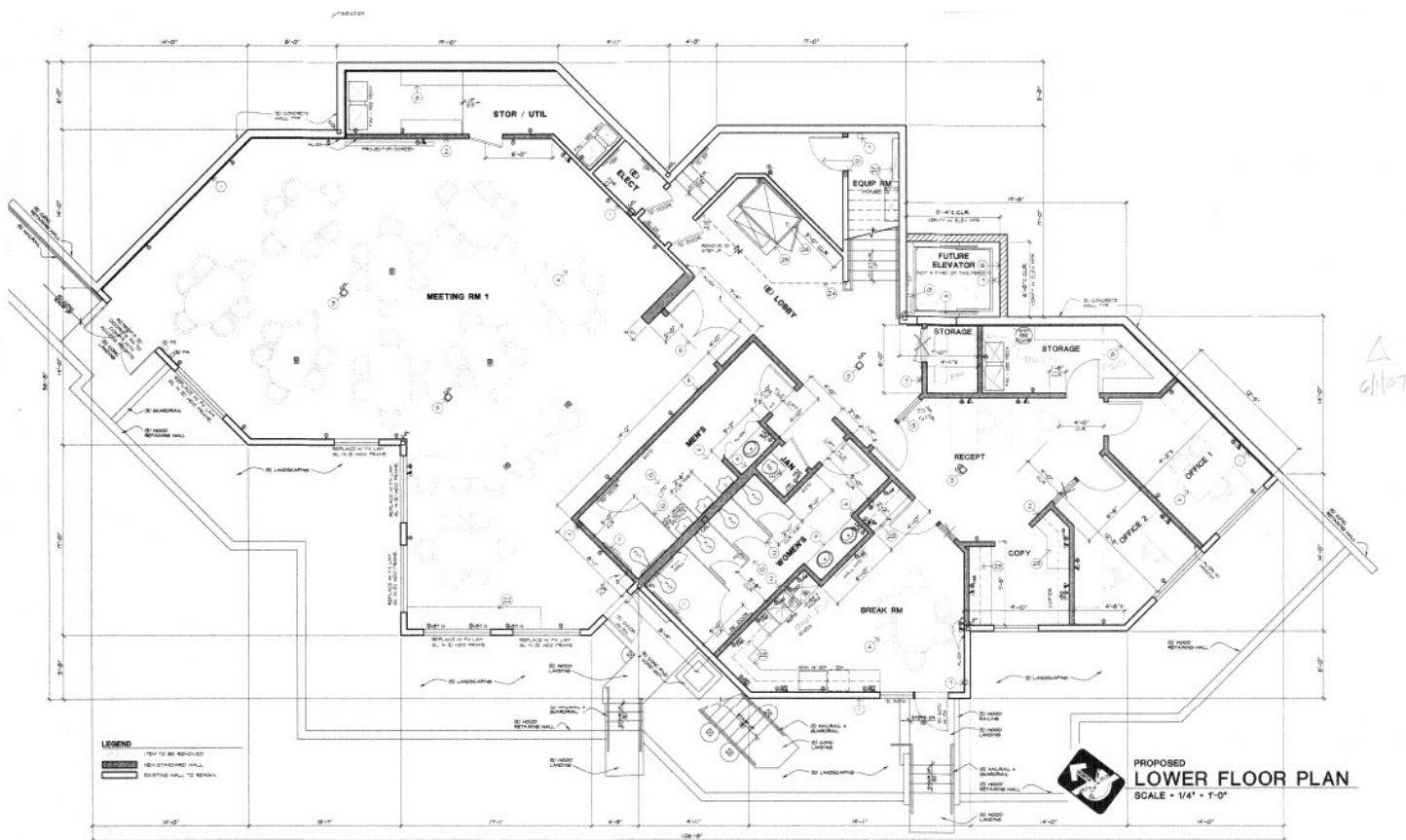


U.S. HIGHWAY 50

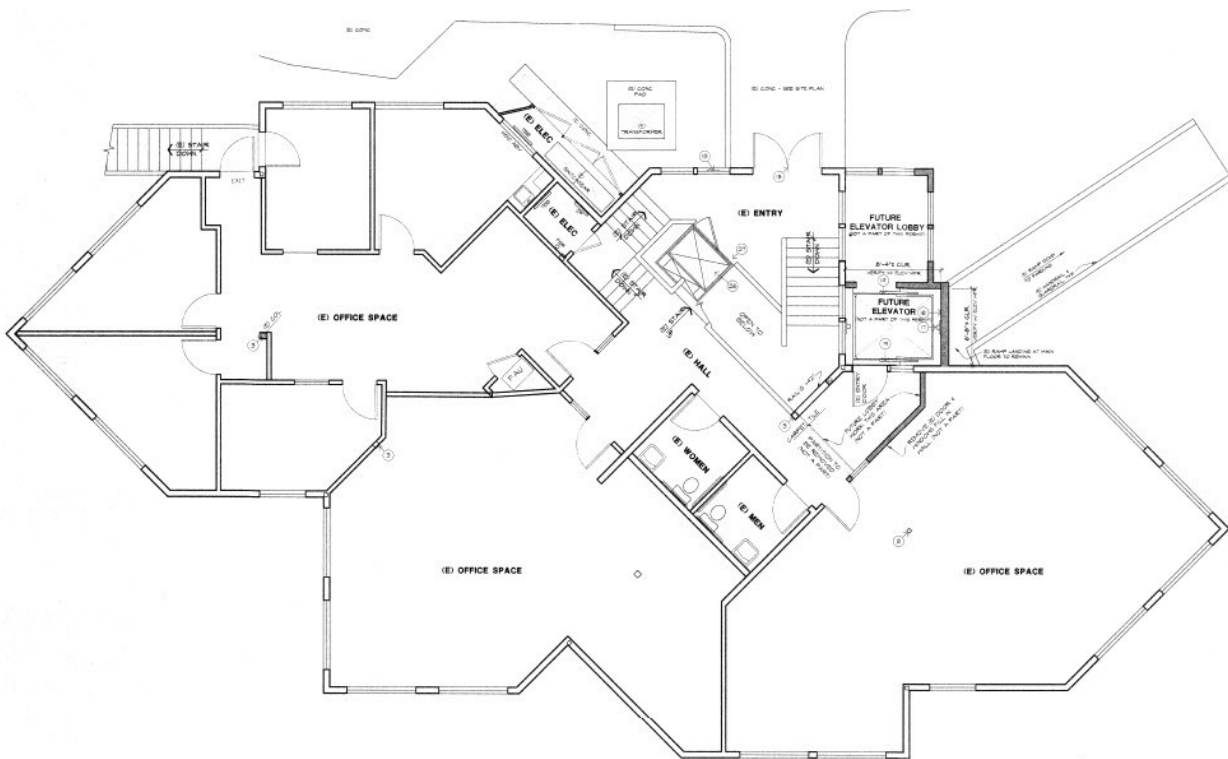


**PROPOSED
SITE PLAN**
SCALE • 1/8" = 1'-0"

Floor Plan - Lower Level

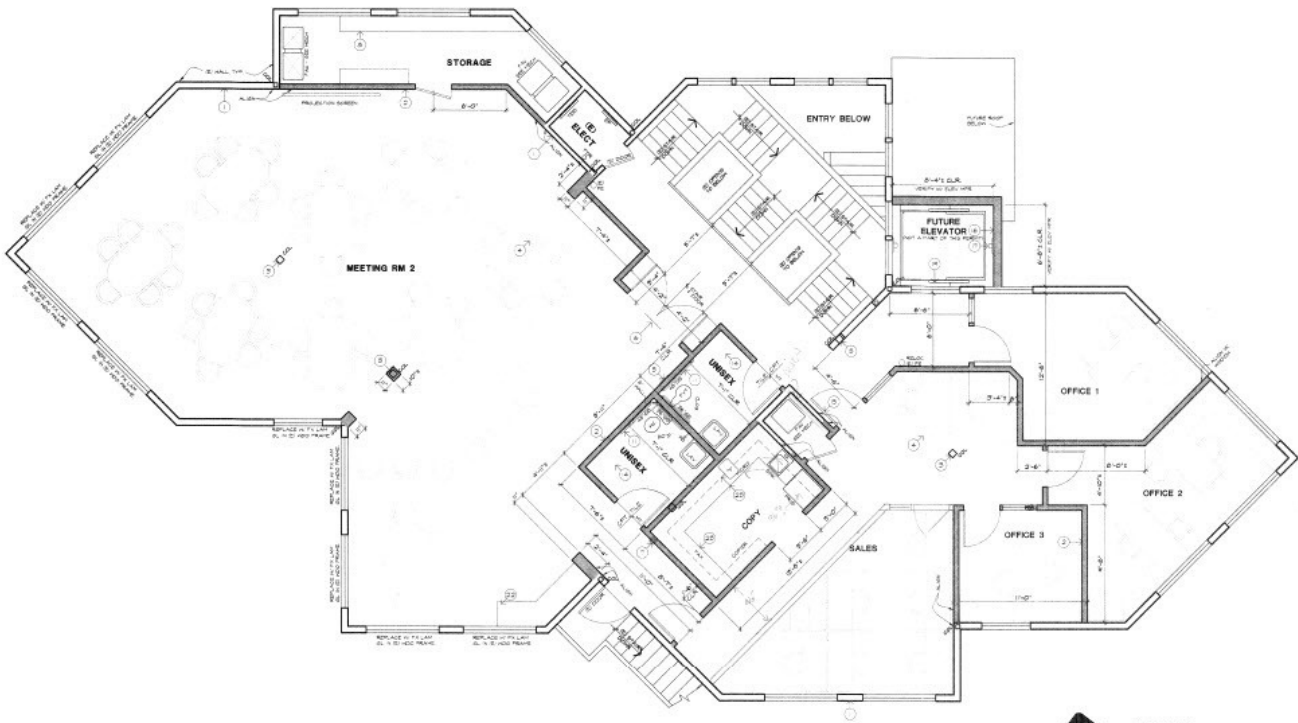


Floor Plan - Main Level



 PROPOSED
MAIN FLOOR PLAN
SCALE - 1/4" = 1'-0"

Floor Plan - Upper Level

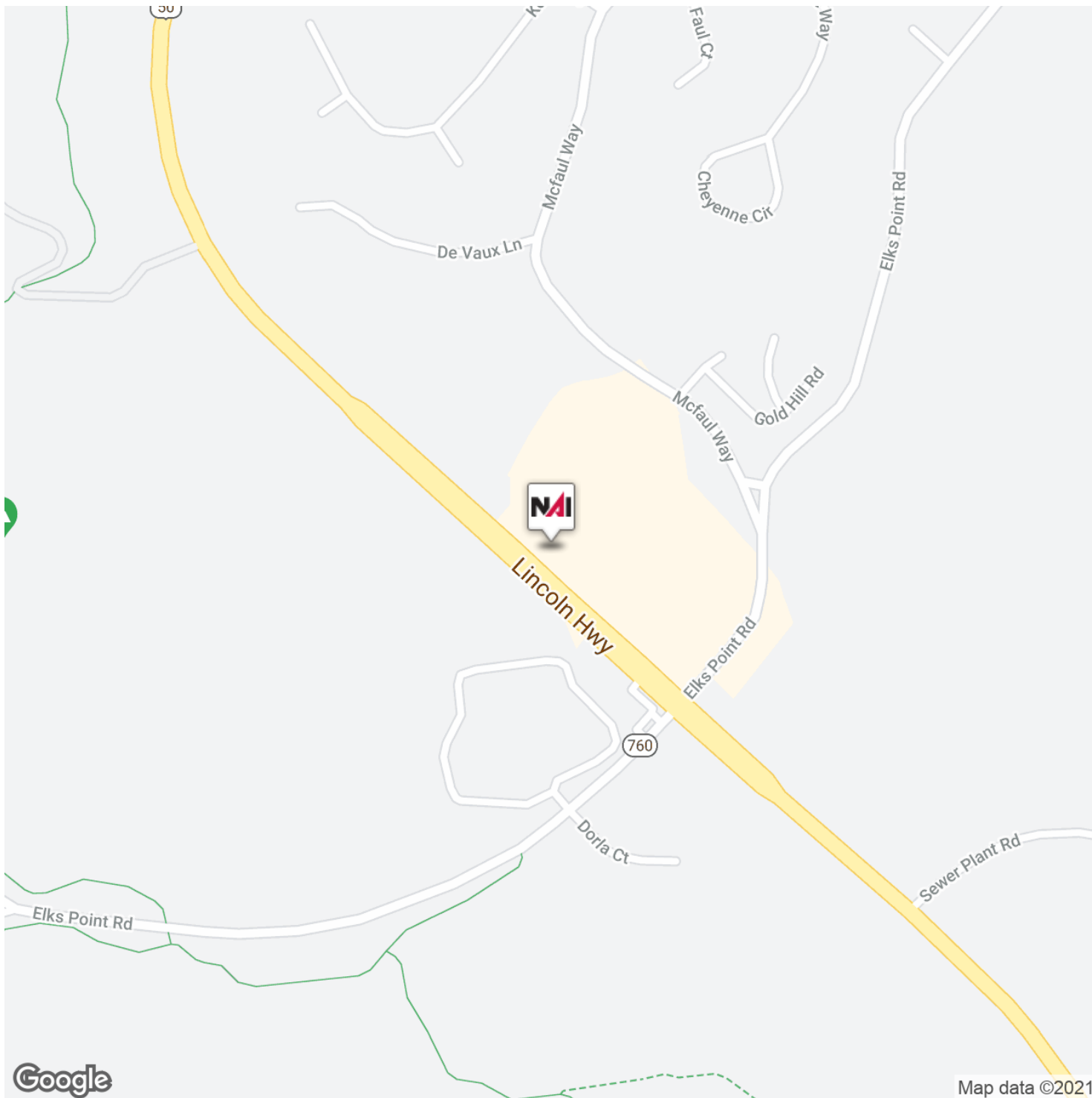


6/1/07

 PROPOSED
UPPER FLOOR PLAN
SCALE - 1/4" = 1'-0"

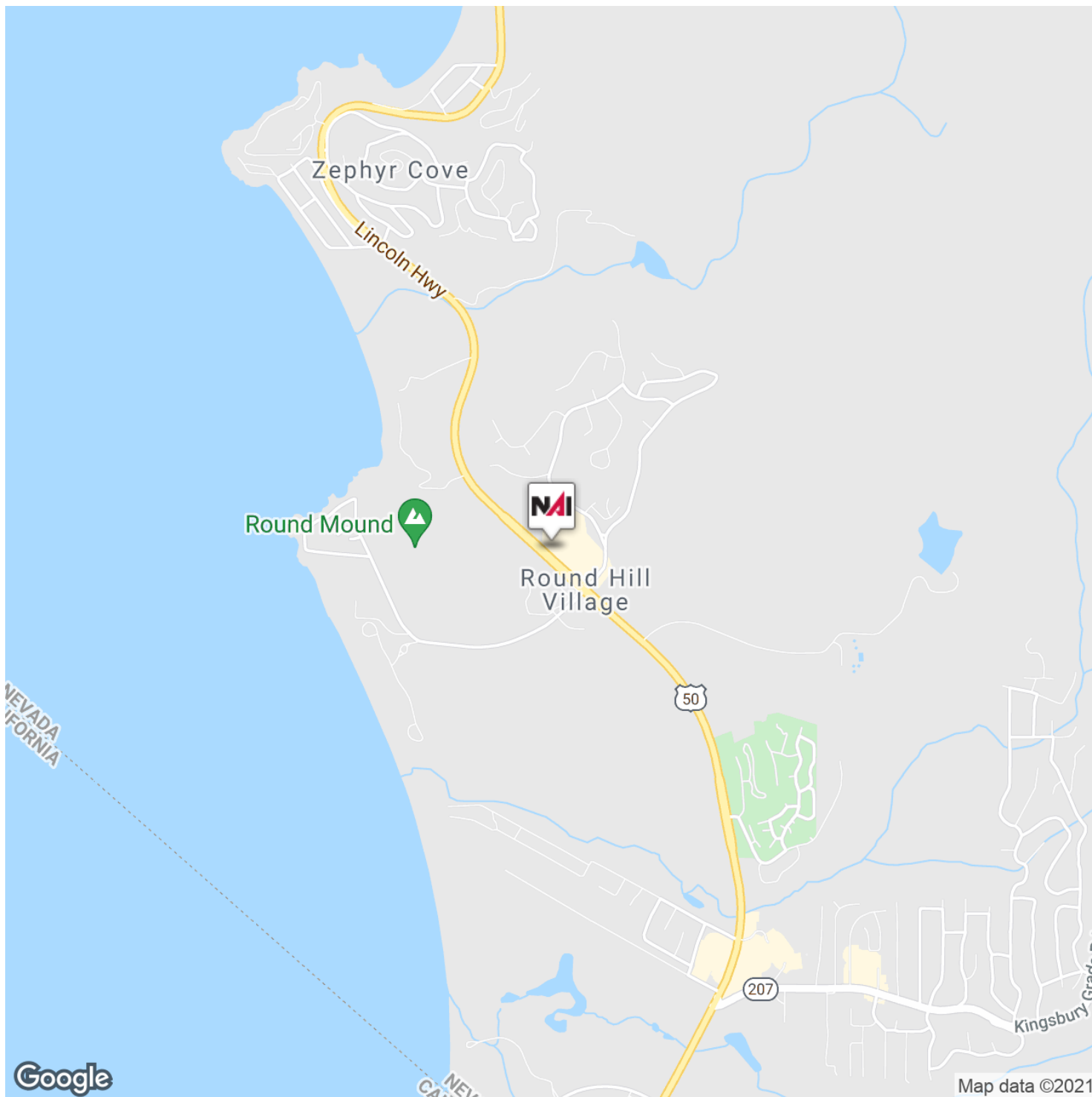
For Lease - -195 Hwy. 50, Zephyr Cove, NV

Office Space



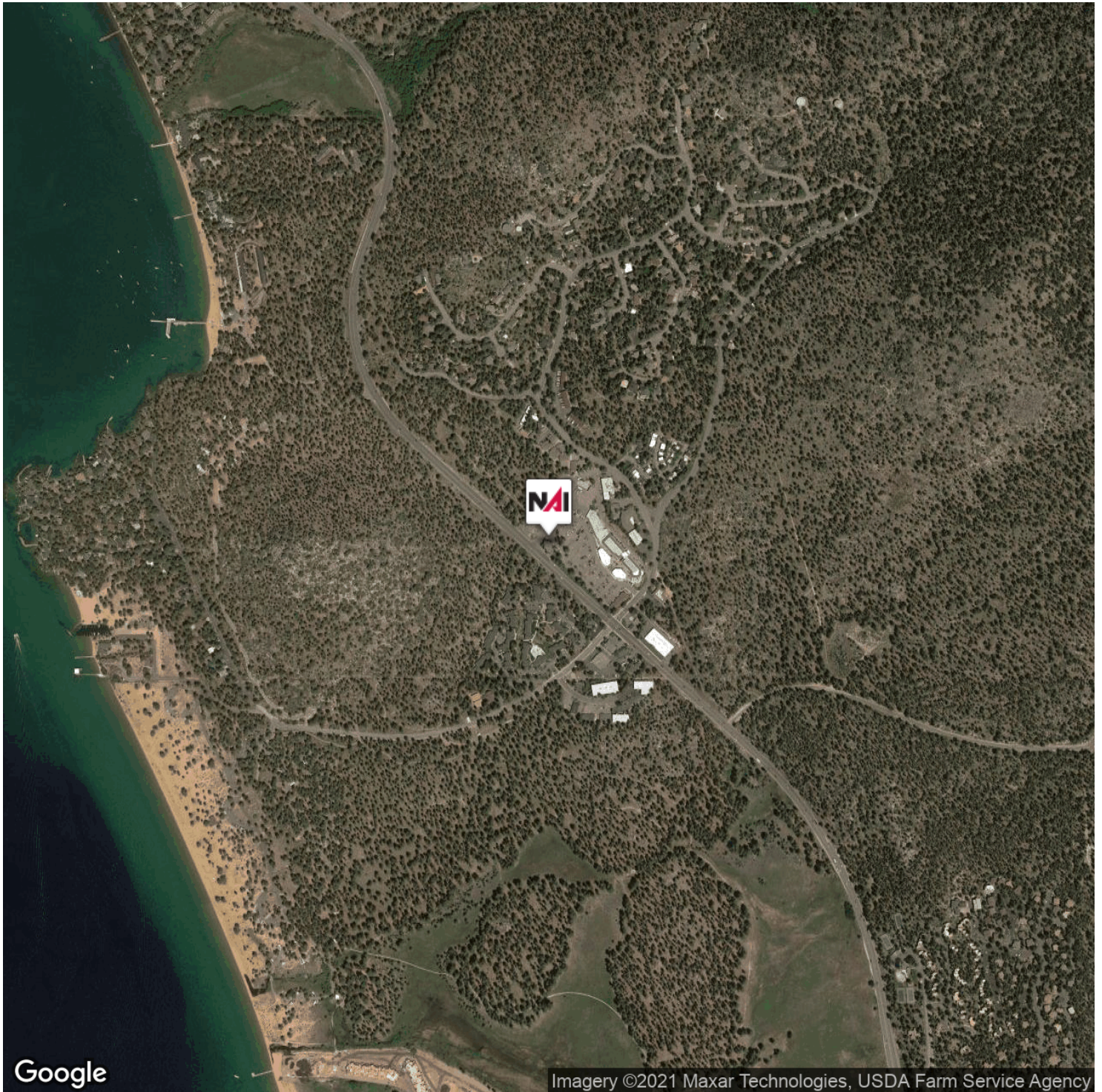
For Lease - -195 Hwy. 50, Zephyr Cove, NV

Office Space - General Location

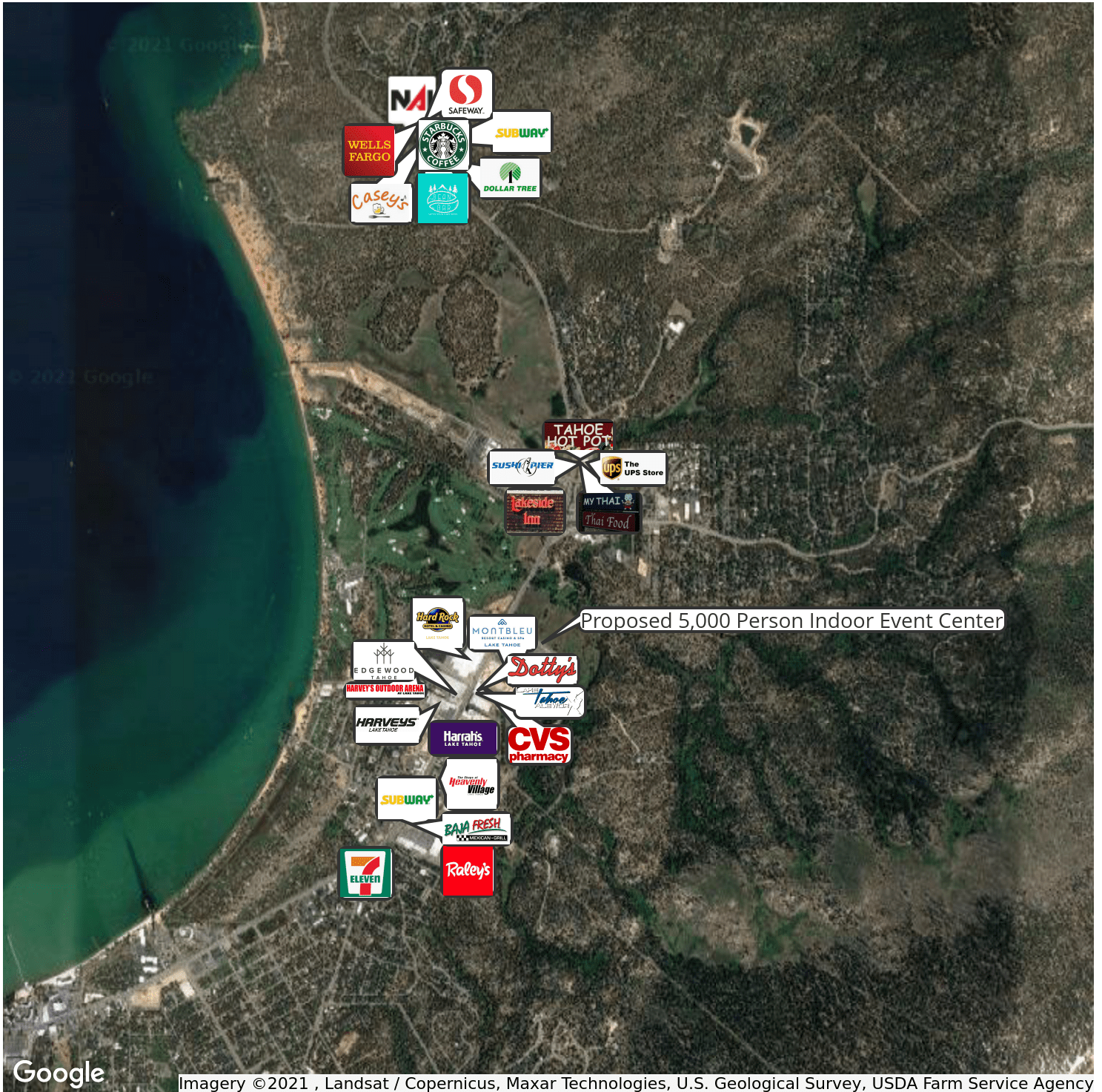


For Lease - -195 Hwy. 50, Zephyr Cove, NV

Office Space - Aerial

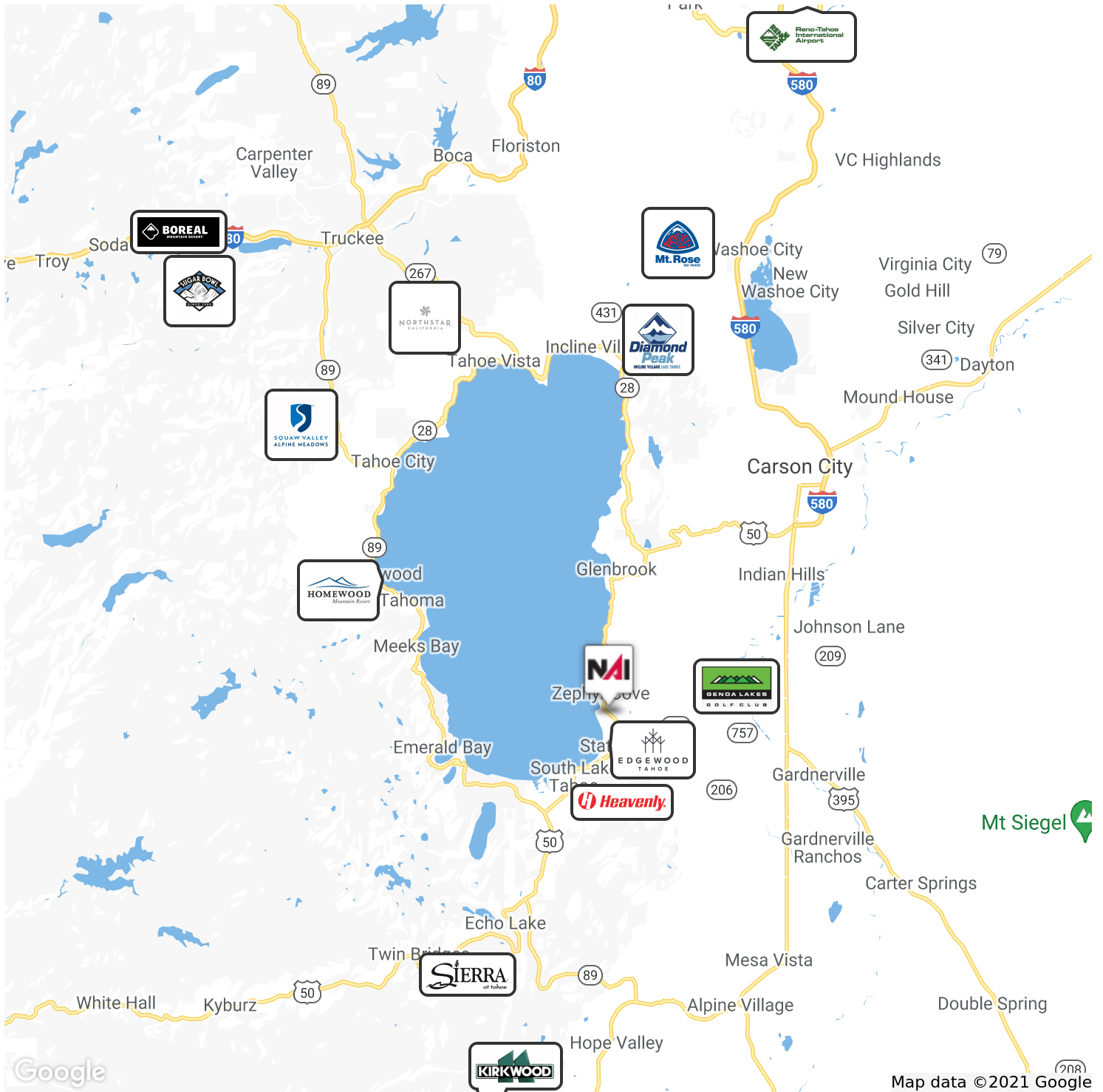


Retailer Map



For Lease - -195 Hwy. 50, Zephyr Cove, NV

Ski Resorts/Golf Courses



Demographics

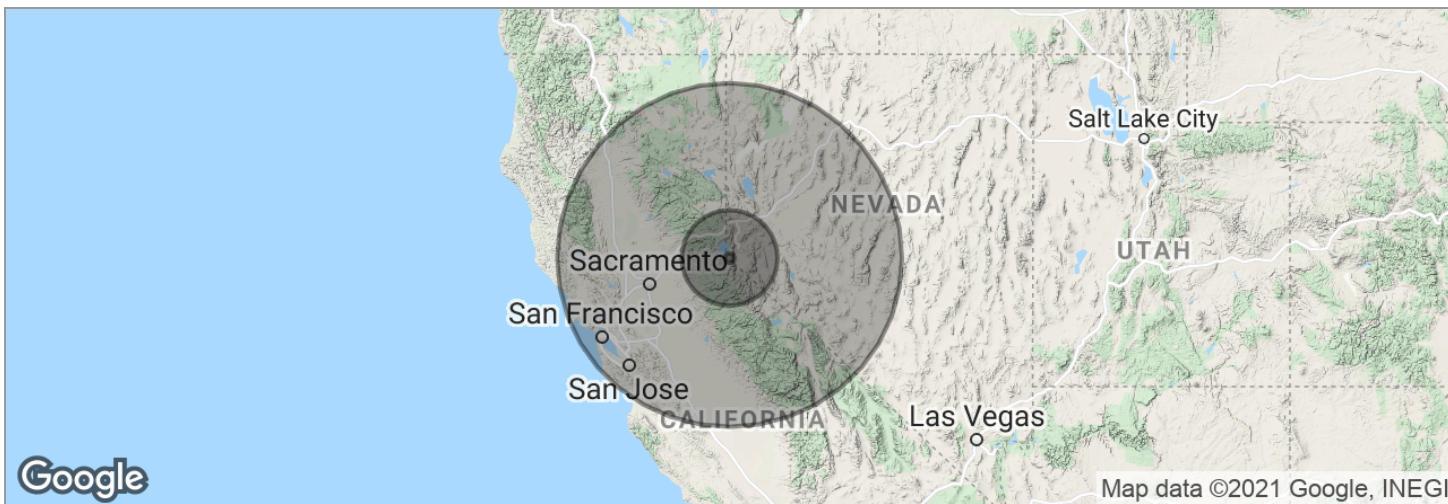
Map

Northern California

Northern California's largest metropolitan area is the San Francisco Bay Area which includes the cities of San Francisco, San Jose, Oakland, and their many suburbs. In recent years the Bay Area has drawn more commuters from as far as Central Valley cities such as Sacramento, Stockton, Fresno, Turlock and Modesto. With expanding development in all these areas, the San Francisco Bay Area, Monterey Bay Area, and central part of the Central Valley and Sierra Nevada foothills may now be viewed as part of a single megalopolis. The 2010 U.S. Census showed that the Bay Area grew at a faster rate than the Greater Los Angeles Area while Greater Sacramento had the largest growth rate of any metropolitan area in California.

Northern Nevada

Business in Reno is booming with the recent announcement of Tesla's Massive GigaFactory Battery Plant. Attention is now on Reno with this announcement. Tesla could create as many as 22,000 jobs in the Reno/Tahoe area at its \$5 Billion factory to produce lithium batteries for electric cars. Tesla will join other big names such as Wal-Mart, Amazon and Federal Express in the Reno area. Reno's success will have substantial economic spill over into Tahoe.



Population	5 Miles	50 Miles	180 Miles
TOTAL POPULATION	22,154	819,061	13,007,014
MEDIAN AGE	35.8	38.3	36.1
MEDIAN AGE (MALE)	35.6	37.5	35.0
MEDIAN AGE (FEMALE)	35.3	38.8	37.4
Households & Income	5 Miles	50 Miles	180 Miles
TOTAL HOUSEHOLDS	8,681	323,103	4,518,901
# OF PERSONS PER HH	2.6	2.5	2.9
AVERAGE HH INCOME	\$75,523	\$72,970	\$80,168
AVERAGE HOUSE VALUE	\$567,070	\$387,135	\$457,245

* Demographic data derived from 2010 US Census

Lake Tahoe's South Shore

Lake Tahoe's South Shore is increasingly becoming known for its status as a world-class, all-season recreation destination.

Heavenly Mountain Resort is located within the city limits, while Kirkwood Mountain Resort and Sierra-at-Tahoe are a short drive from the South Shore. For those who prefer to earn their turns, there are endless opportunities of pristine wilderness for backcountry skiing and boarding.

This year, South Lake Tahoe was named the best spot to après ski in Lake Tahoe and one of the “most livable” mountain towns by Outside Magazine. Local groups like the Tahoe Area Mountain Biking Association are championing trail building on the South Shore to add to an already established system of trails offering unparalleled views of Big Blue. This includes the famous 165-mile-long Tahoe Rim Trail, which attracts hikers and bikers from around the world — just one of the reasons Singletracks named South Lake Tahoe among its top 10 mountain biking destinations in the U.S. this year.

Similarly, the South Shore is recognized for its ever-growing selection of outdoor climbing routes, which offer something for all skill levels. Plans for a state-of-the-art recreation center operated by the city are currently being drawn up, while the South Shore's first climbing gym, Blue Granite Climbing Gym, is expected to open in 2018.

With numerous public beaches, on-water activities like boating, SUPing, and kayaking remain a major attractant to visitors. Unlike other parts of Lake Tahoe, the South Shore features long stretches of undeveloped shoreline such as Nevada Beach and Kiva Beach (and let's not forget the most photographed spot in all of Lake Tahoe — Emerald Bay).

Fishing enthusiasts can opt to spend the day out on the lake trolling for mackinaw, hike to one of the hundreds of alpine lakes for some off-grid angling, or fly fish in Lake Tahoe's tributary rivers.

Edgewood Tahoe — home of the annual American Century Celebrity Golf Championship — now has a new resort, spa and bistro on property to complement its highly sought-after 18-hole course.

Though Lake Tahoe's South Shore may have once been known for its casinos, today they only serve as an amenity for the outdoor capital of the world.

Economy:

Tourism is the driving force behind South Lake Tahoe's economy. Fifty percent of the jobs in the Tahoe Basin are tied to tourism. According to recent studies, 24 million visitors come to Lake Tahoe annually, resulting in an economic impact of \$817M in the summer and \$343M in the winter for the South Shore.

Lake Tahoe's South Shore

Dining & Drinks:

The gastronomy scene on the South Shore is diverse — from sushi bars and gourmet burgers spots, to BBQ joints and classic steakhouses. The last five years have seen an elevation in dining, as hip new restaurants have replaced tourist traps. The Oyster Bar in Hard Rock Hotel and Casino Lake Tahoe is serving up a wide selection of seafood, Verde Mexican Rotisseries has raised the bar with health-conscious and locally sourced ingredients, and classic restaurants like the cozy cabin-turned-Café Fiore continue to offer sophisticated dining opportunities (and an extensive wine selection).

Additionally, the South Shore is now a destination for the craft beer lover; it is home to three breweries, with an additional three slated to open in the next year.

El Dorado County Wine Country, located an hour and a half from the South Shore, is becoming recognized for its 60 boutique wineries. More restaurants are looking to capture a taste of the Sierra Foothills by partnering with these vineyards, including in events like the annual farm-to-fork festival Sample the Sierra hosted in South Lake Tahoe.

Technology:

As the population (and housing costs) rise in the Bay Area, the South Shore is becoming home to more educated business owners, entrepreneurs, freelancers and remote workers who are seeking the Tahoe work/play lifestyle. Coworking spaces like the Tahoe Mountain Lab provide reasonable rates, high-speed Internet and networking opportunities that allow this to be possible. This December the Mountain Lab opened a second location in South Lake Tahoe, a ski-in, ski-out coworking space atop Heavenly Mountain Resort.

Development:

Development is booming on the South Shore. Formerly blighted motels are being remodeled with an eye for modern design. The Coachman Hotel, for example, reopened this year with a ski-chic design that has earned it recognition from the likes of Vogue and Sunset magazines. Boutique hotel chain Joie de Vivre recently acquired and renovated two lodging properties into the Hotel Becket. The hotel's new Southern-inspired restaurant is now on the map for its smoked meats and selection of 60 whiskeys.

Other large infrastructure projects are underway across the South Shore, including the construction of luxury condos at Zalanta Resort at the Village and the Tahoe Beach Club. A new outdoor shopping hub, The Crossing at the Y, is open after extensive renovations. It's home to an array of locally-owned stores, including a barre-pole-hot yoga studio and a brand new brewery.

For Lease

All Photos Shot In South Lake Tahoe

