

For Sale
Industrial Waterfront
 Lots 1, 5, 6, and 9 available



Bayou Black

Highway 182
 Gibson, Louisiana 70356

Property Highlights

- ± 22' of Water Depth
- ± 7,500' of Water Frontage
- Tracts Available Separately
- All sites are filled and heavily compacted with gravel and shell roadways and work areas except for Lot 9
- Lots 5 and 6 may be sold in smaller sections; divisions shown
- 30 Miles of Unobstructed Access to Gulf
- 3 Miles to the Intracoastal Waterway
- Near Burlington Northern Rail Line
- Various Economic Incentives Offered by Terrebonne Parish and the State of Louisiana

For more information
James Barse, CCIM, SIOR
 O: 504 340 9339 | C: 504 439 9376
 jbarse@latterblum.com

Eli Gunesebakan
 O: 504 569 9486 | C: 504 401 4900
 elig@latterblum.com

Maxwell Grosch
 O: 504 525 1311 | C: 504 813 1671
 mgrosch@latterblum.com



NO WARRANTY OR REPRESENTATION, EXPRESS OR IMPLIED, IS MADE AS TO THE ACCURACY OF THE INFORMATION CONTAINED HEREIN, AND THE SAME IS SUBMITTED SUBJECT TO ERRORS, OMISSIONS, CHANGE OF PRICE, RENTAL OR OTHER CONDITIONS, PRIOR SALE, LEASE OR FINANCING, OR WITHDRAWAL WITHOUT NOTICE, AND OF ANY SPECIAL LISTING CONDITIONS IMPOSED BY OUR PRINCIPALS NO WARRANTIES OR REPRESENTATIONS ARE MADE AS TO THE CONDITION OF THE PROPERTY OR ANY HAZARDS CONTAINED THEREIN ARE ANY TO BE IMPLIED. LICENSED IN LOUISIANA.

430 Notre Dame Street
 New Orleans, LA 70130
 504 525 1311 tel
 latterblum.com
 February 26, 2021



Property Overview

This industrial waterfront development offers a substantial amount of well-filled land and frontage on Bayou Black. This waterway, maintained at a 22-foot depth, offers unrestricted access (no bridges, locks, or overhead powerlines) to the Gulf of Mexico. The site has about 30 miles of marsh and wetlands to the south, which helps shelter the land from flooding due to rising water from tropical storms and hurricanes. The property is situated between Houma and Morgan City and is immediately accessible from its own exit, #185, off of Hwy. 90 (future I-49).

The sites are filled and each lot, except for Lot 9, are heavily compacted with gravel, shell roadways, and work areas. Two choices are available for heavy electrical power suppliers, and water is brought to each site. There is rail nearby. Training and other economic assistance programs could be available with these sites. Lots 5 and 6 may be sold in smaller sections; division lines shown below.





6791 Bayou Black Drive, Lot 1

Gibson, LA 70356

Sale Price
\$4,750,000

Property Features

- ±66.5 Acres
- 40 Acres Cleared
- 880' of Water Frontage
- 395' Wide Slip with Heavy-Duty Steel Bulkhead
- 22' Water Depth, Unrestricted Access to The Gulf of Mexico
- Two Buildings in Fair to Poor Condition
- Site is Well-Filled and Offers a Substantial Amount of Shell/Gravel Stabilization in Work Areas and on Roadways



6833-55 Bayou Black Drive, Tract 5A

Gibson, LA 70356

Sale Price for Lot 5
\$7,500,000

Property Features

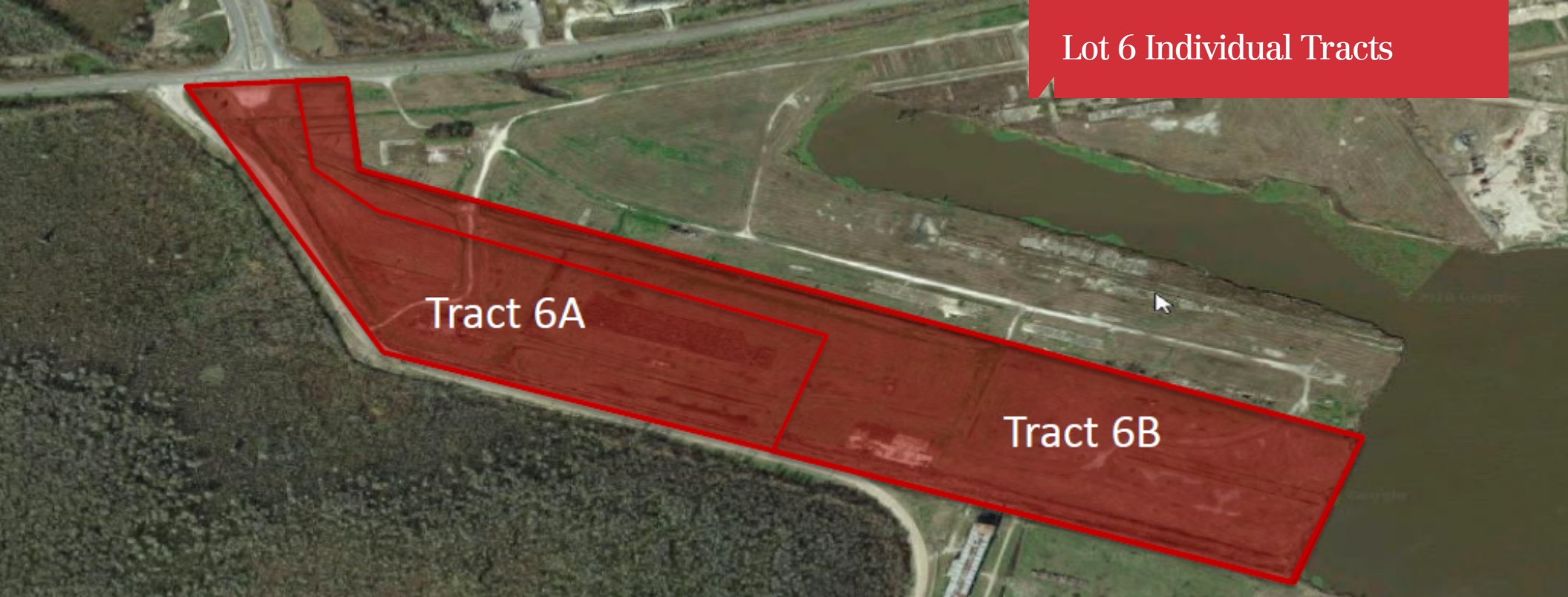
- ±81 Usable Acres, Including Slip
- ±2,400' of Frontage on Highway 182
- Over 4,000' of Water Frontage
- Slip is approx. 1,900' x 330'
- 22' Water Depth
- Unrestricted Access to The Gulf of Mexico
- Site is Well-Filled and Offers a Substantial Amount of Shell/Gravel Stabilization in Work Areas and on Roadways

Lot 5 Individual Tracts



Tract	Acreage	Price
Tract 5A	90.4	\$6,000,000
Tract 5B	6.9	\$450,000
Tract 5C	2.6	\$285,000
Tract 5D	6.5	\$625,000
Tract 5E	6.8	\$625,000

Lot 6 Individual Tracts



209-317 Powhattan Court, Lot 6

Gibson, LA 70356

Sale Price for Lot 6
\$3,100,000

Property Features

- ±46 Acres
- 640' of Water Frontage
- 22' Water Depth
- Tract 6A is 17.7 Acres (\$700,000)
- Tract 6B is 28.3 Acres (\$2,500,000)
- Unrestricted Access to The Gulf of Mexico
- Site is Well-Filled and Offers a Substantial Amount of Shell/Gravel Stabilization in Work Areas and on Roadways



583 Powhattan Court, Lot 9

Gibson, LA 70356

Sale Price
\$3,500,000

Property Features

- ±86.6 Acres
- ±1,600' of Water Frontage
- 22' Water Depth
- Unrestricted Access to The Gulf of Mexico
- Well Filled with Elevations of 6' to 8' Above Sea Level
- Making It Some of The Highest Land in The Area