

For Lease

Office

\$18.50/SF NNN



90 Southside Avenue

Asheville, North Carolina 28801

Property Highlights

- Suite 300
- Class B office space
- Great location for a medical office
- Close to CBD
- Near Mission Hospital

Property Description

Exceptional mid-town office space with 5-6 offices, large bullpen area and large conference room.

OFFERING SUMMARY

Available SF	3,250 SF
Lease Rate	\$5,010.00 per month (NN)
Lot Size	0.07 Acres

DEMOGRAPHICS

Stats	Population	Avg. HH Income
1 Mile	6,590	\$38,730
3 Miles	46,432	\$51,039
5 Miles	93,677	\$55,045

For more information

Robin Boylan, CCIM, SIOR

O: 828 777 0714

rab@naibevely-hanks.com



For Lease

Office Building

\$18.50/SF NNN

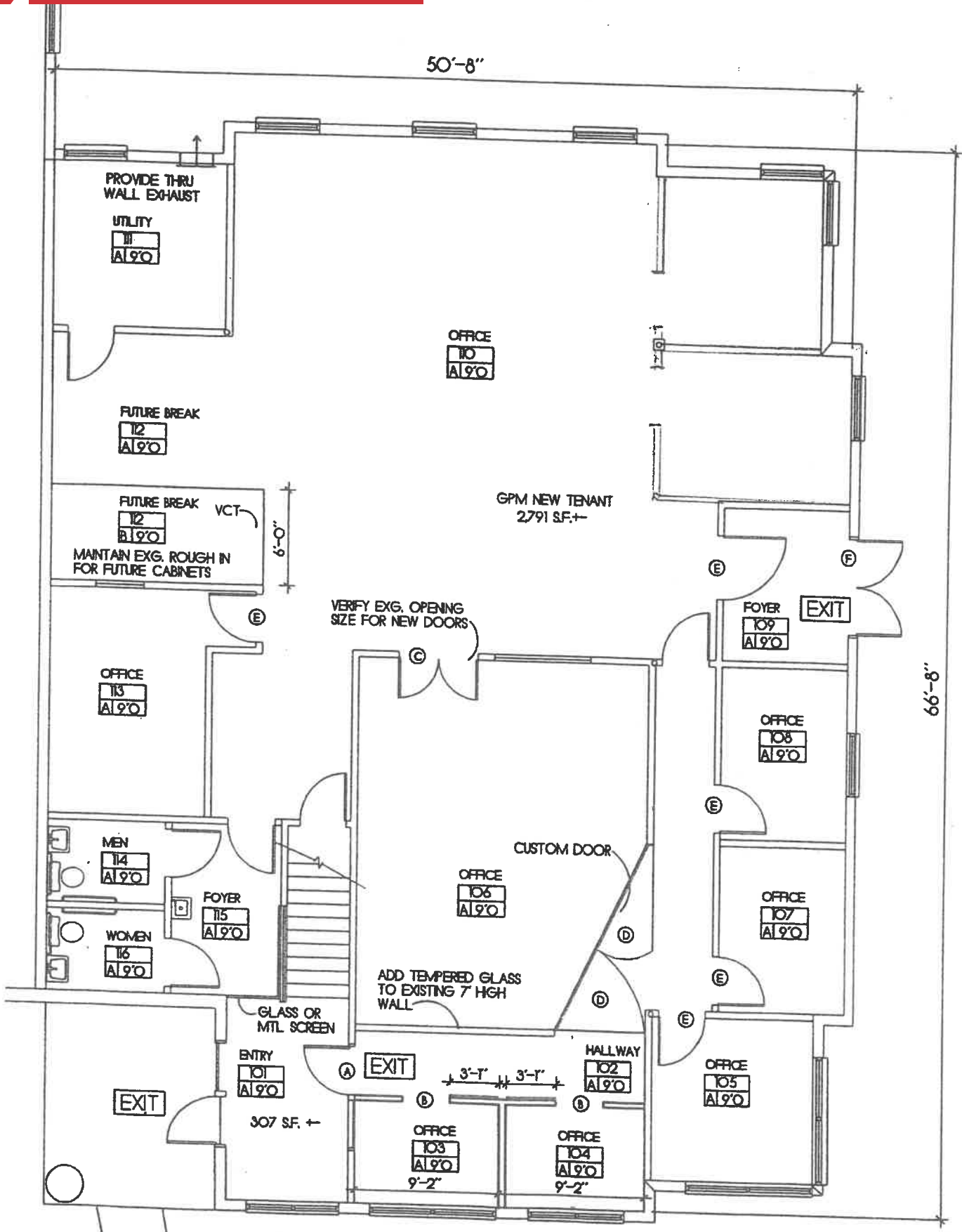
PROPERTY ADDRESS:	90 Southside Avenue Asheville, NC 28801
PROPERTY TYPE:	Office
APN:	9648-37-2224-00000
LOT SIZE:	0.07 Acres
BUILDING CLASS:	B
ZONING:	OB
PARKING SPACES:	11
CROSS STREETS:	Coxe Avenue
YEAR BUILT:	1990
NUMBER OF STORIES:	1
FOUNDATION:	Slab
ROOF:	Fiberglass



For Lease

Office Building

\$18.50/SF NNN



NO.
A
B
C
D
E
F

For Lease

Office Building

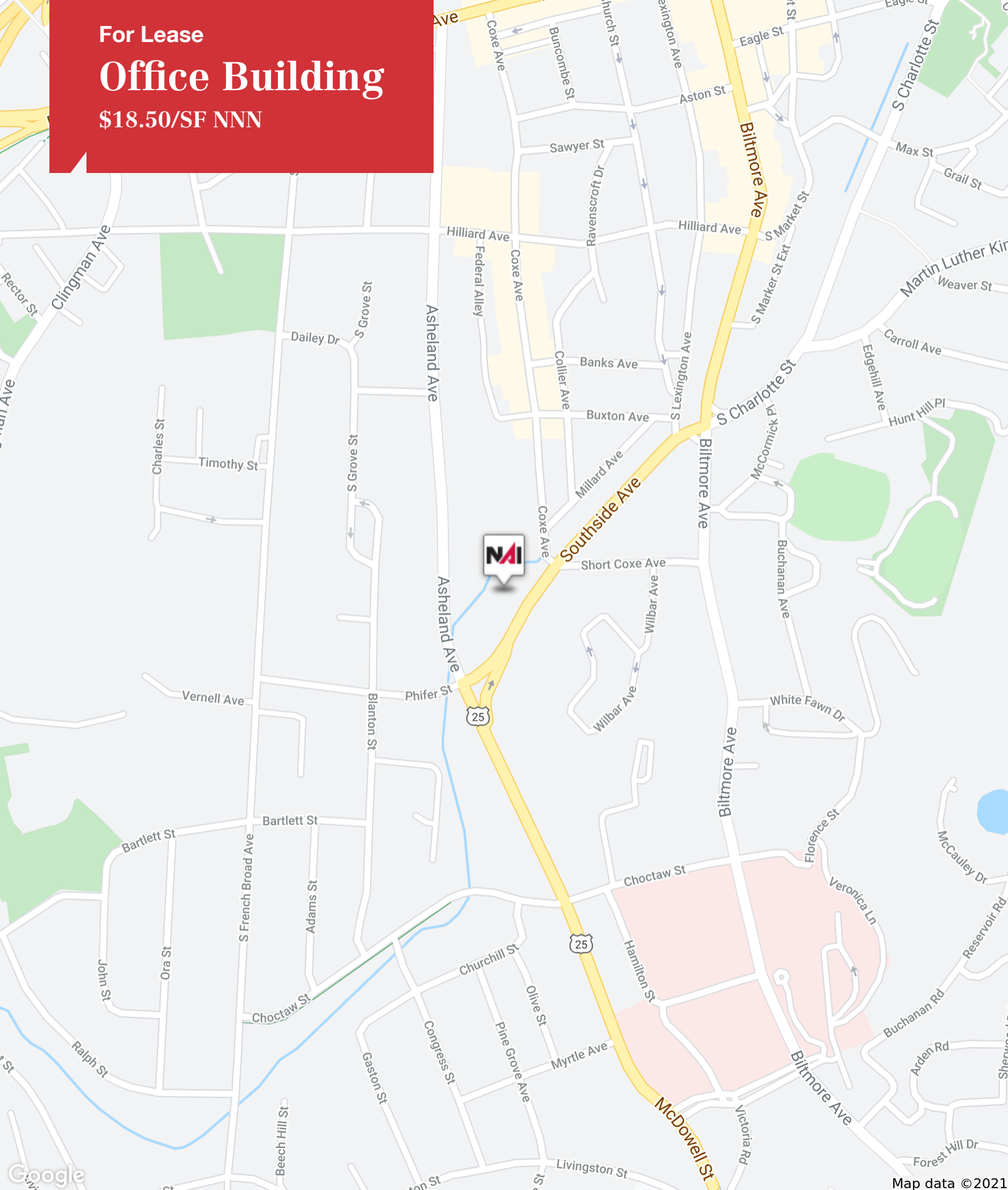
\$18.50/SF NNN



For Lease

Office Building

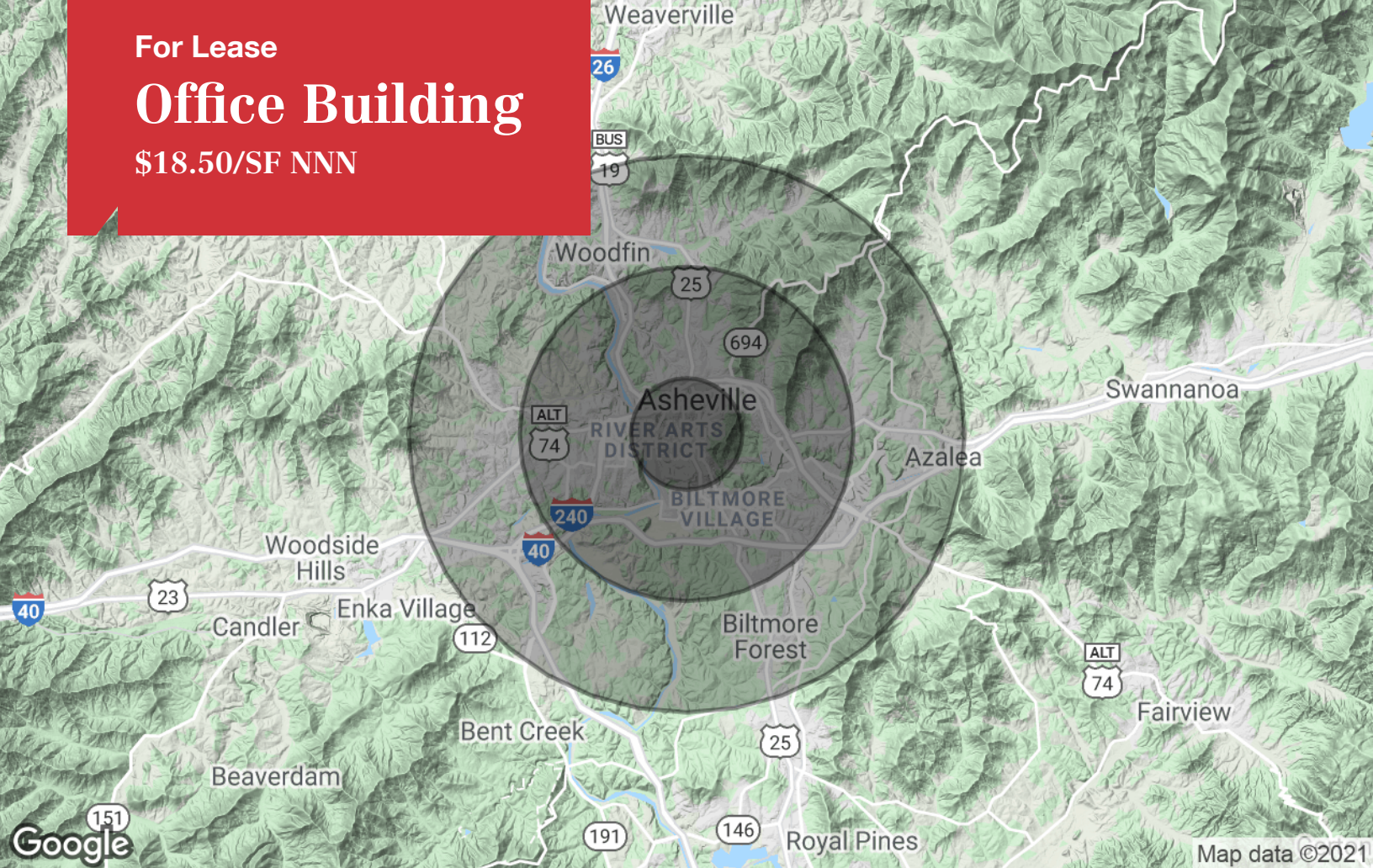
\$18.50/SF NNN



For Lease

Office Building

\$18.50/SF NNN



	1 Mile	3 Miles	5 Miles
Population			
TOTAL POPULATION	6,590	46,432	93,677
MEDIAN AGE	41.4	37.0	38.3
MEDIAN AGE (MALE)	40.9	35.9	36.8
MEDIAN AGE (FEMALE)	41.4	38.0	39.7
Households & Income			
TOTAL HOUSEHOLDS	3,161	20,950	41,666
# OF PERSONS PER HH	2.1	2.2	2.2
AVERAGE HH INCOME	\$38,730	\$51,039	\$55,045
AVERAGE HOUSE VALUE	\$204,224	\$279,204	\$269,206
Race			
% WHITE	59.0%	78.4%	83.1%
% BLACK	40.1%	19.8%	14.3%
% ASIAN	0.0%	0.7%	0.9%
% HAWAIIAN	0.0%	0.0%	0.0%
% INDIAN	0.2%	0.5%	0.6%
% OTHER	0.6%	0.6%	1.0%
Ethnicity			
% HISPANIC	3.0%	4.2%	5.4%

* Demographic data derived from 2010 US Census

For Lease

Office Building

\$18.50/SF NNN



Robin Boylan, CCIM, SIOR

Commercial Broker

828.777.0714 tel

828.777.0714 cell

rab@naibevery-hanks.com

Memberships & Affiliations

Certified Commercial Investment Member (CCIM), Society of Industrial & Office REALTORS (SIOR), Commercial Investment Group, NC Association of REALTORS, National Association of REALTORS

Professional Background

I specialize in the sale and lease of Commercial, Industrial and Multi-family properties in the Western North Carolina area. I have been associated with Beverly-Hanks and Associates since 1988.

Education

University of Louisiana at Lafayette